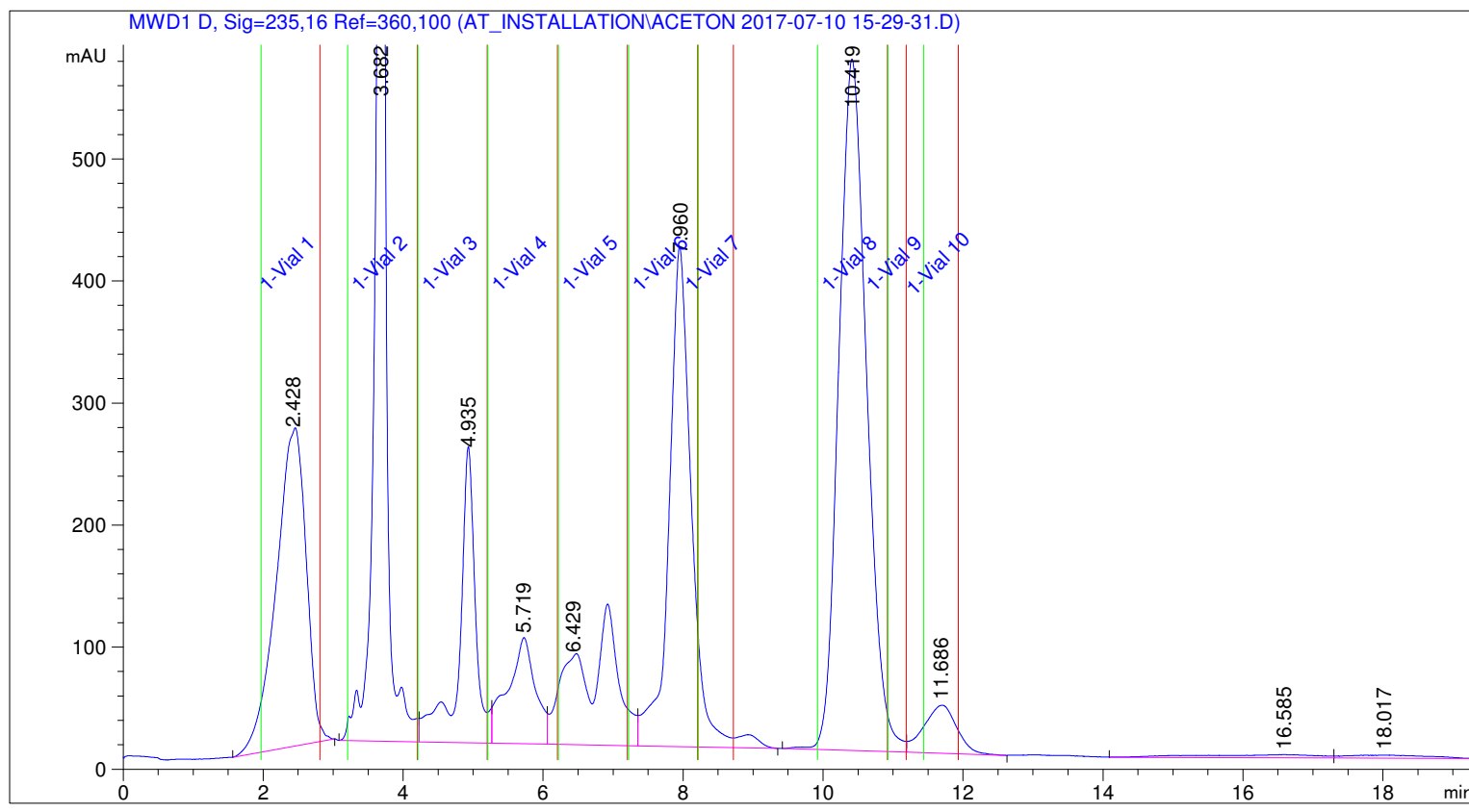


```

=====
Acq. Operator   : SYSTEM
Acq. Instrument : PrepLC                               Location : Vial 1
Injection Date  : 7/10/2017 3:29:31 PM
Method          : C:\CHEM32\1\METHODS\STANDARD_PREP MJ 18HEPE.M
Last changed   : 7/10/2017 3:30:55 PM by SYSTEM
                 (modified after loading)
Method Info    : ACN:Wasser 80:20  Flow 16 ml/min 220 nm
  
```



=====
 Fraction Information
 =====

Fraction collection peak controlled
 Maximum peak duration 1 min.
 Fractions are collected, when at least one peak detector detects a peak
 =====

Frac #	Well #	Location	Volume [µl]	BeginTime [min]	EndTime [min]	Reason	Mass
1	1	1-Vial 1	0.00	1.9690	2.8092	MWD1	
2	1	1-Vial 2	0.00	3.2060	4.2025	MWD1	
3	1	1-Vial 3	0.00	4.2121	5.2025	MWD1	
4	1	1-Vial 4	0.00	5.2098	6.2063	MWD1	
5	1	1-Vial 5	0.00	6.2171	7.2067	MWD1	
6	1	1-Vial 6	0.00	7.2223	8.2065	MWD1	
7	1	1-Vial 7	0.00	8.2156	8.7192	MWD1	
8	1	1-Vial 8	0.00	9.9190	10.9192	MWD1	
9	1	1-Vial 9	0.00	10.9267	11.1892	MWD1	
10	1	1-Vial 10	0.00	11.4394	11.9329	MWD1	

=====

=====
Area Percent Report
=====

Sorted By : Signal
Multiplier : 1.0000
Dilution : 1.0000
Do not use Multiplier & Dilution Factor with ISTDs

Signal 1: MWD1 D, Sig=235,16 Ref=360,100

Peak #	RetTime [min]	Type	Width [min]	Area [mAU*s]	Height [mAU]	Area %
1	2.428	BB	0.4656	7777.76709	256.65356	13.7651
2	3.682	BV	0.1868	1.12608e4	1069.92395	19.9294
3	4.935	VV	0.2724	3912.12036	237.28307	6.9237
4	5.719	VV	0.4039	2393.51489	86.20938	4.2361
5	6.429	VV	0.8035	4331.78174	71.42867	7.6664
6	7.960	VB	0.3670	9289.29395	399.90610	16.4402
7	10.419	BV	0.4377	1.57118e4	562.81226	27.8069
8	11.686	VB	0.5111	1293.72510	39.40258	2.2896
9	16.585	BV	1.5614	316.60080	2.66609	0.5603
10	18.017	VBA	1.0683	216.01697	2.59198	0.3823

Totals : 5.65034e4 2728.87763

=====
*** End of Report ***