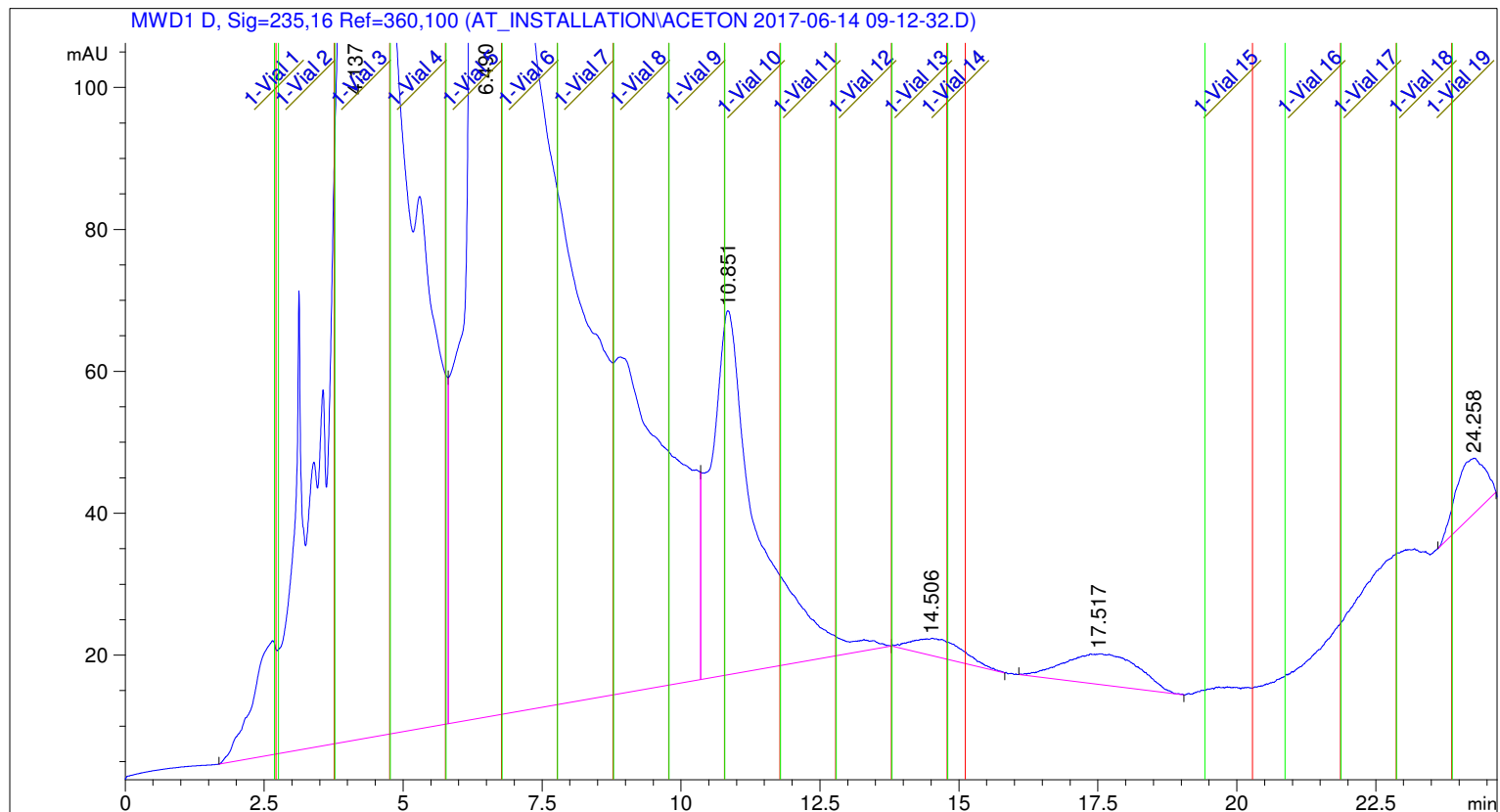


```

=====
Acq. Operator   : SYSTEM
Acq. Instrument : PrepLC                               Location : Vial 1
Injection Date  : 6/14/2017 9:12:15 AM
Acq. Method    : C:\CHEM32\1\METHODS\STANDARD_PREP.M
Last changed   : 5/18/2017 10:59:50 AM by SYSTEM
Analysis Method: C:\CHEM32\1\METHODS\STANDARD_PREP.M
Last changed   : 6/14/2017 9:40:37 AM by SYSTEM
                (modified after loading)
Method Info    : ACN:Wasser 80:20 Flow 16 ml/min 235 nm
  
```



Fraction Information

```

=====
Fraction collection peak controlled
Maximum peak duration 1 min.
Fractions are collected, when at least one peak detector detects a peak
  
```

Frac #	Well #	Location	Volume [µl]	BeginTime [min]	EndTime [min]	Reason	Mass
1	1	1-Vial 1	0.00	2.6833	2.7104	MWD1	
2	1	1-Vial 2	0.00	2.7600	3.7602	MWD1	
3	1	1-Vial 3	0.00	3.7700	4.7602	MWD1	
4	1	1-Vial 4	0.00	4.7677	5.7638	MWD1	
5	1	1-Vial 5	0.00	5.7740	6.7673	MWD1	
6	1	1-Vial 6	0.00	6.7831	7.7704	MWD1	
7	1	1-Vial 7	0.00	7.7796	8.7738	MWD1	
8	1	1-Vial 8	0.00	8.7844	9.7771	MWD1	
9	1	1-Vial 9	0.00	9.7844	10.7804	MWD1	
10	1	1-Vial 10	0.00	10.7894	11.7804	MWD1	
11	1	1-Vial 11	0.00	11.7927	12.7838	MWD1	
12	1	1-Vial 12	0.00	12.7921	13.7871	MWD1	
13	1	1-Vial 13	0.00	13.7965	14.7904	MWD1	
14	1	1-Vial 14	0.00	14.7990	15.1171	MWD1	
15	1	1-Vial 15	0.00	19.4269	20.2840	MWD1	
16	1	1-Vial 16	0.00	20.8669	21.8671	MWD1	

17	1	1-Vial 17	0.00	21.8754	22.8671	MWD1
18	1	1-Vial 18	0.00	22.8758	23.8673	MWD1
19	1	1-Vial 19	0.00	23.8752	24.6883	MWD1

=====
=====
Area Percent Report
=====

Sorted By : Signal
Multiplier : 1.0000
Dilution : 1.0000
Do not use Multiplier & Dilution Factor with ISTDs

Signal 1: MWD1 D, Sig=235,16 Ref=360,100

Peak #	RetTime [min]	Type	Width [min]	Area [mAU*s]	Height [mAU]	Area %
1	4.137	BV	0.4207	3.99018e4	1366.26514	56.6167
2	6.490	VV	0.9292	2.66716e4	396.27780	37.8444
3	10.851	VB	0.8035	3032.61060	51.16449	4.3030
4	14.506	BB	1.1391	164.07085	2.33703	0.2328
5	17.517	BB	1.5815	410.81912	4.28902	0.5829
6	24.258	BBA	0.6364	296.16922	7.77556	0.4202

Totals : 7.04771e4 1828.10903

=====
*** End of Report ***