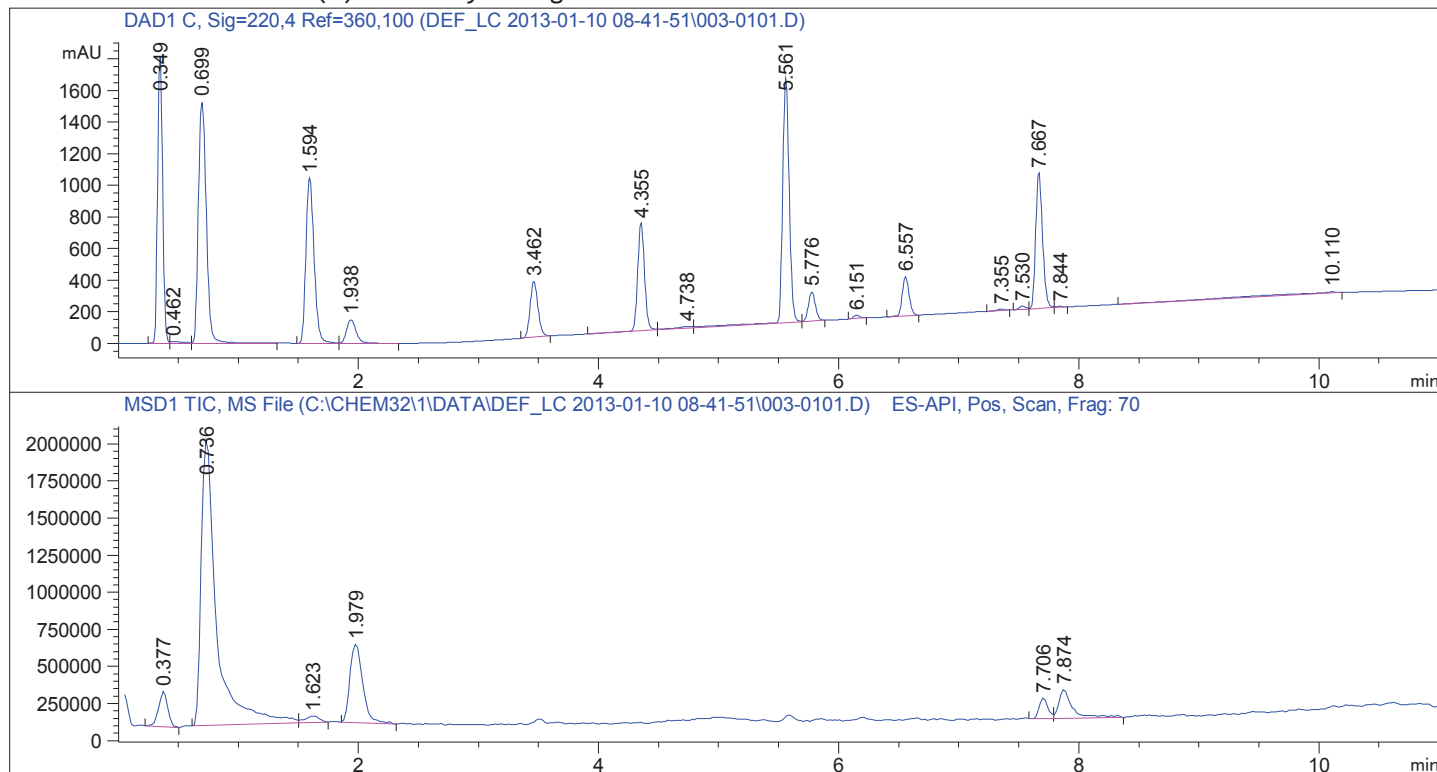


Sample Name: testmix

```

=====
Acq. Operator   : SYSTEM                      Seq. Line :    1
Acq. Instrument : LCMS 1                      Location  : Vial 3
Injection Date  : 1/10/2013 8:43:41 AM       Inj       :    1
                                           Inj Volume: 1.000 µl
Acq. Method     : C:\CHEM32\1\DATA\DEF_LC 2013-01-10 08-41-51\STANDARD_220NM.M
Last changed    : 1/10/2013 8:41:51 AM by SYSTEM
Analysis Method : C:\CHEM32\1\DATA\DEF_LC 2013-01-10 08-41-51\STANDARD_220NM.M (Sequence
Method)
Last changed    : 1/11/2013 10:44:01 AM by SYSTEM
                 (modified after loading)
Method Info     : Standard ACN:Wasser 20:80 -> 95:5 Flow 0.4 ml/min 220nm
  
```

Additional Info : Peak(s) manually integrated



```

=====
                          Area Percent Report
=====
  
```

```

Sorted By      :      Signal
Multiplier     :      1.0000
Dilution      :      1.0000
Do not use Multiplier & Dilution Factor with ISTDs
  
```

Signal 1: DAD1 C, Sig=220,4 Ref=360,100

Peak #	RetTime [min]	Type	Width [min]	Area [mAU*s]	Height [mAU]	Area %
1	0.349	BV	0.0478	5264.00098	1816.30261	15.4105
2	0.462	VV	0.0996	74.18233	10.34943	0.2172
3	0.699	VV	0.0736	7022.34961	1528.19312	20.5581
4	1.594	BV	0.0730	4931.82373	1046.97864	14.4380

