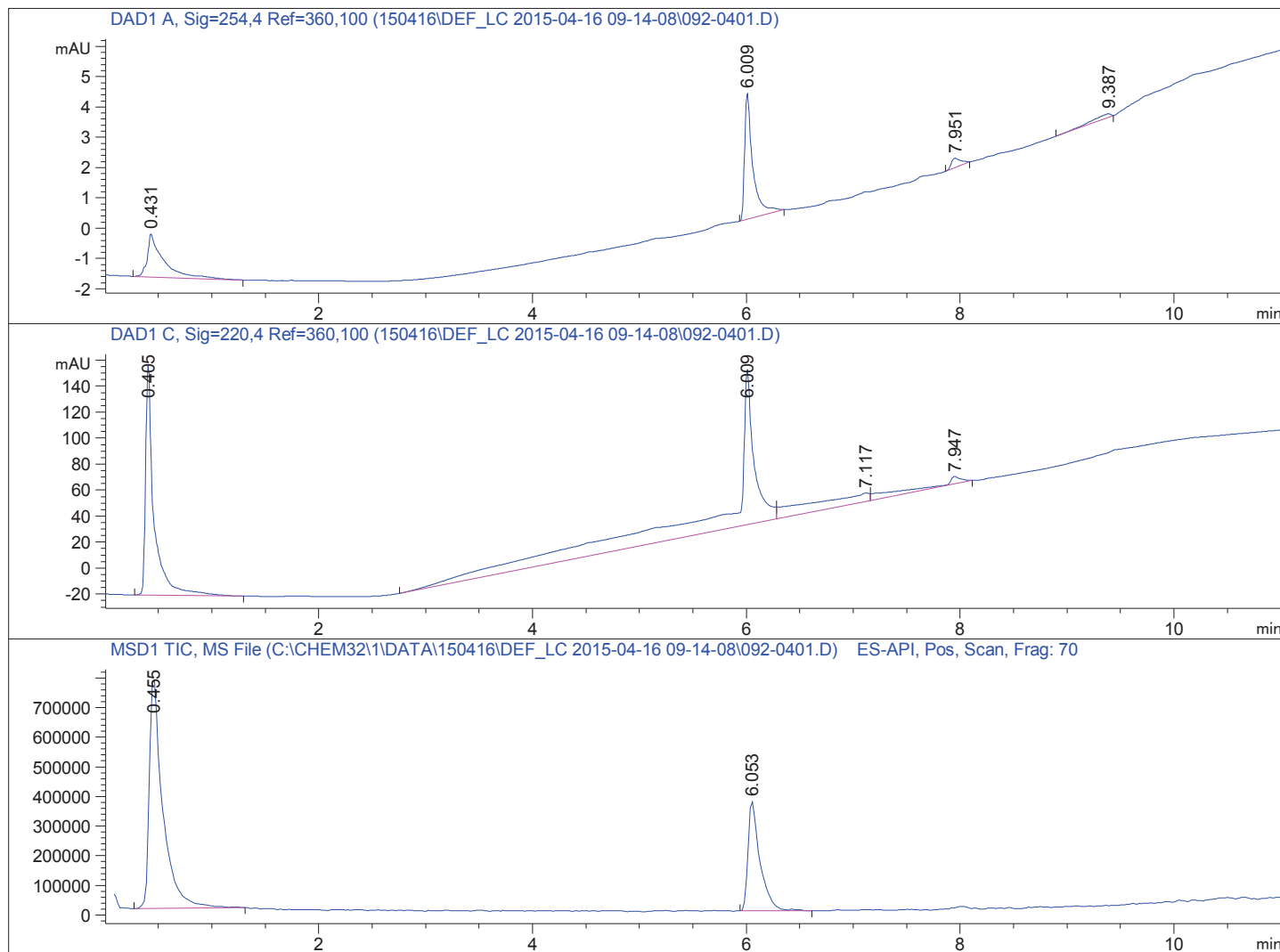


Sample Name: test150416 2

```
=====
Acq. Operator   : SYSTEM                      Seq. Line :    4
Acq. Instrument : LCMS 1                     Location  : Vial 92
Injection Date  : 4/16/2015 10:02:23 AM      Inj       :    1
                                           Inj Volume: 1.000 µl
Acq. Method     : C:\CHEM32\1\DATA\150416\DEF_LC 2015-04-16 09-14-08\STANDARD_220_254.M
Last changed    : 4/16/2015 9:14:08 AM by SYSTEM
Analysis Method : C:\CHEM32\1\DATA\150416\DEF_LC 2015-04-16 09-14-08\STANDARD_220_254.M (
                  Sequence Method)
Last changed    : 4/16/2015 11:27:04 AM by SYSTEM
                  (modified after loading) (Current integration events modified)
Method Info     : Standard ACN:Wasser 20:80 -> 97:3 Flow 0.4 ml/min 220 nm, 254 nm
=====
```



```
=====
                          Area Percent Report
=====
```

```
Sorted By      :      Signal
Multiplier     :      1.0000
Dilution       :      1.0000
Do not use Multiplier & Dilution Factor with ISTDs
```

Signal 1: DAD1 A, Sig=254,4 Ref=360,100

Peak #	RetTime [min]	Type	Width [min]	Area [mAU*s]	Height [mAU]	Area %
1	0.431	BB	0.1345	14.92587	1.42140	36.5516
2	6.009	BB	0.0761	22.15080	4.16342	54.2446
3	7.951	BB	0.0861	1.88023	3.12785e-1	4.6044
4	9.387	BB	0.2023	1.87815	1.18922e-1	4.5994

Totals : 40.83505 6.01652

Signal 2: DAD1 C, Sig=220,4 Ref=360,100

Peak #	RetTime [min]	Type	Width [min]	Area [mAU*s]	Height [mAU]	Area %
1	0.405	BB	0.0760	970.06915	176.69762	25.8948
2	6.009	BV	0.2348	2270.80469	119.99007	60.6164
3	7.117	VV	0.6642	358.11899	6.42595	9.5596
4	7.947	VB	0.3078	147.19402	5.88545	3.9292

Totals : 3746.18684 308.99909

Signal 3: MSD1 TIC, MS File

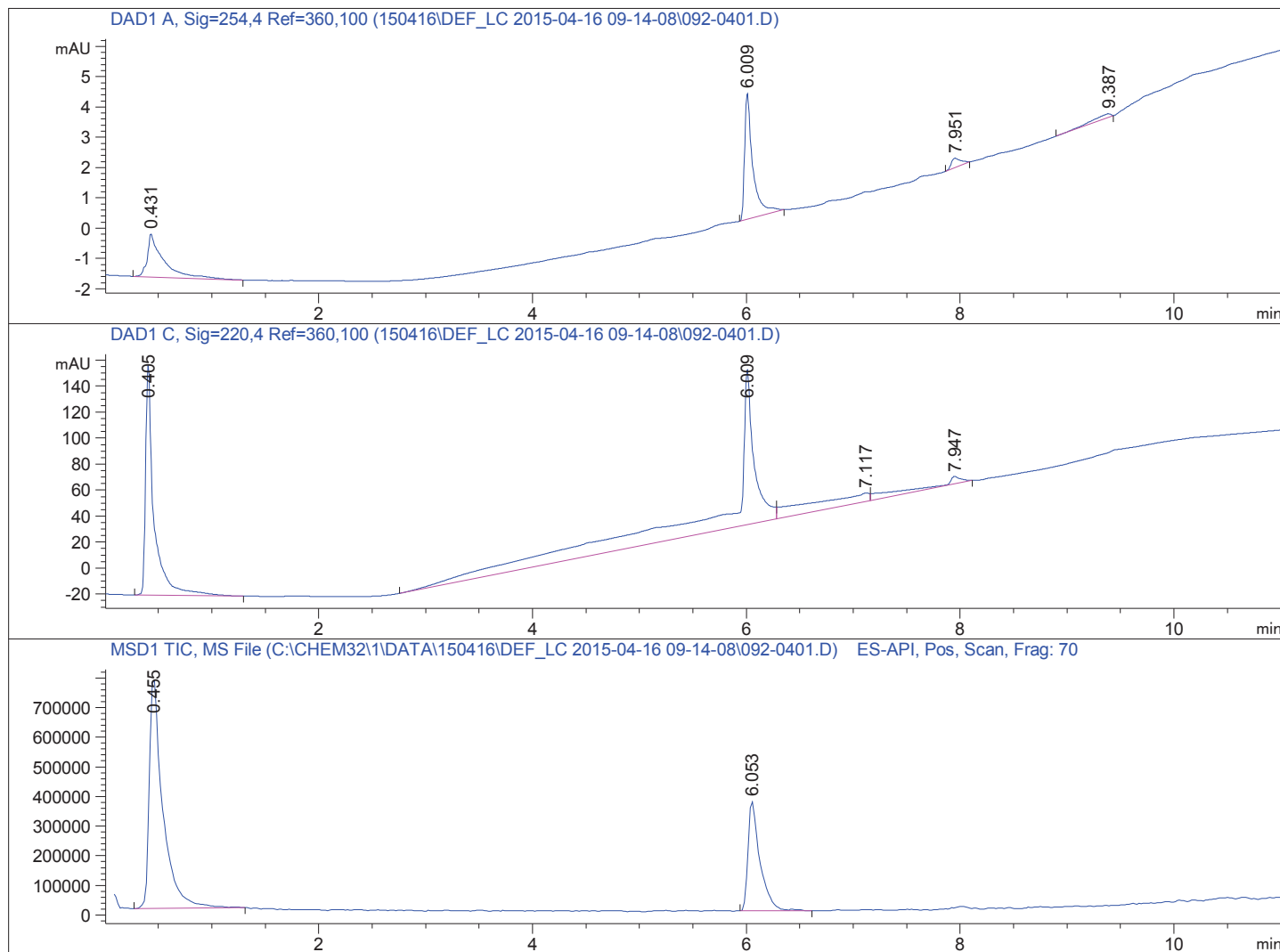
Peak #	RetTime [min]	Type	Width [min]	Area	Height	Area %
1	0.455	BB	0.1241	6.78475e6	7.79598e5	70.2991
2	6.053	BB	0.1134	2.86652e6	3.68500e5	29.7009

Totals : 9.65127e6 1.14810e6

=====
*** End of Report ***

Sample Name: test150416 2

```
=====
Acq. Operator   : SYSTEM                      Seq. Line :    4
Acq. Instrument : LCMS 1                     Location  : Vial 92
Injection Date  : 4/16/2015 10:02:23 AM      Inj       :    1
                                           Inj Volume: 1.000 µl
Acq. Method     : C:\CHEM32\1\DATA\150416\DEF_LC 2015-04-16 09-14-08\STANDARD_220_254.M
Last changed    : 4/16/2015 9:14:08 AM by SYSTEM
Analysis Method : C:\CHEM32\1\DATA\150416\DEF_LC 2015-04-16 09-14-08\STANDARD_220_254.M (
                  Sequence Method)
Last changed    : 4/16/2015 11:27:23 AM by SYSTEM
                  (modified after loading) (Current integration events modified)
Method Info     : Standard ACN:Wasser 20:80 -> 97:3 Flow 0.4 ml/min 220 nm, 254 nm
=====
```



Spectra averaged over upper half of peaks.

Number of ions per peak: 6

Display Time Range(+/- mins): 1.0

Sample Name: test150416 2

DataPath : C:\CHEM32\1\DATA\150416\DEF_LC 2015-04-16 09-14-08\092-0401.D

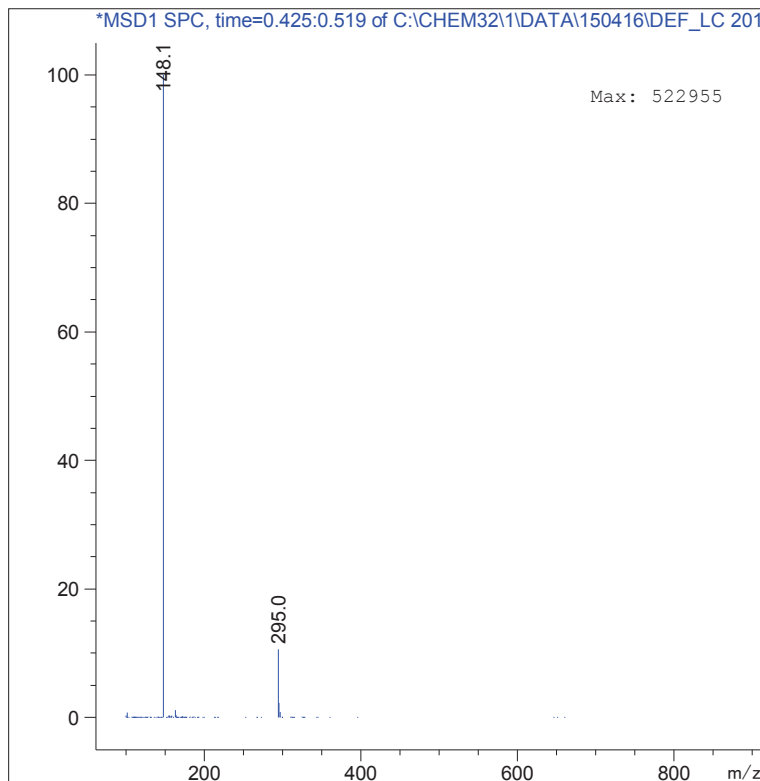
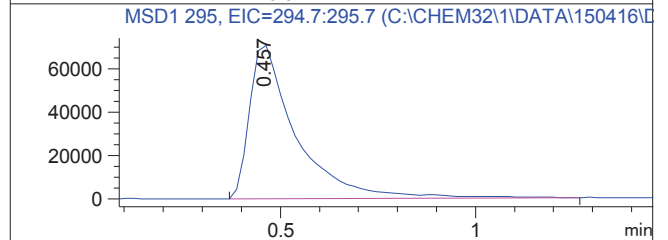
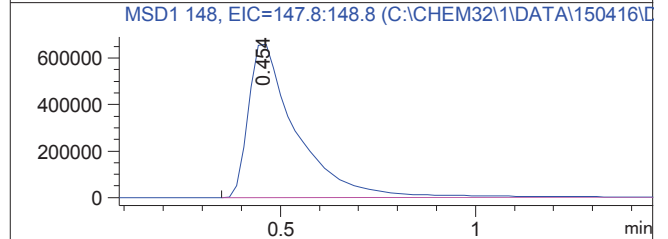
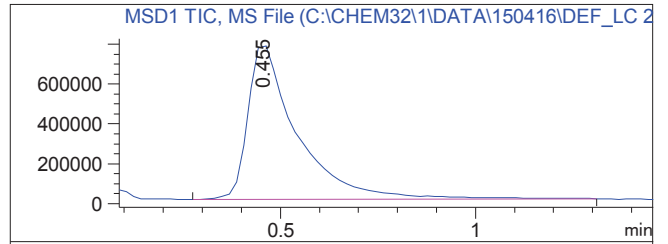
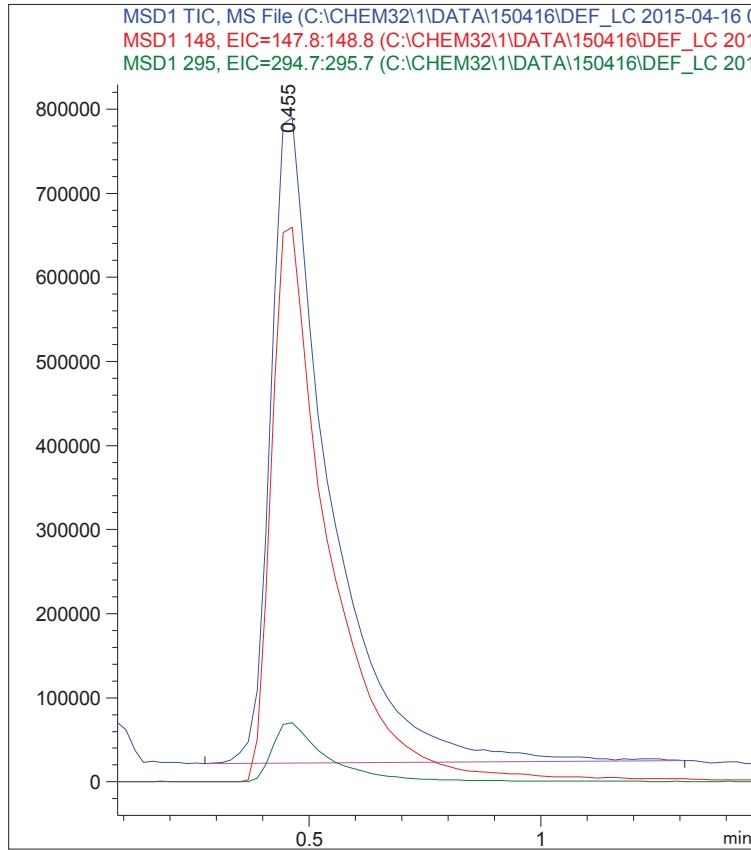
DateTime: 16 Apr 15 10:02 am +0100

Operator : SYSTEM

Vial : 92

Sample : test150416 2

Retention : 0.455 minutes



Sample Name: test150416 2

DataPath : C:\CHEM32\1\DATA\150416\DEF_LC 2015-04-16 09-14-08\092-0401.D

DateTime: 16 Apr 15 10:02 am +0100

Operator : SYSTEM

Vial : 92

Sample : test150416 2

Retention : 6.053 minutes

