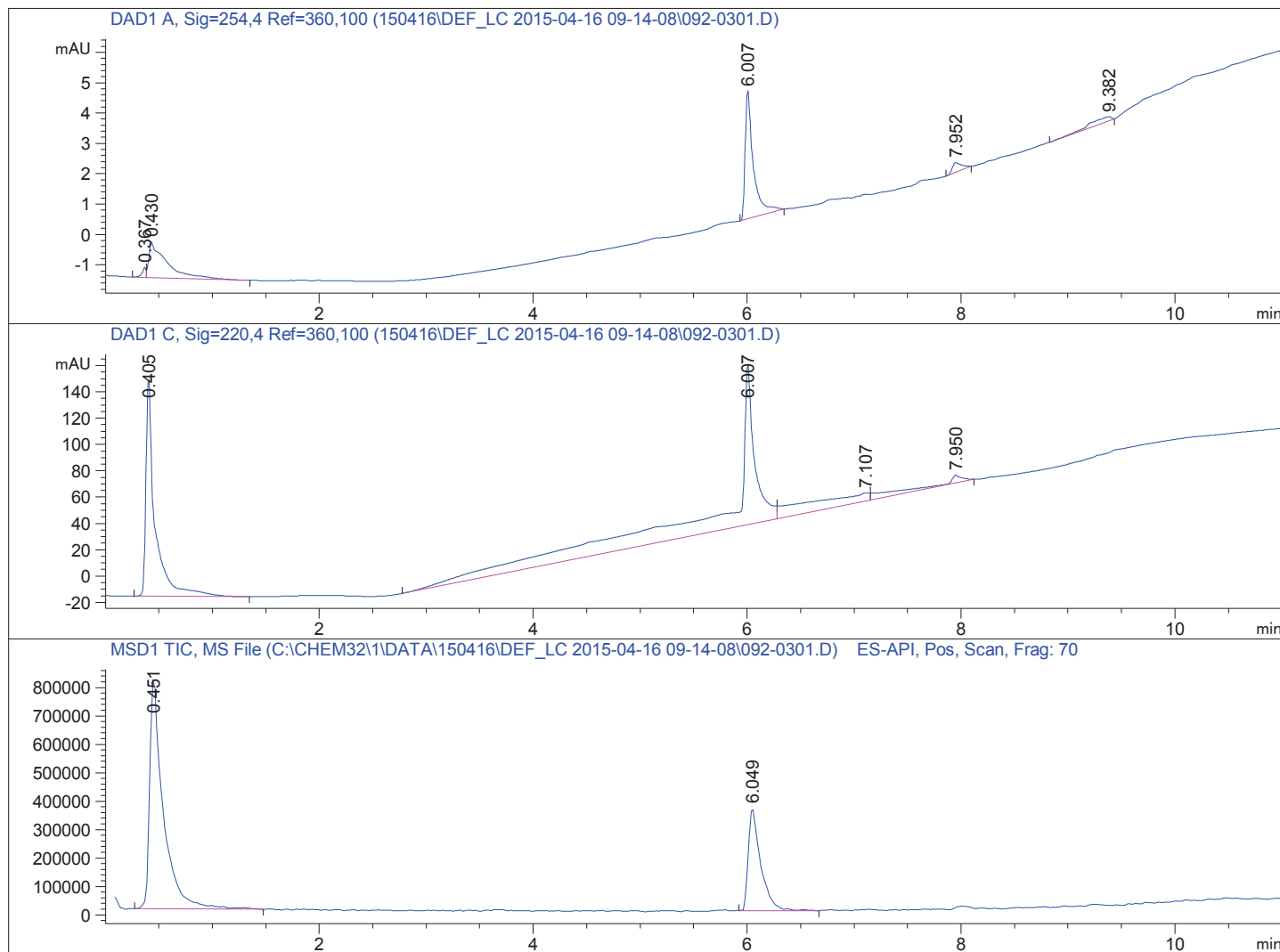


Sample Name: test150416 1

```

=====
Acq. Operator   : SYSTEM                      Seq. Line :    3
Acq. Instrument : LCMS 1                     Location  : Vial 92
Injection Date  : 4/16/2015 9:47:06 AM      Inj       :    1
                                           Inj Volume: 1.000 µl
Acq. Method     : C:\CHEM32\1\DATA\150416\DEF_LC 2015-04-16 09-14-08\STANDARD_220_254.M
Last changed    : 4/16/2015 9:14:08 AM by SYSTEM
Analysis Method : C:\CHEM32\1\DATA\150416\DEF_LC 2015-04-16 09-14-08\STANDARD_220_254.M (
                  Sequence Method)
Last changed    : 4/16/2015 11:20:46 AM by SYSTEM
                  (modified after loading) (Current integration events modified)
Method Info     : Standard ACN:Wasser 20:80 -> 97:3 Flow 0.4 ml/min 220 nm, 254 nm
=====

```



```

=====
                          Area Percent Report
=====

```

```

Sorted By      :      Signal
Multiplier     :      1.0000
Dilution       :      1.0000
Do not use Multiplier & Dilution Factor with ISTDs

```

Signal 1: DAD1 A, Sig=254,4 Ref=360,100

Peak #	RetTime [min]	Type	Width [min]	Area [mAU*s]	Height [mAU]	Area %
1	0.367	BV	0.0342	7.62691e-1	3.23145e-1	1.8610
2	0.430	VB	0.1456	13.72047	1.18016	33.4783
3	6.007	BB	0.0759	22.22175	4.18578	54.2217
4	7.952	BB	0.0879	1.94567	3.15695e-1	4.7475
5	9.382	BB	0.2358	2.33253	1.28475e-1	5.6914

Totals : 40.98312 6.13326

Signal 2: DAD1 C, Sig=220,4 Ref=360,100

Peak #	RetTime [min]	Type	Width [min]	Area [mAU*s]	Height [mAU]	Area %
1	0.405	BB	0.0830	974.86084	164.93250	25.8458
2	6.007	BV	0.2360	2298.82227	120.81698	60.9471
3	7.107	VV	0.7140	364.63770	6.07756	9.6674
4	7.950	VB	0.2869	133.51207	5.74951	3.5397

Totals : 3771.83287 297.57655

Signal 3: MSD1 TIC, MS File

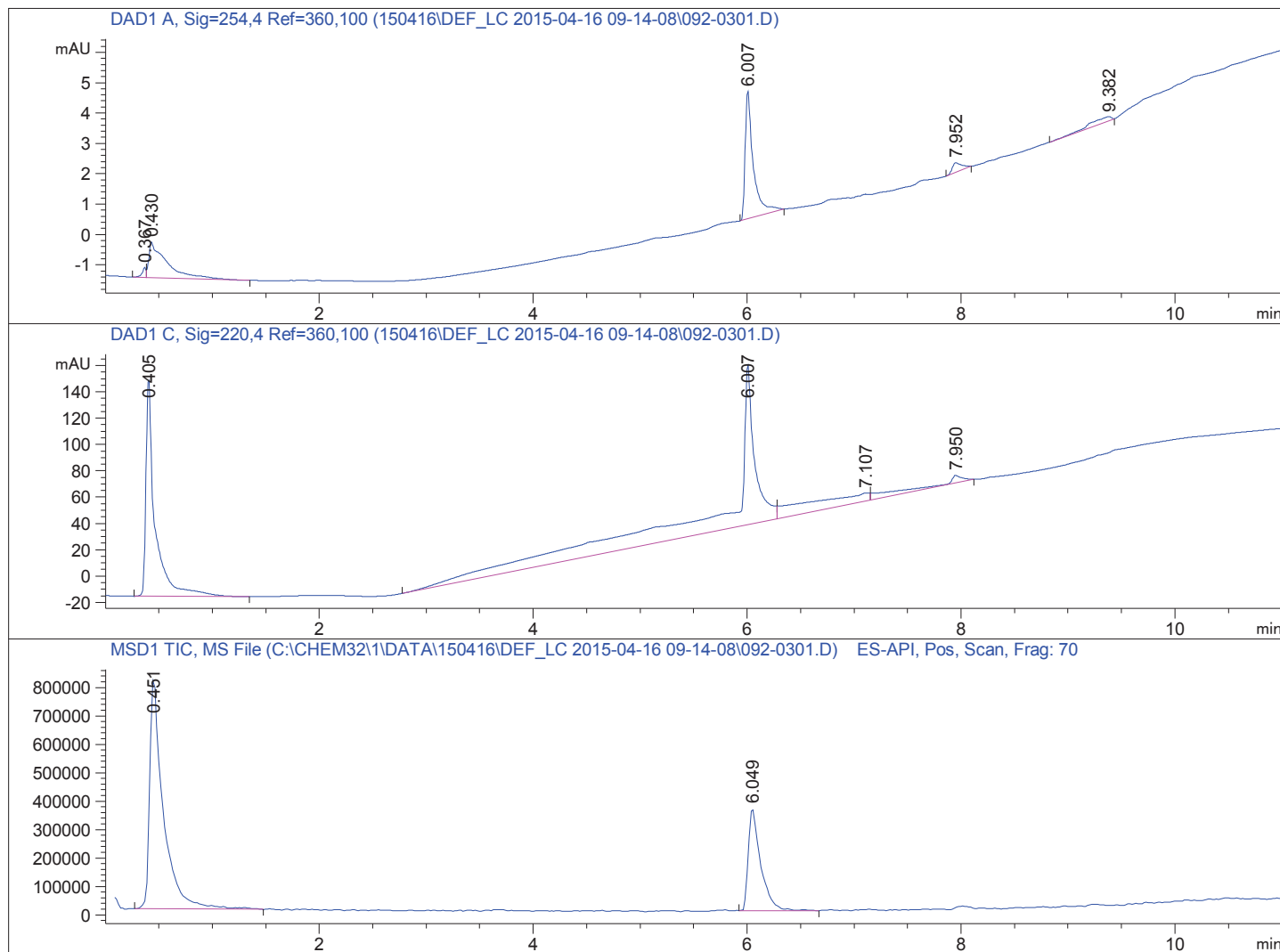
Peak #	RetTime [min]	Type	Width [min]	Area	Height	Area %
1	0.451	BB	0.1198	7.21579e6	8.18702e5	71.3479
2	6.049	BB	0.1169	2.89774e6	3.58707e5	28.6521

Totals : 1.01135e7 1.17741e6

=====
*** End of Report ***

Sample Name: test150416 1

```
=====
Acq. Operator   : SYSTEM                      Seq. Line :    3
Acq. Instrument : LCMS 1                     Location  : Vial 92
Injection Date  : 4/16/2015 9:47:06 AM      Inj       :    1
                                           Inj Volume: 1.000 µl
Acq. Method     : C:\CHEM32\1\DATA\150416\DEF_LC 2015-04-16 09-14-08\STANDARD_220_254.M
Last changed    : 4/16/2015 9:14:08 AM by SYSTEM
Analysis Method : C:\CHEM32\1\DATA\150416\DEF_LC 2015-04-16 09-14-08\STANDARD_220_254.M (
                  Sequence Method)
Last changed    : 4/16/2015 11:22:48 AM by SYSTEM
                  (modified after loading) (Current integration events modified)
Method Info     : Standard ACN:Wasser 20:80 -> 97:3 Flow 0.4 ml/min 220 nm, 254 nm
=====
```



Spectra averaged over upper half of peaks.

Number of ions per peak: 6

Display Time Range(+/- mins): 1.0

Sample Name: test150416 1

DataPath : C:\CHEM32\1\DATA\150416\DEF_LC 2015-04-16 09-14-08\092-0301.D

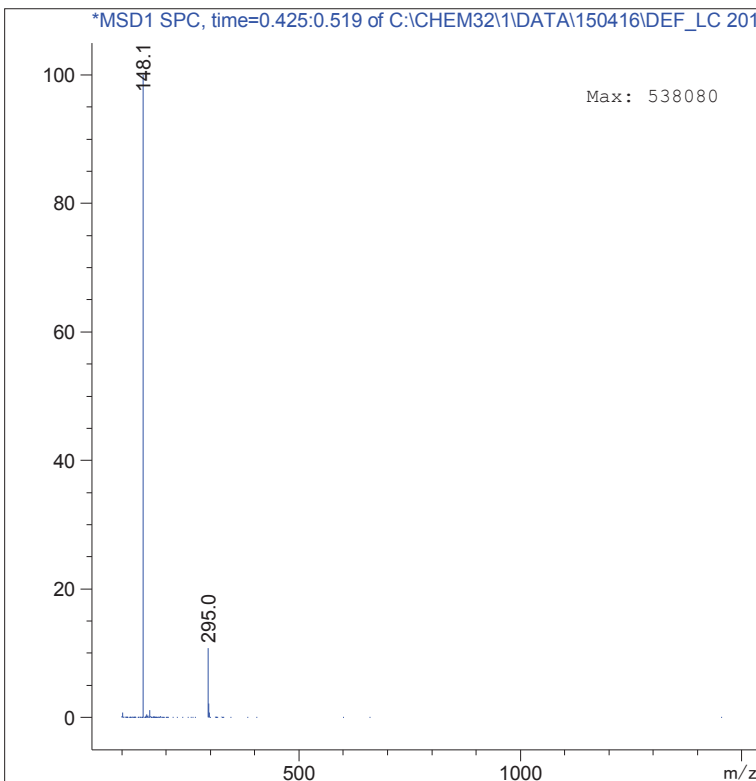
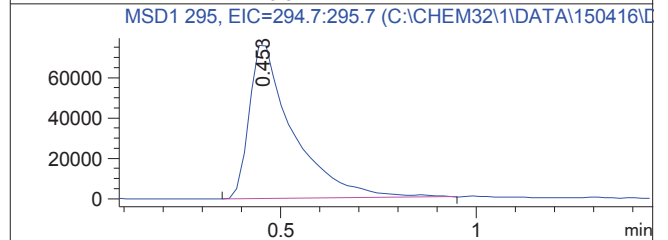
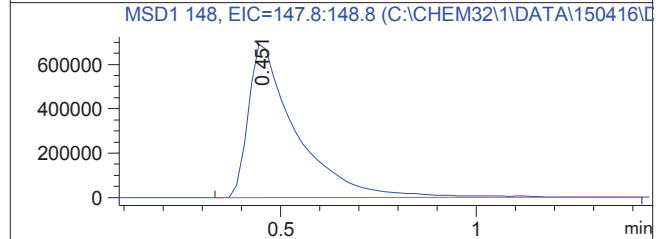
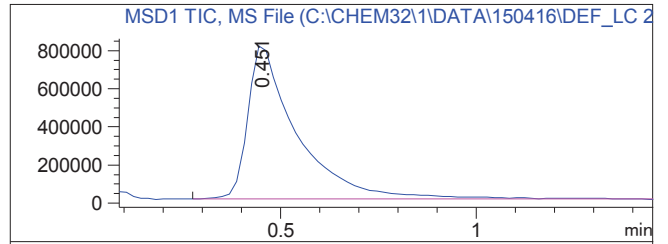
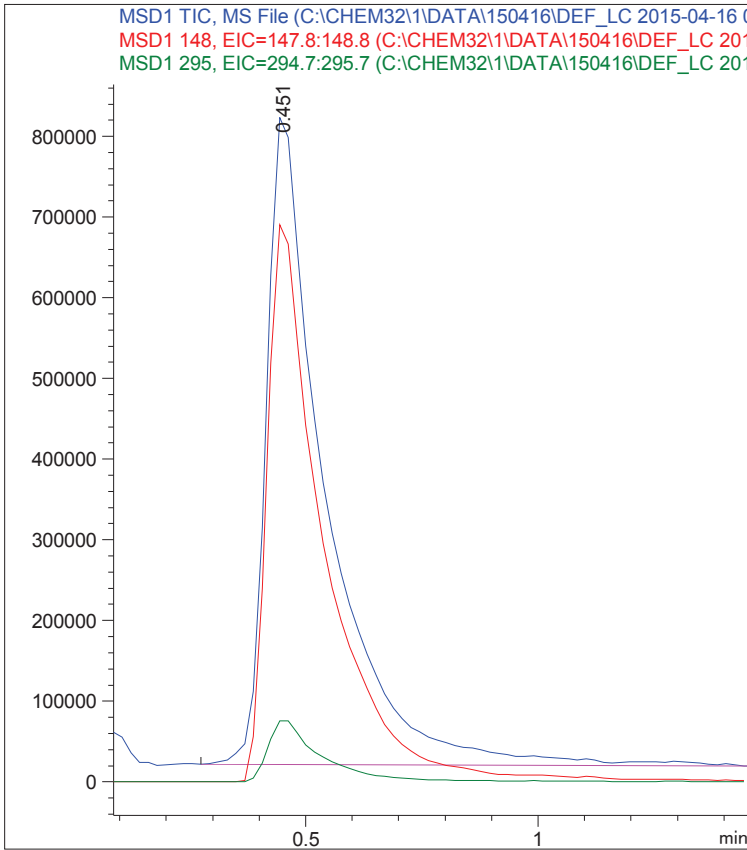
DateTime: 16 Apr 15 9:47 am +0100

Operator : SYSTEM

Vial : 92

Sample : test150416 1

Retention : 0.451 minutes



Sample Name: test150416 1

DataPath : C:\CHEM32\1\DATA\150416\DEF_LC 2015-04-16 09-14-08\092-0301.D

DateTime: 16 Apr 15 9:47 am +0100

Operator : SYSTEM

Vial : 92

Sample : test150416 1

Retention : 6.049 minutes

