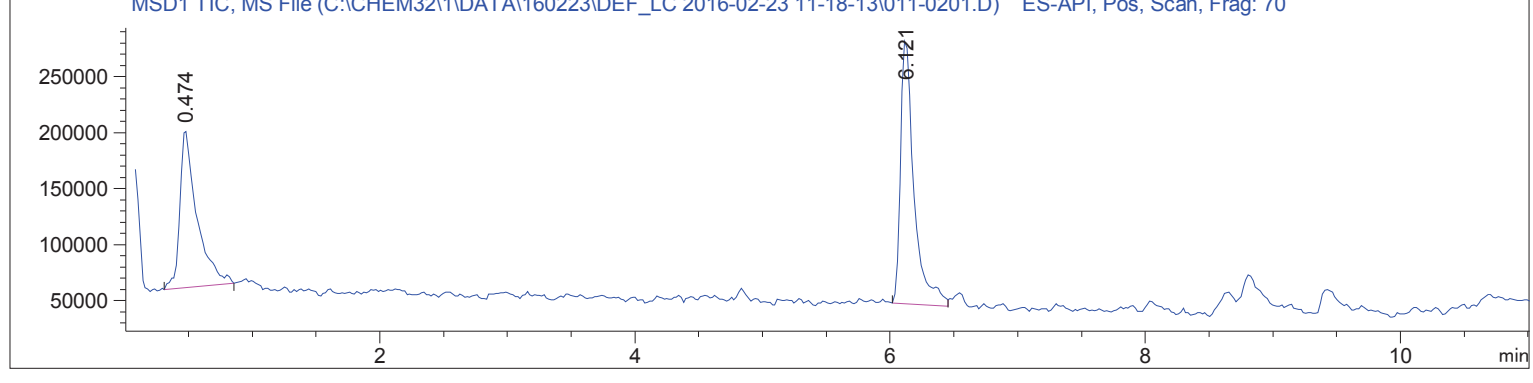
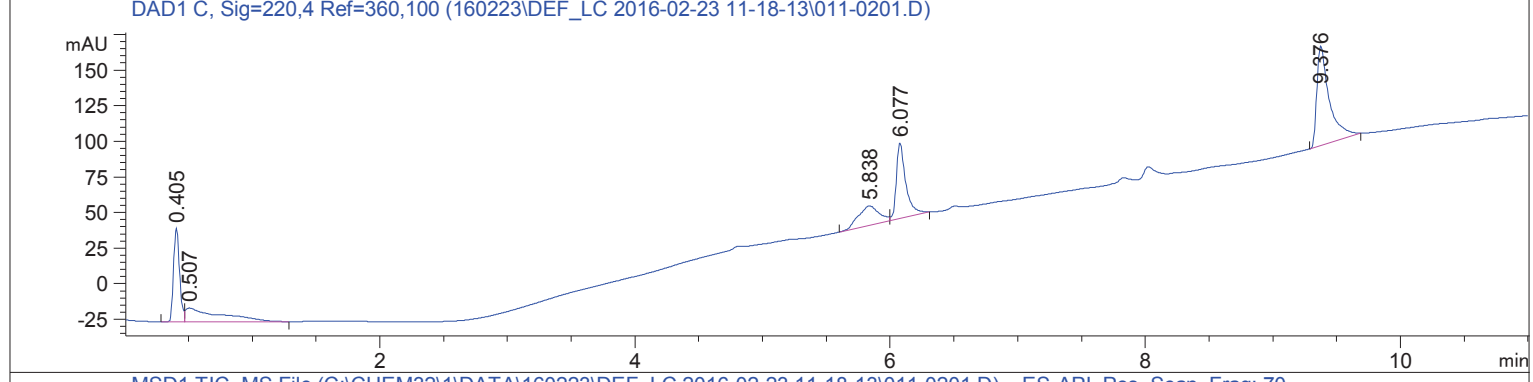
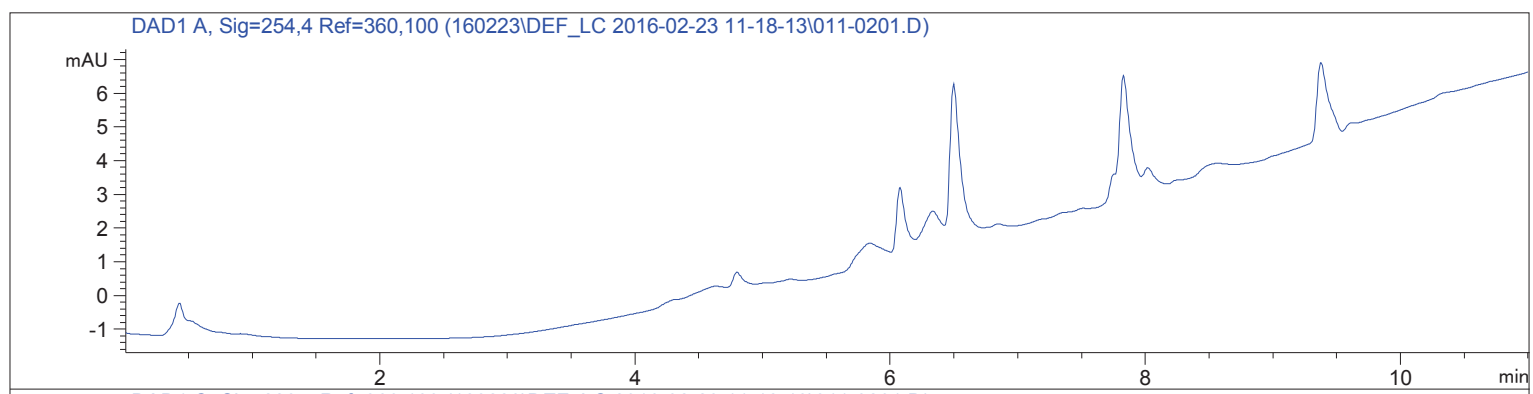


Sample Name: Test\_160223

```

=====
Acq. Operator   : SYSTEM                               Seq. Line :    2
Acq. Instrument : LCMS 1                               Location  : Vial 11
Injection Date  : 2/23/2016 11:35:34 AM              Inj       :    1
                                                    Inj Volume: 1.000 µl

Acq. Method    : C:\CHEM32\1\DATA\160223\DEF_LC 2016-02-23 11-18-13\STANDARD_220_254.M
Last changed   : 2/23/2016 11:18:13 AM by SYSTEM
Analysis Method: C:\CHEM32\1\DATA\160223\DEF_LC 2016-02-23 11-18-13\STANDARD_220_254.M (
Sequence Method)
Last changed   : 2/25/2016 9:02:20 AM by SYSTEM
                (modified after loading)
Method Info    : Standard ACN:Wasser 20:80 -> 97:3 Flow 0.4 ml/min 220 nm, 254 nm
    
```



=====  
Area Percent Report  
=====

```

Sorted By      :      Signal
Multiplier     :      1.0000
Dilution       :      1.0000
Do not use Multiplier & Dilution Factor with ISTDs
    
```

Signal 1: DAD1 A, Sig=254,4 Ref=360,100

Signal 2: DAD1 C, Sig=220,4 Ref=360,100

Peak #	RetTime [min]	Type	Width [min]	Area [mAU*s]	Height [mAU]	Area %
1	0.405	BV	0.0504	216.08443	65.69617	16.6272
2	0.507	VB	0.2420	184.51593	9.60863	14.1981
3	5.838	BV	0.1600	154.60118	13.66665	11.8962
4	6.077	VB	0.0760	273.10330	53.09849	21.0147
5	9.376	BB	0.0965	471.27954	70.02137	36.2639

Totals : 1299.58438 212.09132

Signal 3: MSD1 TIC, MS File

Peak #	RetTime [min]	Type	Width [min]	Area	Height	Area %
1	0.474	BB	0.1310	1.31582e6	1.41667e5	43.2297
2	6.121	BV	0.1074	1.72797e6	2.37865e5	56.7703

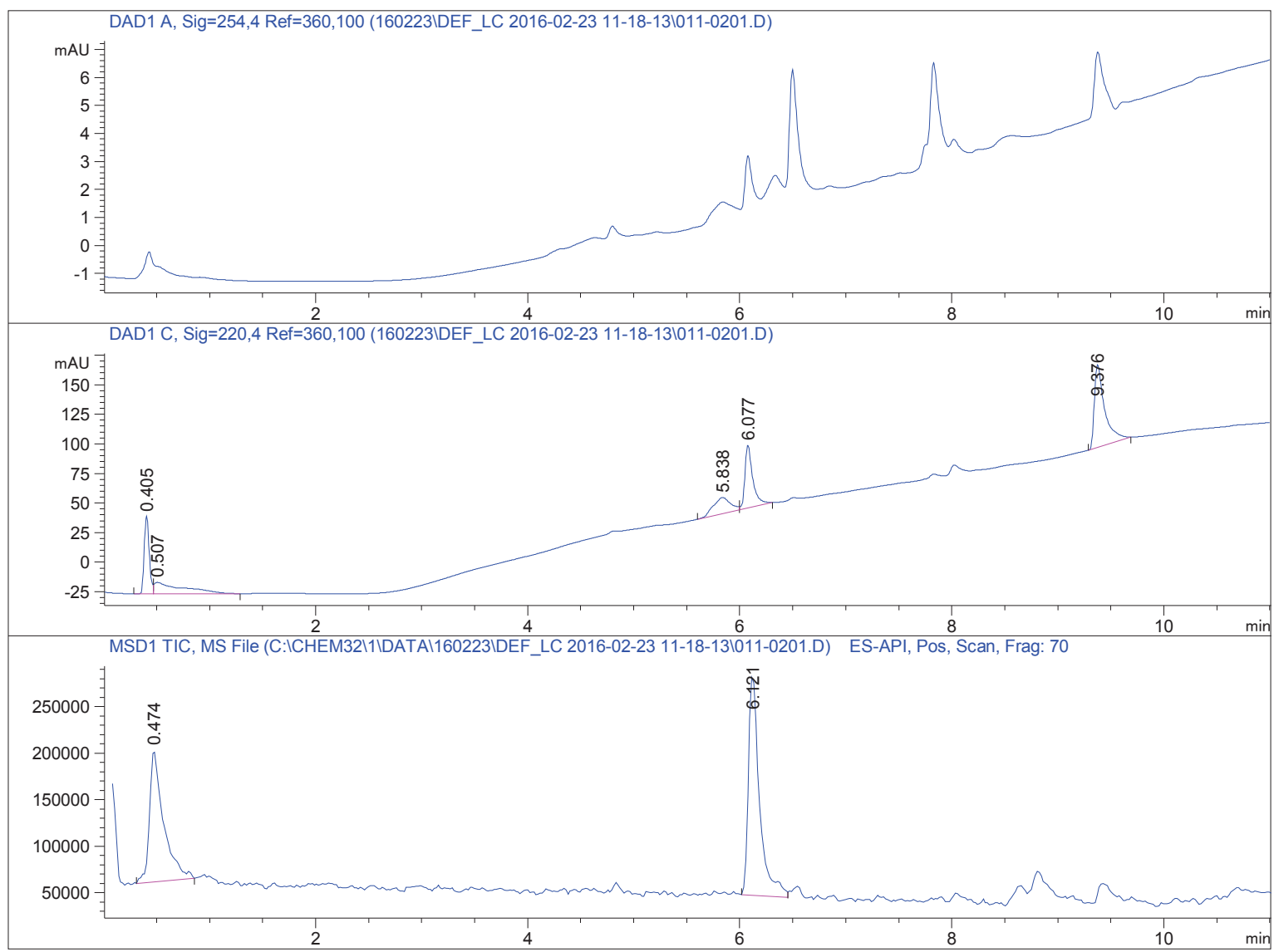
Totals : 3.04380e6 3.79532e5

=====  
\*\*\* End of Report \*\*\*

Sample Name: Test\_160223

=====

Acq. Operator	: SYSTEM	Seq. Line	: 2
Acq. Instrument	: LCMS 1	Location	: Vial 11
Injection Date	: 2/23/2016 11:35:34 AM	Inj	: 1
		Inj Volume	: 1.000 µl
Acq. Method	: C:\CHEM32\1\DATA\160223\DEF_LC 2016-02-23 11-18-13\STANDARD_220_254.M		
Last changed	: 2/23/2016 11:18:13 AM by SYSTEM		
Analysis Method	: C:\CHEM32\1\DATA\160223\DEF_LC 2016-02-23 11-18-13\STANDARD_220_254.M ( Sequence Method)		
Last changed	: 2/25/2016 9:03:19 AM by SYSTEM (modified after loading)		
Method Info	: Standard ACN:Wasser 20:80 -> 97:3 Flow 0.4 ml/min 220 nm, 254 nm		



Spectra averaged over upper half of peaks.  
Number of ions per peak: 6  
Display Time Range(+/- mins): 1.0

Sample Name: Test\_160223

DataPath : C:\CHEM32\1\DATA\160223\DEF\_LC 2016-02-23 11-18-13\011-0201.D

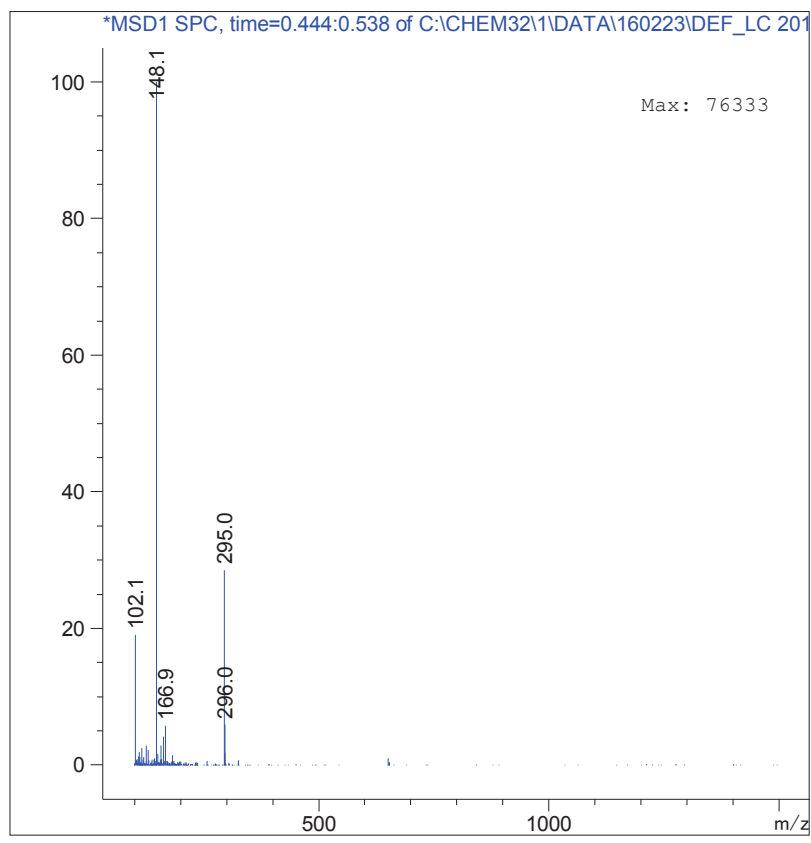
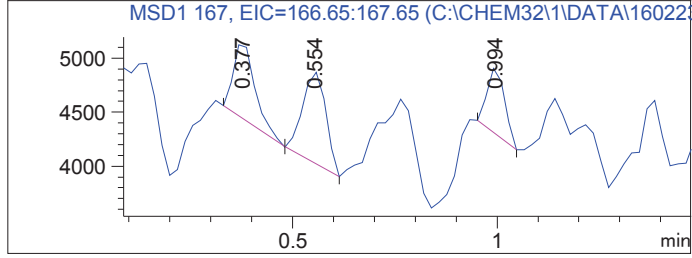
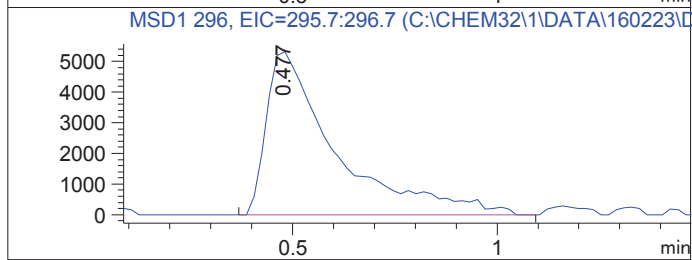
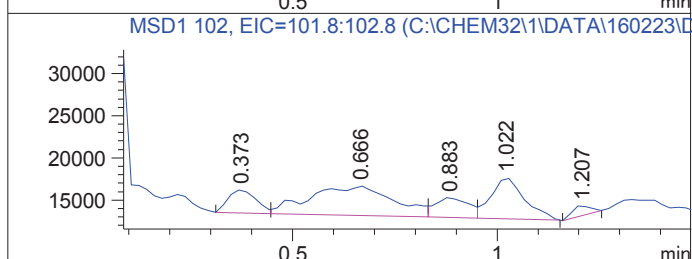
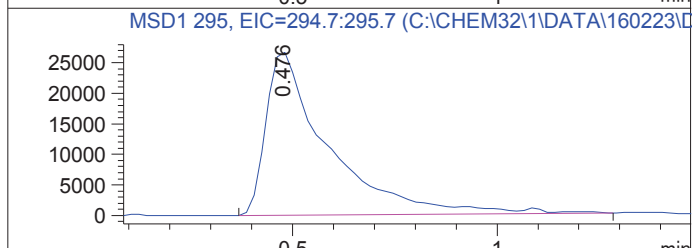
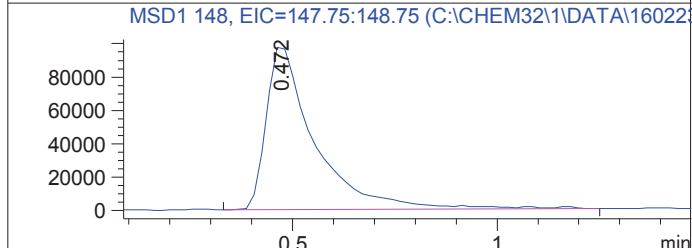
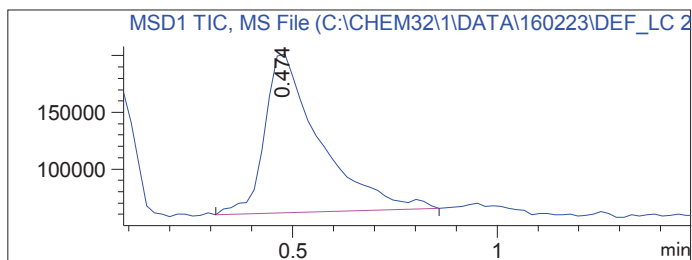
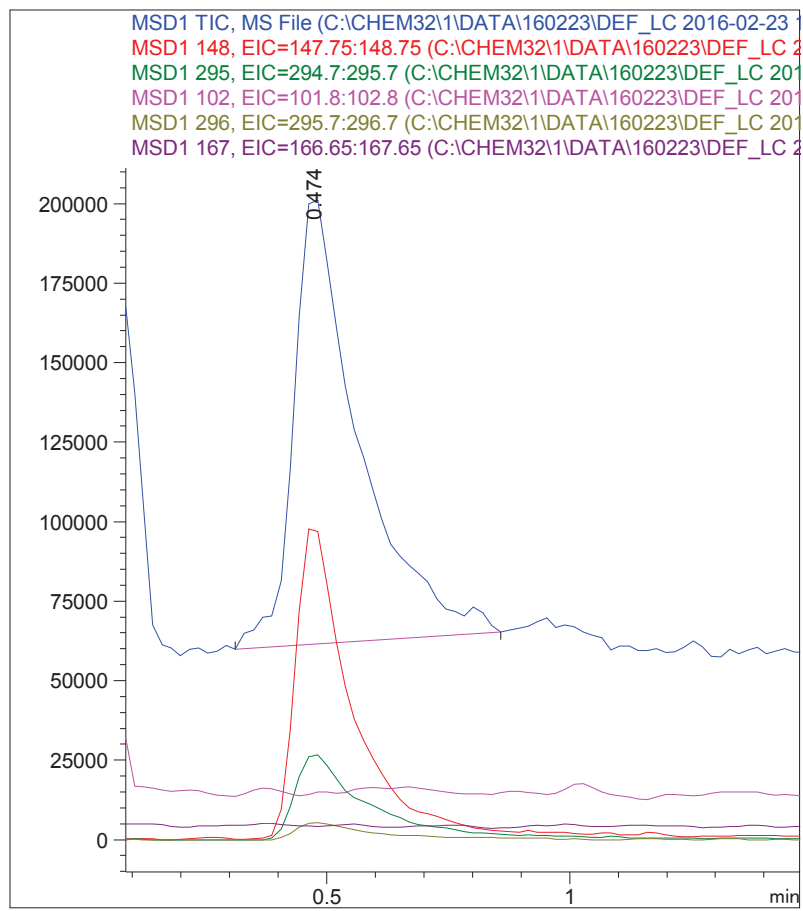
DateTime: 23 Feb 16 11:35 am +0100

Operator : SYSTEM

Vial : 11

Sample : Test\_160223

Retention : 0.474 minutes



Sample Name: Test\_160223

DataPath : C:\CHEM32\1\DATA\160223\DEF\_LC 2016-02-23 11-18-13\011-0201.D

DateTime: 23 Feb 16 11:35 am +0100

Operator : SYSTEM

Vial : 11

Sample : Test\_160223

Retention : 6.121 minutes

