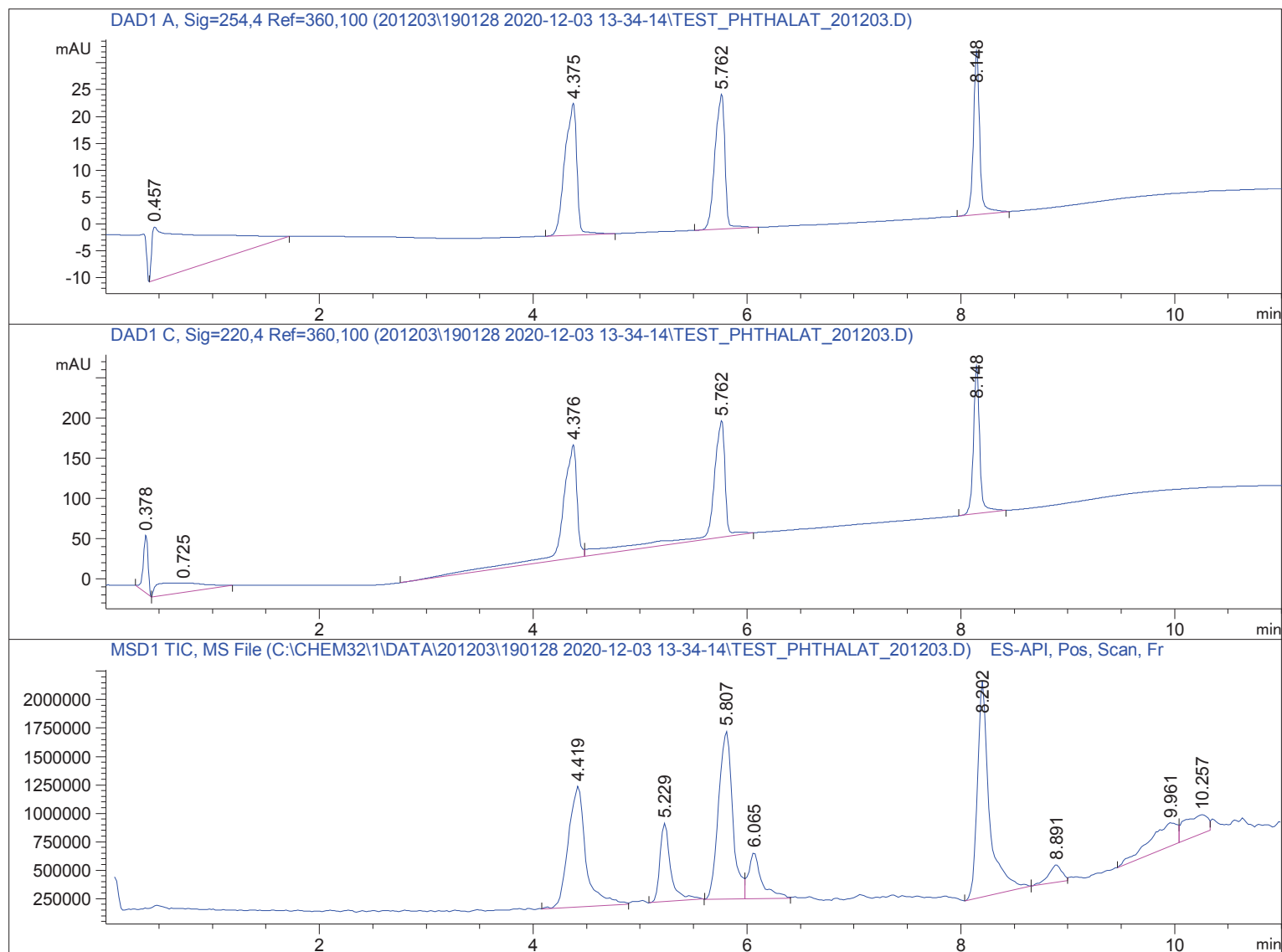


Sample Name: Test\_Phthalat\_201203

```

=====
Acq. Operator   : SYSTEM                      Seq. Line :    2
Acq. Instrument : LCMS 1                     Location  : Vial 2
Injection Date  : 12/3/2020 2:52:41 PM      Inj       :    1
                                           Inj Volume: 1.000 µl
Acq. Method     : C:\CHEM32\1\DATA\201203\190128 2020-12-03 13-34-14\STANDARD_220_254.M
Last changed    : 12/3/2020 1:34:14 PM by SYSTEM
Analysis Method : C:\CHEM32\1\DATA\201203\190128 2020-12-03 13-34-14\STANDARD_220_254.M (
Sequence Method)
Last changed    : 12/4/2020 9:19:24 AM by SYSTEM
                 (modified after loading)
Method Info     : Standard ACN:Wasser 20:80 -> 97:3 Flow 0.4 ml/min 220 nm, 254 nm
=====

```



```

=====
                          Area Percent Report
=====

```

```

Sorted By       :      Signal
Multiplier      :      1.0000
Dilution       :      1.0000
Do not use Multiplier & Dilution Factor with ISTDs

```

Signal 1: DAD1 A, Sig=254,4 Ref=360,100

Peak #	RetTime [min]	Type	Width [min]	Area [mAU*s]	Height [mAU]	Area %
1	0.457	BB	0.4191	344.39429	9.91924	41.9126
2	4.375	BB	0.1067	190.96416	24.56271	23.2402
3	5.762	BB	0.0893	161.82649	25.06363	19.6942
4	8.148	BB	0.0617	124.51169	30.48480	15.1530

Totals : 821.69662 90.03037

Signal 2: DAD1 C, Sig=220,4 Ref=360,100

Peak #	RetTime [min]	Type	Width [min]	Area [mAU*s]	Height [mAU]	Area %
1	0.378	BB	0.0477	219.13377	71.66613	5.3972
2	0.725	BB	0.3933	384.53140	11.76672	9.4709
3	4.376	BV	0.1313	1389.58679	140.62738	34.2252
4	5.762	VB	0.1205	1322.50647	144.81346	32.5730
5	8.148	BB	0.0613	744.37427	183.41943	18.3337

Totals : 4060.13271 552.29313

Signal 3: MSD1 TIC, MS File

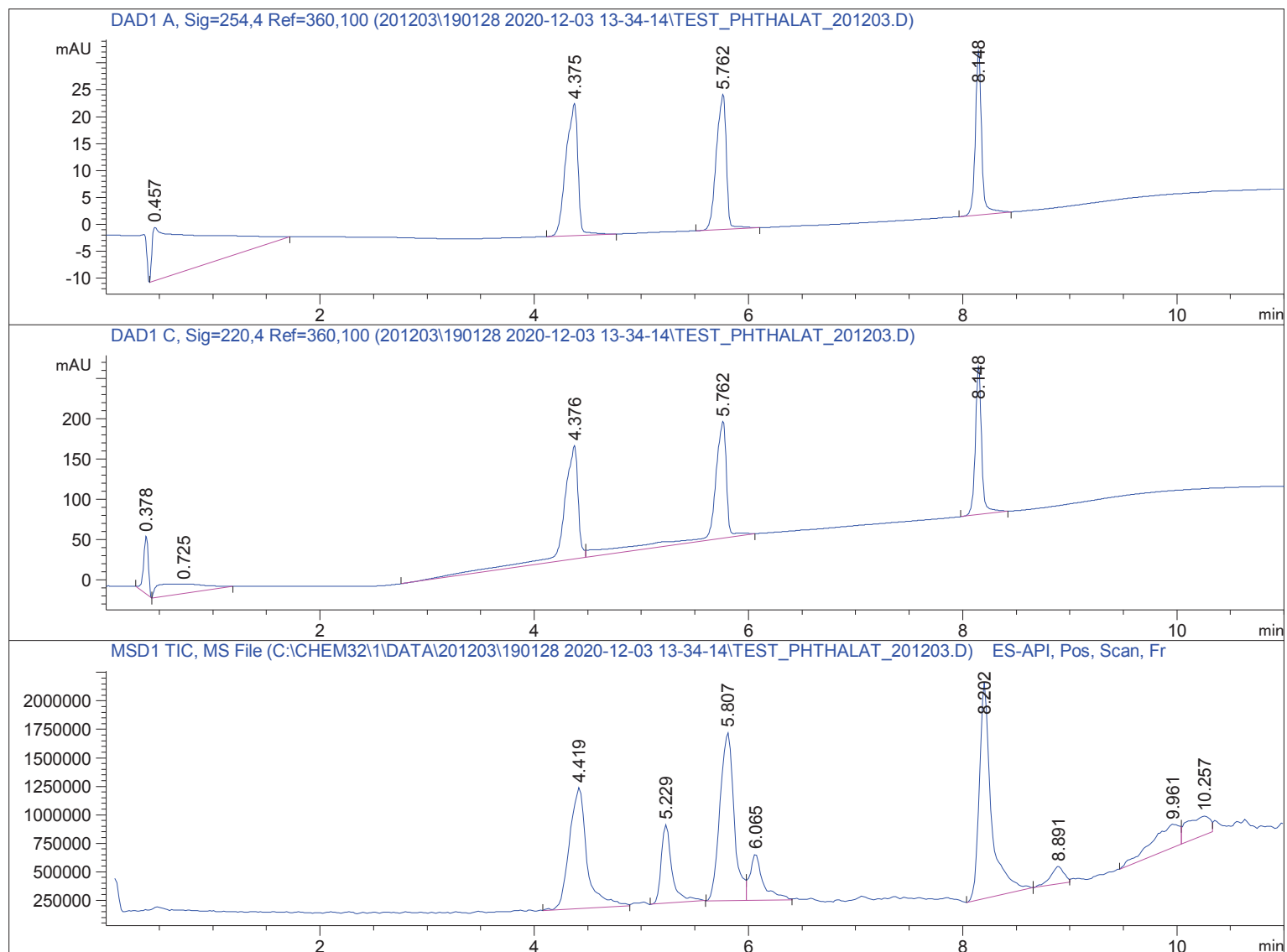
Peak #	RetTime [min]	Type	Width [min]	Area	Height	Area %
1	4.419	BV	0.1790	1.21582e7	1.05980e6	21.3586
2	5.229	BB	0.1097	4.82118e6	6.90243e5	8.4695
3	5.807	BV	0.1464	1.35458e7	1.47867e6	23.7962
4	6.065	VV	0.1235	3.50843e6	4.05796e5	6.1633
5	8.202	BB	0.1135	1.48075e7	1.90100e6	26.0126
6	8.891	BV	0.1230	1.32761e6	1.54345e5	2.3322
7	9.961	BV	0.2357	3.97785e6	2.06828e5	6.9880
8	10.257	VV	0.2248	2.77764e6	1.65257e5	4.8795

Totals : 5.69242e7 6.06195e6

=====  
\*\*\* End of Report \*\*\*

Sample Name: Test\_Phthalat\_201203

```
=====
Acq. Operator   : SYSTEM                               Seq. Line :    2
Acq. Instrument : LCMS 1                               Location  : Vial 2
Injection Date  : 12/3/2020 2:52:41 PM                Inj       :    1
                                                    Inj Volume: 1.000 µl
Acq. Method     : C:\CHEM32\1\DATA\201203\190128 2020-12-03 13-34-14\STANDARD_220_254.M
Last changed    : 12/3/2020 1:34:14 PM by SYSTEM
Analysis Method : C:\CHEM32\1\DATA\201203\190128 2020-12-03 13-34-14\STANDARD_220_254.M (
Sequence Method)
Last changed    : 12/4/2020 9:20:01 AM by SYSTEM
(modified after loading)
Method Info     : Standard ACN:Wasser 20:80 -> 97:3 Flow 0.4 ml/min 220 nm, 254 nm
=====
```



Spectra averaged over upper half of peaks.

Number of ions per peak: 6

Display Time Range(+/- mins): 1.0

Sample Name: Test\_Phthalat\_201203

DataPath : C:\CHEM32\1\DATA\201203\190128 2020-12-03 13-34-14\TEST\_PHTHALAT\_201203.D

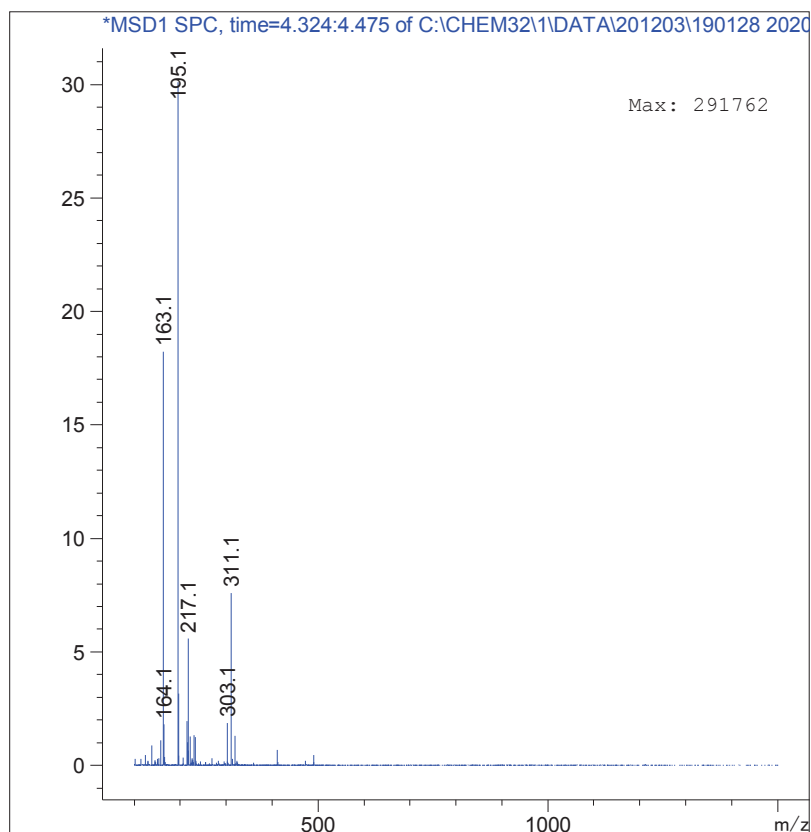
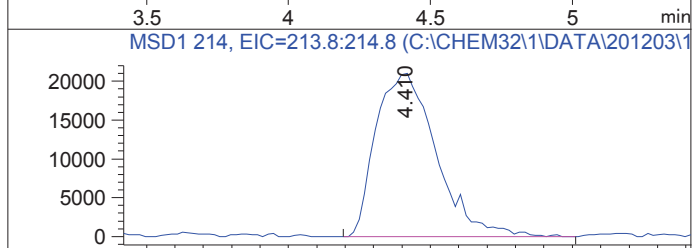
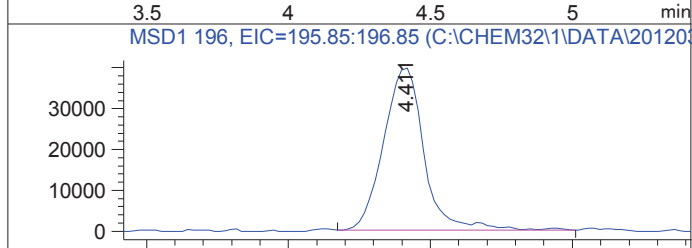
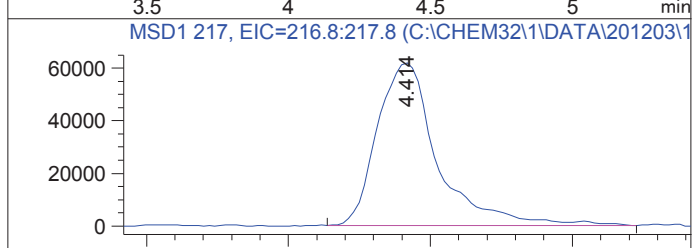
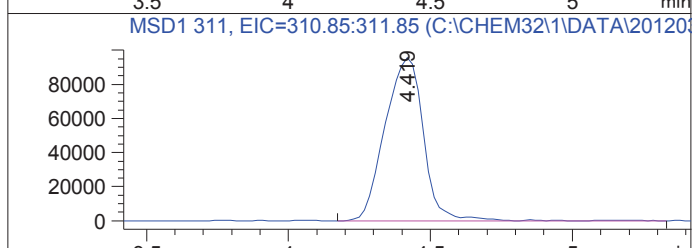
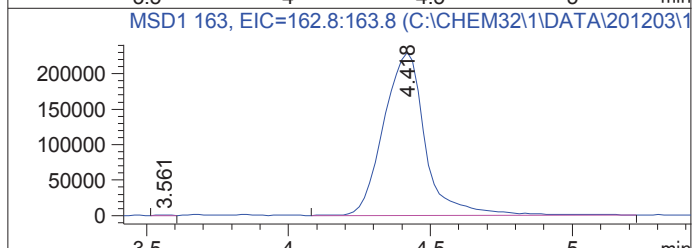
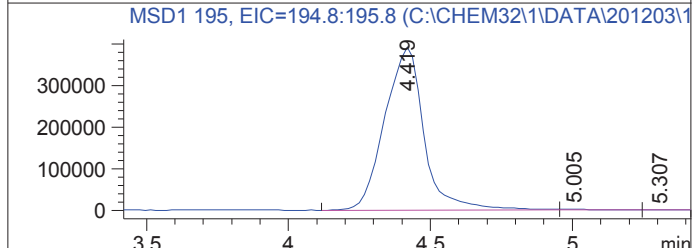
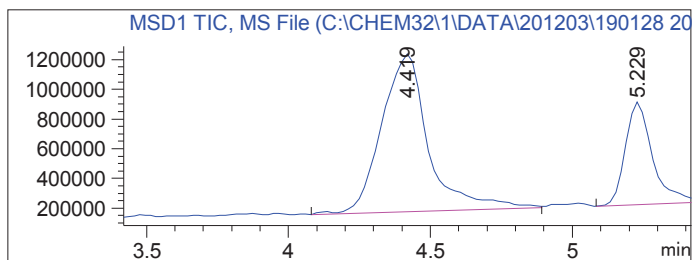
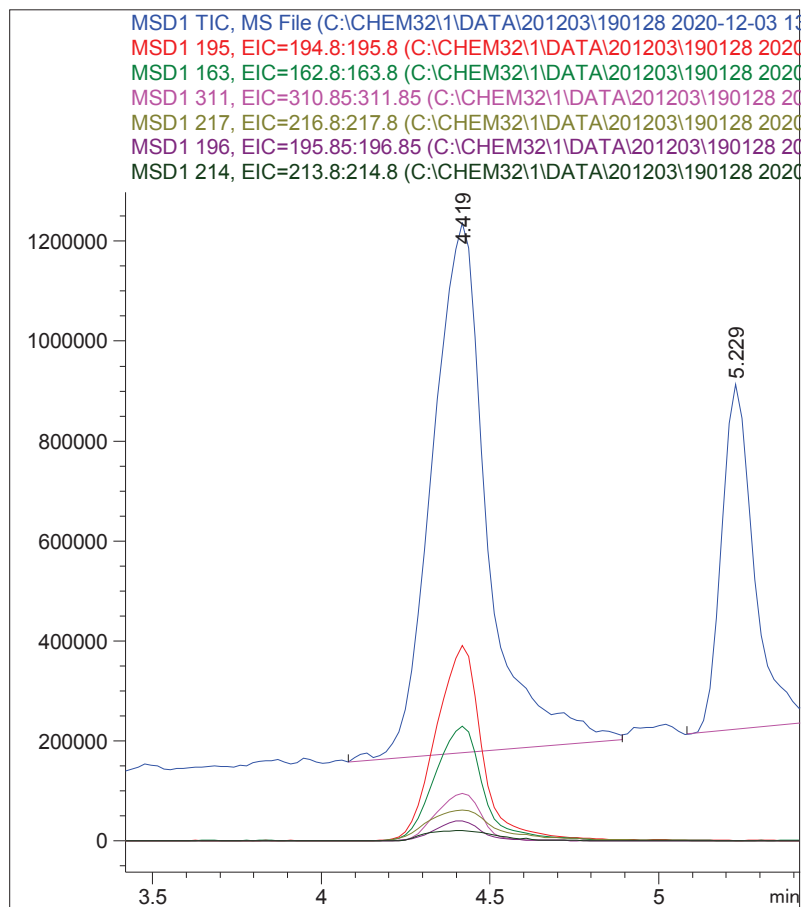
DateTime : 12/04/2020 09:20:04 am

Operator : SYSTEM

Vial : 2

Sample : Test\_Phthalat\_201203

Retention : 4.419 minutes



Sample Name: Test\_Phthalat\_201203

DataPath : C:\CHEM32\1\DATA\201203\190128 2020-12-03 13-34-14\TEST\_PHTHALAT\_201203.D

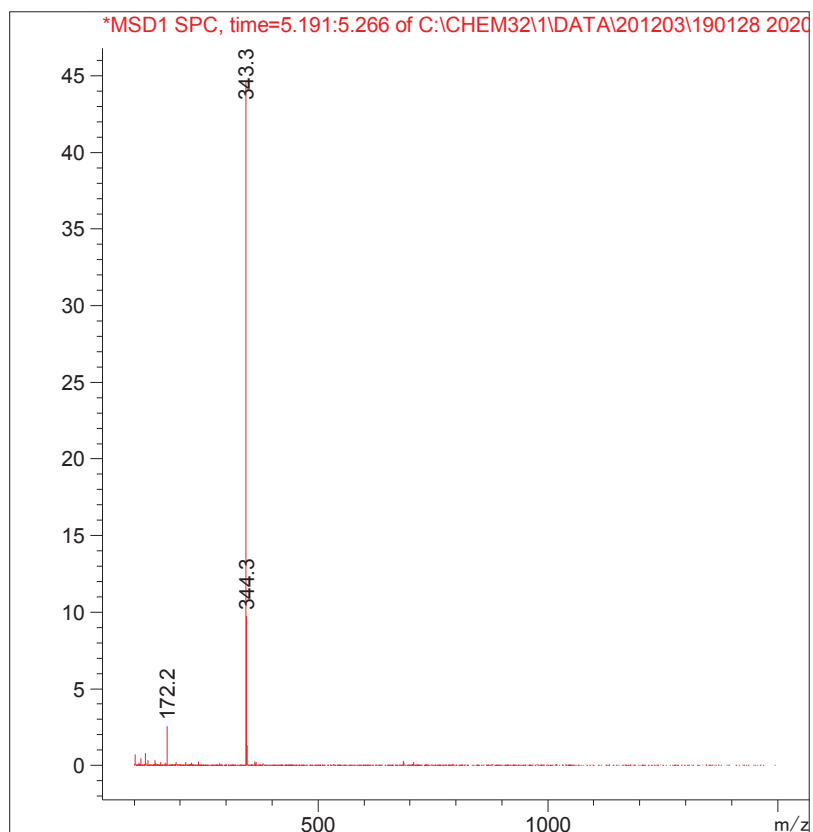
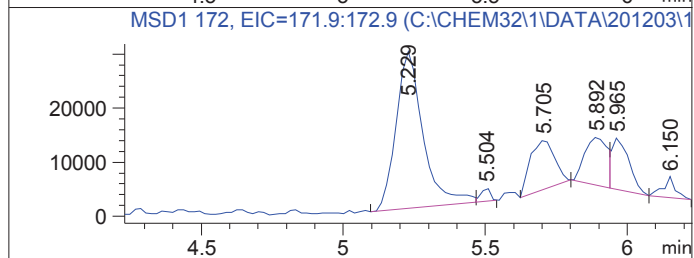
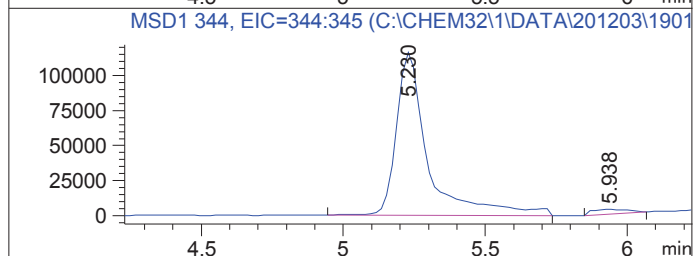
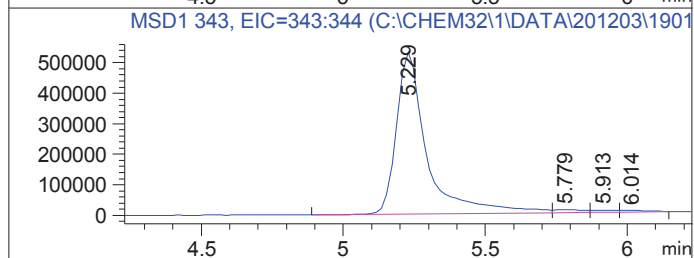
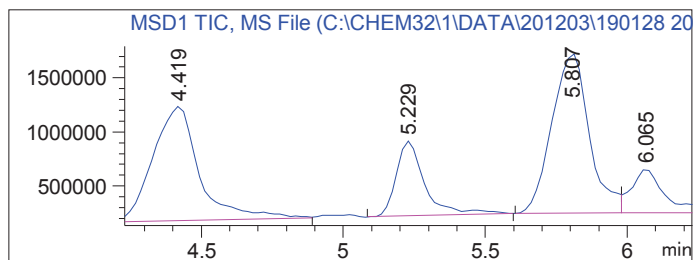
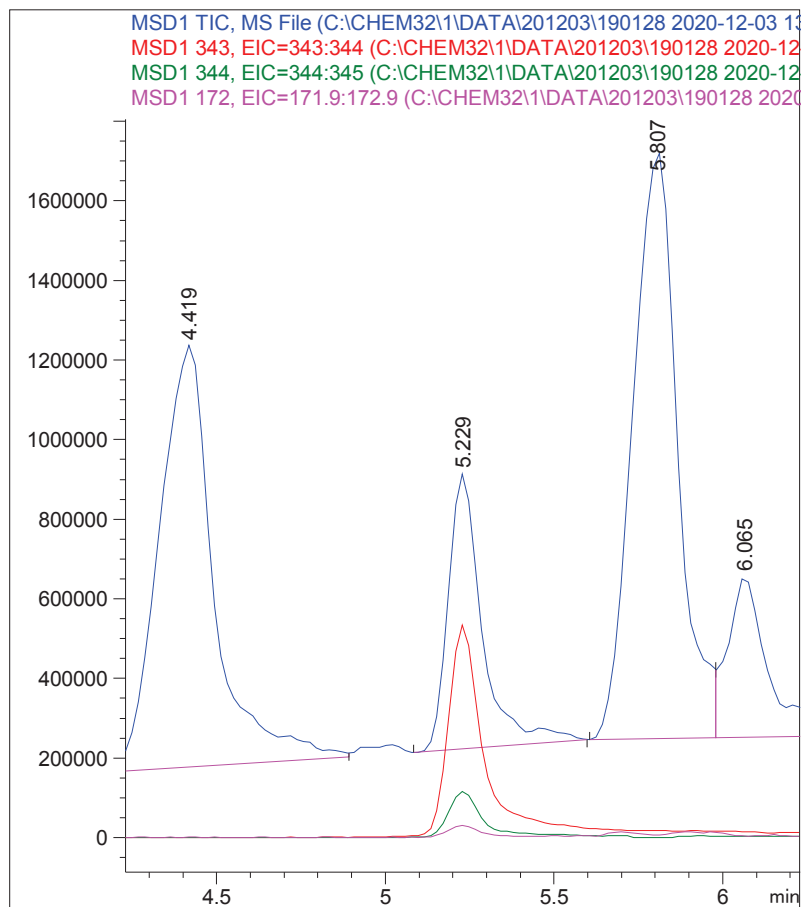
DateTime : 12/04/2020 09:20:05 am

Operator : SYSTEM

Vial : 2

Sample : Test\_Phthalat\_201203

Retention : 5.229 minutes



Sample Name: Test\_Phthalat\_201203

DataPath : C:\CHEM32\1\DATA\201203\190128 2020-12-03 13-34-14\TEST\_PHTHALAT\_201203.D

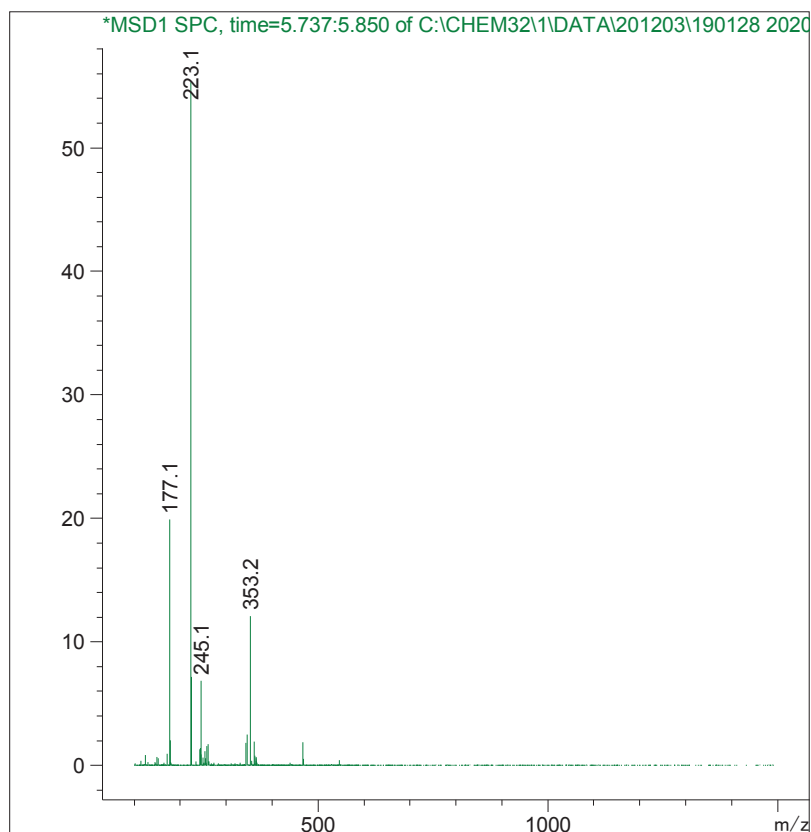
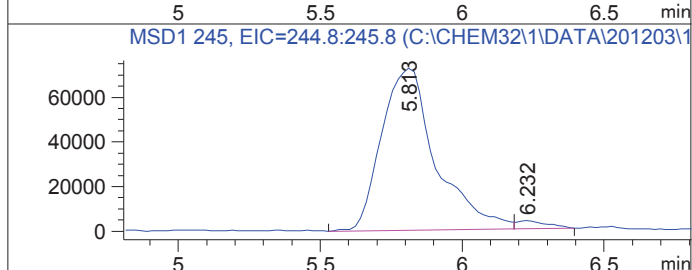
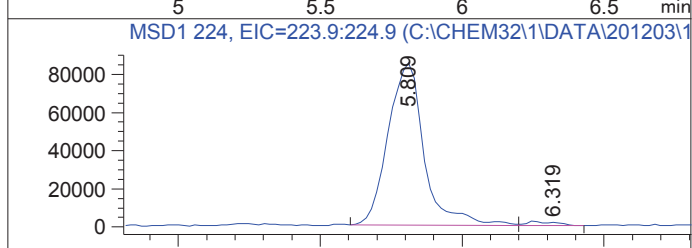
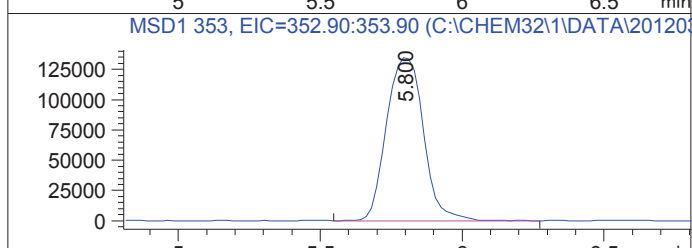
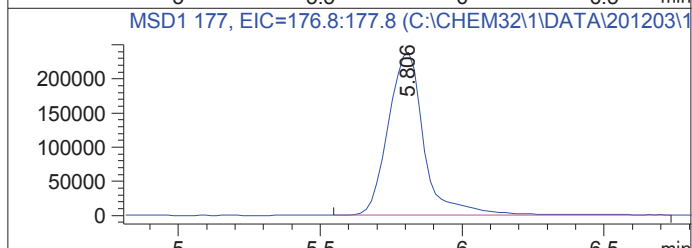
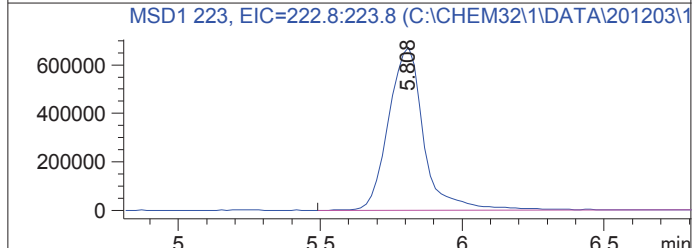
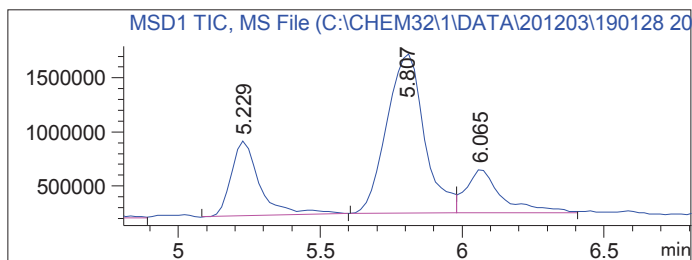
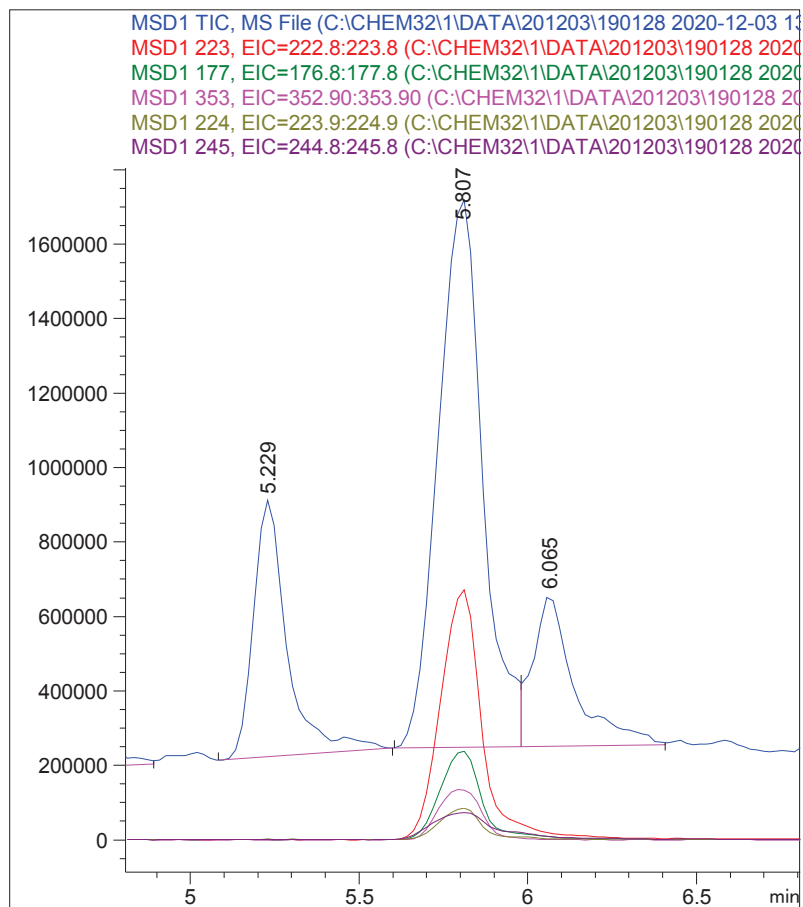
DateTime : 12/04/2020 09:20:05 am

Operator : SYSTEM

Vial : 2

Sample : Test\_Phthalat\_201203

Retention : 5.807 minutes



Sample Name: Test\_Phthalat\_201203

DataPath : C:\CHEM32\1\DATA\201203\190128 2020-12-03 13-34-14\TEST\_PHTHALAT\_201203.D

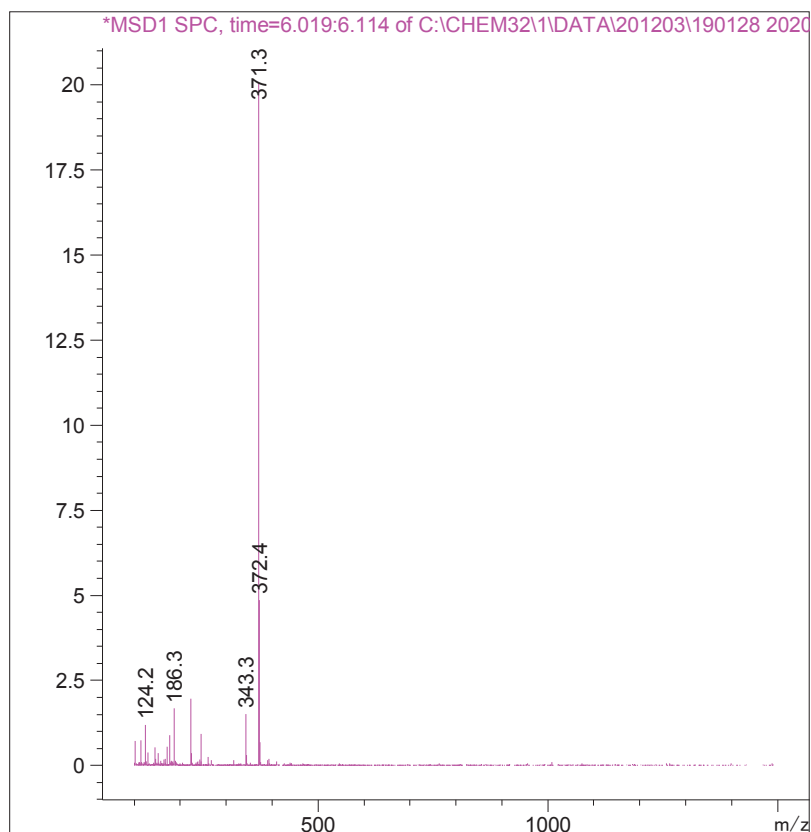
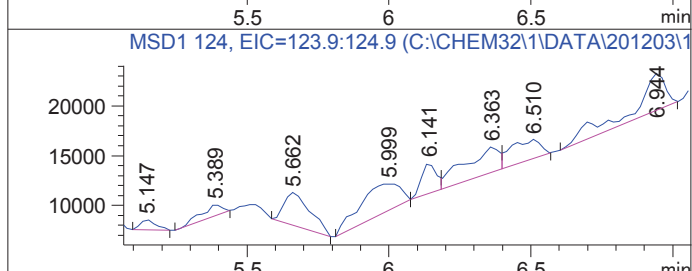
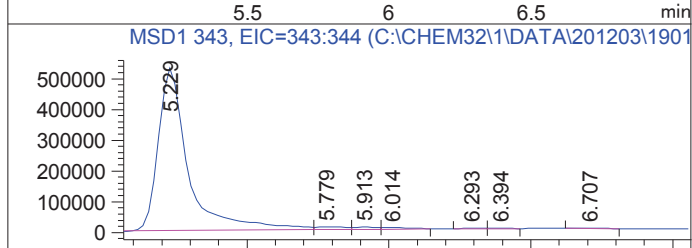
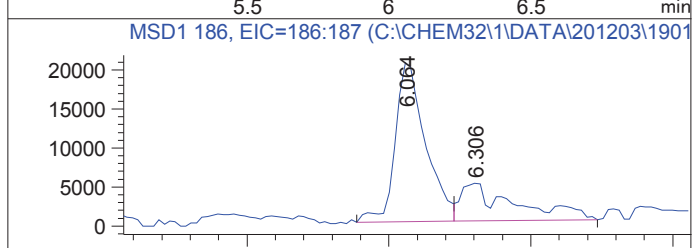
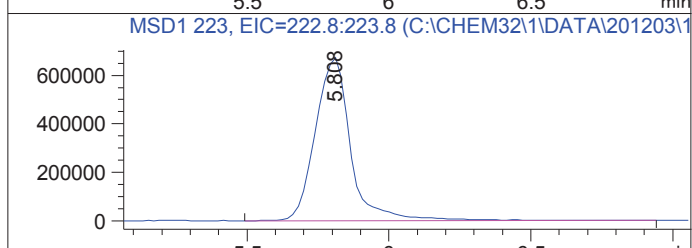
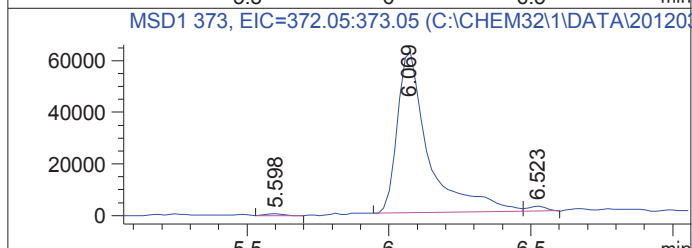
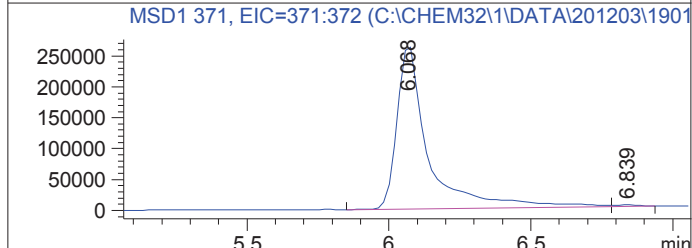
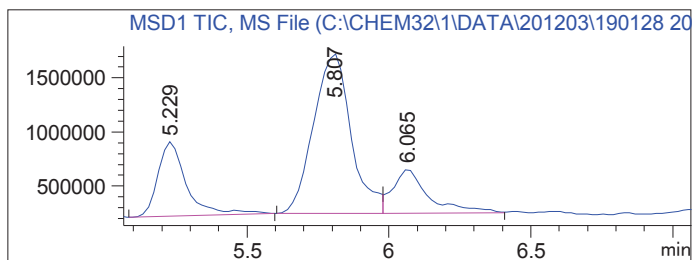
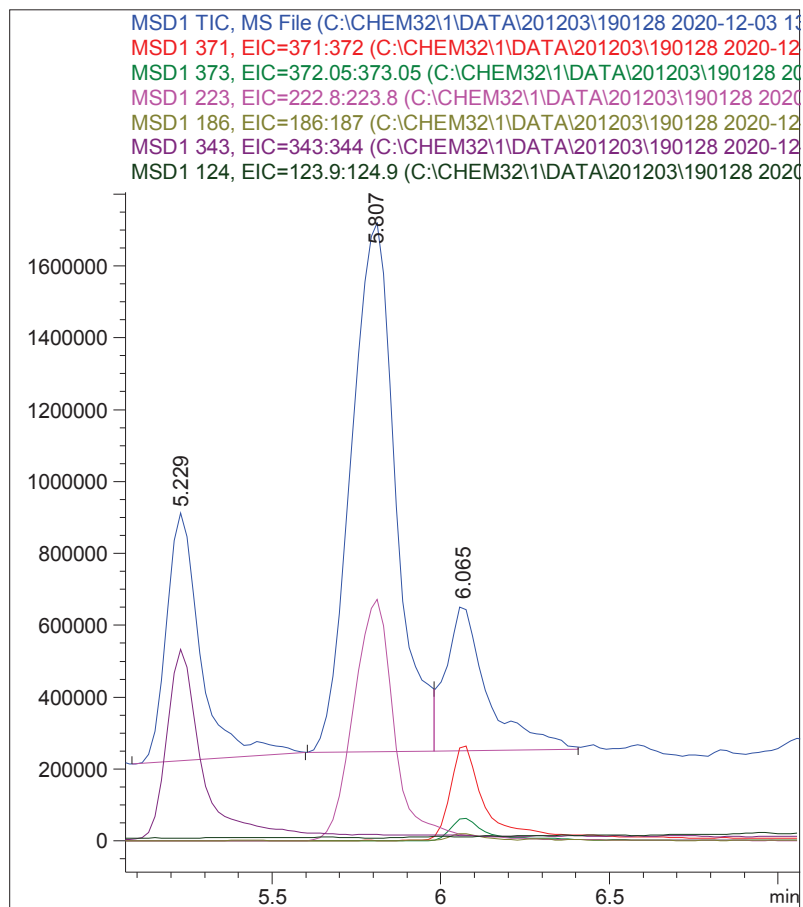
DateTime : 12/04/2020 09:20:06 am

Operator : SYSTEM

Vial : 2

Sample : Test\_Phthalat\_201203

Retention : 6.065 minutes



Sample Name: Test\_Phthalat\_201203

DataPath : C:\CHEM32\1\DATA\201203\190128 2020-12-03 13-34-14\TEST\_PHTHALAT\_201203.D

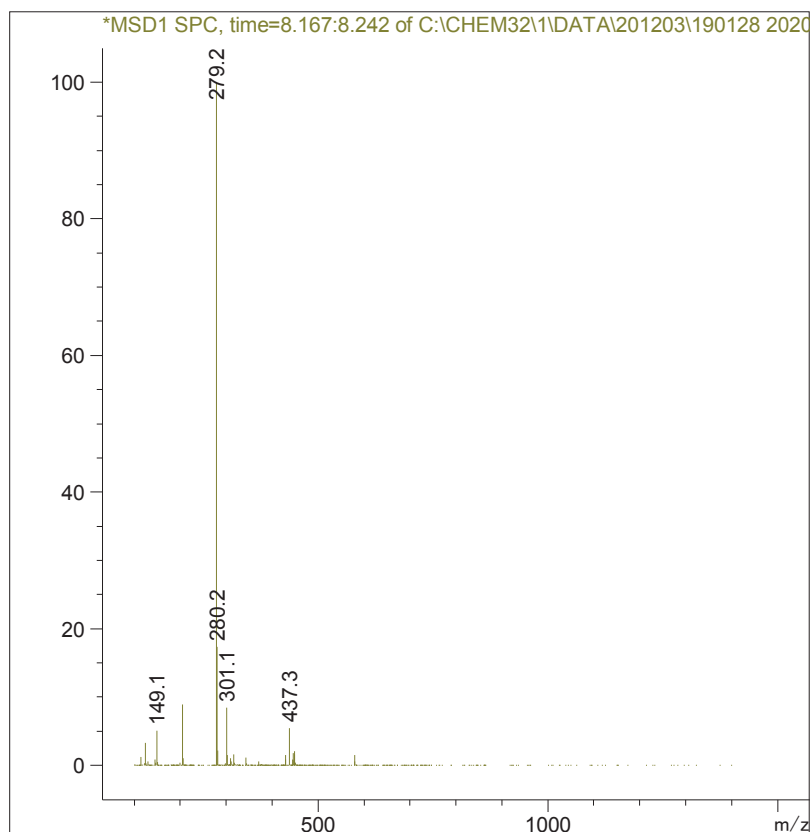
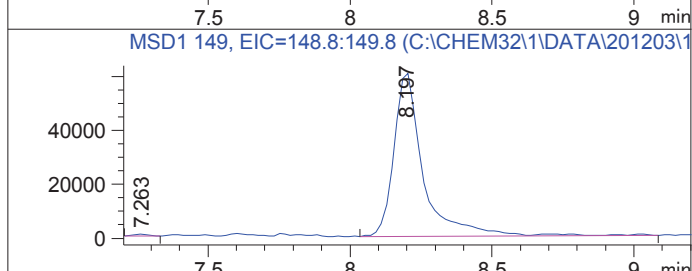
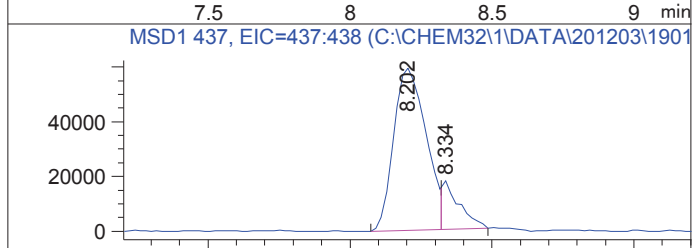
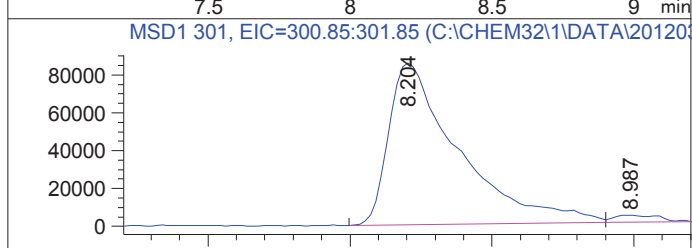
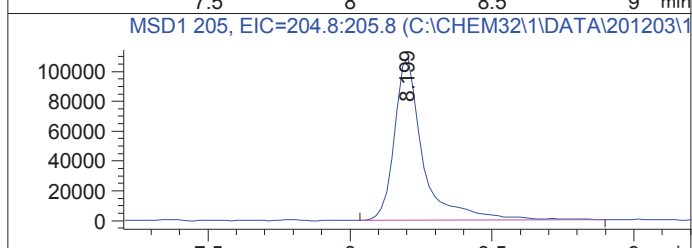
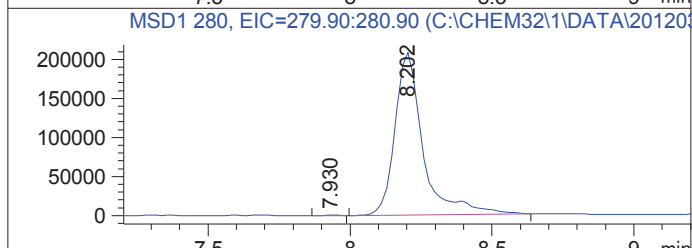
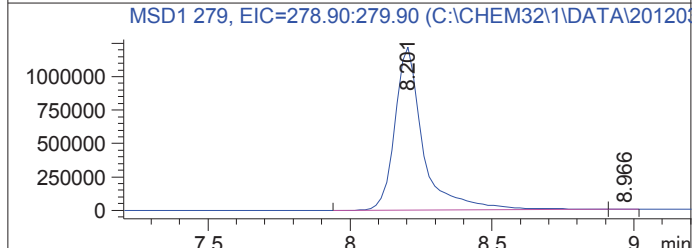
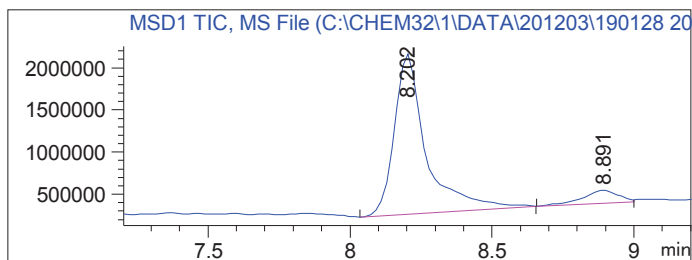
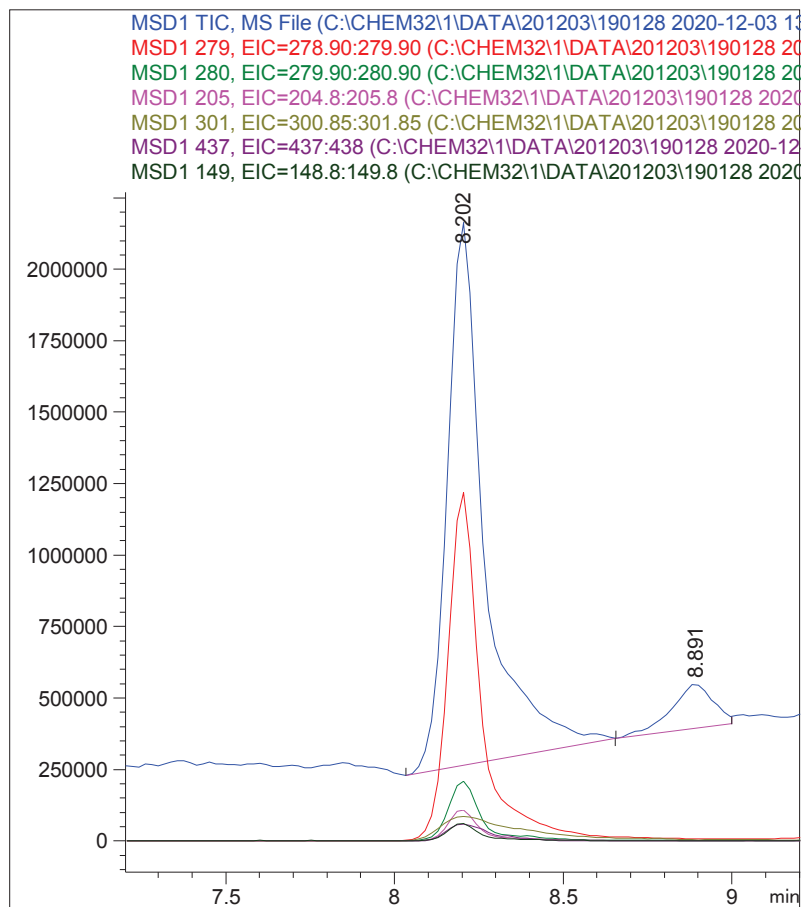
DateTime : 12/04/2020 09:20:06 am

Operator : SYSTEM

Vial : 2

Sample : Test\_Phthalat\_201203

Retention : 8.202 minutes





Sample Name: Test\_Phthalat\_201203

DataPath : C:\CHEM32\1\DATA\201203\190128 2020-12-03 13-34-14\TEST\_PHTHALAT\_201203.D

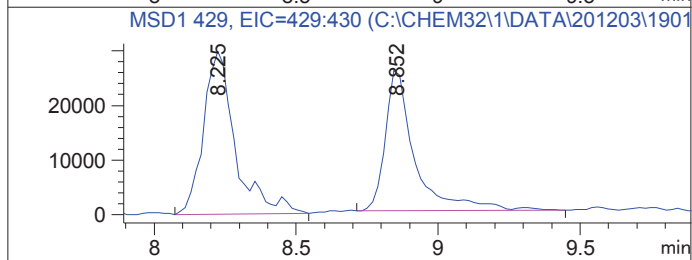
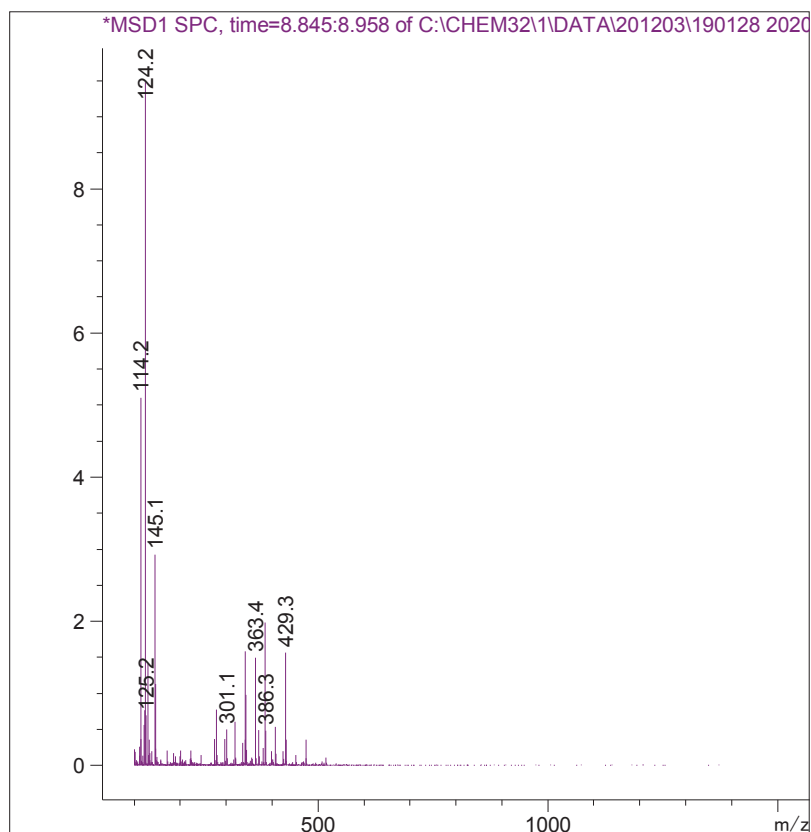
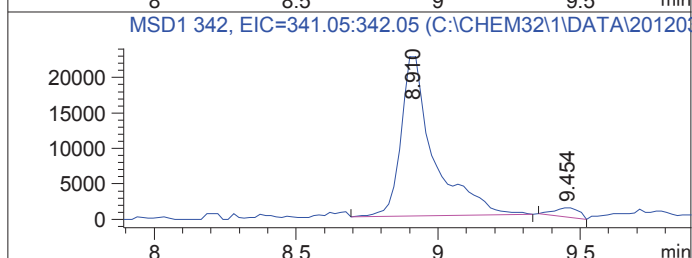
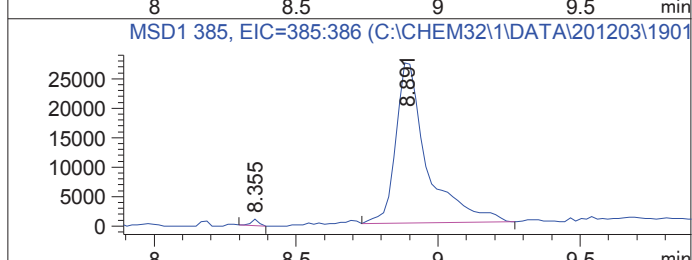
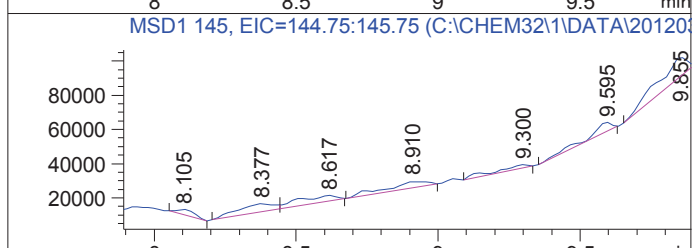
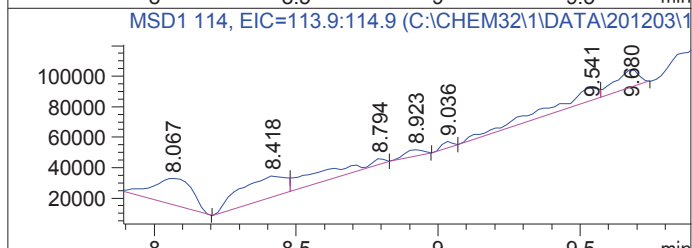
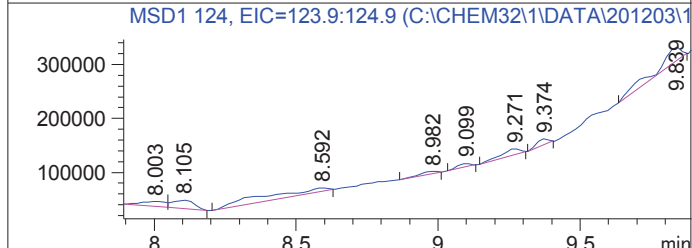
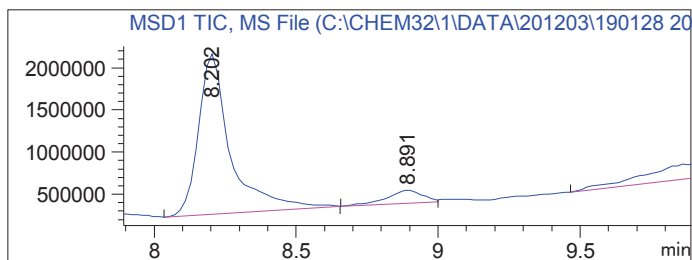
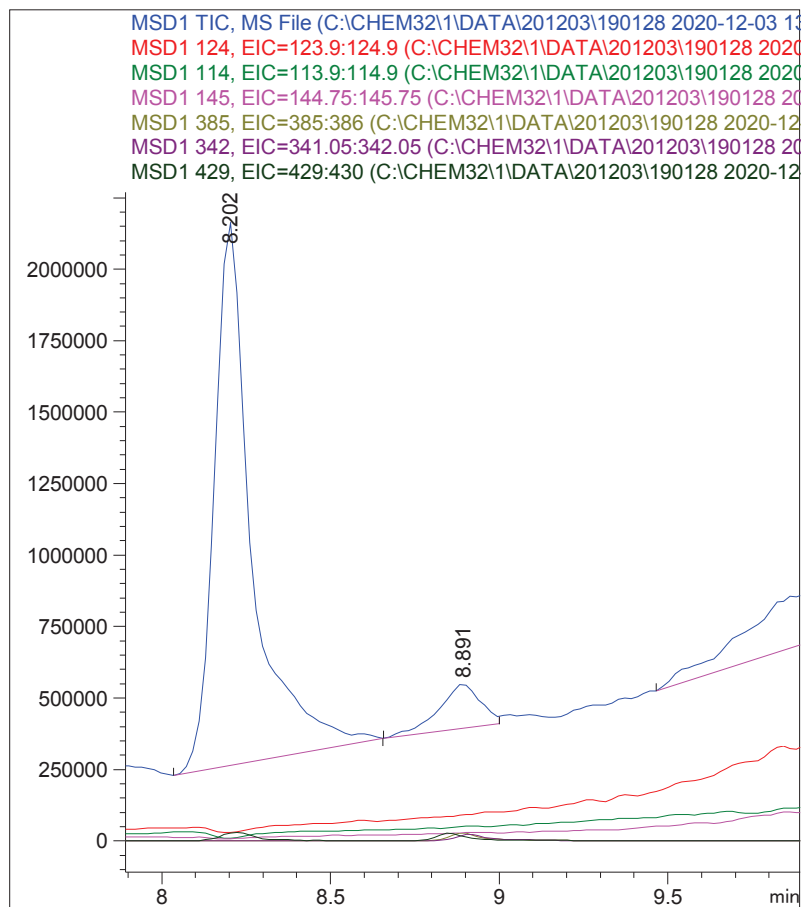
DateTime : 12/04/2020 09:20:07 am

Operator : SYSTEM

Vial : 2

Sample : Test\_Phthalat\_201203

Retention : 8.891 minutes



Sample Name: Test\_Phthalat\_201203

DataPath : C:\CHEM32\1\DATA\201203\190128 2020-12-03 13-34-14\TEST\_PHTHALAT\_201203.D

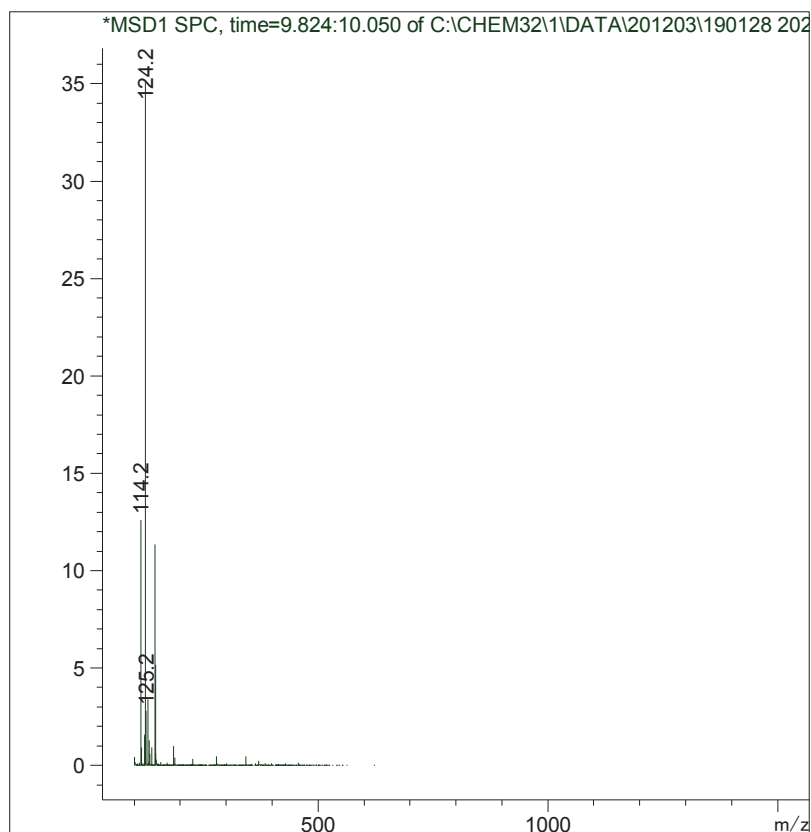
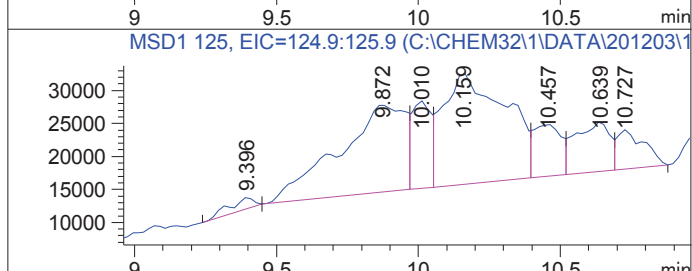
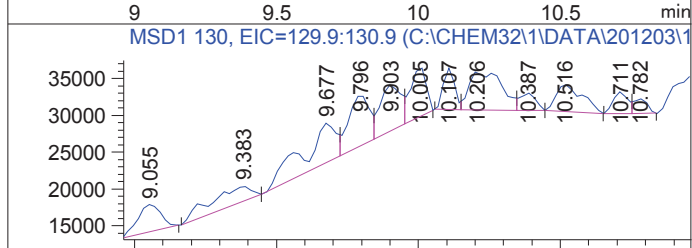
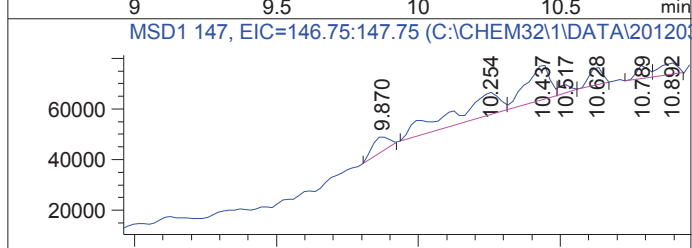
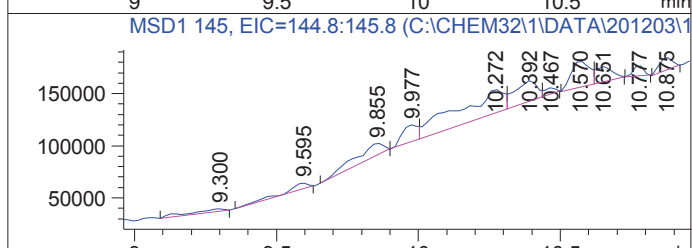
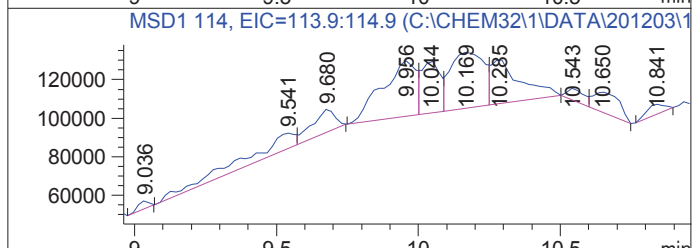
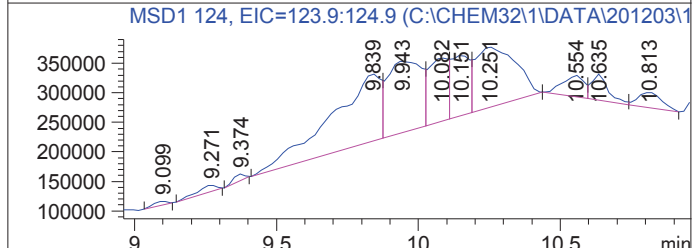
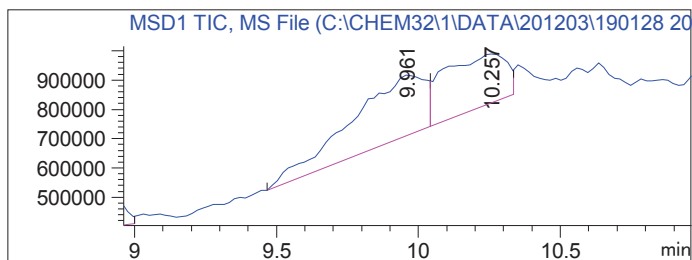
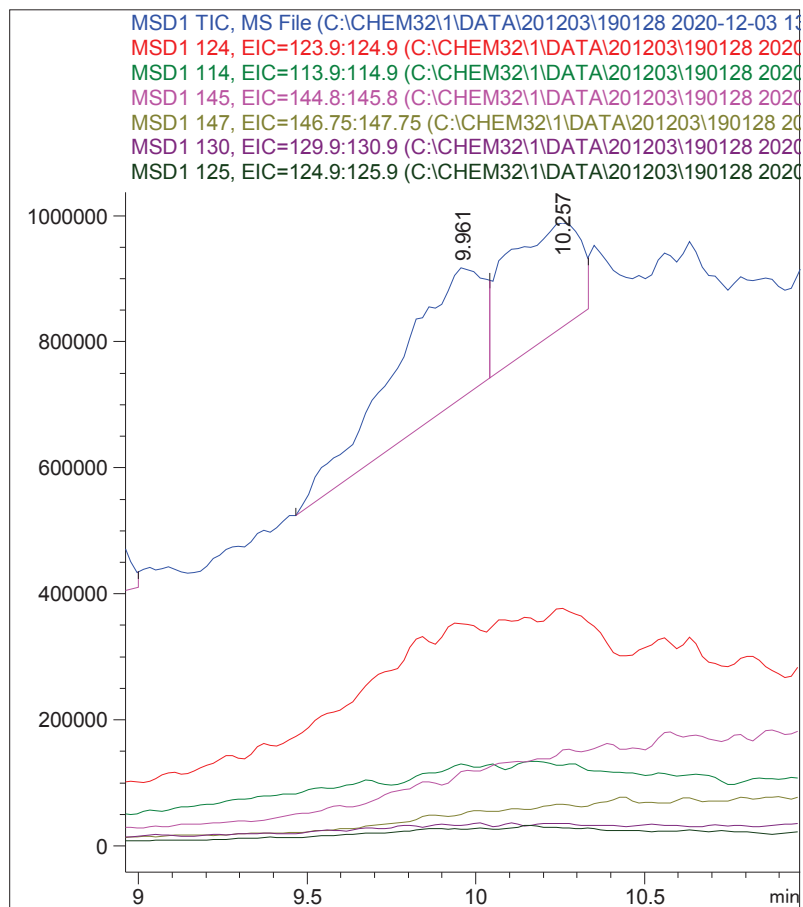
DateTime : 12/04/2020 09:20:07 am

Operator : SYSTEM

Vial : 2

Sample : Test\_Phthalat\_201203

Retention : 9.961 minutes



Sample Name: Test\_Phthalat\_201203

DataPath : C:\CHEM32\1\DATA\201203\190128 2020-12-03 13-34-14\TEST\_PHTHALAT\_201203.D

DateTime : 12/04/2020 09:20:08 am

Operator : SYSTEM

Vial : 2

Sample : Test\_Phthalat\_201203

Retention : 10.257 minutes

