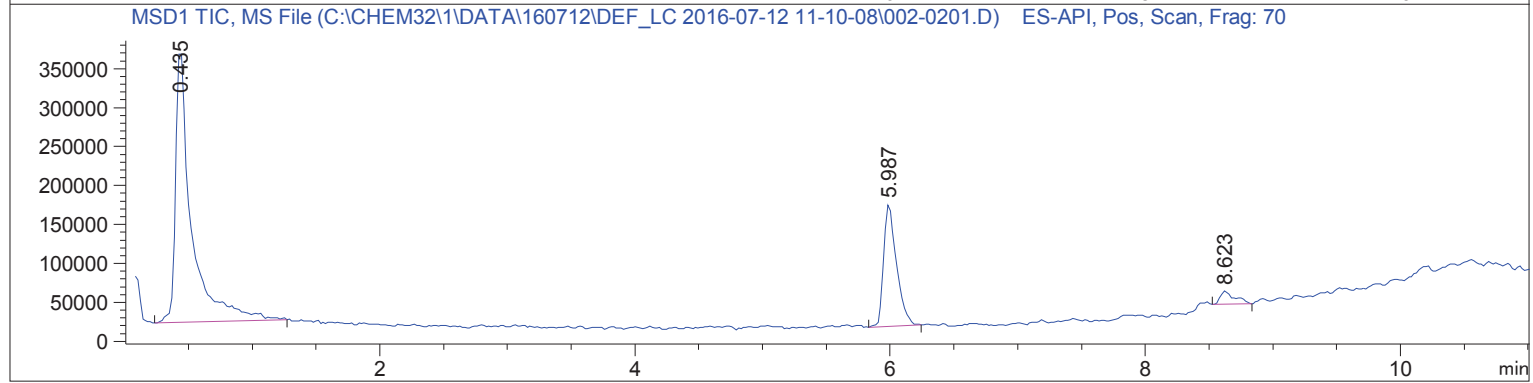
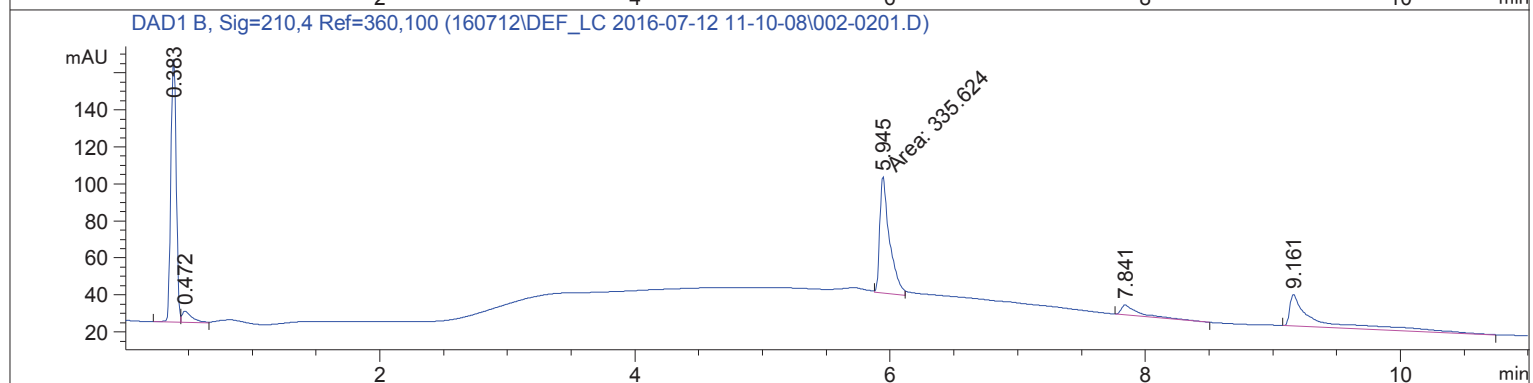
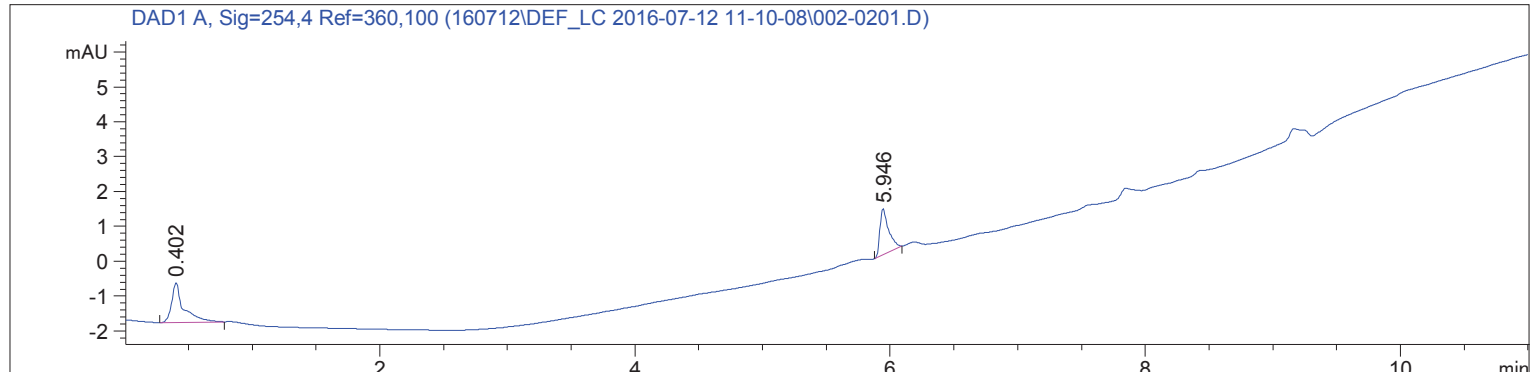


Sample Name: TEST160712

=====

Acq. Operator	: SYSTEM	Seq. Line	: 2
Acq. Instrument	: LCMS 1	Location	: Vial 2
Injection Date	: 7/12/2016 11:28:03 AM	Inj	: 1
		Inj Volume	: 1.000 µl
Acq. Method	: C:\CHEM32\1\DATA\160712\DEF_LC 2016-07-12 11-10-08\STANDARD_210_254NM.M		
Last changed	: 7/12/2016 11:10:08 AM by SYSTEM		
Analysis Method	: C:\CHEM32\1\DATA\160712\DEF_LC 2016-07-12 11-10-08\STANDARD_210_254NM.M (Sequence Method)		
Last changed	: 7/12/2016 1:26:42 PM by SYSTEM (modified after loading)		
Method Info	: Standard ACN:Wasser 20:80 -> 97:3 Flow 0.4 ml/min 254 nm		

Additional Info : Peak(s) manually integrated



=====
Area Percent Report
=====

Sorted By	:	Signal
Multiplier	:	1.0000
Dilution	:	1.0000

Do not use Multiplier & Dilution Factor with ISTDs

Sample Name: TEST160712

Signal 1: DAD1 A, Sig=254,4 Ref=360,100

Peak #	RetTime [min]	Type	Width [min]	Area [mAU*s]	Height [mAU]	Area %
1	0.402	BB	0.0904	7.47883	1.14235	54.2287
2	5.946	BB	0.0700	6.31244	1.31454	45.7713

Totals : 13.79128 2.45689

Signal 2: DAD1 B, Sig=210,4 Ref=360,100

Peak #	RetTime [min]	Type	Width [min]	Area [mAU*s]	Height [mAU]	Area %
1	0.383	BV	0.0462	420.14325	143.53226	38.9502
2	0.472	VV	0.0789	34.36337	6.18169	3.1857
3	5.945	MM	0.0888	335.62387	63.01202	31.1147
4	7.841	BB	0.1261	51.69980	5.47838	4.7929
5	9.161	BBA	0.1784	236.83656	17.01468	21.9564

Totals : 1078.66685 235.21902

Signal 3: MSD1 TIC, MS File

Peak #	RetTime [min]	Type	Width [min]	Area	Height	Area %
1	0.435	BB	0.1232	3.04483e6	3.53184e5	71.3583
2	5.987	BB	0.1036	1.09179e6	1.57230e5	25.5870
3	8.623	BB	0.1174	1.30343e5	1.70638e4	3.0547

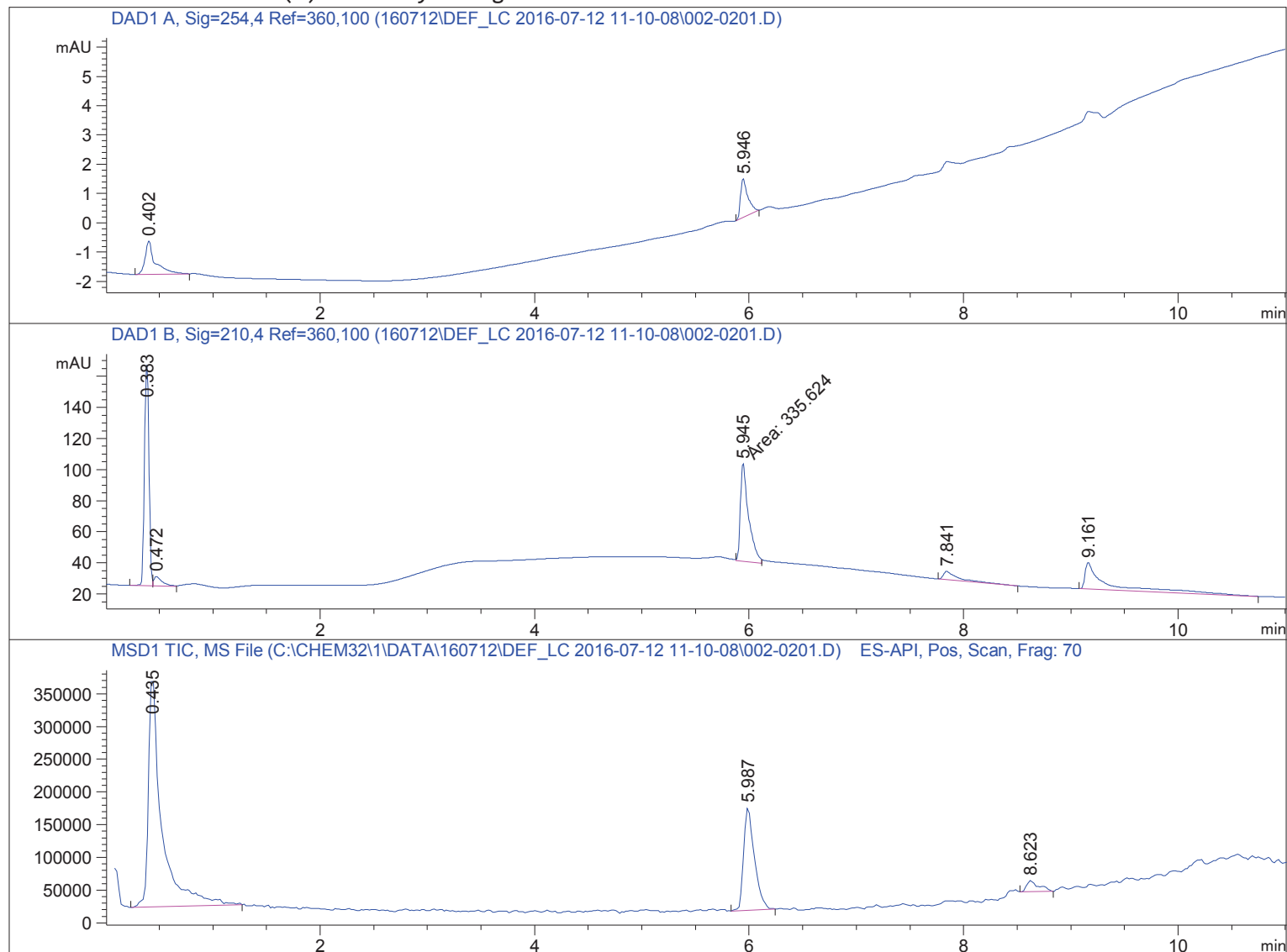
Totals : 4.26696e6 5.27478e5

=====
*** End of Report ***

Sample Name: TEST160712

```
=====
Acq. Operator   : SYSTEM                               Seq. Line :    2
Acq. Instrument : LCMS 1                               Location  : Vial 2
Injection Date  : 7/12/2016 11:28:03 AM              Inj       :    1
                                                    Inj Volume: 1.000 µl
Acq. Method     : C:\CHEM32\1\DATA\160712\DEF_LC 2016-07-12 11-10-08\STANDARD_210_254NM.M
Last changed    : 7/12/2016 11:10:08 AM by SYSTEM
Analysis Method : C:\CHEM32\1\DATA\160712\DEF_LC 2016-07-12 11-10-08\STANDARD_210_254NM.M (
                  Sequence Method)
Last changed    : 7/12/2016 1:27:01 PM by SYSTEM
                  (modified after loading)
Method Info     : Standard ACN:Wasser 20:80 -> 97:3 Flow 0.4 ml/min 254 nm
=====
```

Additional Info : Peak(s) manually integrated



Spectra averaged over upper half of peaks.

Number of ions per peak: 6

Display Time Range(+/- mins): 1.0

Sample Name: TEST160712

DataPath : C:\CHEM32\1\DATA\160712\DEF_LC 2016-07-12 11-10-08\002-0201.D

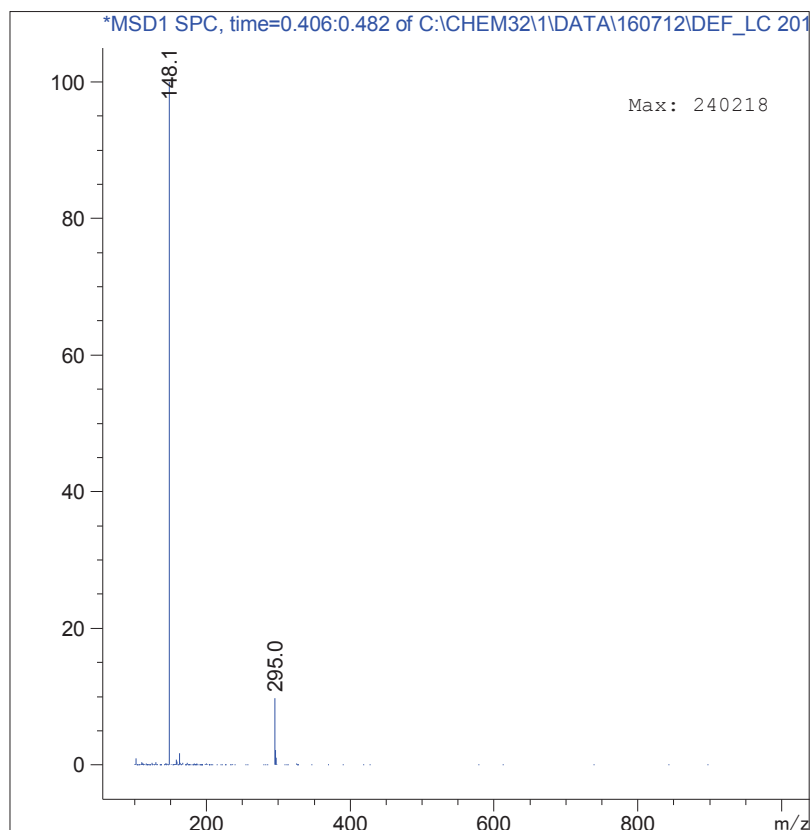
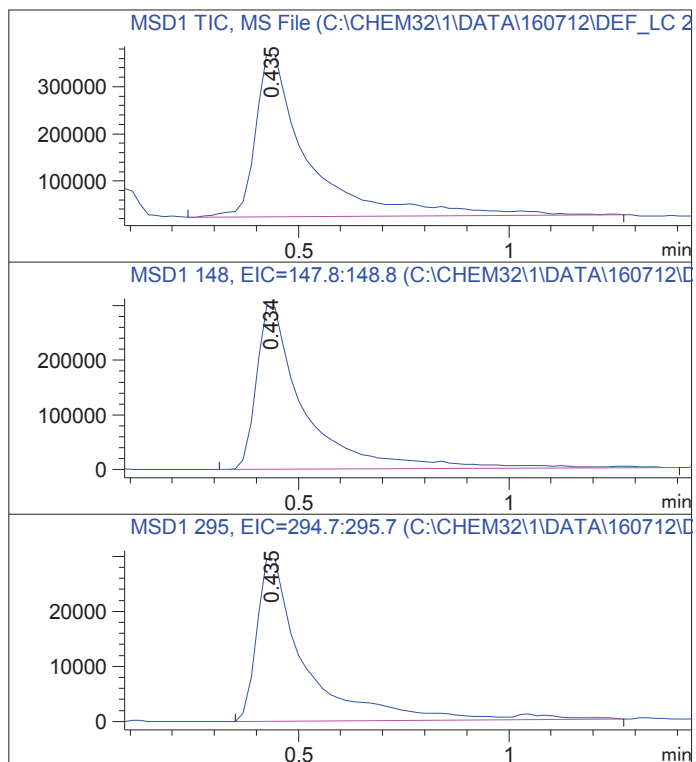
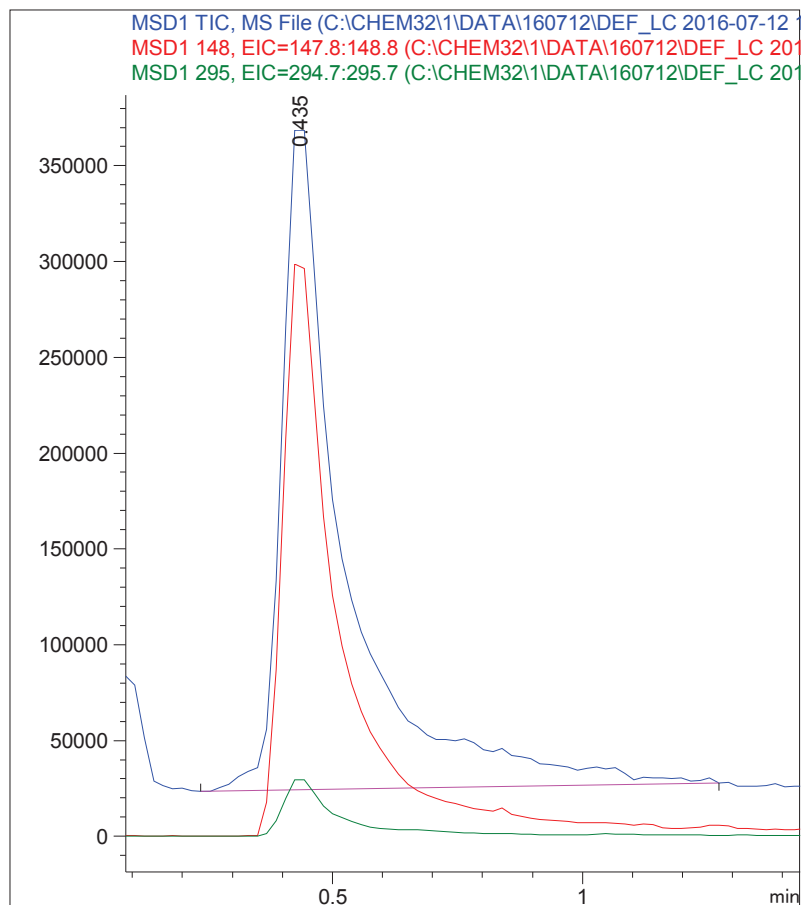
DateTime: 12 Jul 16 11:28 am +0100

Operator : SYSTEM

Vial : 2

Sample : TEST160712

Retention : 0.435 minutes



Sample Name: TEST160712

DataPath : C:\CHEM32\1\DATA\160712\DEF_LC 2016-07-12 11-10-08\002-0201.D

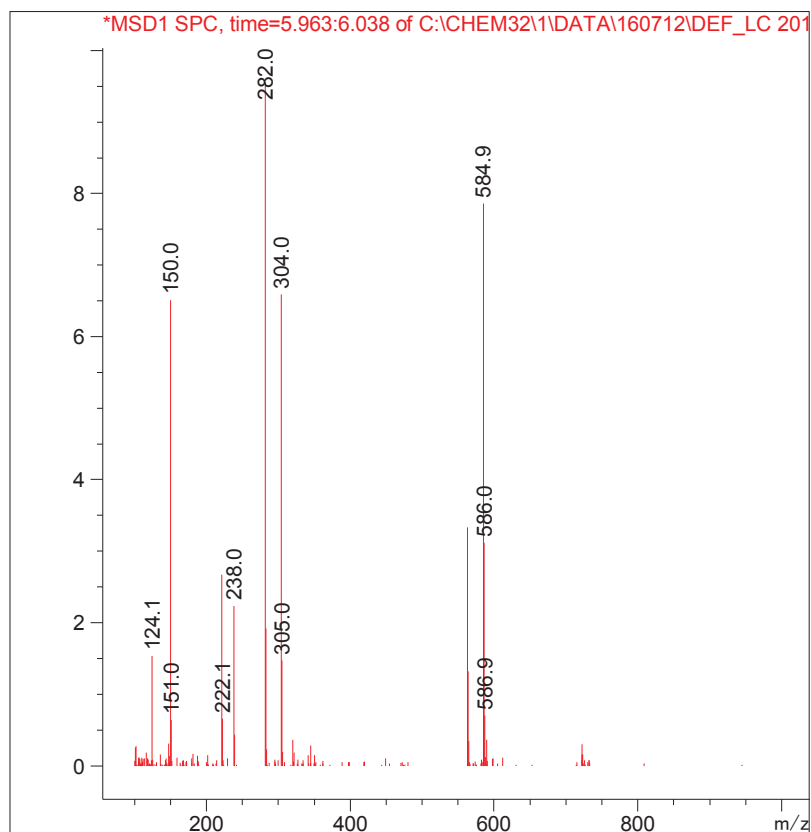
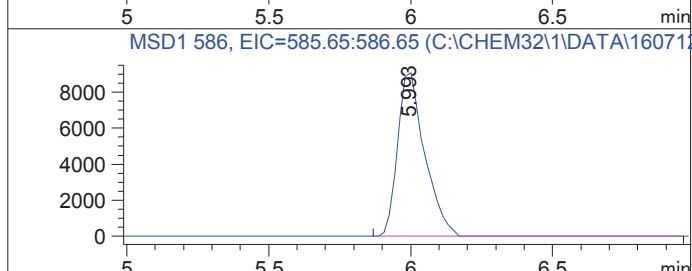
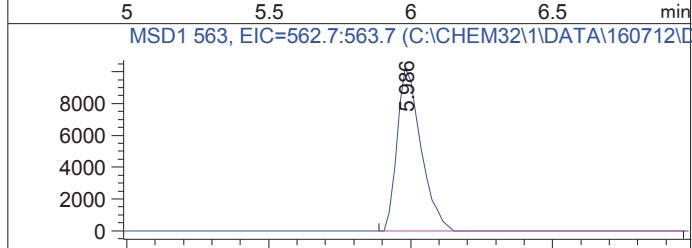
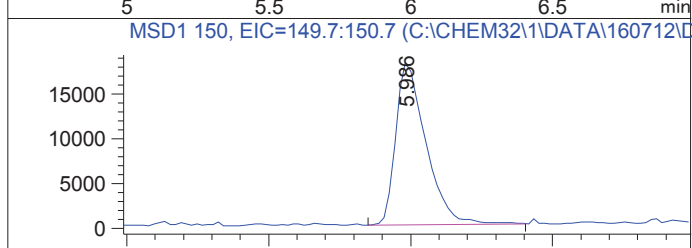
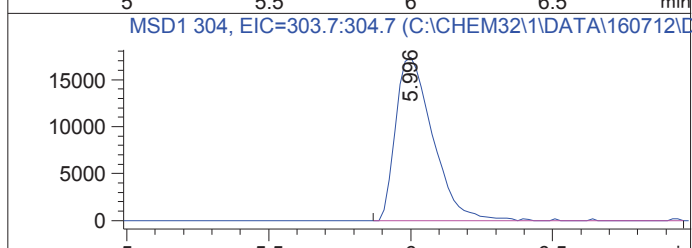
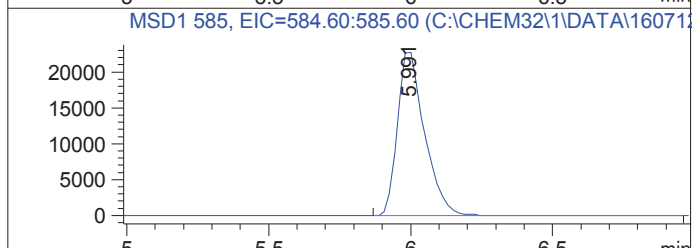
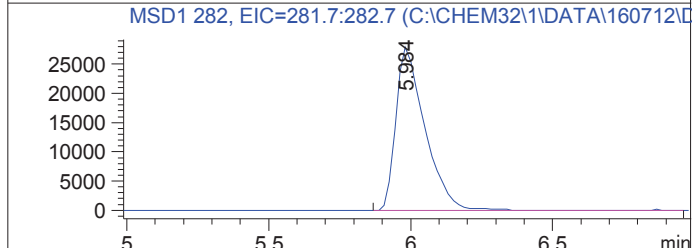
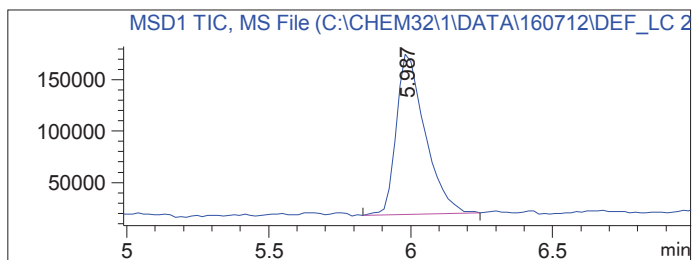
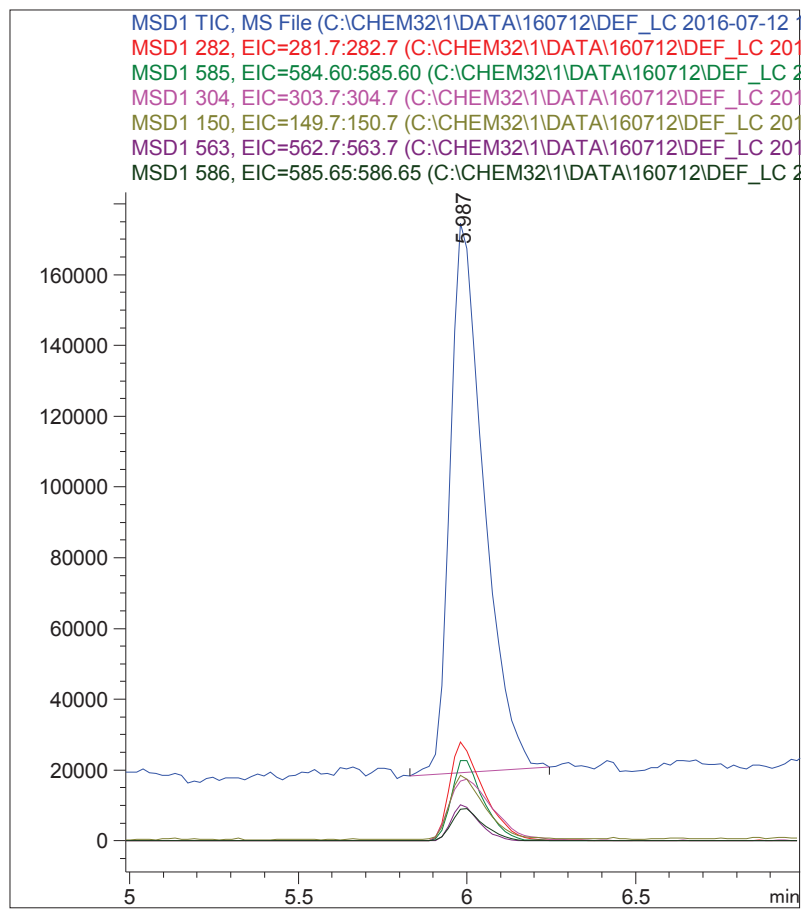
DateTime: 12 Jul 16 11:28 am +0100

Operator : SYSTEM

Vial : 2

Sample : TEST160712

Retention : 5.987 minutes



Sample Name: TEST160712

DataPath : C:\CHEM32\1\DATA\160712\DEF_LC 2016-07-12 11-10-08\002-0201.D

DateTime: 12 Jul 16 11:28 am +0100

Operator : SYSTEM

Vial : 2

Sample : TEST160712

Retention : 8.623 minutes

