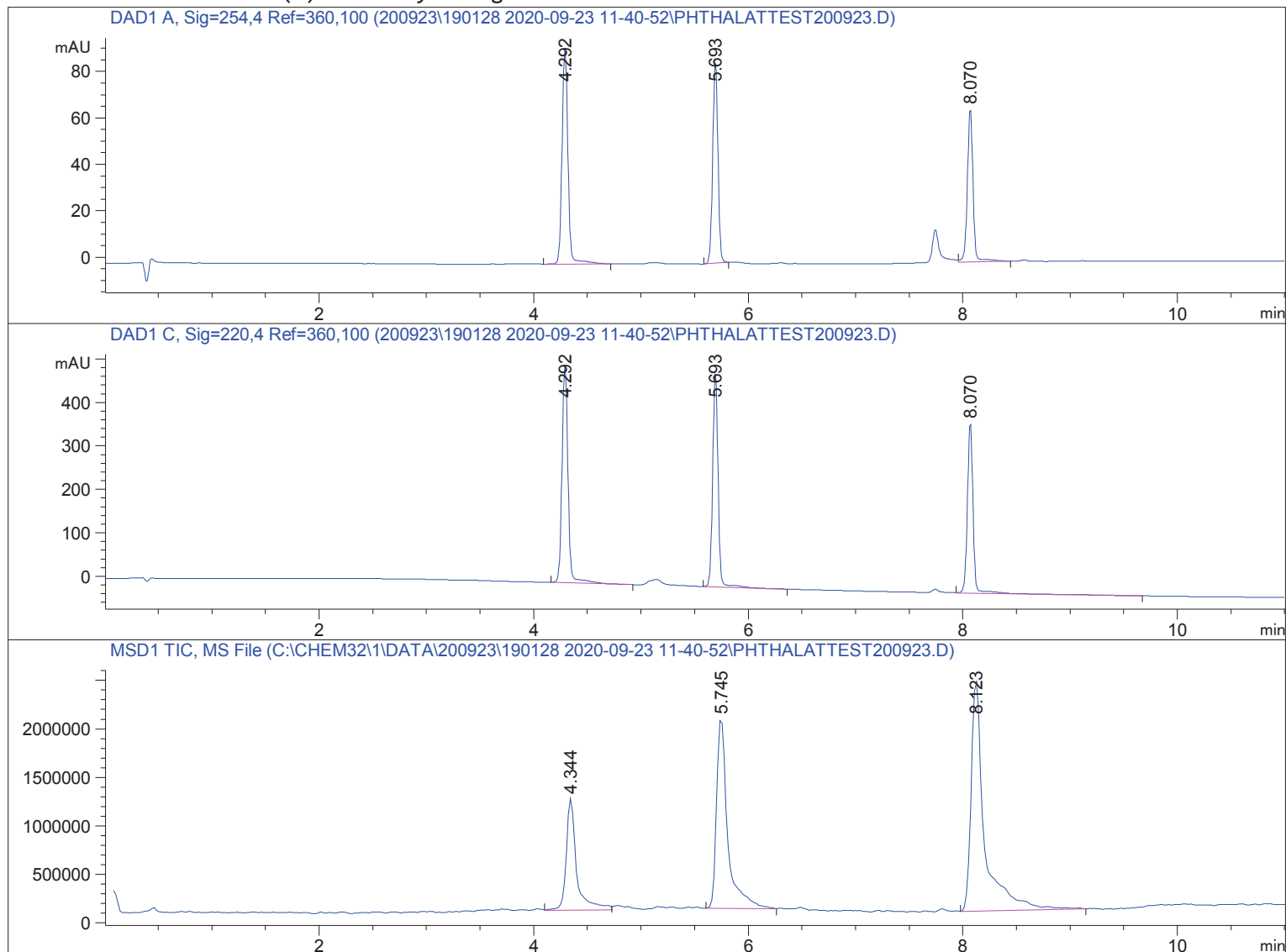


Sample Name: Phthalattest200923

```
=====
Acq. Operator   : SYSTEM                      Seq. Line :    2
Acq. Instrument : LCMS 1                    Location  : Vial 2
Injection Date  : 9/23/2020 11:57:47 AM      Inj       :    1
                                           Inj Volume: 1.000 µl
Acq. Method     : C:\CHEM32\1\DATA\200923\190128 2020-09-23 11-40-52\STANDARD_220_254_NH4AC.M
Last changed    : 9/23/2020 11:40:52 AM by SYSTEM
Analysis Method : C:\CHEM32\1\DATA\200923\190128 2020-09-23 11-40-52\STANDARD_220_254_NH4AC.M
                  (Sequence Method)
Last changed    : 9/23/2020 12:28:09 PM by SYSTEM
                  (modified after loading)
Method Info     : Standard ACN:Wasser 20:80 -> 97:3 Flow 0.4 ml/min 220 nm, 254 nm
=====
```

Additional Info : Peak(s) manually integrated



```
=====
                          Area Percent Report
=====
```

```
Sorted By      :      Signal
Multiplier     :      1.0000
Dilution       :      1.0000
Do not use Multiplier & Dilution Factor with ISTDs
```

Sample Name: Phthalattest200923

Signal 1: DAD1 A, Sig=254,4 Ref=360,100

Peak #	RetTime [min]	Type	Width [min]	Area [mAU*s]	Height [mAU]	Area %
1	4.292	BB	0.0592	358.51901	92.54030	40.0954
2	5.693	BB	0.0536	292.11774	86.14912	32.6693
3	8.070	VB	0.0573	243.52788	65.68203	27.2352

Totals : 894.16463 244.37144

Signal 2: DAD1 C, Sig=220,4 Ref=360,100

Peak #	RetTime [min]	Type	Width [min]	Area [mAU*s]	Height [mAU]	Area %
1	4.292	BB	0.0596	1952.84155	499.76144	37.9911
2	5.693	VB	0.0556	1740.17395	488.22418	33.8538
3	8.070	VB	0.0573	1447.24817	390.27225	28.1551

Totals : 5140.26367 1378.25787

Signal 3: MSD1 TIC, MS File

Peak #	RetTime [min]	Type	Width [min]	Area	Height	Area %
1	4.344	VV	0.0954	7.74340e6	1.15122e6	18.1684
2	5.745	BV	0.1058	1.41117e7	1.97911e6	33.1102
3	8.123	BB	0.1243	2.07652e7	2.38106e6	48.7214

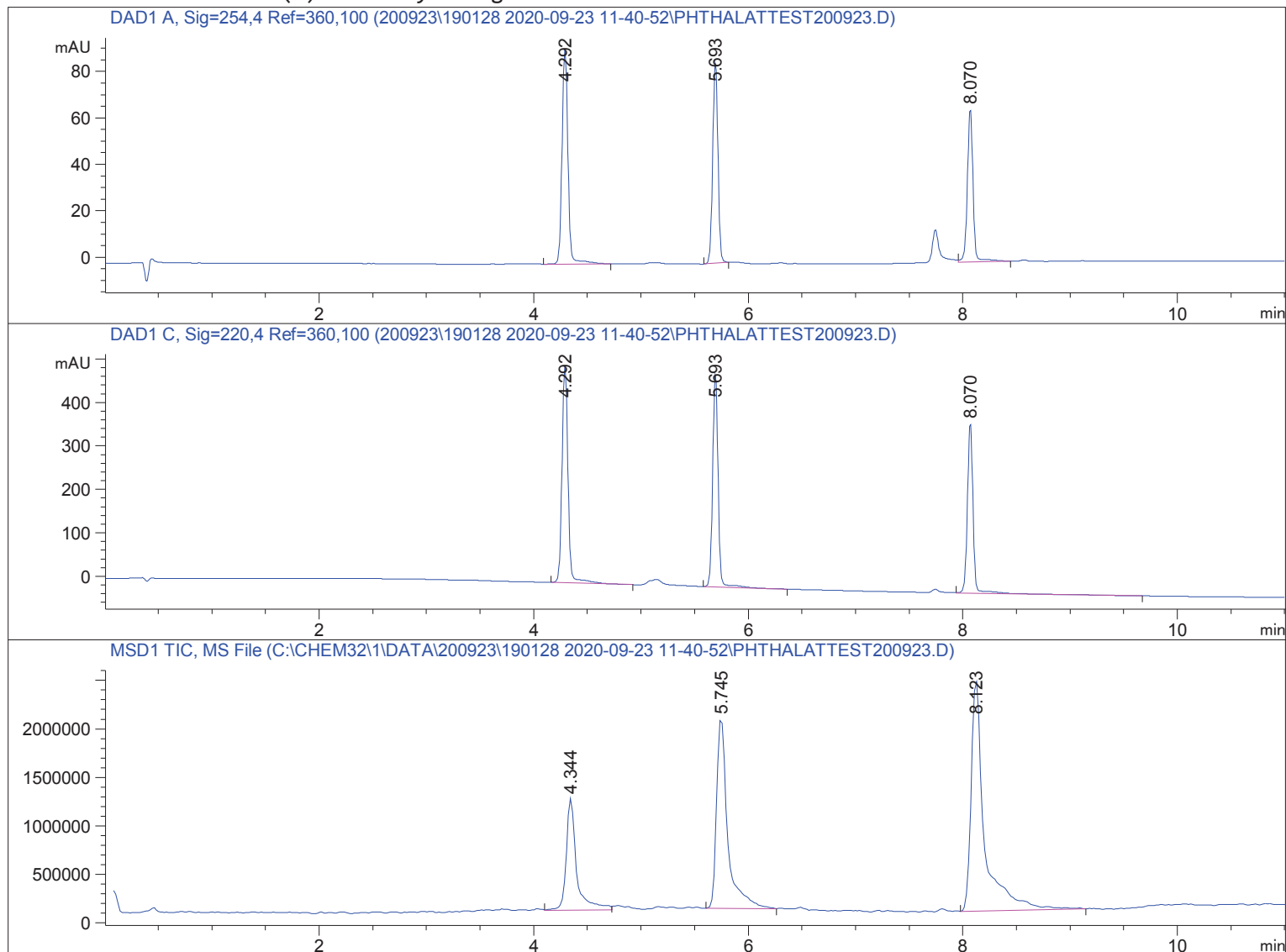
Totals : 4.26203e7 5.51139e6

=====
*** End of Report ***

Sample Name: Phthalattest200923

```
=====
Acq. Operator   : SYSTEM                      Seq. Line :    2
Acq. Instrument : LCMS 1                     Location  : Vial 2
Injection Date  : 9/23/2020 11:57:47 AM      Inj       :    1
                                           Inj Volume: 1.000 µl
Acq. Method     : C:\CHEM32\1\DATA\200923\190128 2020-09-23 11-40-52\STANDARD_220_254_NH4AC.M
Last changed    : 9/23/2020 11:40:52 AM by SYSTEM
Analysis Method : C:\CHEM32\1\DATA\200923\190128 2020-09-23 11-40-52\STANDARD_220_254_NH4AC.M
                  (Sequence Method)
Last changed    : 9/23/2020 12:28:31 PM by SYSTEM
                  (modified after loading)
Method Info     : Standard ACN:Wasser 20:80 -> 97:3 Flow 0.4 ml/min 220 nm, 254 nm
=====
```

Additional Info : Peak(s) manually integrated



Spectra averaged over upper half of peaks.

Number of ions per peak: 6

Display Time Range(+/- mins): 1.0

Sample Name: Phthalattest200923

DataPath : C:\CHEM32\1\DATA\200923\190128 2020-09-23 11-40-52\PHTHALATTEST200923.D

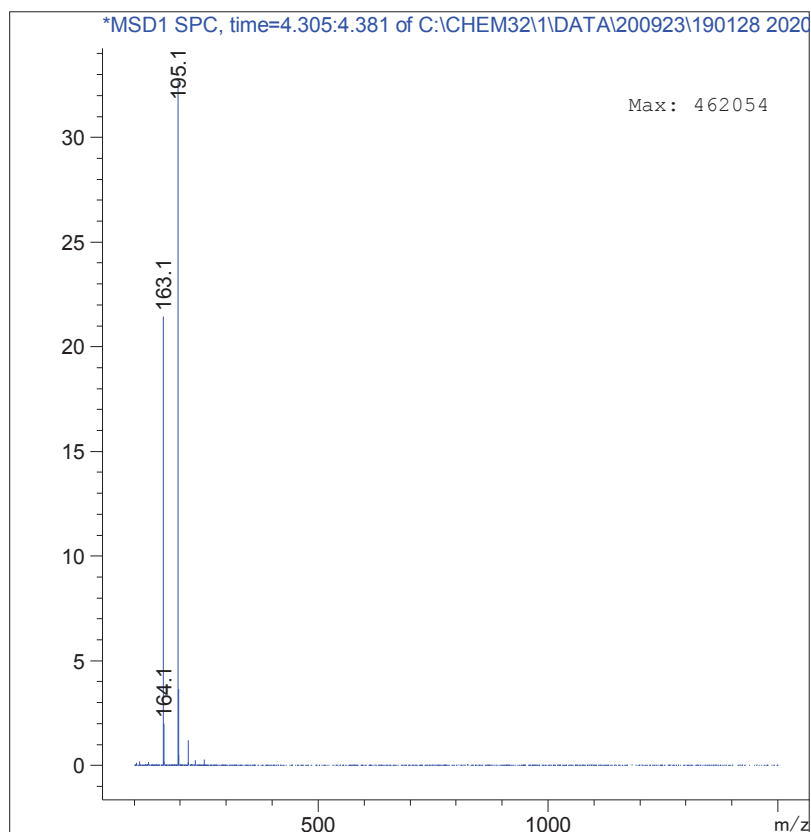
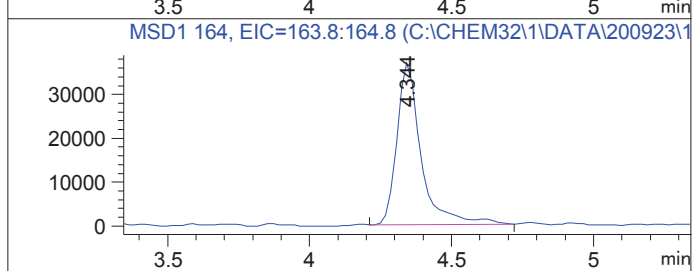
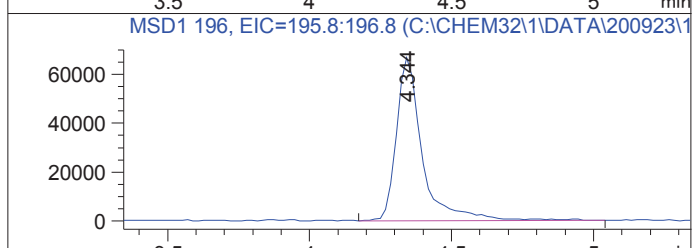
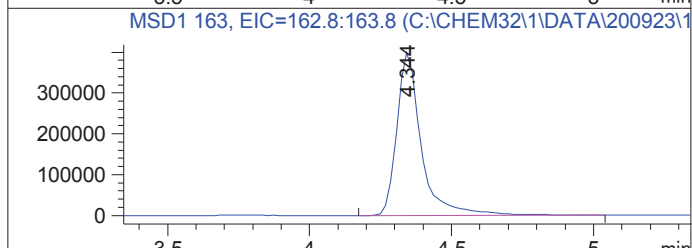
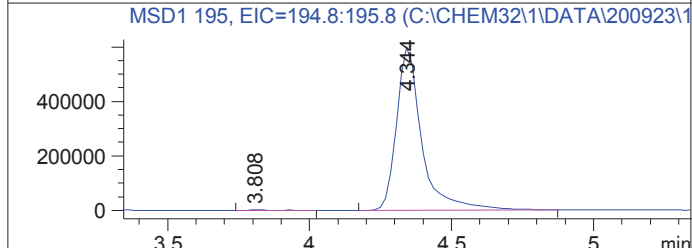
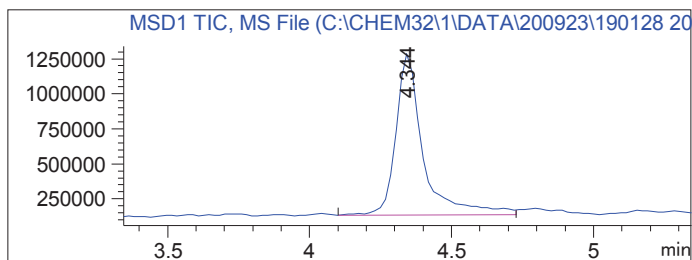
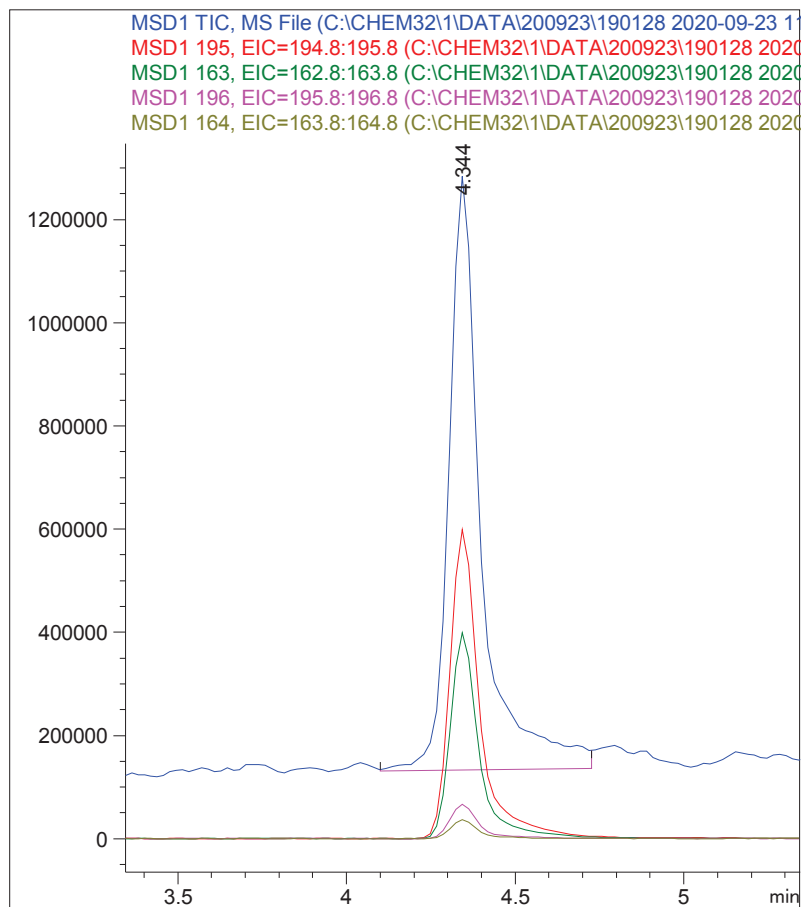
DateTime: 23 Sep 20 11:57 am +0100

Operator : SYSTEM

Vial : 2

Sample : Phthalattest200923

Retention : 4.344 minutes



Sample Name: Phthalattest200923

DataPath : C:\CHEM32\1\DATA\200923\190128 2020-09-23 11-40-52\PTHALATTEST200923.D

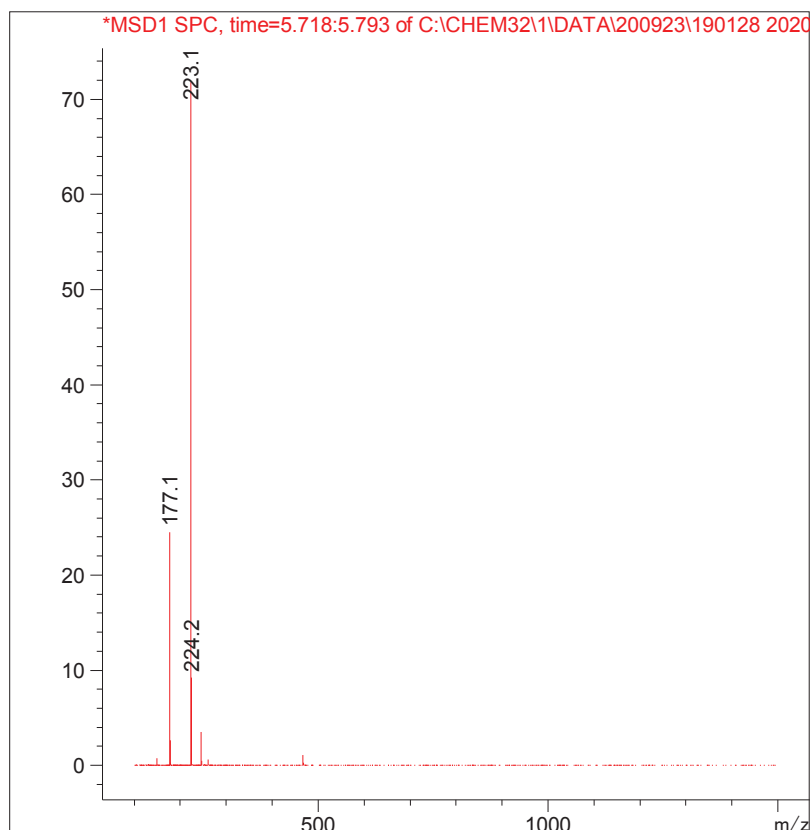
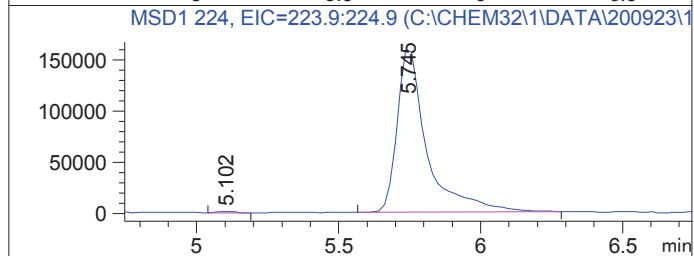
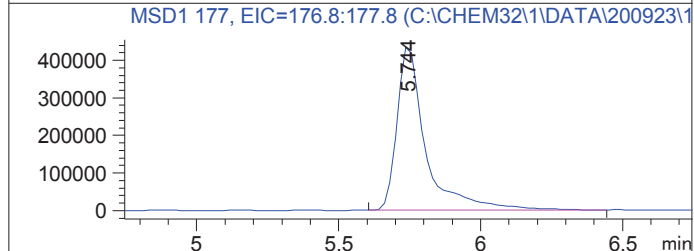
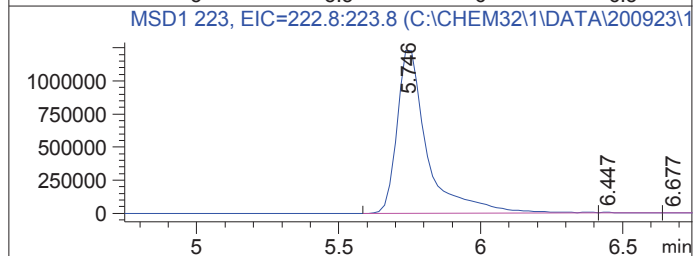
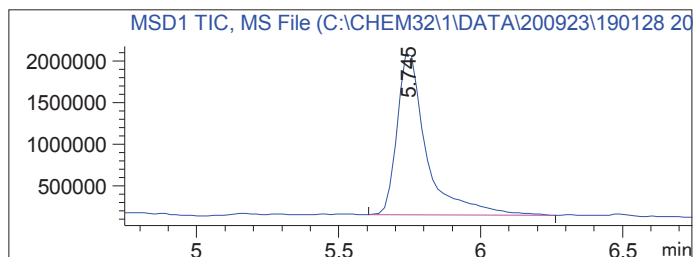
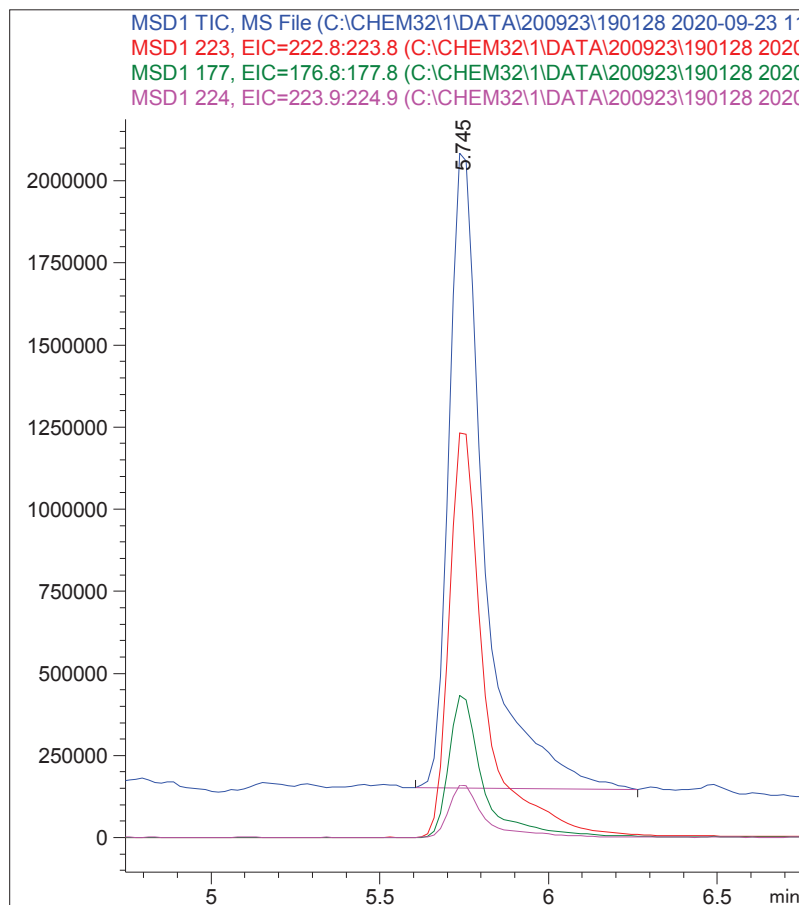
DateTime: 23 Sep 20 11:57 am +0100

Operator : SYSTEM

Vial : 2

Sample : Phthalattest200923

Retention : 5.745 minutes



Sample Name: Phthalattest200923

DataPath : C:\CHEM32\1\DATA\200923\190128 2020-09-23 11-40-52\PHTHALATTEST200923.D

DateTime: 23 Sep 20 11:57 am +0100

Operator : SYSTEM

Vial : 2

Sample : Phthalattest200923

Retention : 8.123 minutes

