

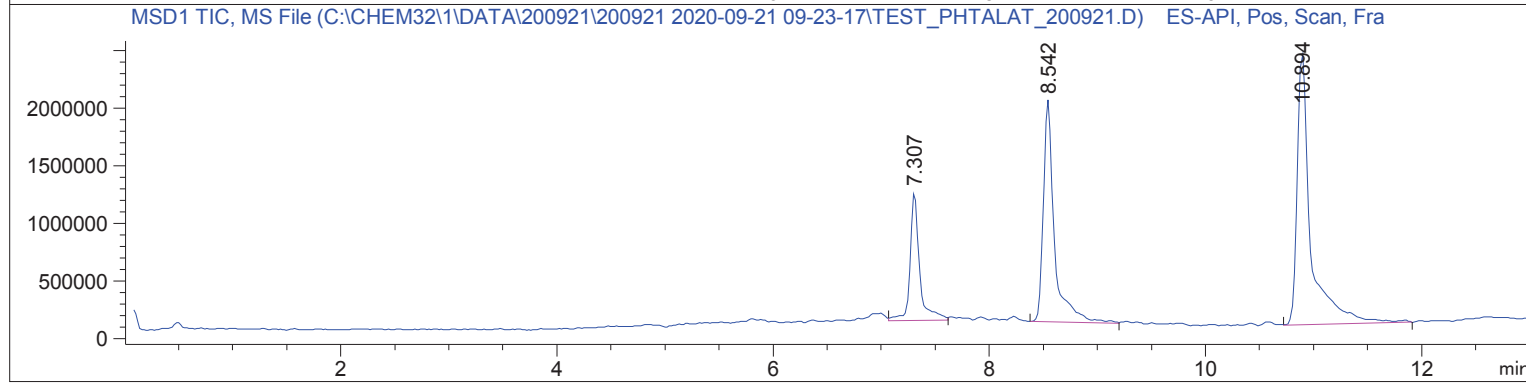
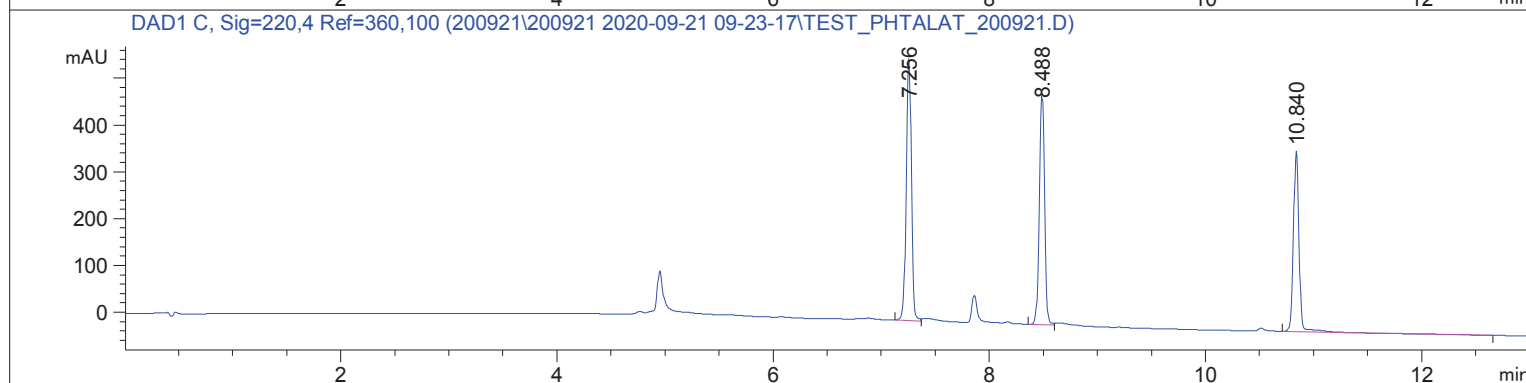
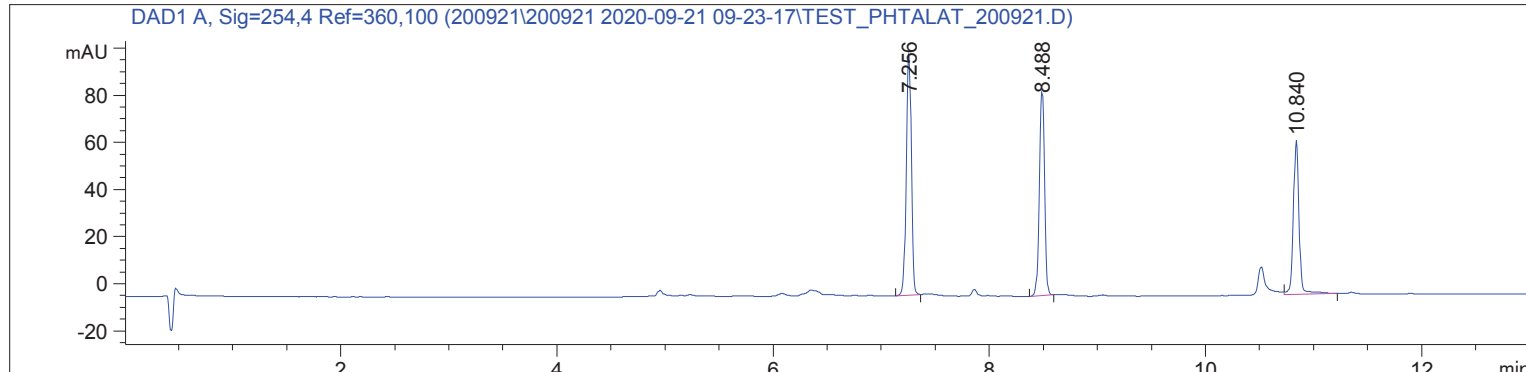
Sample Name: Test\_Phtalat\_200921

=====

Acq. Operator	: SYSTEM	Seq. Line	: 2
Acq. Instrument	: LCMS 1	Location	: Vial 2
Injection Date	: 9/21/2020 10:16:57 AM	Inj	: 1
		Inj Volume	: 1.000 µl

Acq. Method : C:\CHEM32\1\DATA\200921\200921 2020-09-21 09-23-17\POLAR\_220\_254\_NH4AC.NM.M  
Last changed : 9/21/2020 9:23:17 AM by SYSTEM  
Analysis Method : C:\CHEM32\1\DATA\200921\200921 2020-09-21 09-23-17\POLAR\_220\_254\_NH4AC.NM.M  
(Sequence Method)  
Last changed : 9/23/2020 11:26:22 AM by SYSTEM  
(modified after loading)  
Method Info : Standard ACN:Wasser 5:95 -> 97:3 Flow 0.4 ml/min 220 nm

Additional Info : Peak(s) manually integrated



=====  
Area Percent Report  
=====

Sorted By : Signal  
Multiplier : 1.0000  
Dilution : 1.0000  
Do not use Multiplier & Dilution Factor with ISTDs

Sample Name: Test\_Phtalat\_200921

Signal 1: DAD1 A, Sig=254,4 Ref=360,100

Peak #	RetTime [min]	Type	Width [min]	Area [mAU*s]	Height [mAU]	Area %
1	7.256	BB	0.0502	337.33582	102.93739	38.7792
2	8.488	BB	0.0530	289.59061	86.57141	33.2905
3	10.840	VB	0.0574	242.96303	65.34769	27.9303

Totals : 869.88945 254.85649

Signal 2: DAD1 C, Sig=220,4 Ref=360,100

Peak #	RetTime [min]	Type	Width [min]	Area [mAU*s]	Height [mAU]	Area %
1	7.256	BV	0.0508	1867.93506	561.08582	37.6934
2	8.488	BV	0.0537	1663.15344	489.04913	33.5610
3	10.840	VBA	0.0570	1424.52002	386.60565	28.7456

Totals : 4955.60852 1436.74060

Signal 3: MSD1 TIC, MS File

Peak #	RetTime [min]	Type	Width [min]	Area	Height	Area %
1	7.307	VV	0.0945	6.87288e6	1.11485e6	16.6232
2	8.542	BV	0.1062	1.38077e7	1.92674e6	33.3962
3	10.894	VB	0.1249	2.06645e7	2.35737e6	49.9805

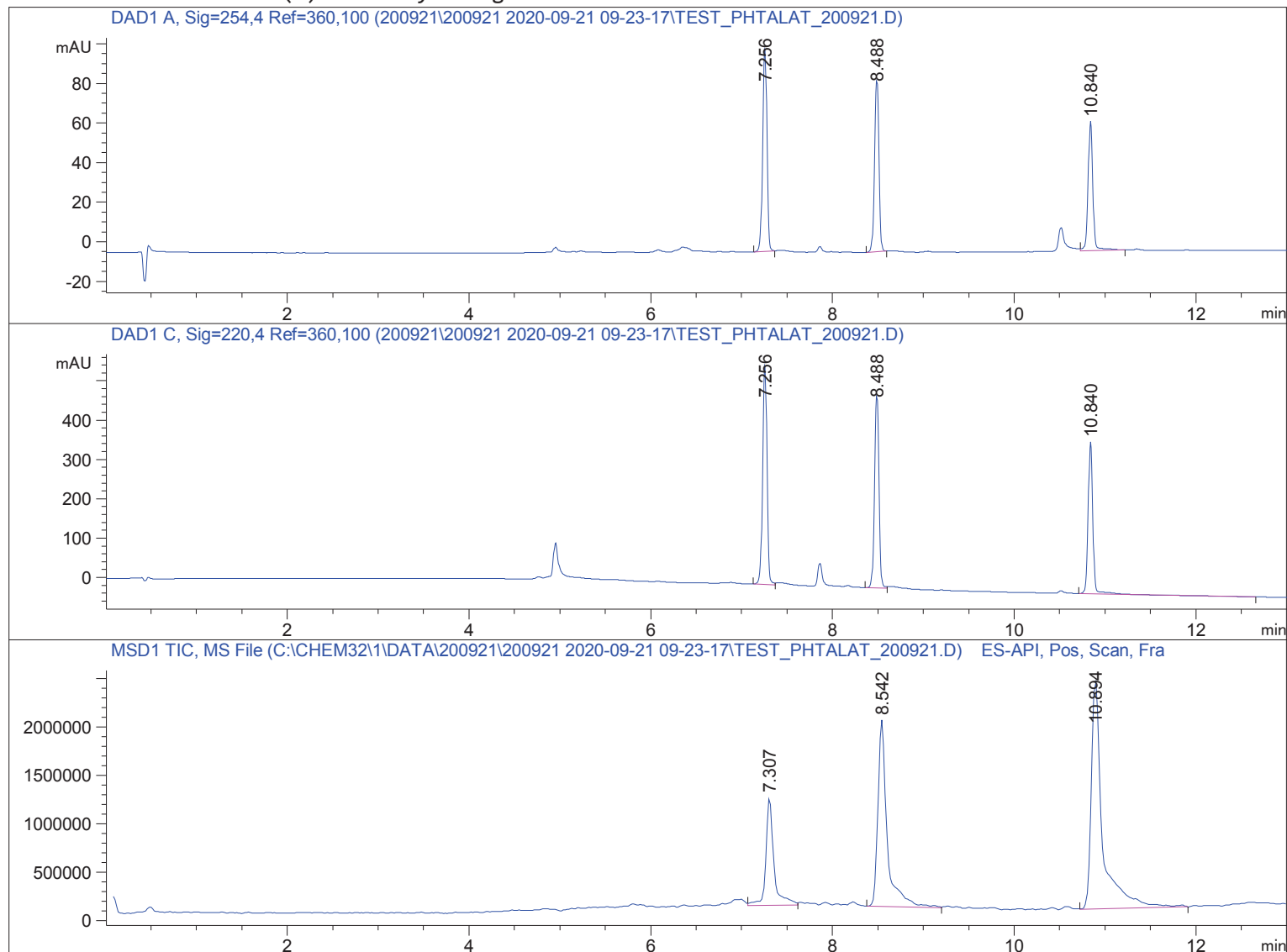
Totals : 4.13451e7 5.39896e6

=====  
\*\*\* End of Report \*\*\*

Sample Name: Test\_Phtalat\_200921

```
=====
Acq. Operator   : SYSTEM                               Seq. Line :    2
Acq. Instrument : LCMS 1                               Location  : Vial 2
Injection Date  : 9/21/2020 10:16:57 AM              Inj       :    1
                                                    Inj Volume: 1.000 µl
Acq. Method     : C:\CHEM32\1\DATA\200921\200921 2020-09-21 09-23-17\POLAR_220_254_NH4AC.NM.M
Last changed    : 9/21/2020 9:23:17 AM by SYSTEM
Analysis Method : C:\CHEM32\1\DATA\200921\200921 2020-09-21 09-23-17\POLAR_220_254_NH4AC.NM.M
                  (Sequence Method)
Last changed    : 9/23/2020 11:26:44 AM by SYSTEM
                  (modified after loading)
Method Info     : Standard ACN:Wasser 5:95 -> 97:3 Flow 0.4 ml/min 220 nm
```

Additional Info : Peak(s) manually integrated



Spectra averaged over upper half of peaks.

Number of ions per peak: 6

Display Time Range(+/- mins): 1.0

Sample Name: Test\_Phtalat\_200921

DataPath : C:\CHEM32\1\DATA\200921\200921 2020-09-21 09-23-17\TEST\_PHTALAT\_200921.D

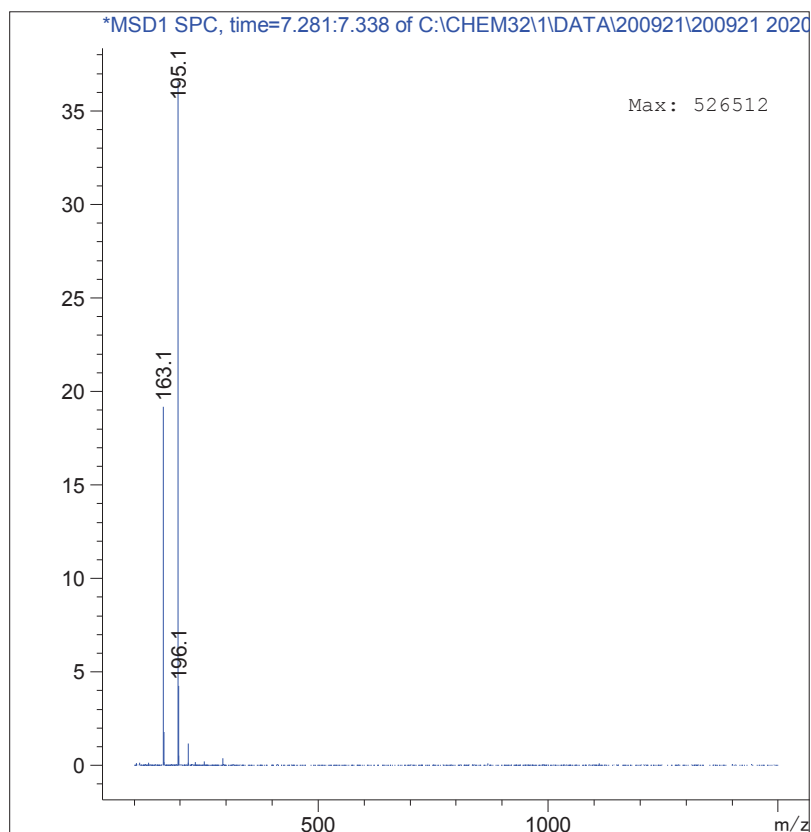
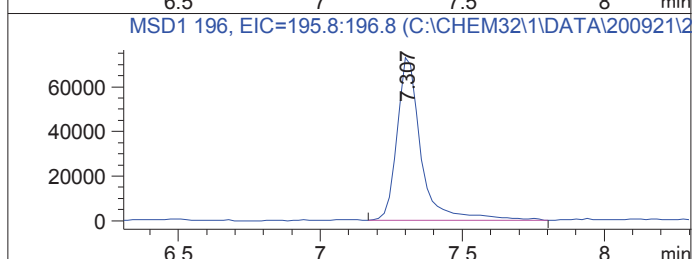
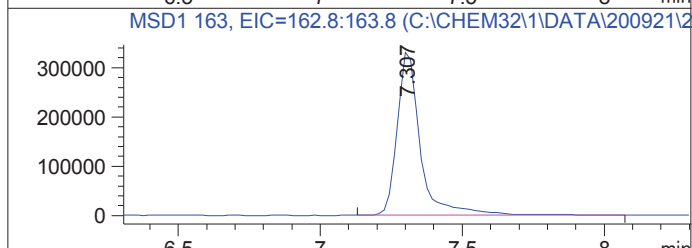
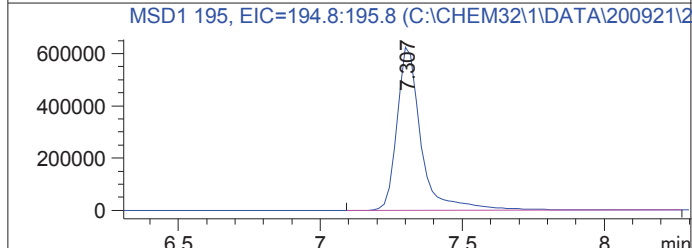
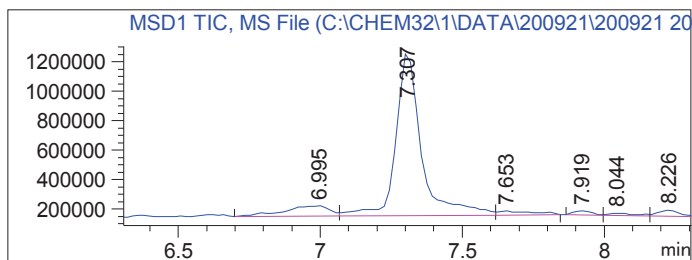
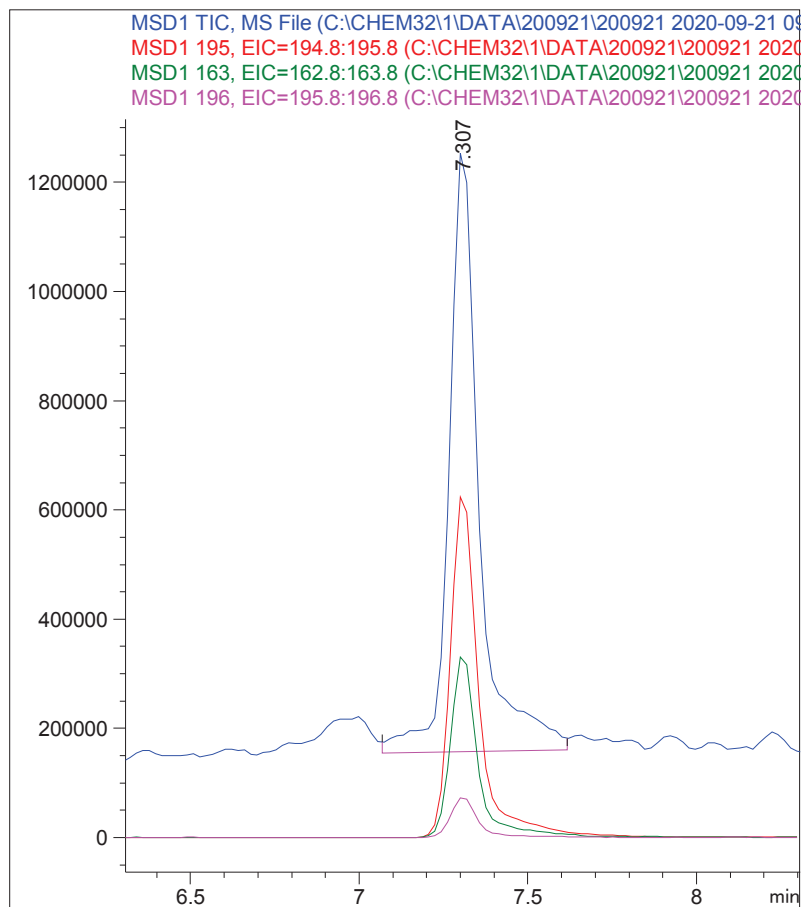
DateTime: 21 Sep 20 10:16 am +0100

Operator : SYSTEM

Vial : 2

Sample : Test\_Phtalat\_200921

Retention : 7.307 minutes



Sample Name: Test\_Phtalat\_200921

DataPath : C:\CHEM32\1\DATA\200921\200921 2020-09-21 09-23-17\TEST\_PHTALAT\_200921.D

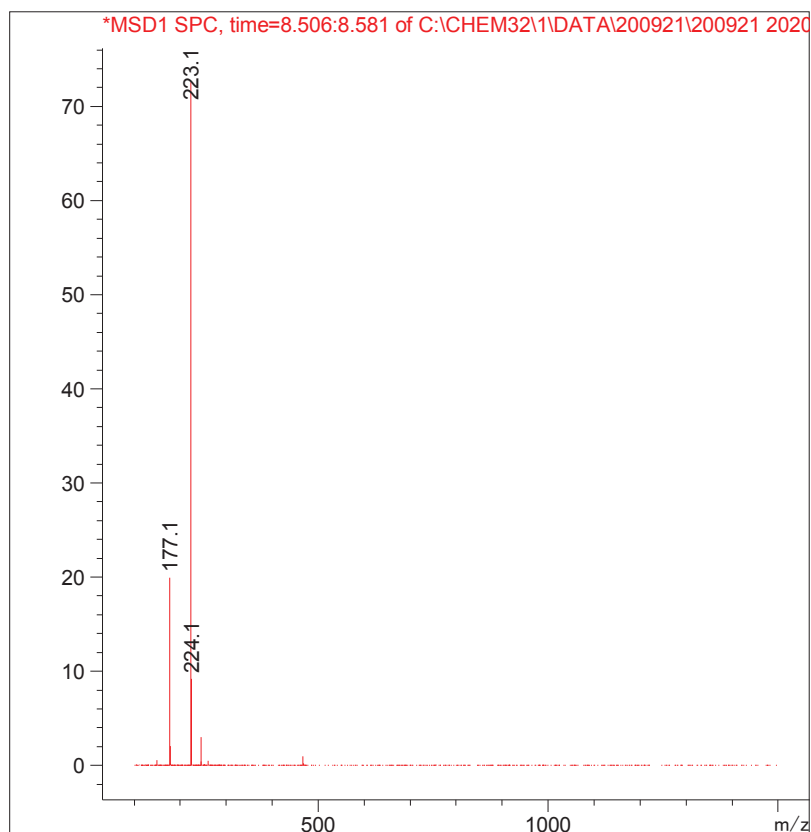
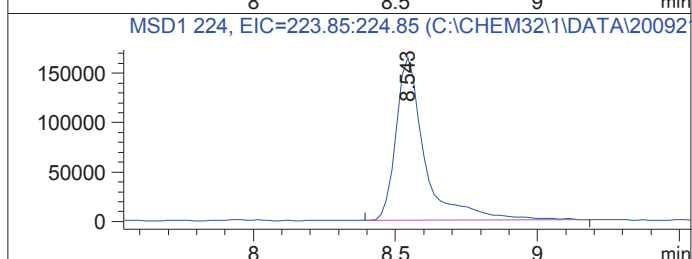
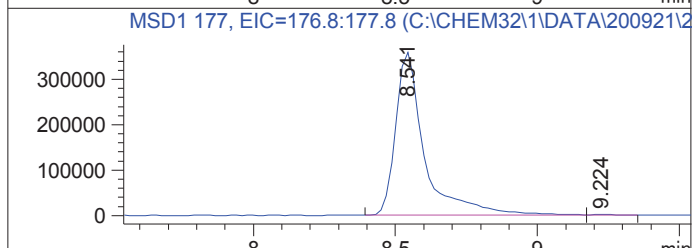
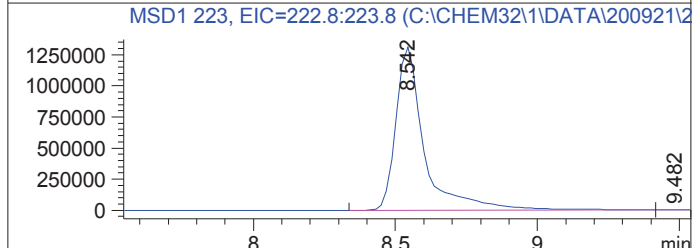
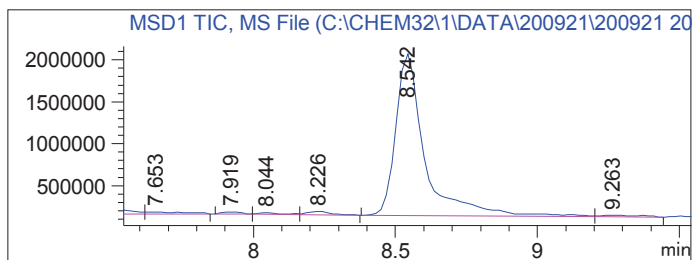
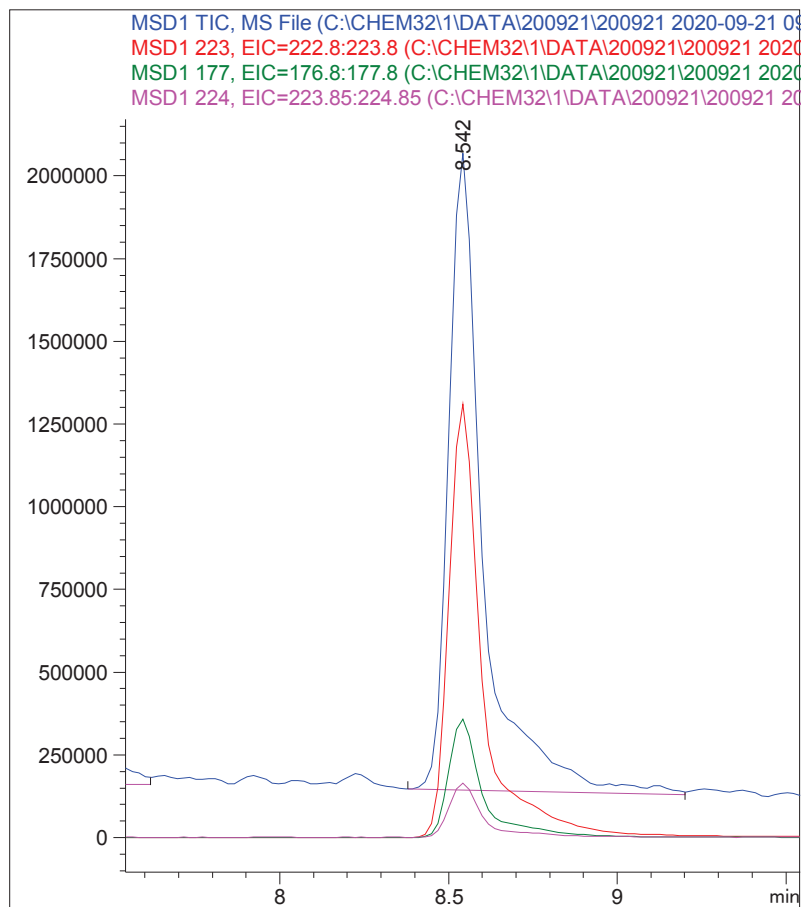
DateTime: 21 Sep 20 10:16 am +0100

Operator : SYSTEM

Vial : 2

Sample : Test\_Phtalat\_200921

Retention : 8.542 minutes



Sample Name: Test\_Phtalat\_200921

DataPath : C:\CHEM32\1\DATA\200921\200921 2020-09-21 09-23-17\TEST\_PHTALAT\_200921.D

DateTime: 21 Sep 20 10:16 am +0100

Operator : SYSTEM

Vial : 2

Sample : Test\_Phtalat\_200921

Retention : 10.894 minutes

