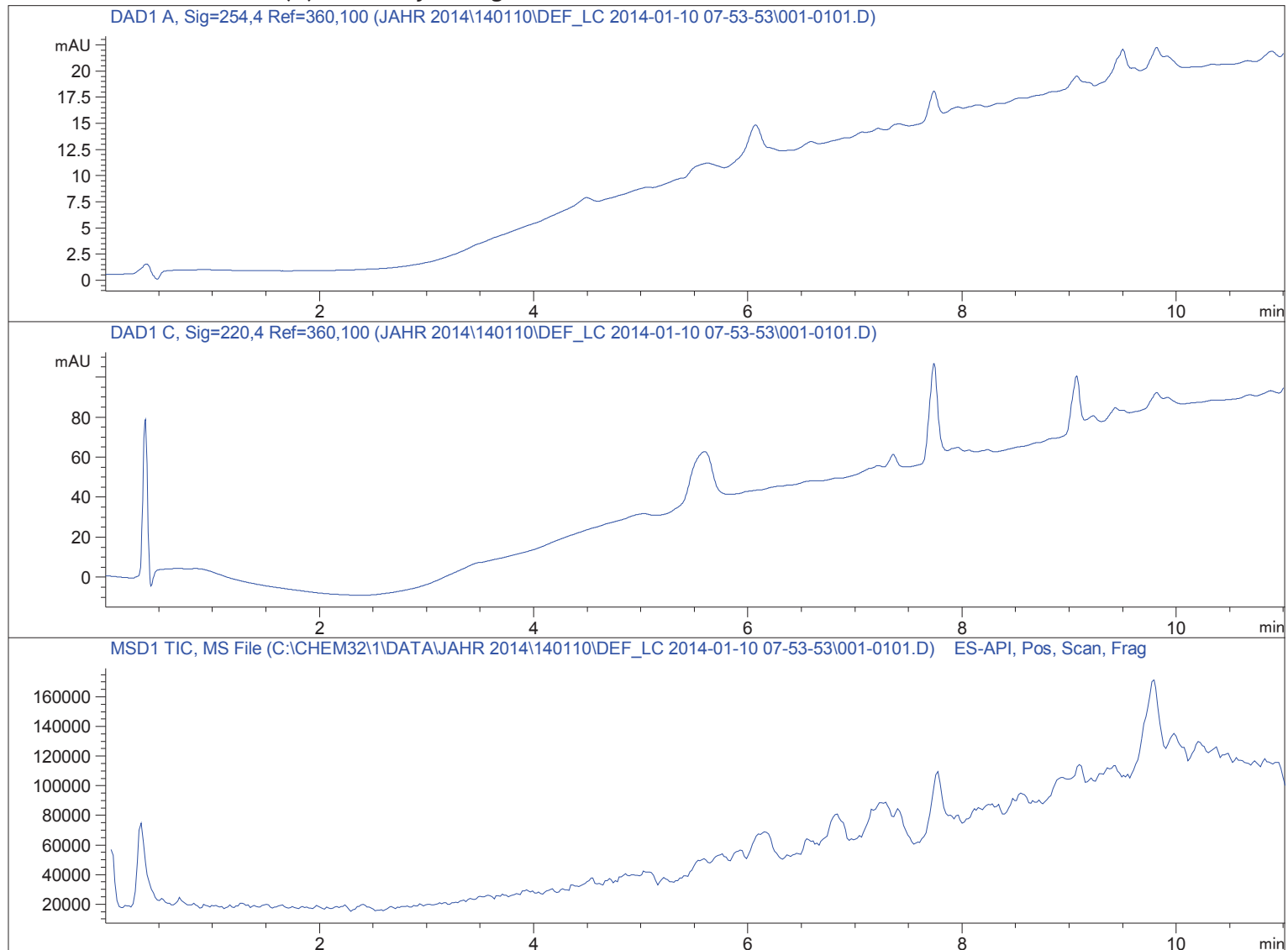


Sample Name: blind

```
=====
Acq. Operator   : SYSTEM                               Seq. Line :    1
Acq. Instrument : LCMS 1                               Location  : Vial 1
Injection Date  : 1/10/2014 7:55:29 AM                Inj       :    1
                                                    Inj Volume: 1.000 µl
Acq. Method     : C:\CHEM32\1\DATA\140110\DEF_LC 2014-01-10 07-53-53\STANDARD_220_254.M
Last changed    : 1/10/2014 7:53:53 AM by SYSTEM
Analysis Method : C:\CHEM32\1\DATA\JAHR 2014\140110\DEF_LC 2014-01-10 07-53-53\STANDARD_220_
                254.M (Sequence Method)
Last changed    : 2/26/2016 10:15:48 AM by SYSTEM
                (modified after loading)
Method Info     : Standard ACN:Wasser 20:80 -> 97:3 Flow 0.4 ml/min 220 nm, 254 nm
=====
```

Additional Info : Peak(s) manually integrated



```
=====
                          Area Percent Report
=====
```

```
Sorted By       :      Signal
Multiplier      :      1.0000
Dilution        :      1.0000
Do not use Multiplier & Dilution Factor with ISTDs
```

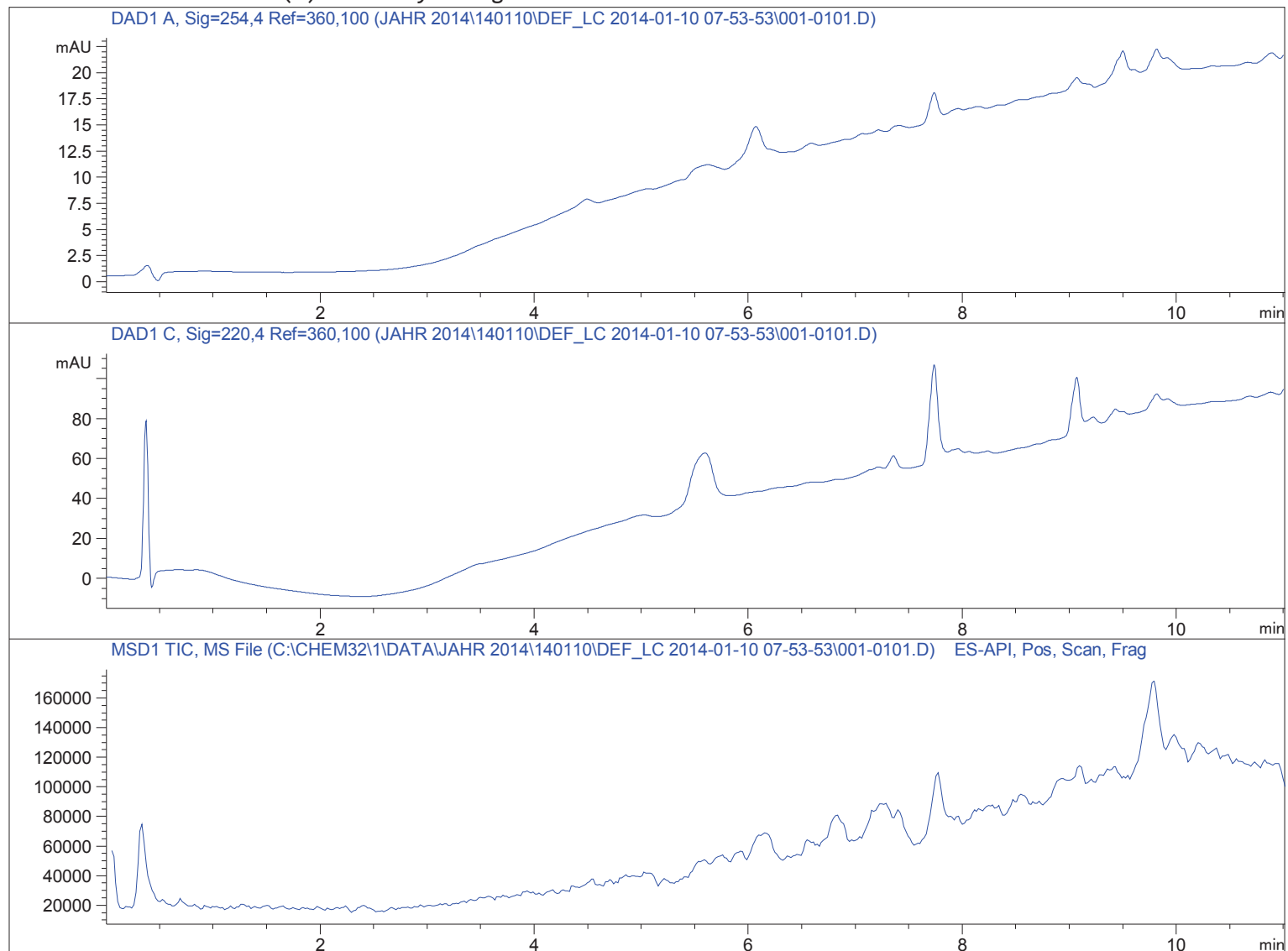
No peaks found

=====
*** End of Report ***

Sample Name: blind

```
=====
Acq. Operator   : SYSTEM                               Seq. Line :    1
Acq. Instrument : LCMS 1                               Location  : Vial 1
Injection Date  : 1/10/2014 7:55:29 AM                Inj       :    1
                                                    Inj Volume: 1.000 µl
Acq. Method     : C:\CHEM32\1\DATA\140110\DEF_LC 2014-01-10 07-53-53\STANDARD_220_254.M
Last changed    : 1/10/2014 7:53:53 AM by SYSTEM
Analysis Method : C:\CHEM32\1\DATA\JAHR 2014\140110\DEF_LC 2014-01-10 07-53-53\STANDARD_220_
                254.M (Sequence Method)
Last changed    : 2/26/2016 10:16:04 AM by SYSTEM
                (modified after loading)
Method Info     : Standard ACN:Wasser 20:80 -> 97:3 Flow 0.4 ml/min 220 nm, 254 nm
```

Additional Info : Peak(s) manually integrated



Spectra averaged over upper half of peaks.

Number of ions per peak: 6

Display Time Range(+/- mins): 1.0

*** End of Report ***