

D-7000 HPLC System Manager Report

Analyzed: 22.02.12 11:48

Reported: 22.02.12 14:37

Processed: 22.02.12 14:36

Data Path: C:\Win32App\HSM\samples\DATA\2110\

Processing Method: DAD2 Nucleodur RP 18 10-90

System(acquisition): DAD 2

Series:2110

Application: Samples

Vial Number: 1

Sample Name: sjb cpa2

Vial Type: UNK

Injection from this vial: 1 of 1

Volume: 50,0 ul

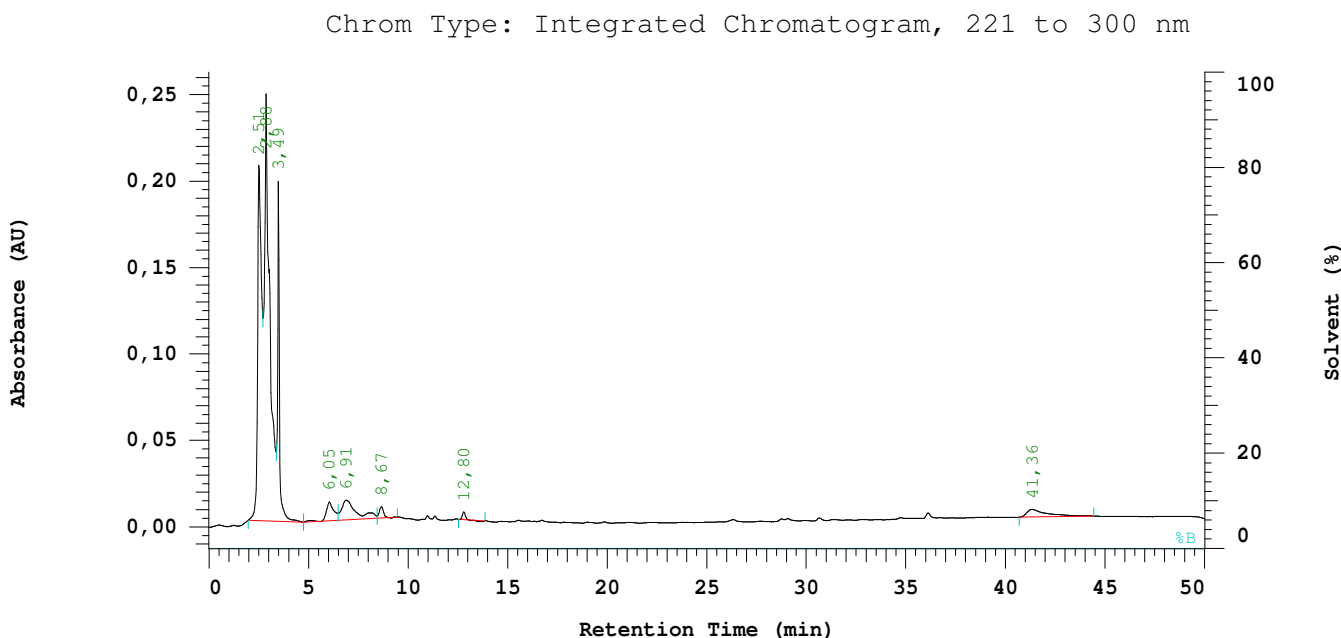
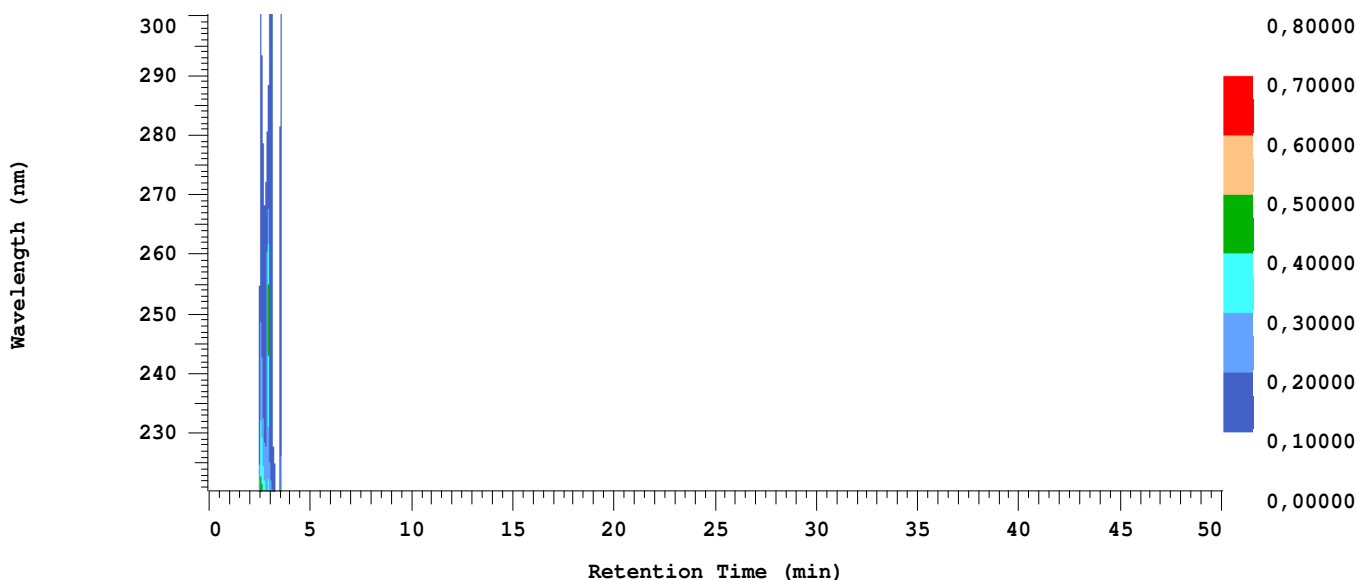
Sample Description:

Absorbance Mode: NORMAL(2.0 AU)

Absorbance Scale: 0.800

Spectral Bandwidth: AUTO

Spectral Interval: 1600 ms



Acquisition Method: DAD2 Nucleodur RP 18 10-90

Column Type: Devosil

Developed by:

Pump A Type: L-7100

Solvent A: ACN

Solvent B: 0.1% HCOOH

Solvent C: Wasser

Solvent D: Methanol

Method Description:

Chrom Type: Integrated Chromatogram, 221 to 300 nm

Peak Quantitation: AREA

Calculation Method: AREA%

No.	RT	Area	Conc 1	BC
1	2,51	1388978	27,643	BV
2	2,88	2324279	46,257	VV
3	3,49	658010	13,096	VB
4	6,05	141327	2,813	BV
5	6,91	293255	5,836	VB
6	8,67	44456	0,885	BB
7	12,80	15870	0,316	BB
8	41,36	158495	3,154	BB
		5024670	100,000	

Peak rejection level: 0

Channel 1 Noise: Not Measured

Channel 1 Drift: Not Measured

Configuration parameters:

Interface Module: D-7000

Channel 1 Detector: L-7455

Column Oven: None

Pump A: L-7100

Number of Solvents pump A: 4

External Instrument Software: None

Gradient Mode: Low

Channel 2 Detector: None

Autosampler: L-7250

Pump B: None

Number of Solvents pump B: 1

Column Name: Devosil

Method Information:

Method Name: DAD2 Nucleodur RP 18 10-90

Developed by:

Description:

Pump Setup:

Main Pump (A) Pressure Limit: 0 to 412 bar

Pump A (L-7100):

Solvent A: ACN

Solvent C: Wasser

Solvent B: 0.1% HCOOH

Solvent D: Methanol

Pump A (L-7100):

Pump Solvent and Event Table

Time (min)	%ACN	%0.1%	%Wasse	%Metha	Flow (ml/min)	Event 1	Event 2	Event 3	Event 4
0,0	10,0	0,0	90,0	0,0	1,000				
35,0	90,0	0,0	10,0	0,0	1,000				
45,0	90,0	0,0	10,0	0,0	1,000				
50,0	10,0	0,0	90,0	0,0	1,000				

Autosampler Setup (L-7250):

Syringe Speed: 3

Syringe Volume: 500 ul

Lead Volume: 30,00 ul

Needle Wash Strokes: 3

Injection Port Wash Stroke: 3

Needle Down Speed: Fast

Injection Method: Cut

Rear Volume: 30,00 ul

Needle Wash Speed: 5

Injection Port Wash Speed: 5

Channel 1 Detector (L-7455):

Spectral Bandwidth: AUTO

Absorbance Mode: Normal(2.0AU)

Wavelength Range: 220 to 300 nm

Start Time: 0,00 min

Slit: 4 nm

Check Perfomance before Series Start: NO

Spectral Interval: 1600 ms

Auto Zero before Injection: YES

Monitoring Wavelenth: 220 nm

Stop Time: 50,00 min

Method DP for channel 1

Calculation Method:

Calculation Method: AREA%

Peak identification Window: % Time

UNK peaks identification rule: Closest peak

Update RT in component Table: NO

Do library search: NO

Peak Quantitation: Area

Concentration data from method.

Do blank subtraction: NO

Component Table

RT (min)	Window (%)	Func1	Func2	Func3	E-Conc	Tolerance (%)
-------------	---------------	-------	-------	-------	--------	------------------