

D-7000 HPLC System Manager Report

Analyzed: 09.12.14 15:01

Reported: 09.12.14 16:10

Processed: 09.12.14 15:31

Data Path: C:\Win32App\HSM\samples\DATA\2505\

Processing Method: DAD2 Orbit

System(acquisition): DAD 2

Series:2505

Application: Samples

Vial Number: 1

Sample Name: sksnp39

Vial Type: UNK

Injection from this vial: 1 of 1

Volume: 5,0 ul

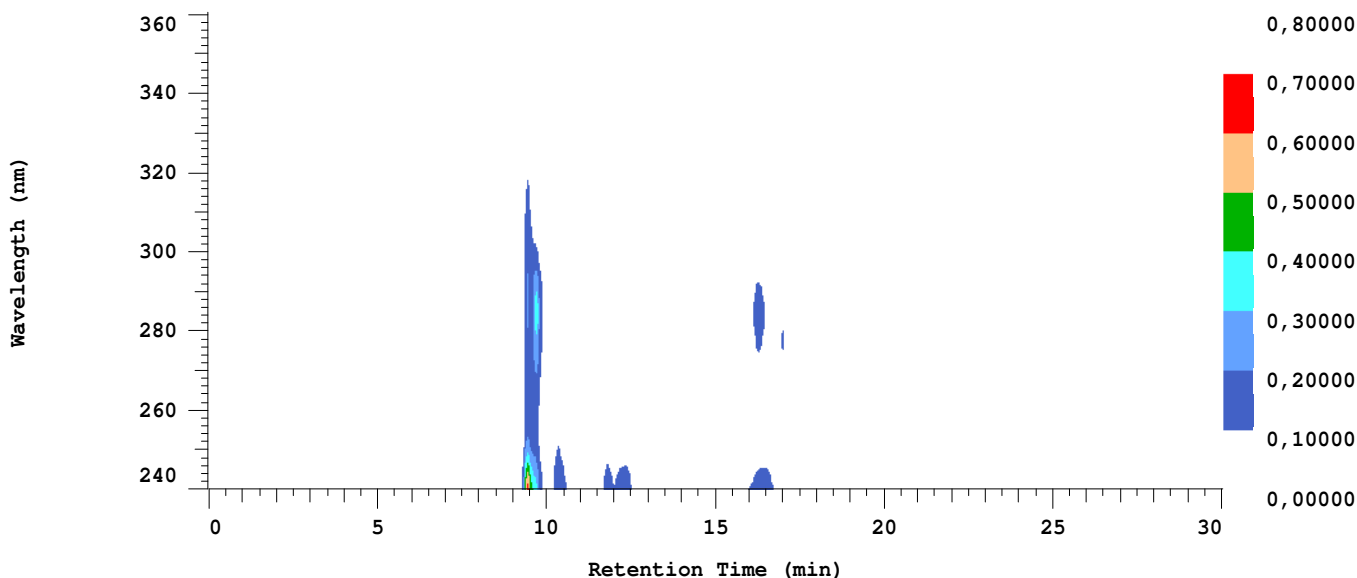
Sample Description:

Absorbance Mode: NORMAL(2.0 AU)

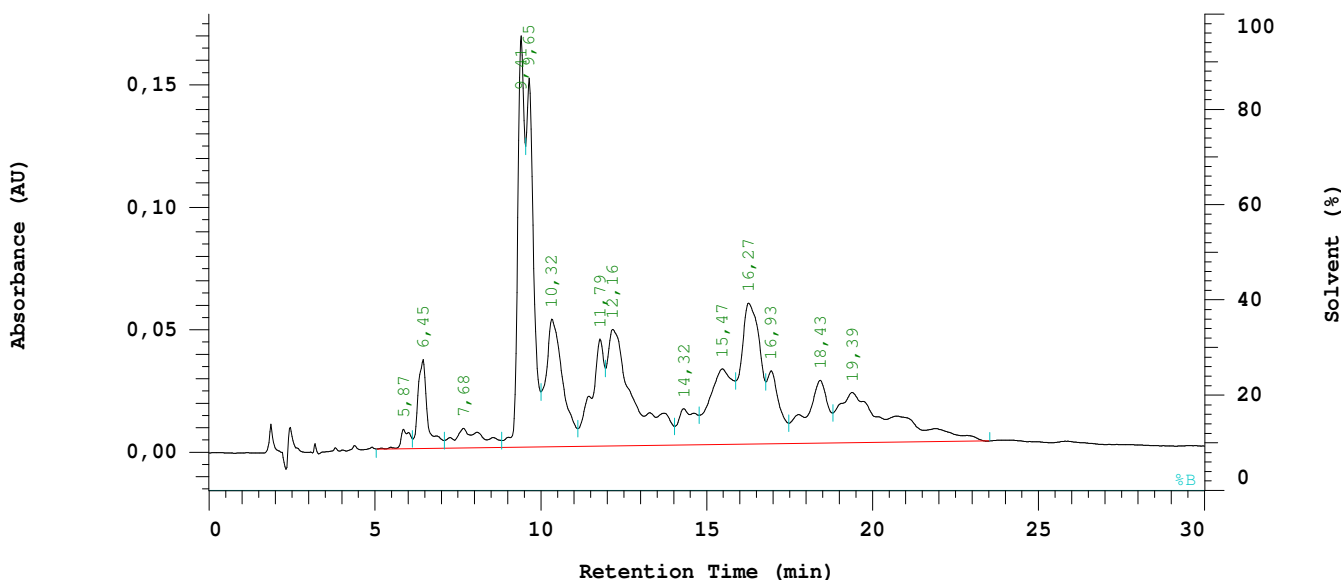
Absorbance Scale: 0.800

Spectral Bandwidth: AUTO

Spectral Interval: 1600 ms



Chrom Type: Integrated Chromatogram, 240 to 361 nm



Acquisition Method: DAD2 Orbit

Column Type: Orbit 100 C18

Developed by: JD

Pump A Type: L-7100

Solvent A: ACN

Solvent B: 0.1% TFA

Solvent C: Wasser

Solvent D: THF

Method Description:

Chrom Type: Integrated Chromatogram, 240 to 361 nm

Peak Quantitation: AREA

Calculation Method: AREA%

No.	RT	Area	Conc 1	BC
1	5,87	71516	0,694	BV
2	6,45	366414	3,556	VV
3	7,68	238422	2,314	VV
4	9,41	1164366	11,301	VV
5	9,65	1188740	11,537	VV
6	10,32	948016	9,201	VV
7	11,79	584670	5,675	VV
8	12,16	1349590	13,099	VV
9	14,32	271472	2,635	VV
10	15,47	755512	7,333	VV
11	16,27	1156399	11,224	VV
12	16,93	410844	3,987	VV
13	18,43	600696	5,830	VV
14	19,39	1196687	11,615	VB
		10303344	100,000	

Peak rejection level: 0

Channel 1 Noise: Not Measured

Channel 1 Drift: Not Measured

Configuration parameters:

Interface Module: D-7000

Channel 1 Detector: L-7455

Column Oven: None

Pump A: L-7100

Number of Solvents pump A: 4

External Instrument Software: None

Gradient Mode: Low

Channel 2 Detector: None

Autosampler: L-7250

Pump B: None

Number of Solvents pump B: 1

Column Name: Orbit 100 C18

Method Information:

Method Name: DAD2 Orbit

Description:

Developed by: JD

Pump Setup:

Main Pump (A) Pressure Limit: 0 to 412 bar

Pump A (L-7100):

Solvent A: ACN

Solvent C: Wasser

Solvent B: 0.1% TFA

Solvent D: THF

Pump A (L-7100):

Pump Solvent and Event Table

Time (min)	%ACN	%0.1%	%Wasse	%THF	Flow (ml/min)	Event 1	Event 2	Event 3	Event 4
0,0	0,0	0,0	40,0	60,0	0,800				
30,0	0,0	0,0	40,0	60,0	0,800				

Autosampler Setup (L-7250):

Syringe Speed: 3

Syringe Volume: 500 ul

Lead Volume: 30,00 ul

Needle Wash Strokes: 3

Injection Port Wash Stroke: 3

Needle Down Speed: Fast

Injection Method: Cut

Rear Volume: 30,00 ul

Needle Wash Speed: 5

Injection Port Wash Speed: 5

Channel 1 Detector (L-7455):

Spectral Bandwidth: AUTO

Absorbance Mode: Normal(2.0AU)

Wavelength Range: 240 to 360 nm

Start Time: 0,00 min

Slit: 4 nm

Check Performance before Series Start: NO

Spectral Interval: 1600 ms

Auto Zero before Injection: YES

Monitoring Wavelength: 254 nm

Stop Time: 30,00 min

Method DP for channel 1

Calculation Method:

Calculation Method: AREA%

Peak identification Window: % Time

UNK peaks identification rule: Closest peak

Update RT in component Table: NO

Do library search: NO

Peak Quantitation: Area

Concentration data from method.

Do blank subtraction: NO

Component Table

RT (min)	Window (%)	Func1	Func2	Func3	E-Conc	Tolerance (%)
-------------	---------------	-------	-------	-------	--------	------------------

0,01	10,00					
------	-------	--	--	--	--	--