

### D-7000 HPLC System Manager Report

Analyzed: 20.05.16 11:18

Reported: 20.05.16 12:26

Processed: 20.05.16 12:26

Data Path: C:\Win32App\HSM\samples\DATA\2828\

Processing Method: DAD2 Orbit 80THF40min

System(acquisition): DAD 2

Series:2828

Application: Samples

Vial Number: 3

**Sample Name: mctk20281f2**

Vial Type: UNK

Injection from this vial: 1 of 1

Volume: 10,0 ul

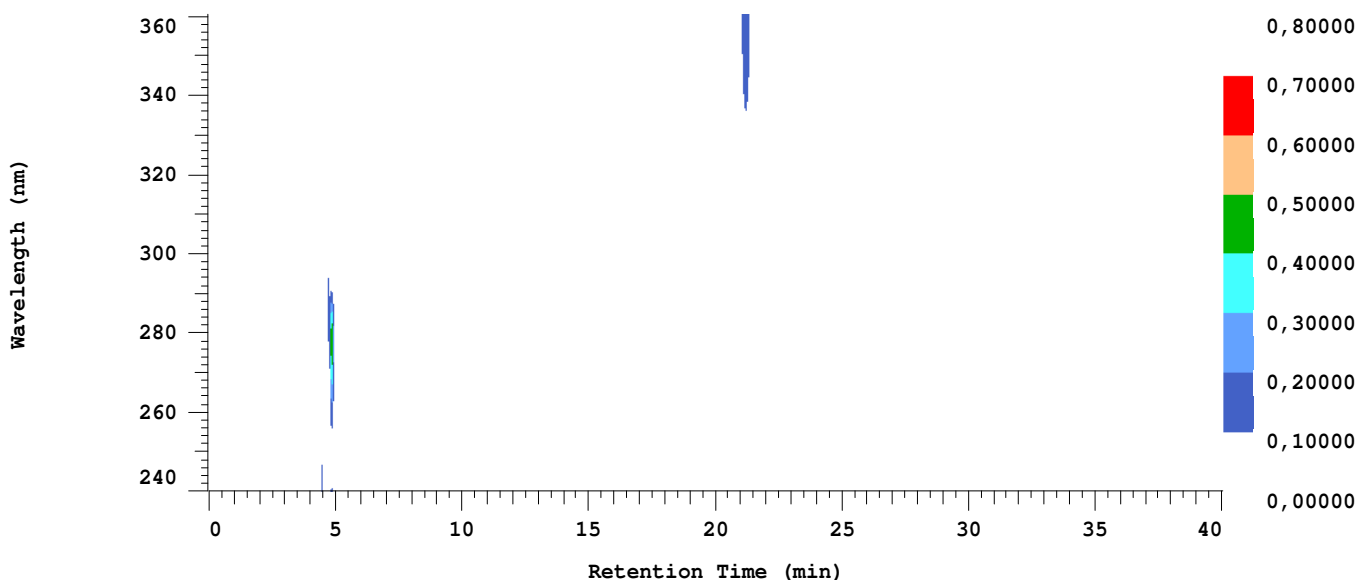
Sample Description:

Absorbance Mode: NORMAL(2.0 AU)

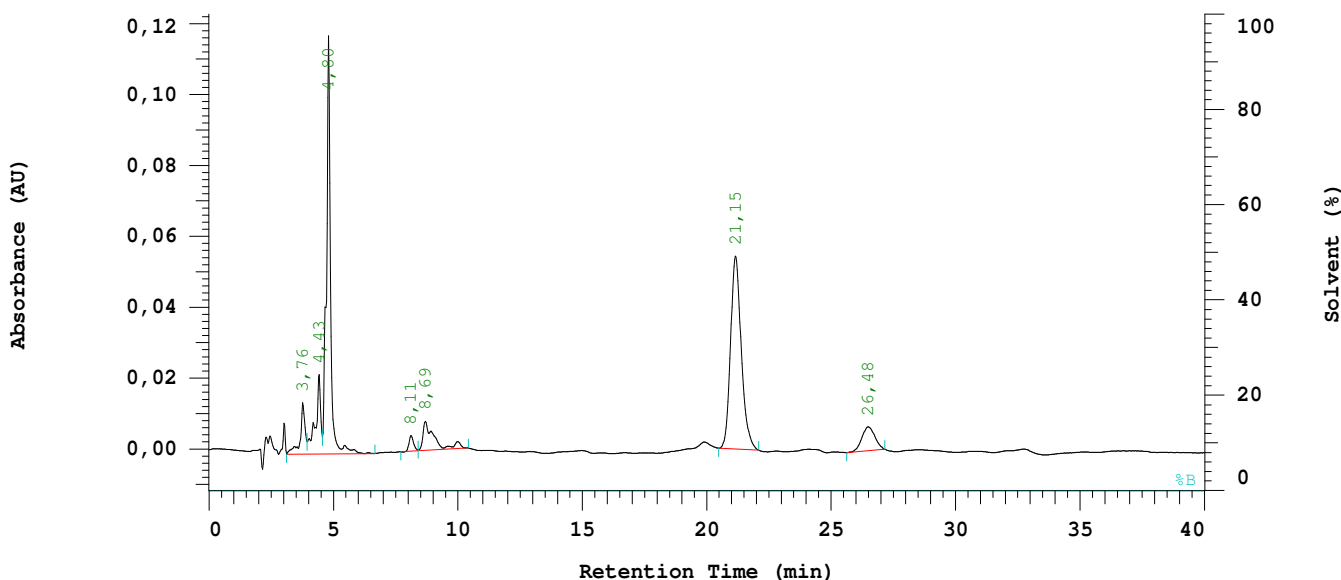
Absorbance Scale: 0.800

Spectral Bandwidth: AUTO

Spectral Interval: 1600 ms



Chrom Type: Integrated Chromatogram, 240 to 361 nm



Acquisition Method: DAD2 Orbit 80THF40min

Column Type: Orbit 100 C18

Developed by: JD

Pump A Type: L-7100

Solvent A: ACN

Solvent B: 0.1% TFA

Solvent C: Wasser

Solvent D: THF

Method Description: 80 % THF/ 20 % Wasser

Chrom Type: Integrated Chromatogram, 240 to 361 nm

Peak Quantitation: AREA

Calculation Method: AREA%

No.	RT	Area	Conc 1	BC
1	3,76	95201	4,725	BV
2	4,43	160159	7,949	VV
3	4,80	676893	33,597	VB
4	8,11	27098	1,345	BB
5	8,69	123094	6,110	BB
6	21,15	812380	40,322	BB
7	26,48	119900	5,951	BB
		2014725	100,000	

Peak rejection level: 0

Channel 1 Noise: Not Measured

Channel 1 Drift: Not Measured

## Configuration parameters:

Interface Module: D-7000

Channel 1 Detector: L-7455

Column Oven: None

Pump A: L-7100

Number of Solvents pump A: 4

External Instrument Software: None

Gradient Mode: Low

Channel 2 Detector: None

Autosampler: L-7250

Pump B: None

Number of Solvents pump B: 1

Column Name: Orbit 100 C18

## Method Information:

Method Name: DAD2 Orbit 80THF40min

Developed by: JD

Description:

80 % THF/ 20 % Wasser

## Pump Setup:

Main Pump (A) Pressure Limit: 0 to 412 bar

## Pump A (L-7100):

Solvent A: ACN

Solvent B: 0.1% TFA

Solvent C: Wasser

Solvent D: THF

## Pump A (L-7100):

Pump Solvent and Event Table

Time (min)	%ACN	%0.1%	%Wasse	%THF	Flow (ml/min)	Event 1	Event 2	Event 3	Event 4
0,0	0,0	0,0	20,0	80,0	0,800				
40,0	0,0	0,0	20,0	80,0	0,800				

## Autosampler Setup (L-7250):

Syringe Speed: 3

Needle Down Speed: Fast

Syringe Volume: 500 ul

Injection Method: Cut

Lead Volume: 30,00 ul

Rear Volume: 30,00 ul

Needle Wash Strokes: 3

Needle Wash Speed: 5

Injection Port Wash Stroke: 3

Injection Port Wash Speed: 5

## Channel 1 Detector (L-7455):

Spectral Bandwidth: AUTO

Spectral Interval: 1600 ms

Absorbance Mode: Normal(2.0AU)

Auto Zero before Injection: YES

Wavelength Range: 240 to 360 nm

Monitoring Wavelength: 254 nm

Start Time: 0,00 min

Stop Time: 40,00 min

Slit: 4 nm

Check Performance before Series Start: NO

## Method DP for channel 1

## Calculation Method:

Calculation Method: AREA%

Peak Quantitation: Area

Peak identification Window: % Time

Concentration data from method.

UNK peaks identification rule: Closest peak

Update RT in component Table: NO

Do blank subtraction: NO

Do library search: NO

## Component Table

RT (min)	Window (%)	Func1	Func2	Func3	E-Conc	Tolerance (%)
0,01	10,00					