

D-7000 HPLC System Manager Report

Analyzed: 20.05.16 09:54

Reported: 20.05.16 12:24

Processed: 20.05.16 12:24

Data Path: C:\Win32App\HSM\samples\DATA\2826\

Processing Method: DAD2 Orbit 80THF40min

System(acquisition): DAD 2

Series:2826

Application: Samples

Vial Number: 2

Sample Name: mctk20241f3

Vial Type: UNK

Injection from this vial: 1 of 1

Volume: 10,0 ul

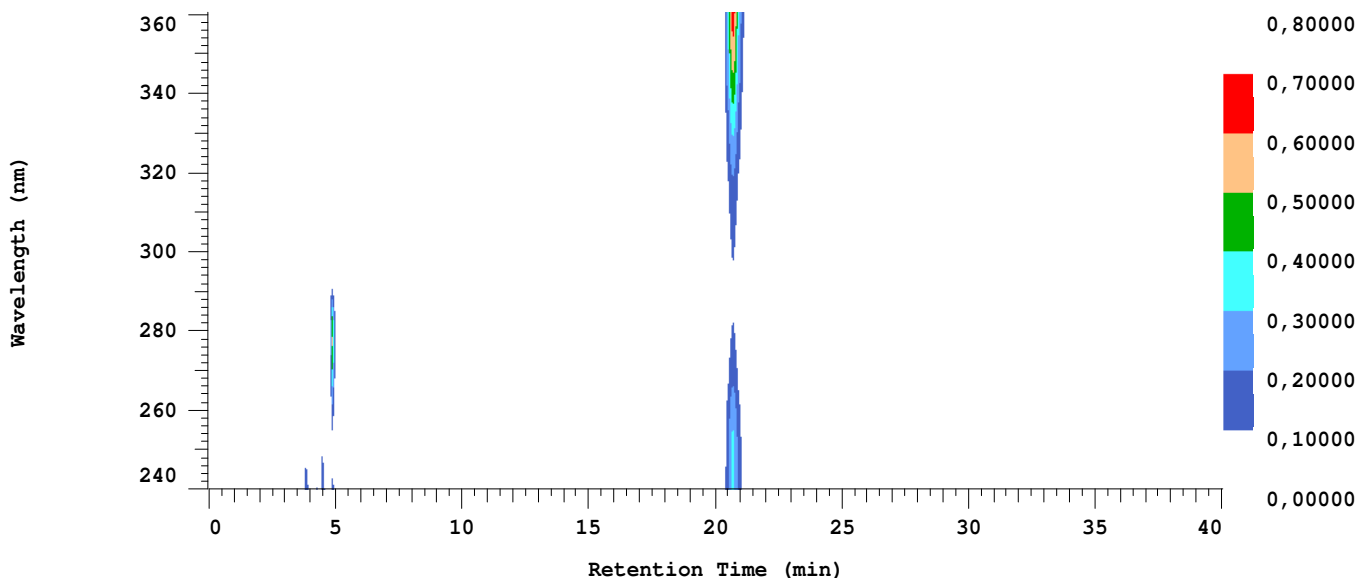
Sample Description:

Absorbance Mode: NORMAL(2.0 AU)

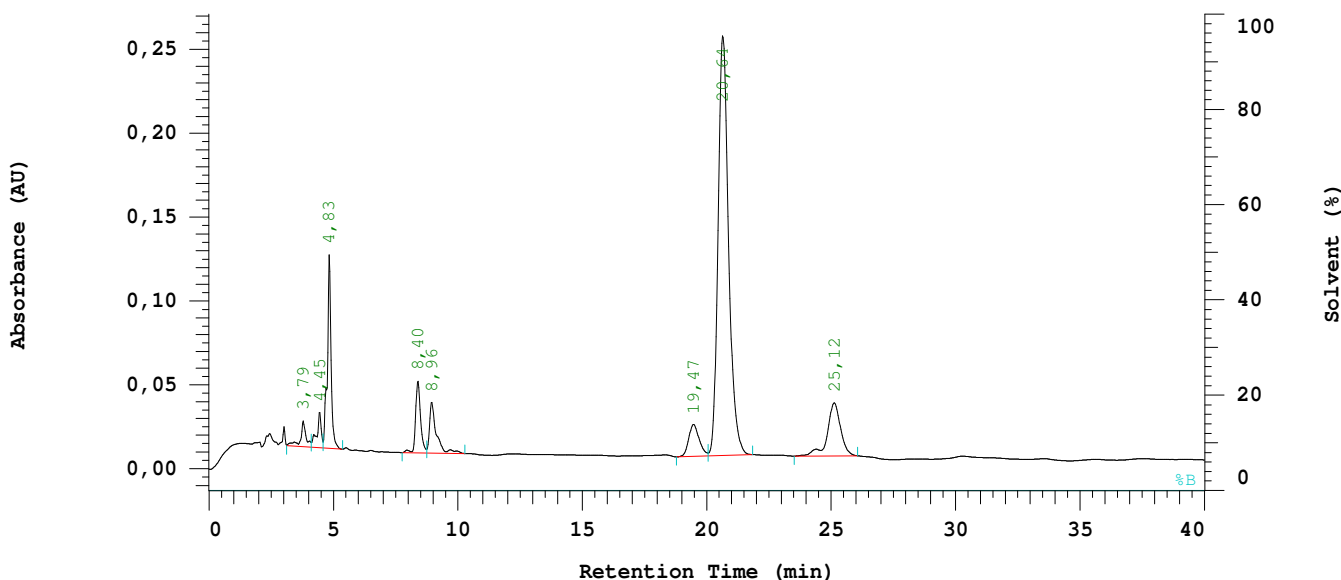
Absorbance Scale: 0.800

Spectral Bandwidth: AUTO

Spectral Interval: 1600 ms



Chrom Type: Integrated Chromatogram, 240 to 361 nm



Acquisition Method: DAD2 Orbit 80THF40min

Column Type: Orbit 100 C18

Developed by: JD

Pump A Type: L-7100

Solvent A: ACN

Solvent B: 0.1% TFA

Solvent C: Wasser

Solvent D: THF

Method Description: 80 % THF/ 20 % Wasser

Chrom Type: Integrated Chromatogram, 240 to 361 nm

Peak Quantitation: AREA

Calculation Method: AREA%

No.	RT	Area	Conc 1	BC
1	3,79	115666	1,944	BB
2	4,45	129636	2,178	BV
3	4,83	600850	10,096	VB
4	8,40	293560	4,933	BB
5	8,96	286572	4,815	BB
6	19,47	277398	4,661	BB
7	20,64	3661355	61,521	BB
8	25,12	586324	9,852	BB
		5951361	100,000	

Peak rejection level: 0

Channel 1 Noise: Not Measured

Channel 1 Drift: Not Measured

Configuration parameters:

Interface Module: D-7000

Channel 1 Detector: L-7455

Column Oven: None

Pump A: L-7100

Number of Solvents pump A: 4

External Instrument Software: None

Gradient Mode: Low

Channel 2 Detector: None

Autosampler: L-7250

Pump B: None

Number of Solvents pump B: 1

Column Name: Orbit 100 C18

Method Information:

Method Name: DAD2 Orbit 80THF40min

Developed by: JD

Description:

80 % THF/ 20 % Wasser

Pump Setup:

Main Pump (A) Pressure Limit: 0 to 412 bar

Pump A (L-7100):

Solvent A: ACN

Solvent B: 0.1% TFA

Solvent C: Wasser

Solvent D: THF

Pump A (L-7100):

Pump Solvent and Event Table

Time (min)	%ACN	%0.1%	%Wasse	%THF	Flow (ml/min)	Event 1	Event 2	Event 3	Event 4
0,0	0,0	0,0	20,0	80,0	0,800				
40,0	0,0	0,0	20,0	80,0	0,800				

Autosampler Setup (L-7250):

Syringe Speed: 3

Needle Down Speed: Fast

Syringe Volume: 500 ul

Injection Method: Cut

Lead Volume: 30,00 ul

Rear Volume: 30,00 ul

Needle Wash Strokes: 3

Needle Wash Speed: 5

Injection Port Wash Stroke: 3

Injection Port Wash Speed: 5

Channel 1 Detector (L-7455):

Spectral Bandwidth: AUTO

Spectral Interval: 1600 ms

Absorbance Mode: Normal(2.0AU)

Auto Zero before Injection: YES

Wavelength Range: 240 to 360 nm

Monitoring Wavelength: 254 nm

Start Time: 0,00 min

Stop Time: 40,00 min

Slit: 4 nm

Check Performance before Series Start: NO

Method DP for channel 1

Calculation Method:

Calculation Method: AREA%

Peak Quantitation: Area

Peak identification Window: % Time

Concentration data from method.

UNK peaks identification rule: Closest peak

Update RT in component Table: NO

Do blank subtraction: NO

Do library search: NO

Component Table

RT (min)	Window (%)	Func1	Func2	Func3	E-Conc	Tolerance (%)
0,01	10,00					