

### D-7000 HPLC System Manager Report

Analyzed: 12.03.15 12:40

Reported: 12.03.15 14:02

Processed: 12.03.15 13:11

Data Path: C:\Win32App\HSM\samples\DATA\2593\

Processing Method: DAD2 Orbit

System(acquisition): DAD 2

Series:2593

Application: Samples

Vial Number: 11

**Sample Name: mcsksnp39**

Vial Type: UNK

Injection from this vial: 1 of 1

Volume: 5,0 ul

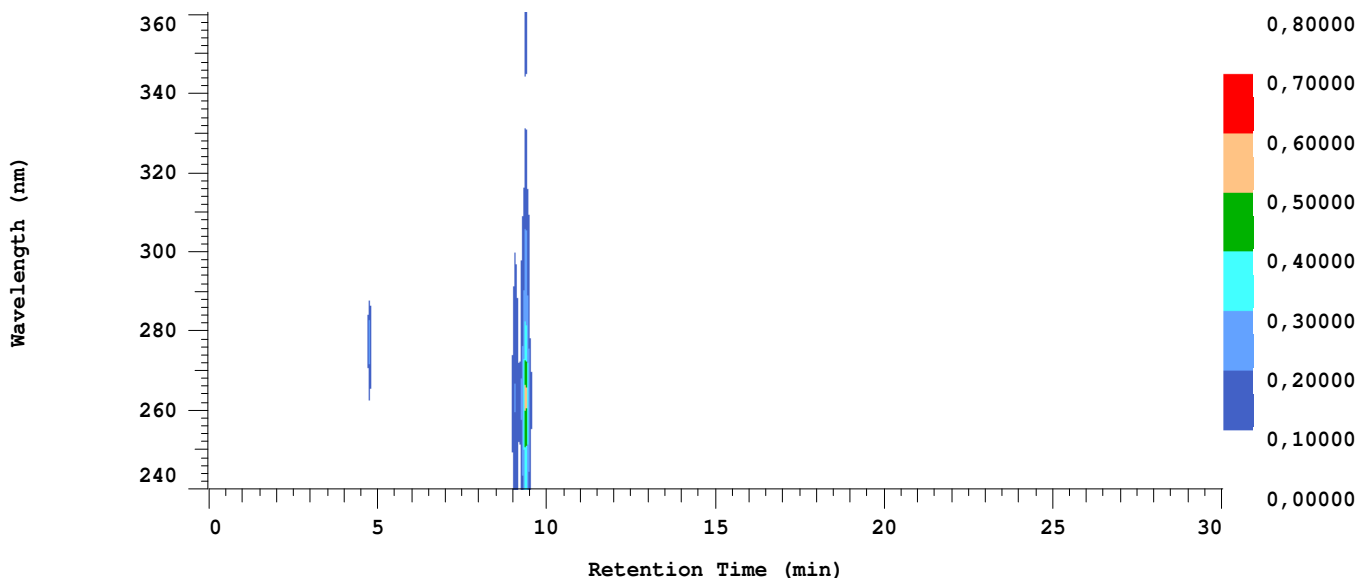
Sample Description:

Absorbance Mode: NORMAL(2.0 AU)

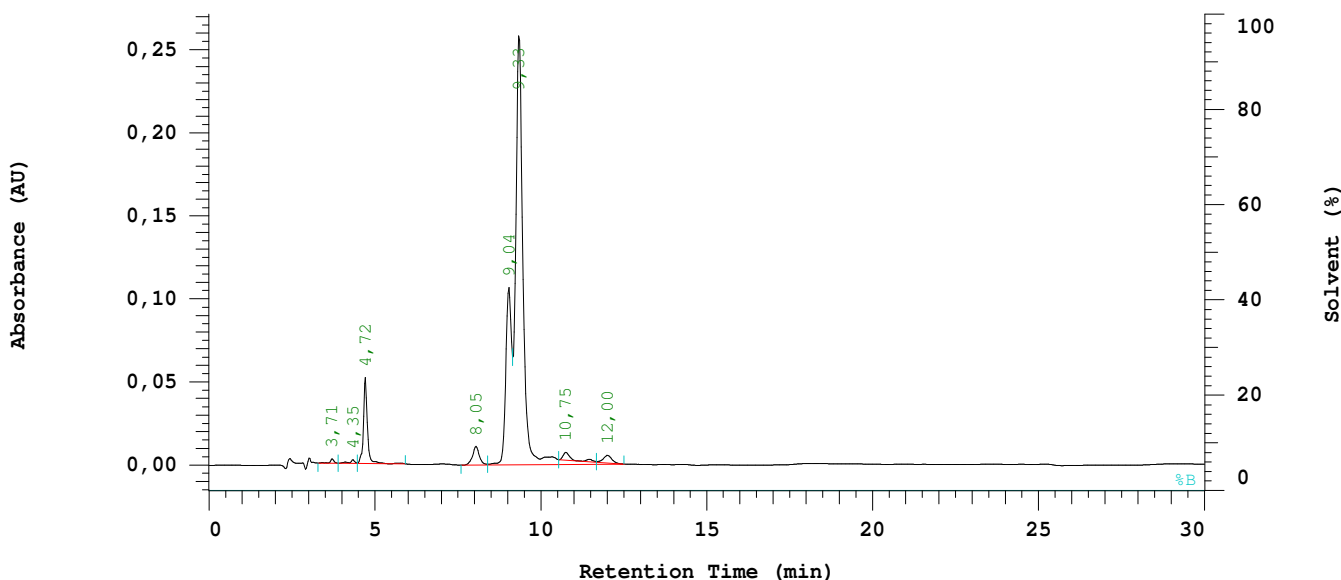
Absorbance Scale: 0.800

Spectral Bandwidth: AUTO

Spectral Interval: 1600 ms



Chrom Type: Integrated Chromatogram, 240 to 361 nm



Acquisition Method: DAD2 Orbit

Column Type: Orbit 100 C18

Developed by: JD

Pump A Type: L-7100

Solvent A: ACN

Solvent B: 0.1% TFA

Solvent C: Wasser

Solvent D: THF

Method Description:

Chrom Type: Integrated Chromatogram, 240 to 361 nm

Peak Quantitation: AREA

Calculation Method: AREA%

No.	RT	Area	Conc 1	BC
1	3,71	10458	0,336	BB
2	4,35	11706	0,376	BB
3	4,72	214436	6,883	BB
4	8,05	81523	2,617	BB
5	9,04	606979	19,483	BV
6	9,33	2103233	67,509	VV
7	10,75	44465	1,427	TBB
8	12,00	42693	1,370	TBB
		3115493	100,000	

Peak rejection level: 0

Channel 1 Noise: Not Measured

Channel 1 Drift: Not Measured

## Configuration parameters:

Interface Module: D-7000

Channel 1 Detector: L-7455

Column Oven: None

Pump A: L-7100

Number of Solvents pump A: 4

External Instrument Software: None

Gradient Mode: Low

Channel 2 Detector: None

Autosampler: L-7250

Pump B: None

Number of Solvents pump B: 1

Column Name: Orbit 100 C18

## Method Information:

Method Name: DAD2 Orbit

Description:

Developed by: JD

## Pump Setup:

Main Pump (A) Pressure Limit: 0 to 412 bar

## Pump A (L-7100):

Solvent A: ACN

Solvent C: Wasser

Solvent B: 0.1% TFA

Solvent D: THF

## Pump A (L-7100):

Pump Solvent and Event Table

Time (min)	%ACN	%0.1%	%Wasse	%THF	Flow (ml/min)	Event 1	Event 2	Event 3	Event 4
0,0	0,0	0,0	20,0	80,0	0,800				
30,0	0,0	0,0	20,0	80,0	0,800				

## Autosampler Setup (L-7250):

Syringe Speed: 3

Syringe Volume: 500 ul

Lead Volume: 30,00 ul

Needle Wash Strokes: 3

Injection Port Wash Stroke: 3

Needle Down Speed: Fast

Injection Method: Cut

Rear Volume: 30,00 ul

Needle Wash Speed: 5

Injection Port Wash Speed: 5

## Channel 1 Detector (L-7455):

Spectral Bandwidth: AUTO

Absorbance Mode: Normal(2.0AU)

Wavelength Range: 240 to 360 nm

Start Time: 0,00 min

Slit: 4 nm

Check Performance before Series Start: NO

Spectral Interval: 1600 ms

Auto Zero before Injection: YES

Monitoring Wavelength: 254 nm

Stop Time: 30,00 min

## Method DP for channel 1

## Calculation Method:

Calculation Method: AREA%

Peak identification Window: % Time

UNK peaks identification rule: Closest peak

Update RT in component Table: NO

Do library search: NO

Peak Quantitation: Area

Concentration data from method.

Do blank subtraction: NO

## Component Table

RT (min)	Window (%)	Func1	Func2	Func3	E-Conc	Tolerance (%)
-------------	---------------	-------	-------	-------	--------	------------------

0,01	10,00					
------	-------	--	--	--	--	--