

### D-7000 HPLC System Manager Report

Analyzed: 08.10.14 15:44

Reported: 08.10.14 16:26

Processed: 08.10.14 16:26

Data Path: C:\Win32App\HSM\samples\DATA\2480\

Processing Method: DAD2 Orbit

System(acquisition): DAD 2

Series:2480

Application: Samples

Vial Number: 1

Sample Name: mcsk097

Vial Type: UNK

Injection from this vial: 1 of 1

Volume: 10,0 ul

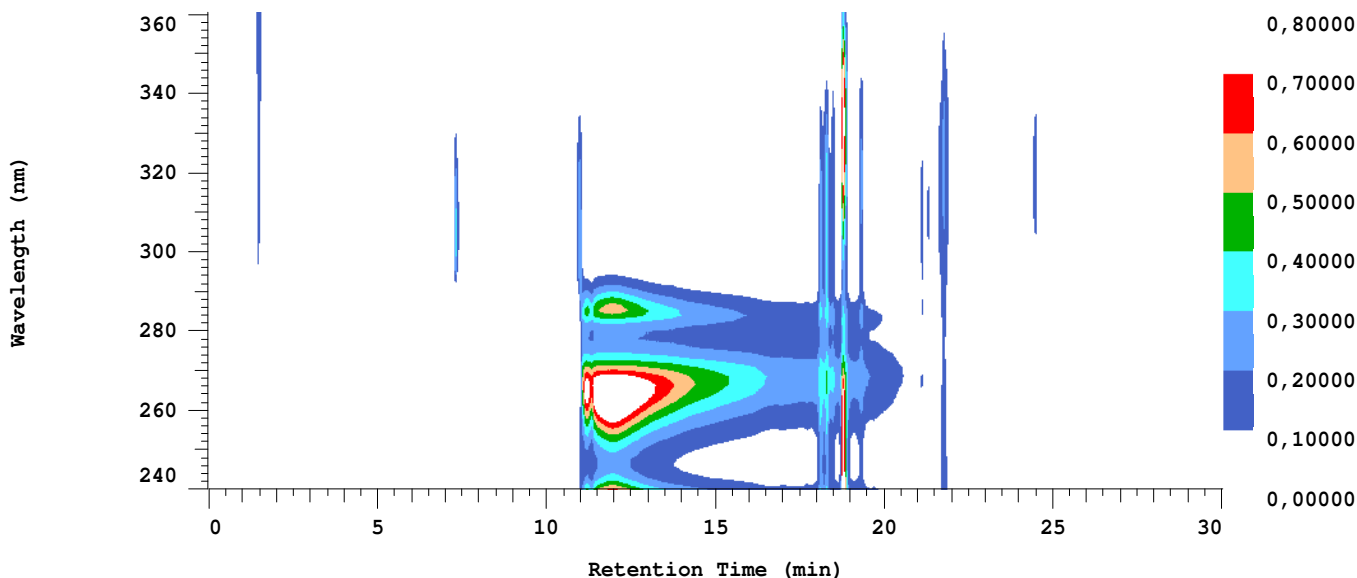
Sample Description:

Absorbance Mode: NORMAL(2.0 AU)

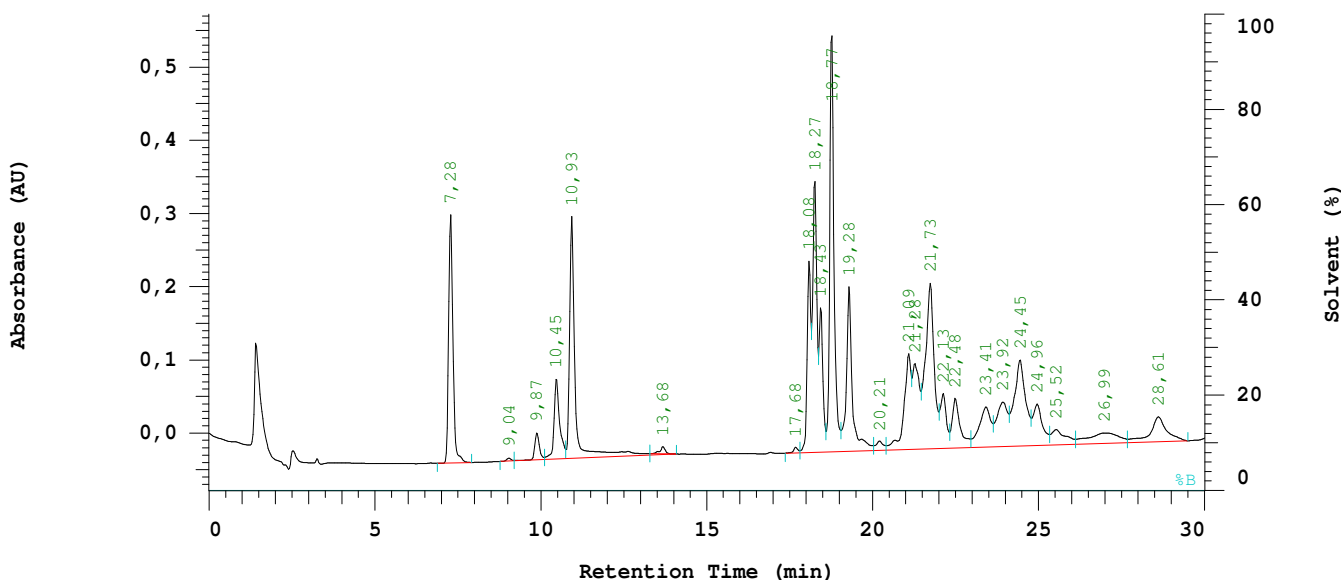
Absorbance Scale: 0.800

Spectral Bandwidth: AUTO

Spectral Interval: 1600 ms



Chrom Type: Fixed WL Chromatogram, 310 nm



Acquisition Method: DAD2 Orbit

Column Type: Orbit 100 C18

Developed by: JD

Pump A Type: L-7100

Solvent A: ACN

Solvent B: 0.1% TFA

Solvent C: Wasser

Solvent D: THF

Method Description:

Chrom Type: Fixed WL Chromatogram, 310 nm

Peak Quantitation: AREA

Calculation Method: AREA%

No.	RT	Area	Conc 1	BC
1	7,28	1553600	7,189	BB
2	9,04	17443	0,081	BB
3	9,87	179512	0,831	BV
4	10,45	644071	2,980	VV
5	10,93	1977175	9,149	VV
6	13,68	54550	0,252	TBB
7	17,68	32975	0,153	BV
8	18,08	920187	4,258	VV
9	18,27	1624076	7,515	VV
10	18,43	816198	3,777	VV
11	18,77	2578421	11,931	VV
12	19,28	1408594	6,518	VV
13	20,21	94071	0,435	VV
14	21,09	913413	4,227	VV
15	21,28	893924	4,137	VV
16	21,73	2081298	9,631	VV
17	22,13	497453	2,302	VV
18	22,48	582395	2,695	VV
19	23,41	658253	3,046	VV
20	23,92	691741	3,201	VV
21	24,45	1438073	6,654	VV
22	24,96	589686	2,729	VV
23	25,52	312234	1,445	VV
24	26,99	458829	2,123	VV
25	28,61	592398	2,741	VB
		21610570	100,000	

Peak rejection level: 0

Channel 1 Noise: Not Measured

Channel 1 Drift: Not Measured

## Configuration parameters:

Interface Module: D-7000

Channel 1 Detector: L-7455

Column Oven: None

Pump A: L-7100

Number of Solvents pump A: 4

External Instrument Software: None

Gradient Mode: Low

Channel 2 Detector: None

Autosampler: L-7250

Pump B: None

Number of Solvents pump B: 1

Column Name: Orbit 100 C18

## Method Information:

Method Name: DAD2 Orbit

Description:

Developed by: JD

## Pump Setup:

Main Pump (A) Pressure Limit: 0 to 412 bar

## Pump A (L-7100):

Solvent A: ACN

Solvent C: Wasser

Solvent B: 0.1% TFA

Solvent D: THF

## Pump A (L-7100):

Pump Solvent and Event Table

Time (min)	%ACN	%0.1%	%Wasse	%THF	Flow (ml/min)	Event 1	Event 2	Event 3	Event 4
0,0	0,0	0,0	40,0	60,0	0,800				
15,0	0,0	0,0	10,0	90,0	0,800				
30,0	0,0	0,0	10,0	90,0	0,800				
40,0	0,0	0,0	40,0	60,0	0,800				

## Autosampler Setup (L-7250):

Syringe Speed: 3

Syringe Volume: 500 ul

Lead Volume: 30,00 ul

Needle Wash Strokes: 3

Injection Port Wash Stroke: 3

Needle Down Speed: Fast

Injection Method: Cut

Rear Volume: 30,00 ul

Needle Wash Speed: 5

Injection Port Wash Speed: 5

## Channel 1 Detector (L-7455):

Spectral Bandwidth: AUTO

Absorbance Mode: Normal(2.0AU)

Wavelength Range: 240 to 360 nm

Start Time: 0,00 min

Slit: 4 nm

Check Performance before Series Start: NO

Spectral Interval: 1600 ms

Auto Zero before Injection: YES

Monitoring Wavelength: 254 nm

Stop Time: 30,00 min

## Method DP for channel 1

## Calculation Method:

Calculation Method: AREA%

Peak identification Window: % Time

UNK peaks identification rule: Closest peak

Update RT in component Table: NO

Do library search: NO

Peak Quantitation: Area

Concentration data from method.

Do blank subtraction: NO

## Component Table

RT (min)	Window (%)	Func1	Func2	Func3	E-Conc	Tolerance (%)
-------------	---------------	-------	-------	-------	--------	------------------

0,01	10,00					
------	-------	--	--	--	--	--