

D-7000 HPLC System Manager Report

Analyzed: 18.09.13 14:40

Reported: 18.09.13 15:45

Processed: 18.09.13 15:10

Data Path: C:\Win32App\HSM\samples\DATA\2272\

Processing Method: DAD2 Nucleodur C18ec

System(acquisition): DAD 2

Series:2272

Application: Samples

Vial Number: 3

Sample Name: mcnfr -lim

Vial Type: UNK

Injection from this vial: 1 of 1

Volume: 10,0 ul

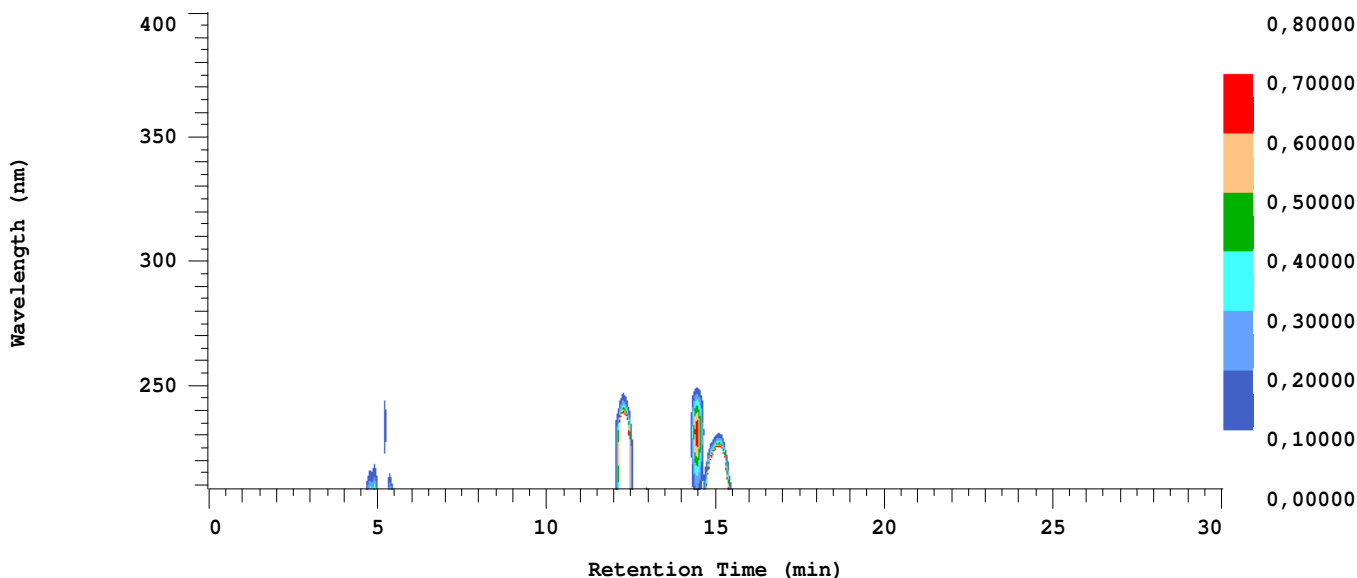
Sample Description:

Absorbance Mode: NORMAL(2.0 AU)

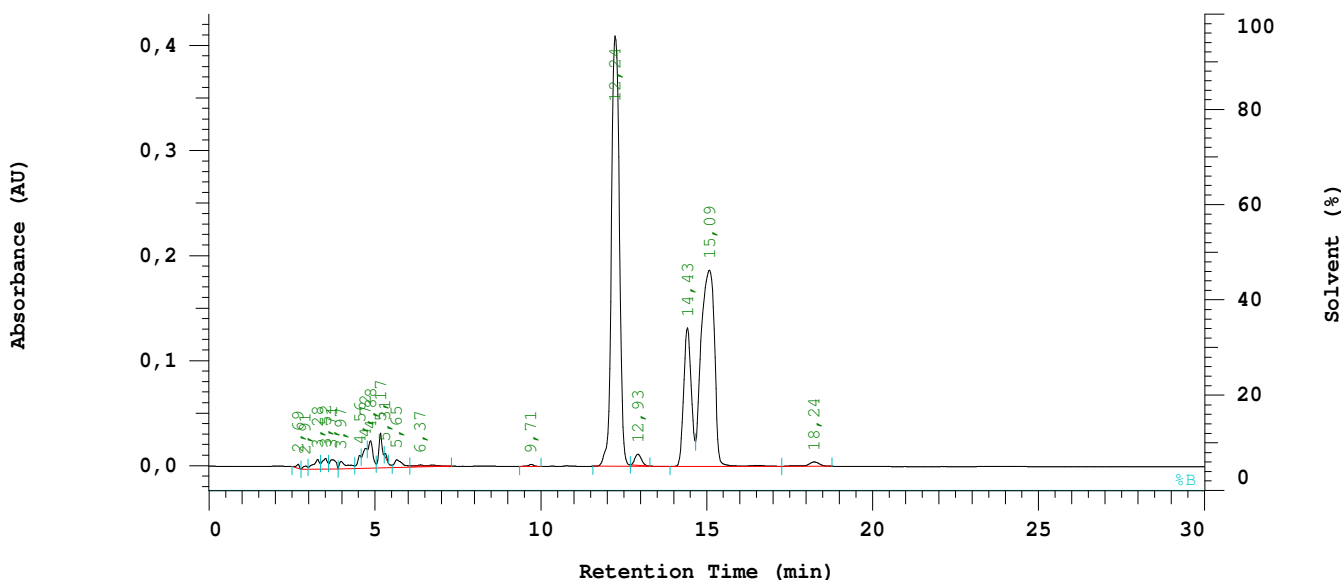
Absorbance Scale: 0.800

Spectral Bandwidth: AUTO

Spectral Interval: 1600 ms



Chrom Type: Integrated Chromatogram, 209 to 400 nm



Acquisition Method: DAD2 Nucleodur C18ec

Column Type: MN Nucleodur 100-5 C18ec Developed by:

Pump A Type: L-7100

Solvent A: ACN

Solvent B: 0.1% TFA

Solvent C: Wasser20

Solvent D: 0

Method Description:

Chrom Type: Integrated Chromatogram, 209 to 400 nm

Peak Quantitation: AREA

Calculation Method: AREA%

No.	RT	Area	Conc 1	BC
1	2,69	14078	0,176	BB
2	2,91	13607	0,170	BV
3	3,28	58094	0,728	VV
4	3,52	55926	0,701	VV
5	3,71	60726	0,761	VB
6	3,97	59108	0,740	BV
7	4,56	38282	0,480	VV
8	4,72	85736	1,074	VV
9	4,88	134501	1,685	VV
10	5,17	164720	2,063	VV
11	5,31	11362	0,142	TBB
12	5,65	83315	1,044	VV
13	6,37	12874	0,161	TBB
14	9,71	10614	0,133	BB
15	12,24	3405197	42,654	BV
16	12,93	75317	0,943	TBB
17	14,43	1037634	12,998	BV
18	15,09	2611268	32,710	VB
19	18,24	50840	0,637	BB
		7983199	100,000	

Peak rejection level: 0

Channel 1 Noise: Not Measured

Channel 1 Drift: Not Measured

Configuration parameters:

Interface Module: D-7000

Channel 1 Detector: L-7455

Column Oven: None

Pump A: L-7100

Number of Solvents pump A: 4

External Instrument Software: None

Gradient Mode: Low

Channel 2 Detector: None

Autosampler: L-7250

Pump B: None

Number of Solvents pump B: 1

Column Name: MN Nucleodur 100-5 C18ec

Method Information:

Method Name: DAD2 Nucleodur C18ec

Description:

Developed by:

Pump Setup:

Main Pump (A) Pressure Limit: 0 to 412 bar

Pump A (L-7100):

Solvent A: ACN

Solvent C: Wasser20

Solvent B: 0.1% TFA

Solvent D: 0

Pump A (L-7100):

Pump Solvent and Event Table

Time (min)	%ACN	%0.1%	%Wasse	%0	Flow (ml/min)	Event 1	Event 2	Event 3	Event 4
0,0	90,0	0,0	10,0	0,0	0,800				

Autosampler Setup (L-7250):

Syringe Speed: 3

Syringe Volume: 500 ul

Lead Volume: 30,00 ul

Needle Wash Strokes: 3

Injection Port Wash Stroke: 3

Needle Down Speed: Fast

Injection Method: Cut

Rear Volume: 30,00 ul

Needle Wash Speed: 5

Injection Port Wash Speed: 5

Channel 1 Detector (L-7455):

Spectral Bandwidth: AUTO

Absorbance Mode: Normal(2.0AU)

Wavelength Range: 210 to 400 nm

Start Time: 0,00 min

Slit: 4 nm

Check Performance before Series Start: NO

Spectral Interval: 1600 ms

Auto Zero before Injection: YES

Monitoring Wavelength: 220 nm

Stop Time: 30,00 min

Method DP for channel 1

Calculation Method:

Calculation Method: AREA%

Peak identification Window: % Time

UNK peaks identification rule: Closest peak

Update RT in component Table: NO

Do library search: NO

Peak Quantitation: Area

Concentration data from method.

Do blank subtraction: NO

Component Table

RT (min)	Window (%)	Func1	Func2	Func3	E-Conc	Tolerance (%)
0,01	10,00					