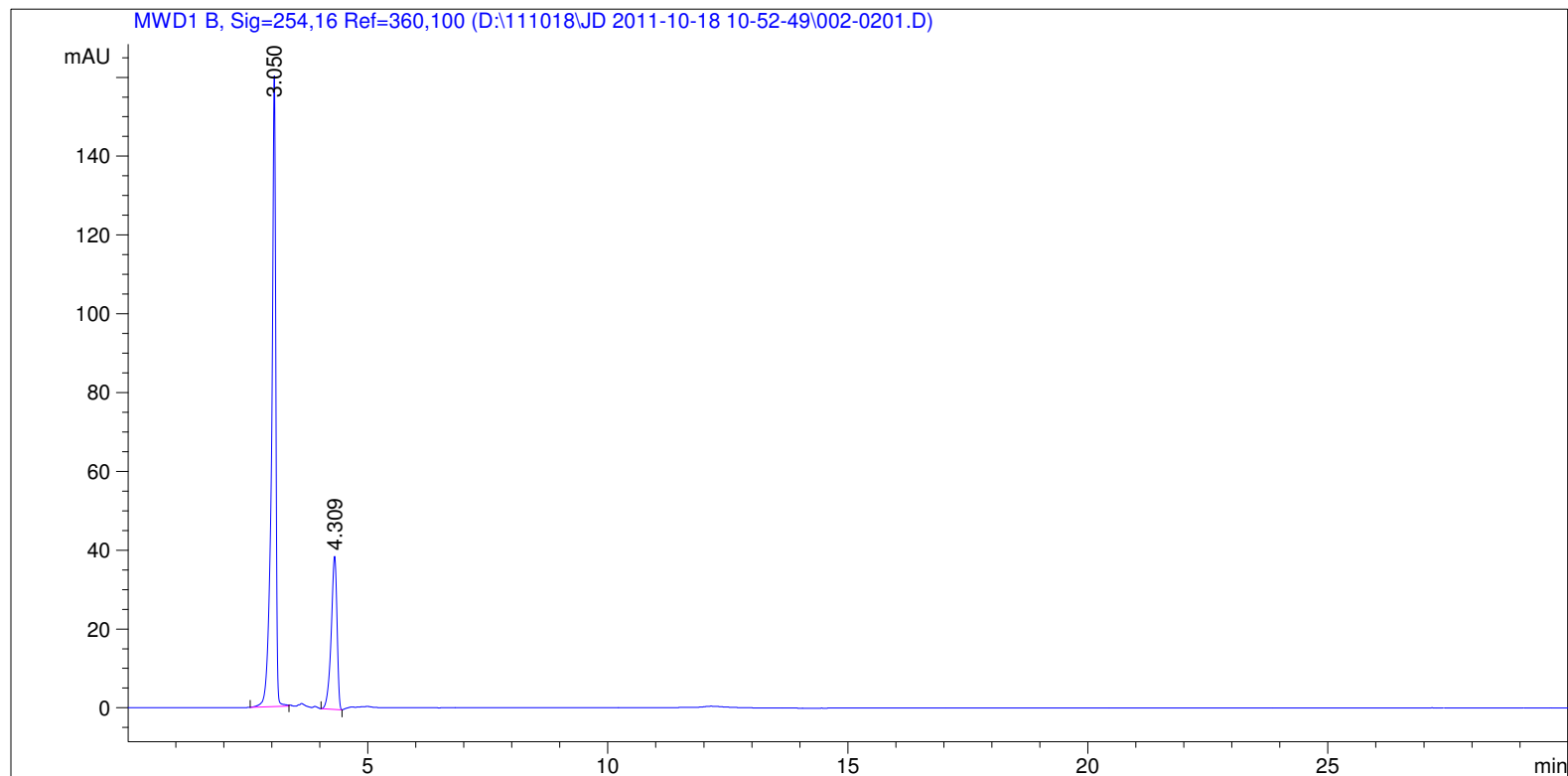


=====
Acq. Operator : I.H.B. - Agilent Installation Seq. Line : 2
Acq. Instrument : Instrument 1 Location : Vial 2
Injection Date : 10/18/2011 11:26:31 AM Inj : 1
Inj Volume : 10 µl
Acq. Method : D:\111018\JD 2011-10-18 10-52-49\KROMASIL.M
Last changed : 10/18/2011 10:35:34 AM by I.H.B. - Agilent Installation
Analysis Method : D:\111018\JD 2011-10-18 10-52-49\KROMASIL.M
Last changed : 10/18/2011 1:10:32 PM by I.H.B. - Agilent Installation
(modified after loading)
Method Info : Kromasil Sil 60 95% Hexan 5% IPA, Flow 1ml/min, 254nm



=====
Area Percent Report
=====

Sorted By : Signal
Multiplier : 1.0000
Dilution : 1.0000
Use Multiplier & Dilution Factor with ISTDs

Signal 1: MWD1 B, Sig=254,16 Ref=360,100

Peak #	RetTime [min]	Type	Width [min]	Area [mAU*s]	Height [mAU]	Area %
1	3.050	BB	0.0890	974.24884	160.18924	74.8145
2	4.309	VV	0.1283	327.97089	38.91802	25.1855

Totals : 1302.21973 199.10726

=====
*** End of Report ***