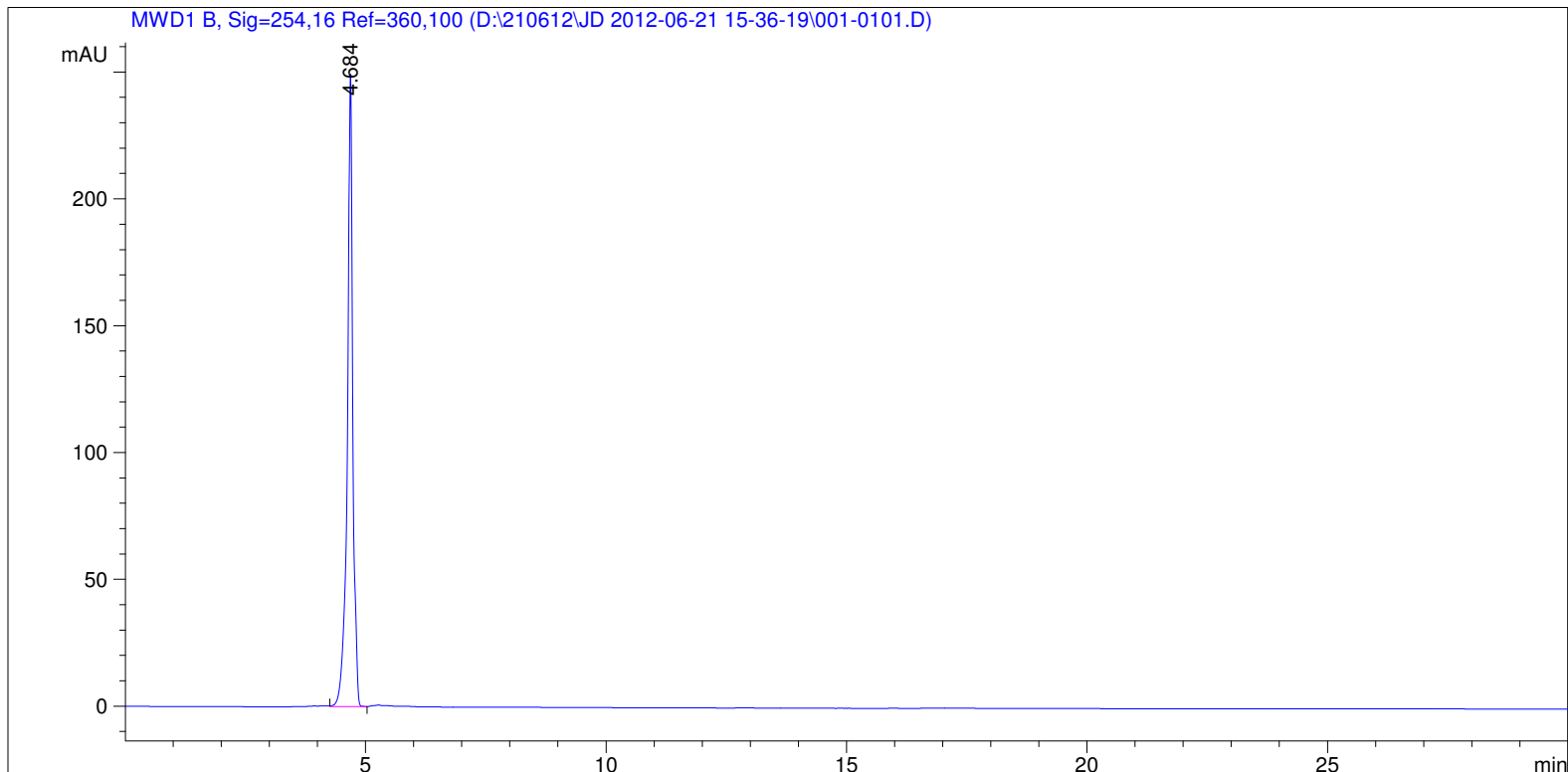


=====
Acq. Operator : I.H.B. - Agilent Installation Seq. Line : 1
Acq. Instrument : Instrument 1 Location : Vial 1
Injection Date : 6/21/2012 3:36:35 PM Inj : 1
Inj Volume : 5 µl
Acq. Method : D:\210612\JD 2012-06-21 15-36-19\KROMASIL.M
Last changed : 6/21/2012 2:39:04 PM by I.H.B. - Agilent Installation
Analysis Method : D:\210612\JD 2012-06-21 15-36-19\KROMASIL.M
Last changed : 6/22/2012 7:20:26 AM by I.H.B. - Agilent Installation
Method Info : Kromasil Sil 60 99.9% Heptan 0.1% Ethanol, Flow 0.8ml/min, 254nm



=====
Area Percent Report
=====

Sorted By : Signal
Multiplier : 1.0000
Dilution : 1.0000
Use Multiplier & Dilution Factor with ISTDs

Signal 1: MWD1 B, Sig=254,16 Ref=360,100

Peak #	RetTime [min]	Type	Width [min]	Area [mAU*s]	Height [mAU]	Area %
1	4.684	BB	0.1066	1894.05798	249.26703	100.0000

Totals : 1894.05798 249.26703

=====
*** End of Report ***