

D-7000 HPLC System Manager Report

Analyzed: 26.08.14 10:17

Reported: 26.08.14 11:10

Processed: 26.08.14 11:10

Data Path: C:\Win32App\HSM\samples\DATA\2434\

Processing Method: DAD2 Orbit

System(acquisition): DAD 2

Series:2434

Application: Samples

Vial Number: 1

Sample Name: mcmk3cj1

Vial Type: UNK

Injection from this vial: 1 of 1

Volume: 10,0 ul

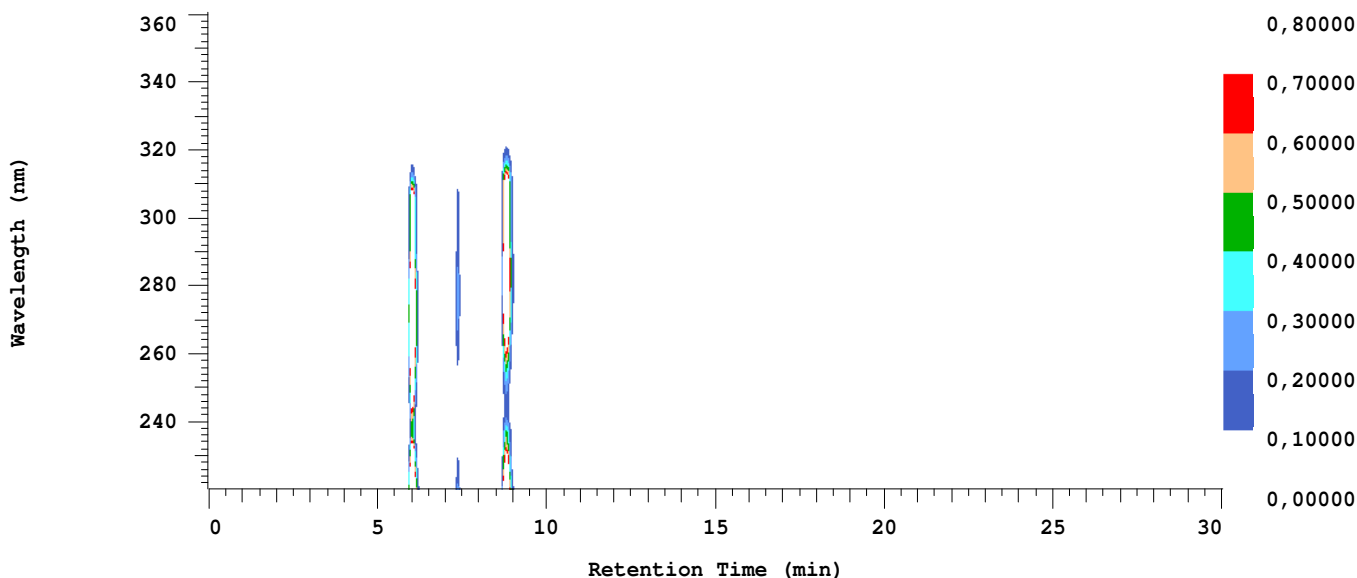
Sample Description:

Absorbance Mode: NORMAL(2.0 AU)

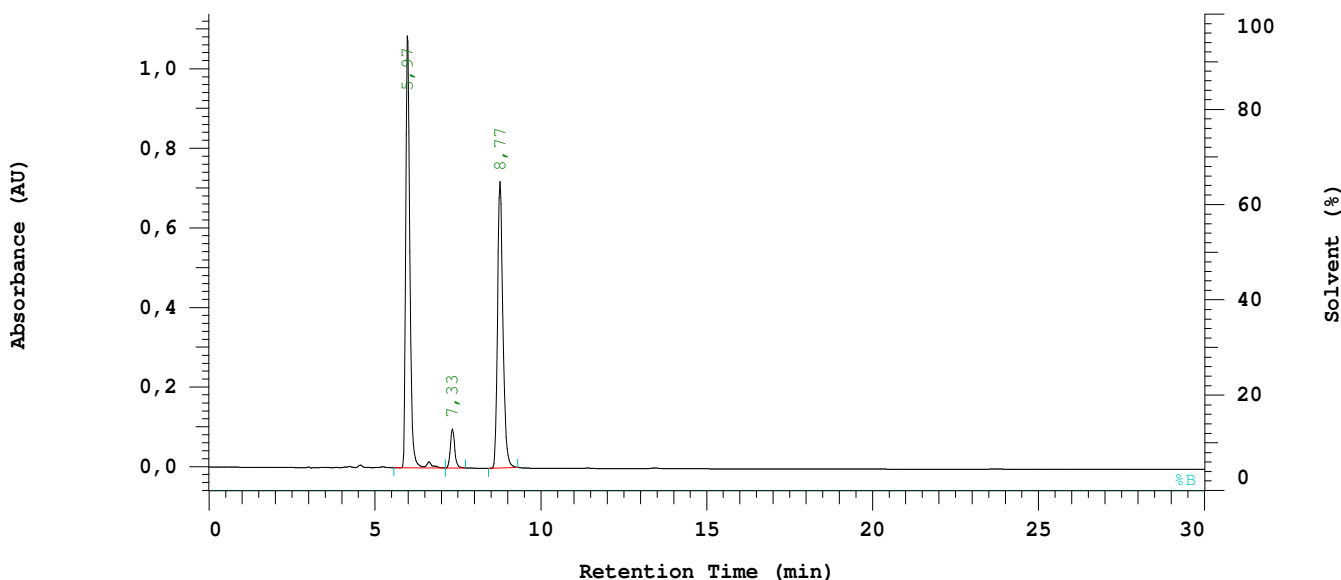
Absorbance Scale: 0.800

Spectral Bandwidth: AUTO

Spectral Interval: 1600 ms



Chrom Type: Integrated Chromatogram, 221 to 361 nm



Acquisition Method: DAD2 Orbit

Column Type: Orbit 100 C18

Developed by: JD

Pump A Type: L-7100

Solvent A: ACN

Solvent B: 0.1% TFA

Solvent C: Wasser

Solvent D: THF

Method Description:

Chrom Type: Integrated Chromatogram, 221 to 361 nm

Peak Quantitation: AREA

Calculation Method: AREA%

| No. | RT | Area | Conc 1 | BC |
|-----|------|---------|---------|----|
| 1 | 5,97 | 4751397 | 51,312 | BB |
| 2 | 7,33 | 458173 | 4,948 | BB |
| 3 | 8,77 | 4050336 | 43,741 | BB |
| | | 9259906 | 100,000 | |

Peak rejection level: 0

Channel 1 Noise: Not Measured
Channel 1 Drift: Not Measured

Configuration parameters:

| | |
|------------------------------------|------------------------------|
| Interface Module: D-7000 | Gradient Mode: Low |
| Channel 1 Detector: L-7455 | Channel 2 Detector: None |
| Column Oven: None | Autosampler: L-7250 |
| Pump A: L-7100 | Pump B: None |
| Number of Solvents pump A: 4 | Number of Solvents pump B: 1 |
| External Instrument Software: None | Column Name: Orbit 100 C18 |

Method Information:

| | |
|-------------------------|------------------|
| Method Name: DAD2 Orbit | Developed by: JD |
| Description: | |

Pump Setup:

Main Pump (A) Pressure Limit: 0 to 412 bar

Pump A (L-7100):

| | |
|-------------------|---------------------|
| Solvent A: ACN | Solvent B: 0.1% TFA |
| Solvent C: Wasser | Solvent D: THF |

Pump A (L-7100):

Pump Solvent and Event Table

| Time (min) | %ACN | %0.1% | %Wasse | %THF | Flow (ml/min) | Event 1 | Event 2 | Event 3 | Event 4 |
|------------|------|-------|--------|------|---------------|---------|---------|---------|---------|
| 0,0 | 95,0 | 0,0 | 5,0 | 0,0 | 0,800 | | | | |

Autosampler Setup (L-7250):

| | |
|-------------------------------|------------------------------|
| Syringe Speed: 3 | Needle Down Speed: Fast |
| Syringe Volume: 500 ul | Injection Method: Cut |
| Lead Volume: 30,00 ul | Rear Volume: 30,00 ul |
| Needle Wash Strokes: 3 | Needle Wash Speed: 5 |
| Injection Port Wash Stroke: 3 | Injection Port Wash Speed: 5 |

Channel 1 Detector (L-7455):

| | |
|---|---------------------------------|
| Spectral Bandwidth: AUTO | Spectral Interval: 1600 ms |
| Absorbance Mode: Normal(2.0AU) | Auto Zero before Injection: YES |
| Wavelength Range: 220 to 360 nm | Monitoring Wavelength: 254 nm |
| Start Time: 0,00 min | Stop Time: 40,00 min |
| Slit: 4 nm | |
| Check Performance before Series Start: NO | |

Method DP for channel 1

Calculation Method:

| | |
|---|---------------------------------|
| Calculation Method: AREA% | Peak Quantitation: Area |
| Peak identification Window: % Time | Concentration data from method. |
| UNK peaks identification rule: Closest peak | |
| Update RT in component Table: NO | Do blank subtraction: NO |
| Do library search: NO | |

Component Table

| RT (min) | Window (%) | Func1 | Func2 | Func3 | E-Conc | Tolerance (%) |
|----------|------------|-------|-------|-------|--------|---------------|
| 0,01 | 10,00 | | | | | |