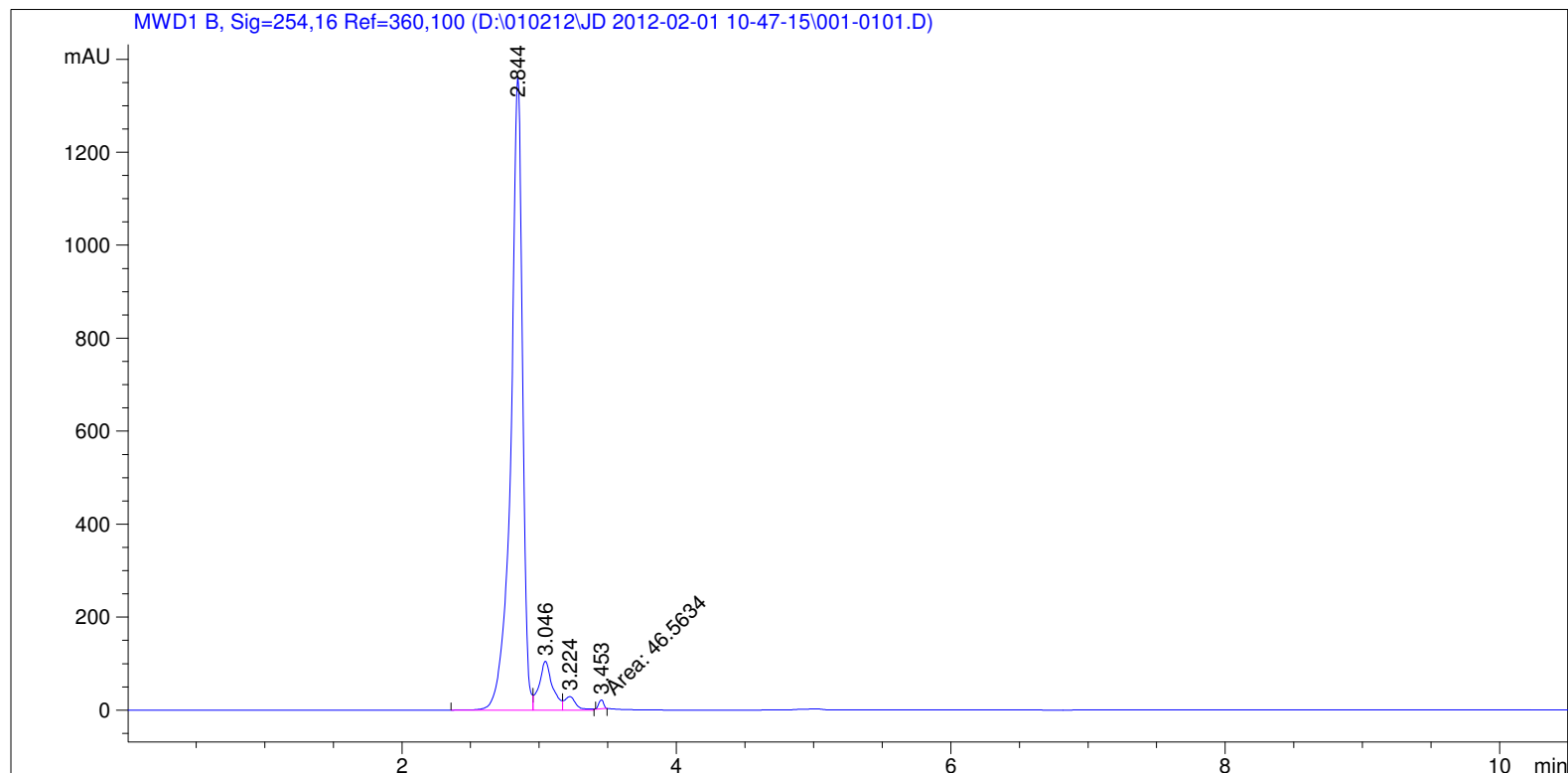


=====  
Acq. Operator : I.H.B. - Agilent Installation Seq. Line : 1  
Acq. Instrument : Instrument 1 Location : Vial 1  
Injection Date : 2/1/2012 10:47:30 AM Inj : 1  
Inj Volume : 10 µl  
Acq. Method : D:\010212\JD 2012-02-01 10-47-15\KROMASIL.M  
Last changed : 2/1/2012 10:42:23 AM by I.H.B. - Agilent Installation  
Analysis Method : D:\010212\JD 2012-02-01 10-47-15\KROMASIL.M  
Last changed : 2/1/2012 10:59:57 AM by I.H.B. - Agilent Installation  
Method Info : Kromasil Sil 60 98% Heptan 2% IPA, Flow 1ml/min, 254nm



=====  
Area Percent Report  
=====

Sorted By : Signal  
Multiplier : 1.0000  
Dilution : 1.0000  
Use Multiplier & Dilution Factor with ISTDs

Signal 1: MWD1 B, Sig=254,16 Ref=360,100

Peak #	RetTime [min]	Type	Width [min]	Area [mAU*s]	Height [mAU]	Area %
1	2.844	BV	0.0859	7928.81006	1363.33936	89.4324
2	3.046	VV	0.0954	716.67084	105.31580	8.0836
3	3.224	VV	0.0878	173.65907	29.03670	1.9588
4	3.453	MM	0.0406	46.56342	19.10176	0.5252

Totals : 8865.70338 1516.79362