

D-7000 HPLC System Manager Report

Analyzed: 06.05.14 14:53

Reported: 07.05.14 08:16

Processed: 07.05.14 08:15

Data Path: C:\Win32App\HSM\samples\DATA\2355\

Processing Method: DAD2 Orbit

System(acquisition): DAD 2

Series:2355

Application: Samples

Vial Number: 1

Sample Name: mcae11001

Vial Type: UNK

Injection from this vial: 1 of 1

Volume: 10,0 ul

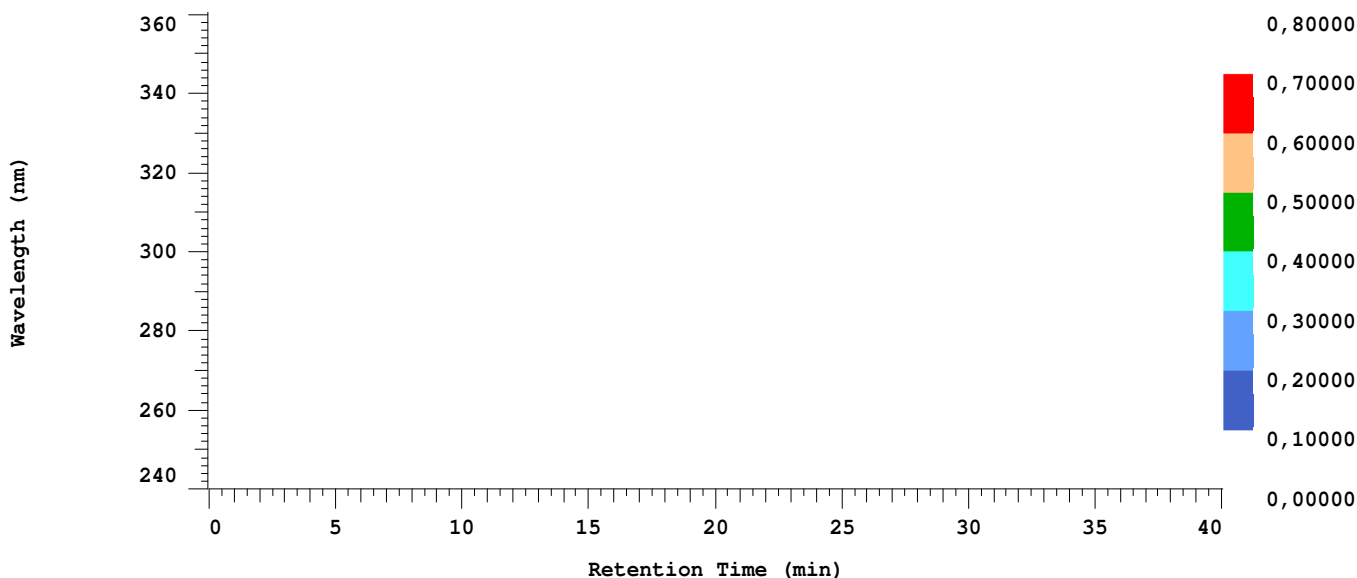
Sample Description:

Absorbance Mode: NORMAL(2.0 AU)

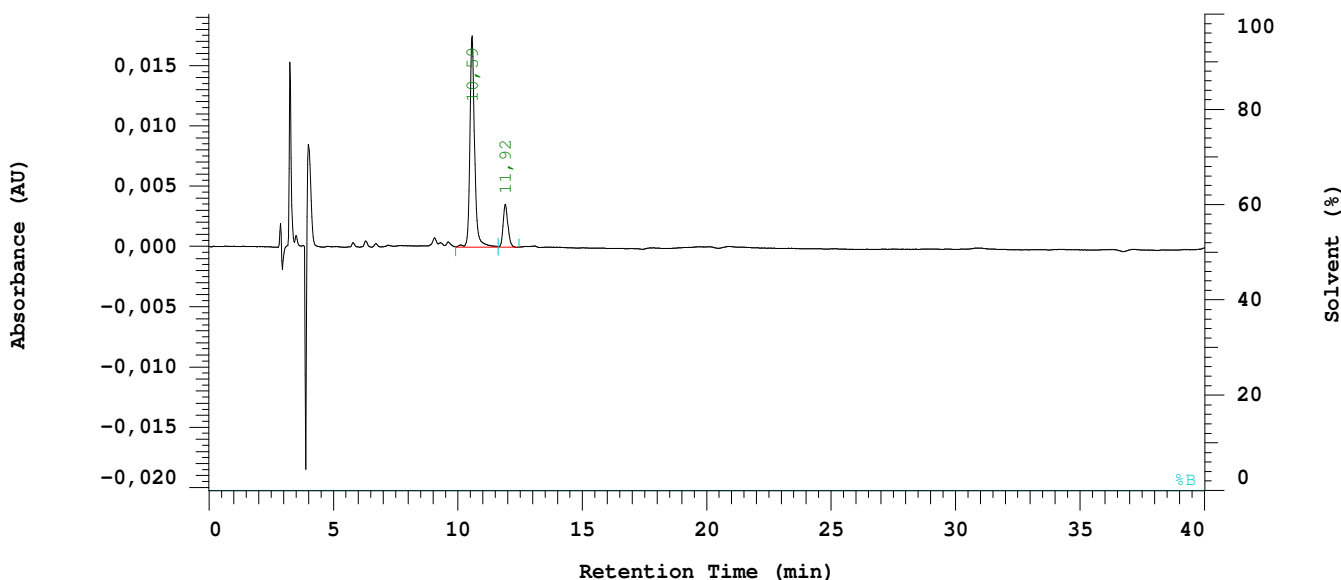
Absorbance Scale: 0.800

Spectral Bandwidth: AUTO

Spectral Interval: 1600 ms



Chrom Type: Integrated Chromatogram, 240 to 361 nm



Acquisition Method: DAD2 Orbit

Column Type: Orbit 100 C18

Developed by: JD

Pump A Type: L-7100

Solvent A: ACN

Solvent B: 0.1% TFA

Solvent C: Wasser

Solvent D: THF

Method Description:

Chrom Type: Integrated Chromatogram, 240 to 361 nm

Peak Quantitation: AREA

Calculation Method: AREA%

No.	RT	Area	Conc 1	BC
1	10,59	116499	82,939	BB
2	11,92	23964	17,061	BB
		140463	100,000	

Peak rejection level: 0

Channel 1 Noise: Not Measured
Channel 1 Drift: Not Measured

Configuration parameters:

Interface Module: D-7000	Gradient Mode: Low
Channel 1 Detector: L-7455	Channel 2 Detector: None
Column Oven: None	Autosampler: L-7250
Pump A: L-7100	Pump B: None
Number of Solvents pump A: 4	Number of Solvents pump B: 1
External Instrument Software: None	Column Name: Orbit 100 C18

Method Information:

Method Name: DAD2 Orbit	Developed by: JD
Description:	

Pump Setup:

Main Pump (A) Pressure Limit: 0 to 412 bar

Pump A (L-7100):

Solvent A: ACN	Solvent B: 0.1% TFA
Solvent C: Wasser	Solvent D: THF

Pump A (L-7100):

Pump Solvent and Event Table

Time (min)	%ACN	%0.1%	%Wasse	%THF	Flow (ml/min)	Event 1	Event 2	Event 3	Event 4
0,0	90,0	0,0	10,0	0,0	0,800				
40,0	90,0	0,0	10,0	0,0	0,800				

Autosampler Setup (L-7250):

Syringe Speed: 3	Needle Down Speed: Fast
Syringe Volume: 500 ul	Injection Method: Cut
Lead Volume: 30,00 ul	Rear Volume: 30,00 ul
Needle Wash Strokes: 3	Needle Wash Speed: 5
Injection Port Wash Stroke: 3	Injection Port Wash Speed: 5

Channel 1 Detector (L-7455):

Spectral Bandwidth: AUTO	Spectral Interval: 1600 ms
Absorbance Mode: Normal(2.0AU)	Auto Zero before Injection: YES
Wavelength Range: 240 to 360 nm	Monitoring Wavelength: 254 nm
Start Time: 0,00 min	Stop Time: 40,00 min
Slit: 4 nm	
Check Performance before Series Start: NO	

Method DP for channel 1

Calculation Method:

Calculation Method: AREA%	Peak Quantitation: Area
Peak identification Window: % Time	Concentration data from method.
UNK peaks identification rule: Closest peak	
Update RT in component Table: NO	Do blank subtraction: NO
Do library search: NO	

Component Table

RT (min)	Window (%)	Func1	Func2	Func3	E-Conc	Tolerance (%)
0,01	10,00					