

D-7000 HPLC System Manager Report

Analyzed: 06.05.15 14:38

Reported: 06.05.15 15:54

Processed: 06.05.15 15:53

Data Path: C:\Win32App\HSM\samples\DATA\2675\

Processing Method: DAD2 Orbit

System(acquisition): DAD 2

Series:2675

Application: Samples

Vial Number: 111

Sample Name: mcae10102 80 20

Vial Type: UNK

Injection from this vial: 1 of 1

Volume: 10,0 ul

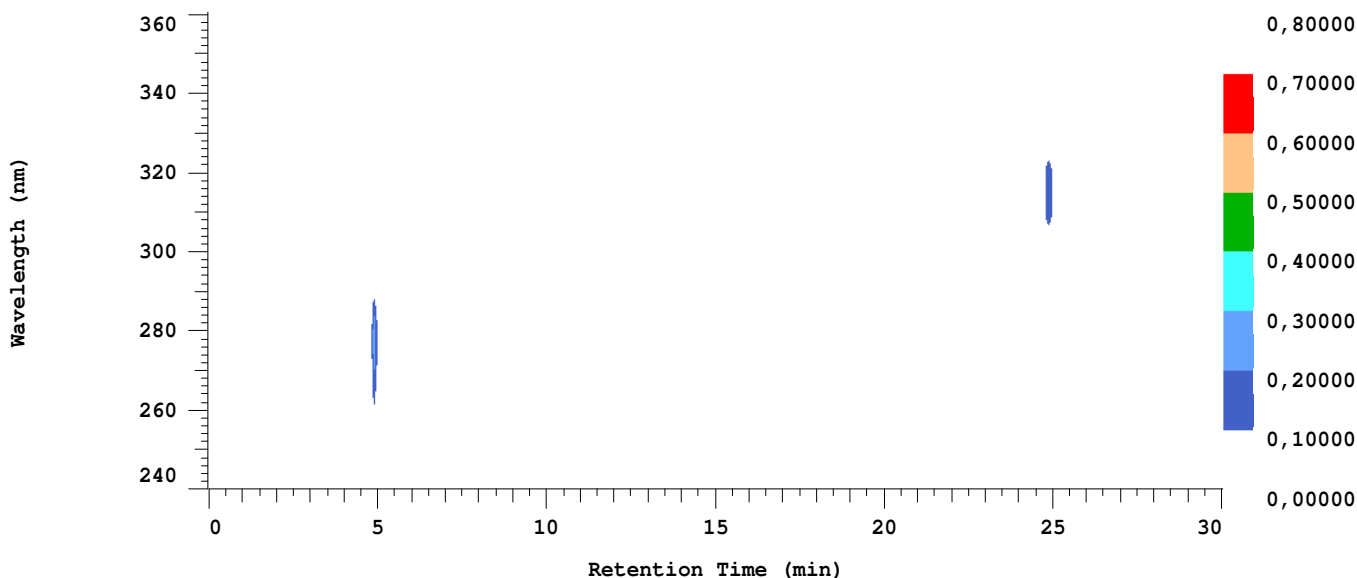
Sample Description:

Absorbance Mode: NORMAL(2.0 AU)

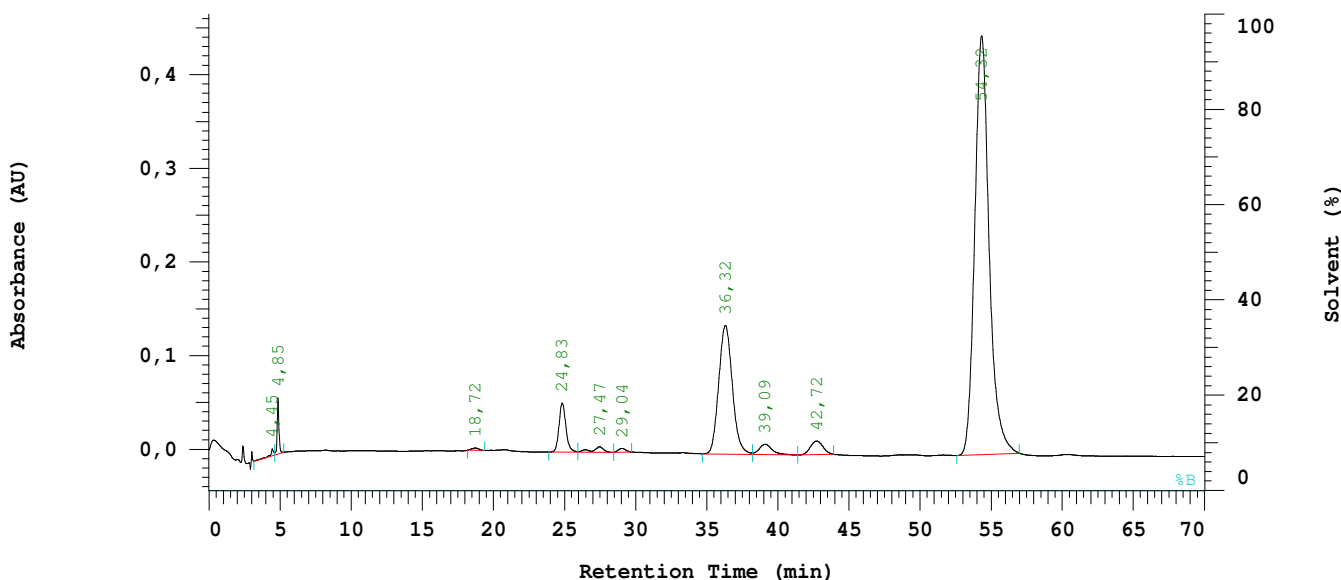
Absorbance Scale: 0.800

Spectral Bandwidth: AUTO

Spectral Interval: 1600 ms



Chrom Type: Integrated Chromatogram, 240 to 361 nm



Acquisition Method: DAD2 Orbit

Column Type: Orbit 100 C18

Developed by: JD

Pump A Type: L-7100

Solvent A: ACN

Solvent B: 0.1% TFA

Solvent C: Wasser

Solvent D: THF

Method Description:

Chrom Type: Integrated Chromatogram, 240 to 361 nm

Peak Quantitation: AREA

Calculation Method: AREA%

No.	RT	Area	Conc 1	BC
1	4,45	51009	0,227	BV
2	4,85	251112	1,116	VB
3	18,72	43609	0,194	BB
4	24,83	894578	3,977	BB
5	27,47	155428	0,691	BB
6	29,04	71005	0,316	BB
7	36,32	4551342	20,234	BB
8	39,09	347914	1,547	BB
9	42,72	442422	1,967	BB
10	54,32	15685278	69,732	BB
		22493697	100,000	

Peak rejection level: 0

Channel 1 Noise: Not Measured

Channel 1 Drift: Not Measured

Configuration parameters:

Interface Module: D-7000

Channel 1 Detector: L-7455

Column Oven: None

Pump A: L-7100

Number of Solvents pump A: 4

External Instrument Software: None

Gradient Mode: Low

Channel 2 Detector: None

Autosampler: L-7250

Pump B: None

Number of Solvents pump B: 1

Column Name: Orbit 100 C18

Method Information:

Method Name: DAD2 Orbit

Description:

Developed by: JD

Pump Setup:

Main Pump (A) Pressure Limit: 0 to 412 bar

Pump A (L-7100):

Solvent A: ACN

Solvent C: Wasser

Solvent B: 0.1% TFA

Solvent D: THF

Pump A (L-7100):

Pump Solvent and Event Table

Time (min)	%ACN	%0.1%	%Wasse	%THF	Flow (ml/min)	Event 1	Event 2	Event 3	Event 4
0,0	0,0	0,0	20,0	80,0	0,800				
70,0	0,0	0,0	20,0	80,0	0,800				

Autosampler Setup (L-7250):

Syringe Speed: 3

Syringe Volume: 500 ul

Lead Volume: 30,00 ul

Needle Wash Strokes: 3

Injection Port Wash Stroke: 3

Needle Down Speed: Fast

Injection Method: Cut

Rear Volume: 30,00 ul

Needle Wash Speed: 5

Injection Port Wash Speed: 5

Channel 1 Detector (L-7455):

Spectral Bandwidth: AUTO

Absorbance Mode: Normal(2.0AU)

Wavelength Range: 240 to 360 nm

Start Time: 0,00 min

Slit: 4 nm

Check Performance before Series Start: NO

Spectral Interval: 1600 ms

Auto Zero before Injection: YES

Monitoring Wavelength: 254 nm

Stop Time: 70,00 min

Method DP for channel 1

Calculation Method:

Calculation Method: AREA%

Peak identification Window: % Time

UNK peaks identification rule: Closest peak

Update RT in component Table: NO

Do library search: NO

Peak Quantitation: Area

Concentration data from method.

Do blank subtraction: NO

Component Table

RT (min)	Window (%)	Func1	Func2	Func3	E-Conc	Tolerance (%)
-------------	---------------	-------	-------	-------	--------	------------------

0,01	10,00					
------	-------	--	--	--	--	--