

D-7000 HPLC System Manager Report

Analyzed: 18.05.16 16:44

Reported: 19.05.16 09:17

Processed: 19.05.16 09:16

Data Path: C:\Win32App\HSM\samples\DATA\2820\

Processing Method: DAD2 Kromsasil RP 18

System(acquisition): DAD 2

Series:2820

Application: Samples

Vial Number: 1

Sample Name: blind3

Vial Type: UNK

Injection from this vial: 1 of 1

Volume: 10,0 ul

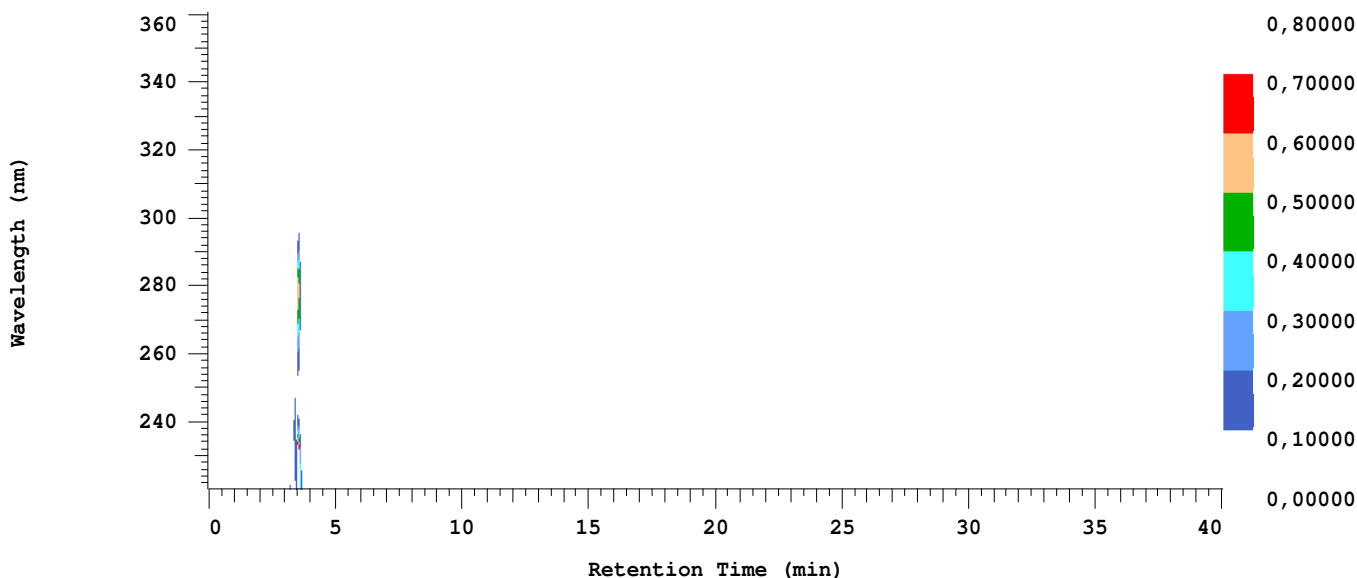
Sample Description:

Absorbance Mode: NORMAL(2.0 AU)

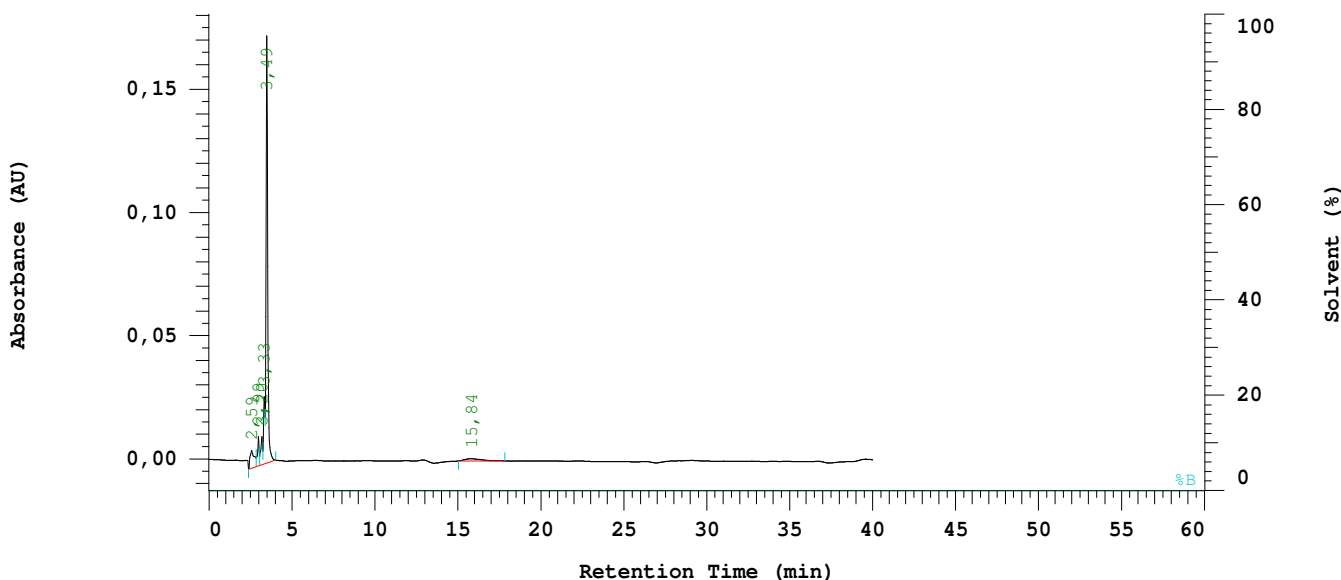
Absorbance Scale: 0.800

Spectral Bandwidth: AUTO

Spectral Interval: 1600 ms



Chrom Type: Integrated Chromatogram, 240 to 361 nm



Acquisition Method: DAD2 Orbit 90THF40min

Column Type: Orbit 100 C18

Developed by: JD

Pump A Type: L-7100

Solvent A: ACN

Solvent B: 0.1% TFA

Solvent C: Wasser

Solvent D: THF

Method Description: 90 % THF/ 10 % Wasser

Chrom Type: Integrated Chromatogram, 240 to 361 nm

Peak Quantitation: AREA

Calculation Method: AREA%

No.	RT	Area	Conc 1	BC
1	2,59	61830	7,442	BV
2	2,99	39000	4,694	VV
3	3,20	41454	4,990	VV
4	3,33	66153	7,963	VV
5	3,49	590141	71,032	VB
6	15,84	32228	3,879	BB
		830806	100,000	

Peak rejection level: 0

Channel 1 Noise: Not Measured

Channel 1 Drift: Not Measured

Configuration parameters:

Interface Module: D-7000

Channel 1 Detector: L-7455

Column Oven: None

Pump A: L-7100

Number of Solvents pump A: 4

External Instrument Software: None

Gradient Mode: Low

Channel 2 Detector: None

Autosampler: L-7250

Pump B: None

Number of Solvents pump B: 1

Column Name: Orbit 100 C18

Method Information:

Method Name: DAD2 Orbit 90THF40min

Developed by: JD

Description:

90 % THF/ 10 % Wasser

Pump Setup:

Main Pump (A) Pressure Limit: 0 to 412 bar

Pump A (L-7100):

Solvent A: ACN

Solvent B: 0.1% TFA

Solvent C: Wasser

Solvent D: THF

Pump A (L-7100):

Pump Solvent and Event Table

Time (min)	%ACN	%0.1%	%Wasse	%THF	Flow (ml/min)	Event 1	Event 2	Event 3	Event 4
0,0	0,0	0,0	10,0	90,0	0,800				
40,0	0,0	0,0	10,0	90,0	0,800				

Autosampler Setup (L-7250):

Syringe Speed: 3

Needle Down Speed: Fast

Syringe Volume: 500 ul

Injection Method: Cut

Lead Volume: 30,00 ul

Rear Volume: 30,00 ul

Needle Wash Strokes: 3

Needle Wash Speed: 5

Injection Port Wash Stroke: 3

Injection Port Wash Speed: 5

Channel 1 Detector (L-7455):

Spectral Bandwidth: AUTO

Spectral Interval: 1600 ms

Absorbance Mode: Normal(2.0AU)

Auto Zero before Injection: YES

Wavelength Range: 220 to 360 nm

Monitoring Wavelength: 254 nm

Start Time: 0,00 min

Stop Time: 40,00 min

Slit: 4 nm

Check Performance before Series Start: NO

Method DP for channel 1

Calculation Method:

Calculation Method: AREA%

Peak Quantitation: Area

Peak identification Window: % Time

Concentration data from method.

UNK peaks identification rule: Closest peak

Update RT in component Table: NO

Do blank subtraction: NO

Do library search: NO

Component Table

RT (min)	Window (%)	Func1	Func2	Func3	E-Conc	Tolerance (%)
-------------	---------------	-------	-------	-------	--------	------------------

0,01	10,00					
------	-------	--	--	--	--	--