

Area Percent Report

Data Path : D:\GCMS Daten\141007\
Data File : test141007_2.D
Acq On : 7 Oct 2014 10:23
Operator : JD
Sample : test141007
Misc :
ALS Vial : 149 Sample Multiplier: 1

Integration Parameters: autoint1.e
Integrator: ChemStation

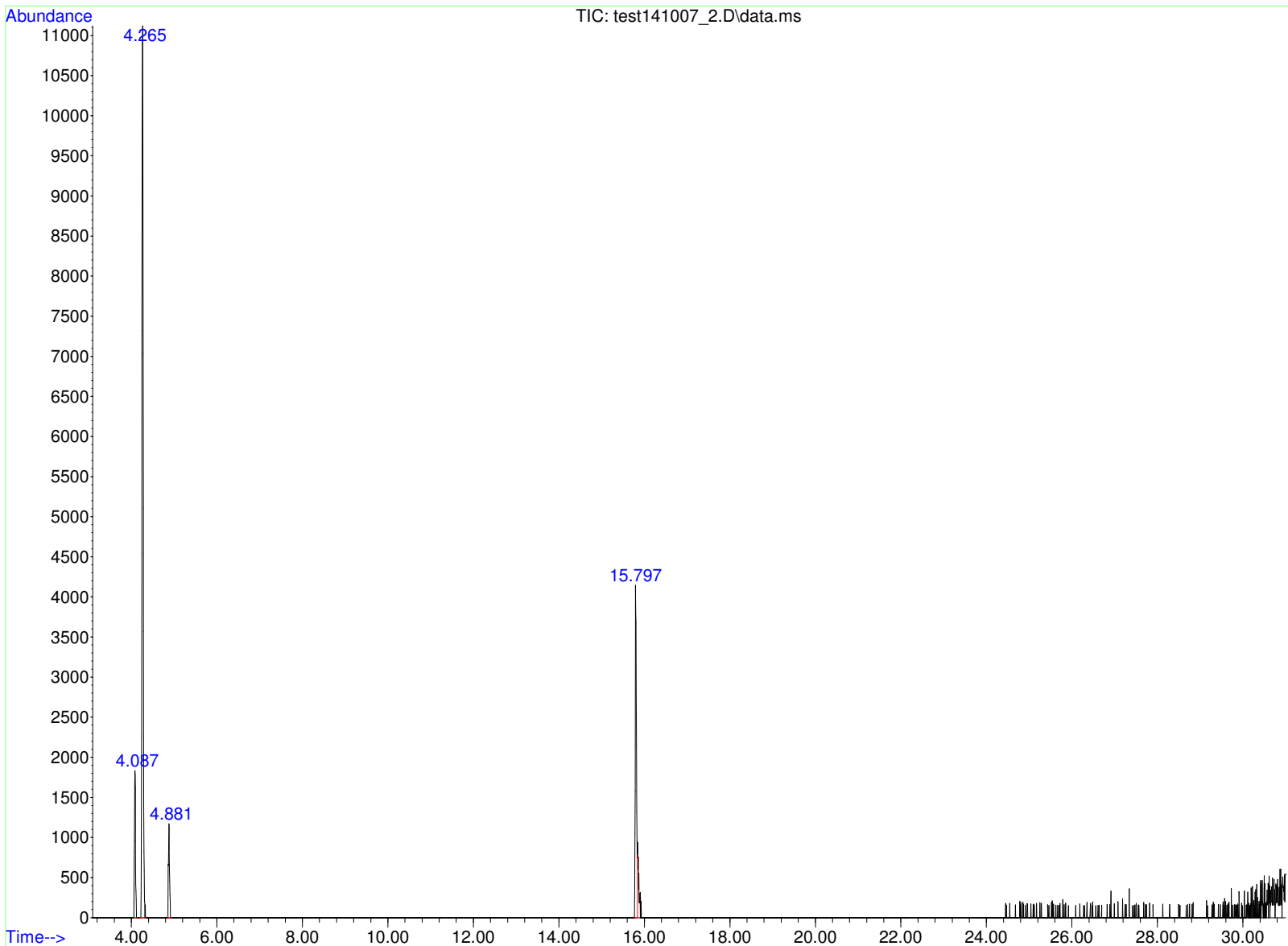
Method : D:\GCMS Daten\141001\oche357.D\STANDARD.M
Title :

Signal : TIC: test141007_2.D\data.ms

| peak # | R.T. min | first scan | max scan | last scan | PK TY | peak height | corr. area | corr. % max. | % of total |
|--------|----------|------------|----------|-----------|-------|-------------|------------|--------------|------------|
| 1 | 4.087 | 187 | 193 | 200 | BB 2 | 1827 | 32524 | 13.80% | 8.701% |
| 2 | 4.265 | 213 | 227 | 238 | BV 2 | 11129 | 235642 | 100.00% | 63.040% |
| 3 | 4.881 | 340 | 346 | 353 | BB 2 | 1163 | 21191 | 8.99% | 5.669% |
| 4 | 15.797 | 2444 | 2450 | 2458 | BV 2 | 4090 | 84440 | 35.83% | 22.590% |

Sum of corrected areas: 373797

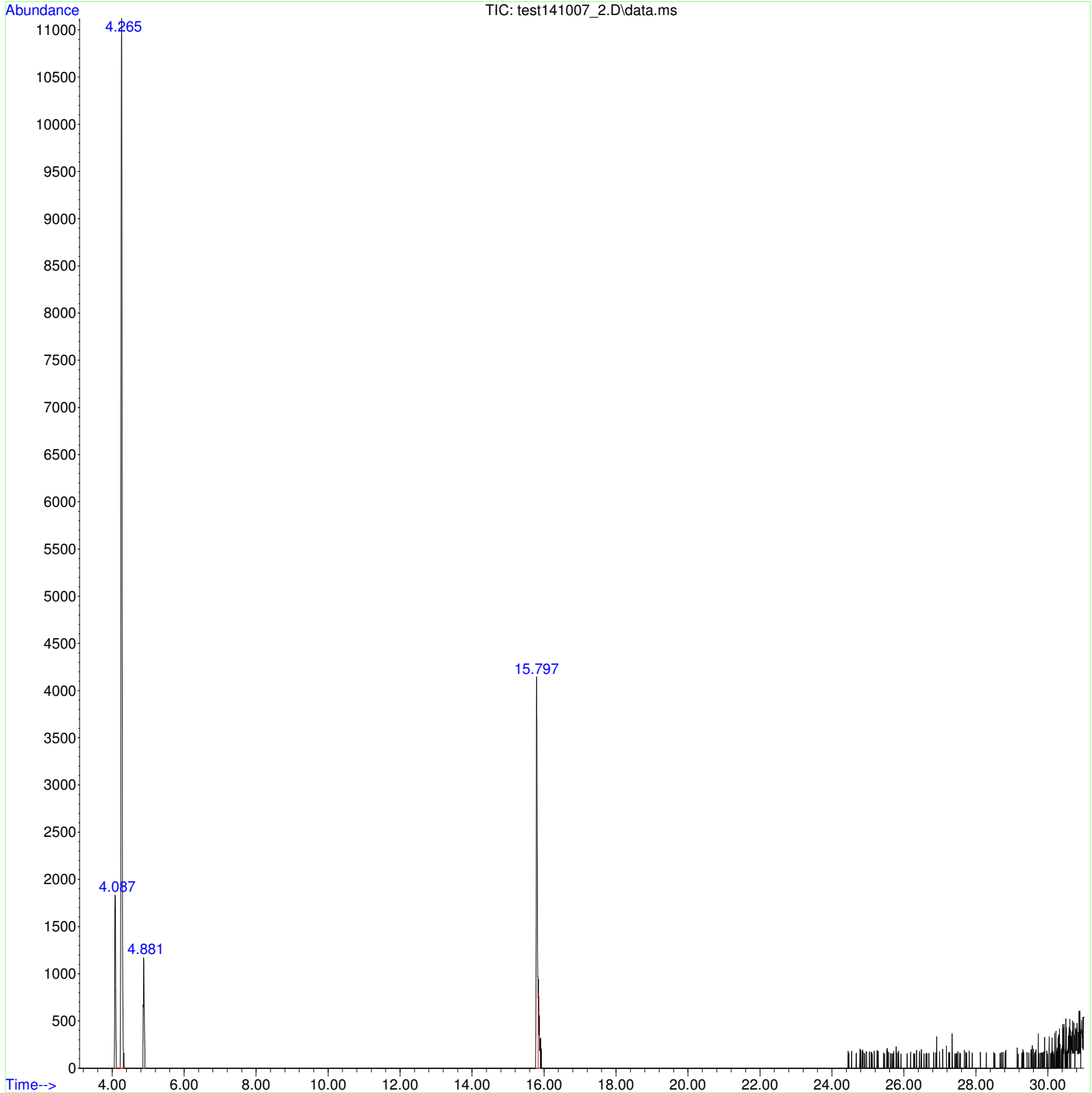
STANDARD.M Tue Oct 07 10:56:08 2014 GCMS



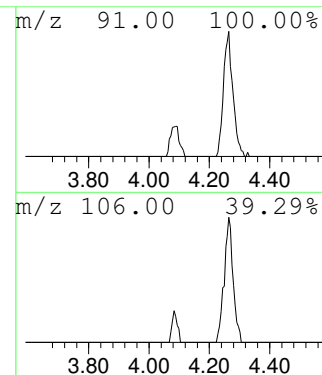
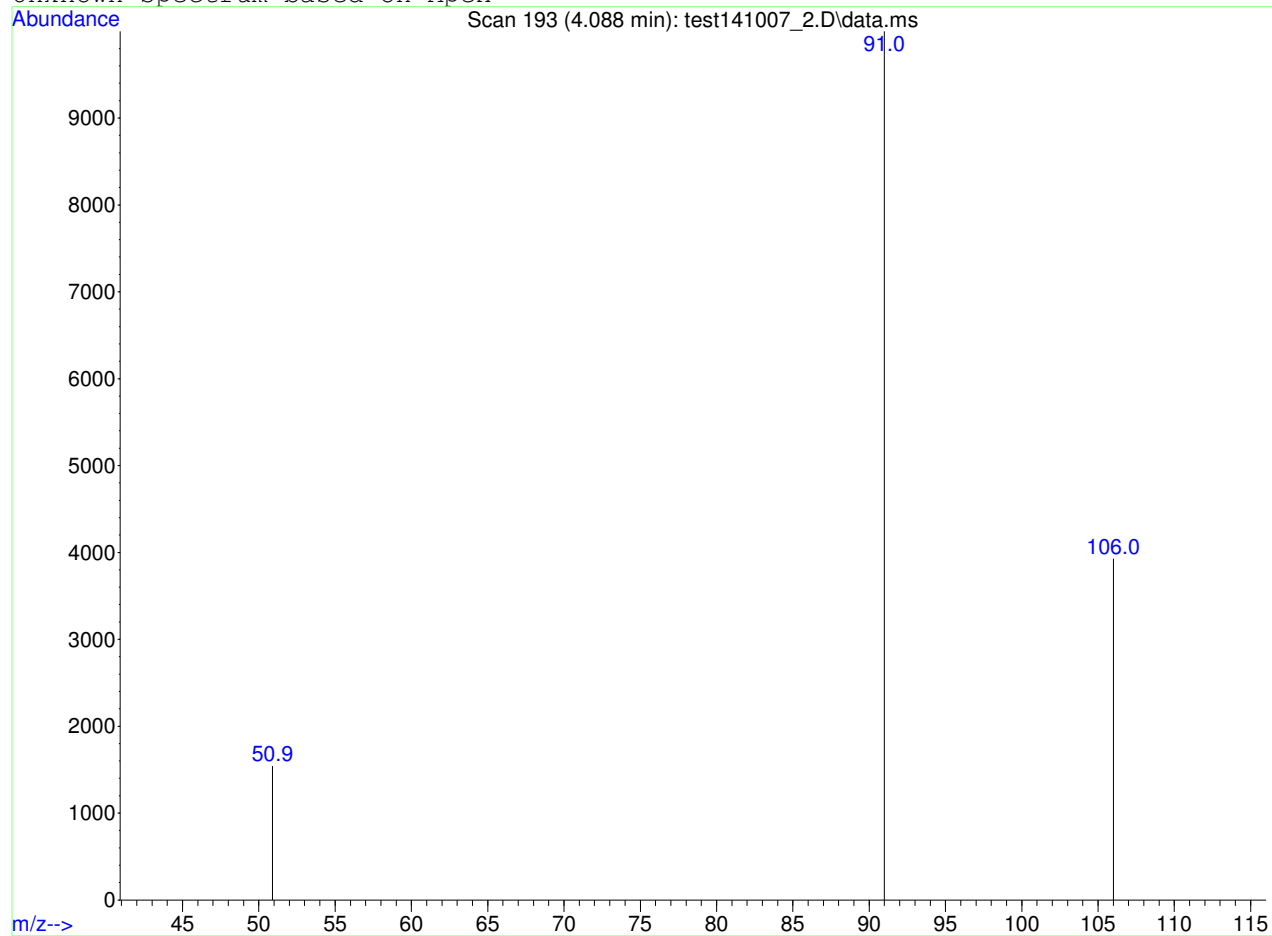
Data Path : D:\GCMS Daten\141007\
Data File : test141007_2.D
Acq On : 7 Oct 2014 10:23
Operator : JD
Sample : test141007
Misc :
ALS Vial : 149 Sample Multiplier: 1

Search Libraries: C:\DATABASE\DEMO.L Minimum Quality: 0

Unknown Spectrum: Apex
Integration Events: ChemStation Integrator - autoint1.e



Unknown Spectrum based on Apex



Data File: D:\GCMS Daten\141007\test141007_2.D

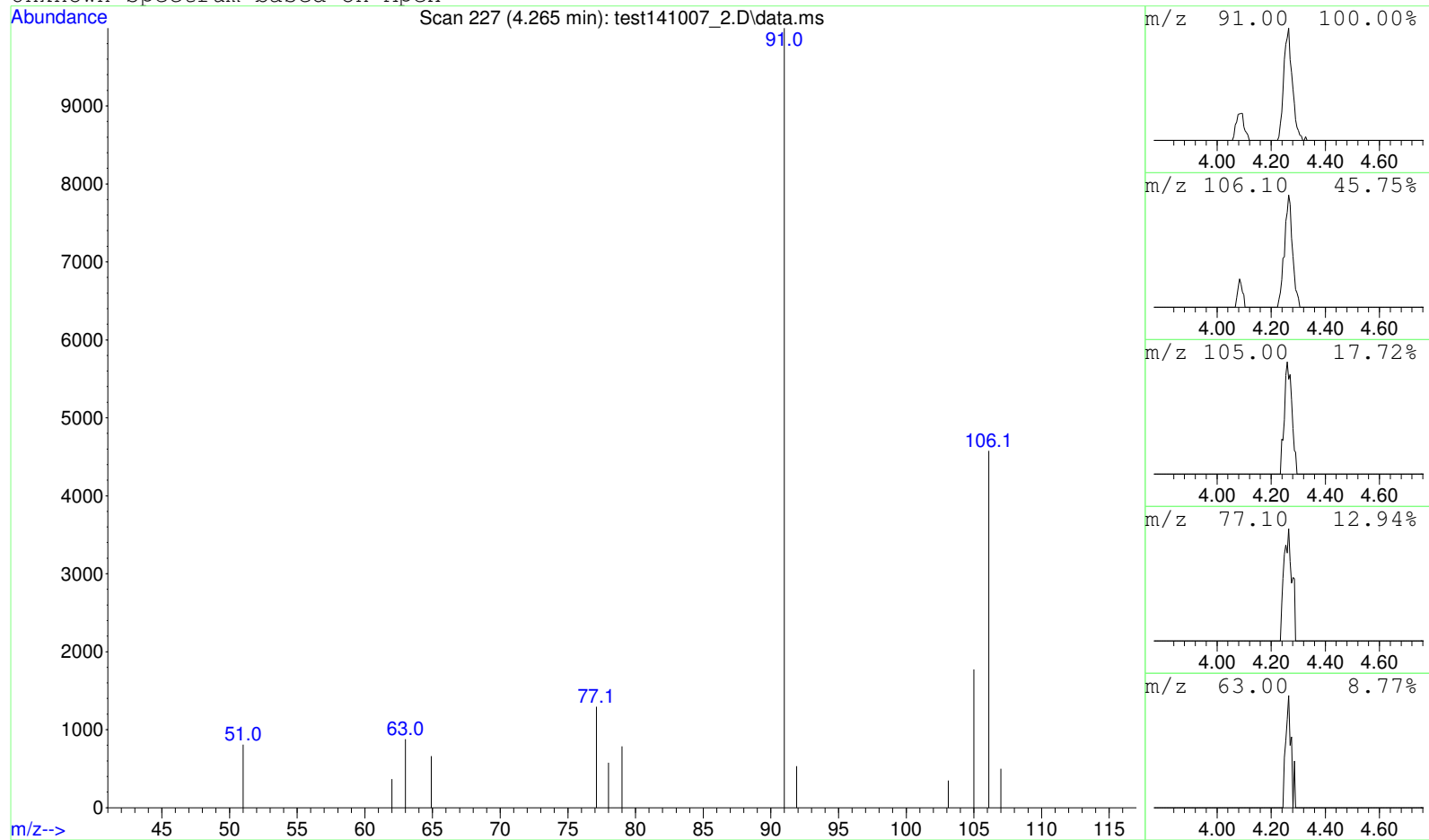
Sample : test141007

Peak Number: 1 at 4.088 min Area: 32524 Area % 8.70

The 3 best hits from each library. Ref\# CAS\# Qual

C:\DATABASE\DEMO.L No hits were retrieved.

Unknown Spectrum based on Apex



Data File: D:\GCMS Daten\141007\test141007_2.D

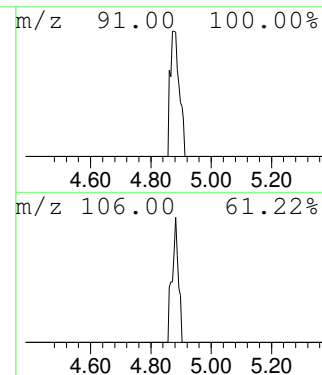
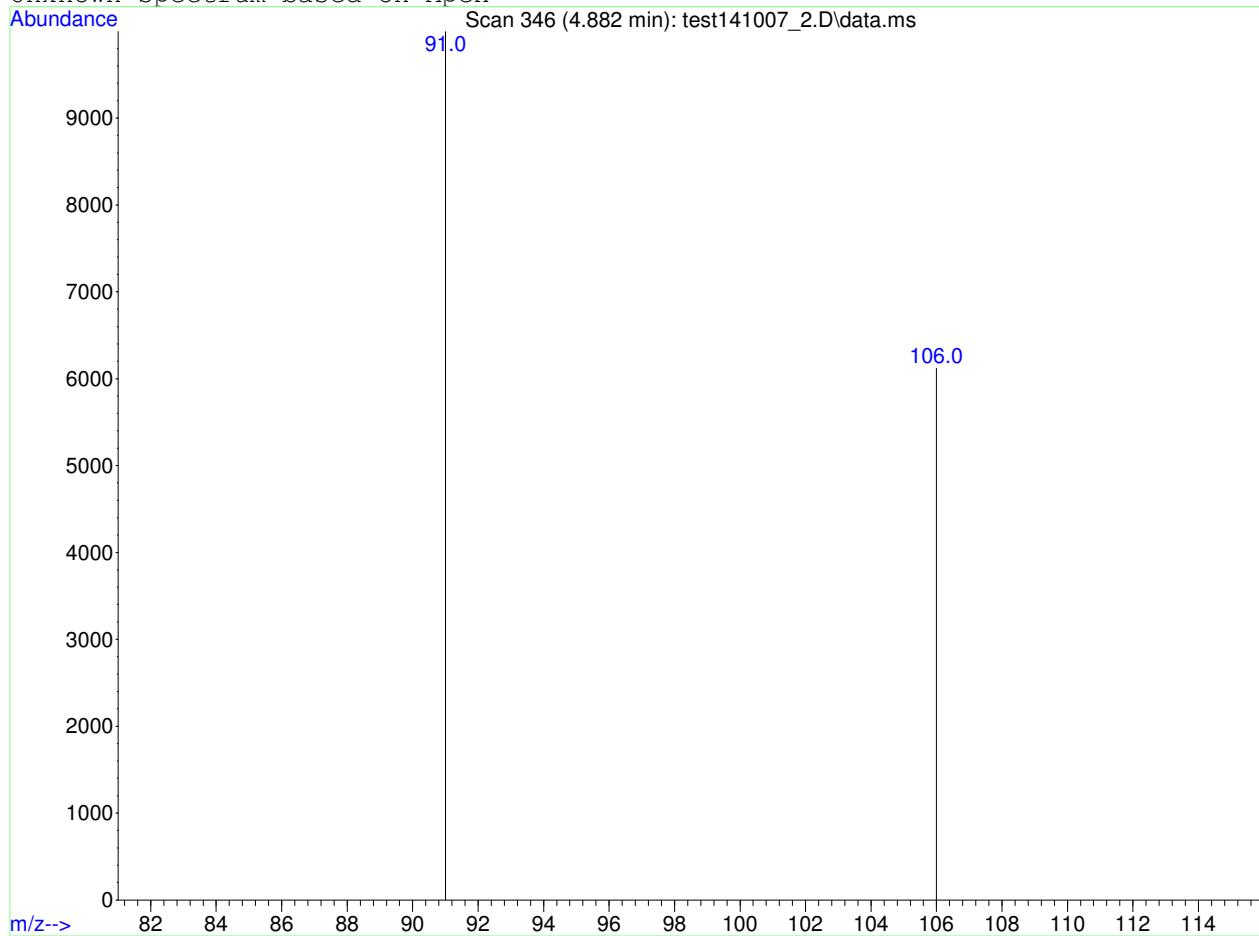
Sample : test141007

Peak Number: 2 at 4.265 min Area: 235642 Area % 63.04

The 3 best hits from each library. Ref\# CAS\# Qual

C:\DATABASE\DEMO.L No hits were retrieved.

Unknown Spectrum based on Apex



Data File: D:\GCMS Daten\141007\test141007_2.D

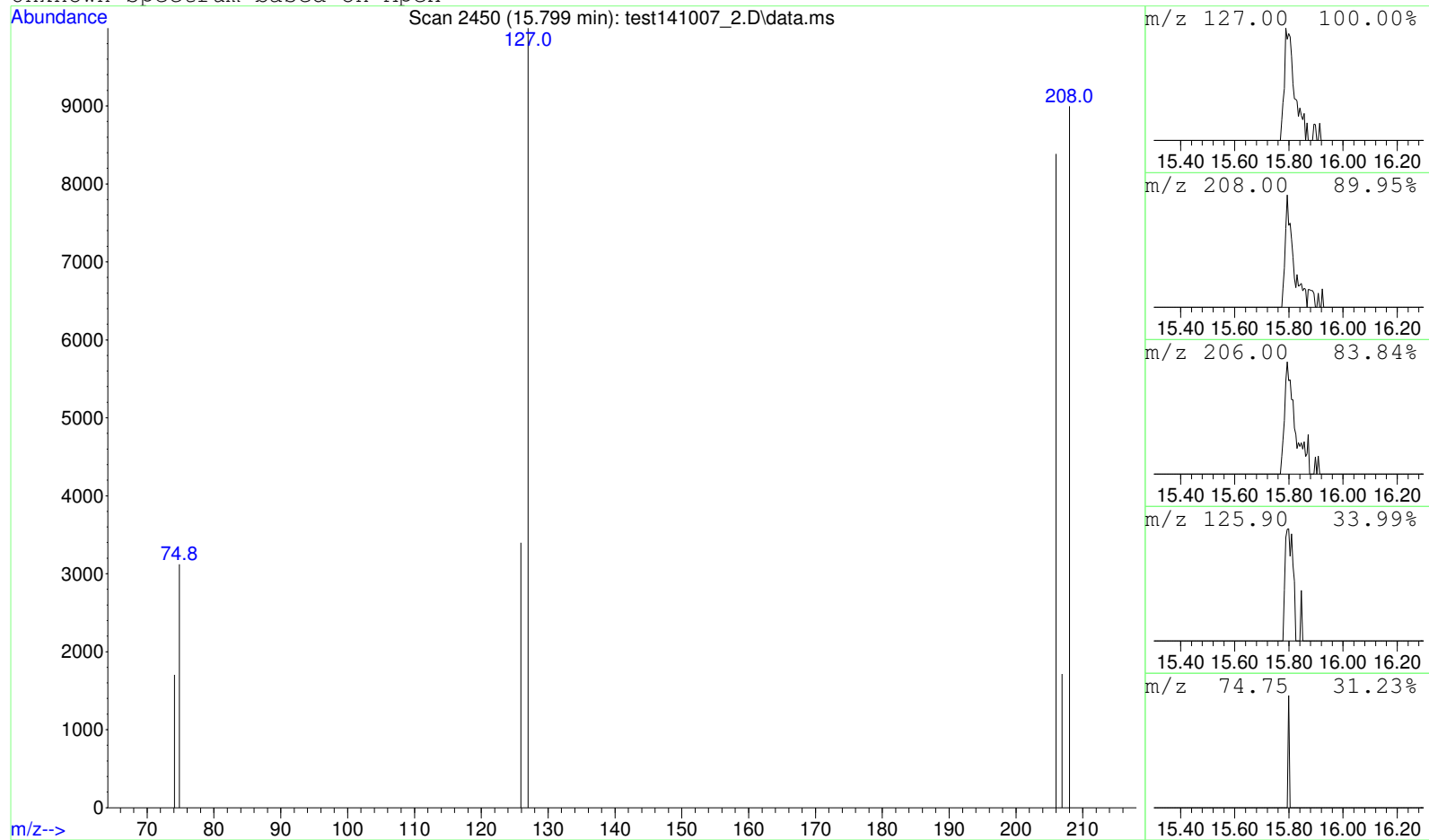
Sample : test141007

Peak Number: 3 at 4.882 min Area: 21191 Area % 5.67

The 3 best hits from each library. Ref\# CAS\# Qual

C:\DATABASE\DEMO.L No hits were retrieved.

Unknown Spectrum based on Apex



Data File: D:\GCMS Daten\141007\test141007_2.D

Sample : test141007

Peak Number: 4 at 15.799 min Area: 84440 Area % 22.59

The 3 best hits from each library. Ref\# CAS\# Qual

C:\DATABASE\DEMO.L No hits were retrieved.