

Area Percent Report

Data Path : D:\GCMS Daten\140821\
 Data File : test2_2.D
 Acq On : 21 Aug 2014 11:01
 Operator : JD
 Sample : test2
 Misc :
 ALS Vial : 91 Sample Multiplier: 1

Integration Parameters: autoint1.e
 Integrator: ChemStation

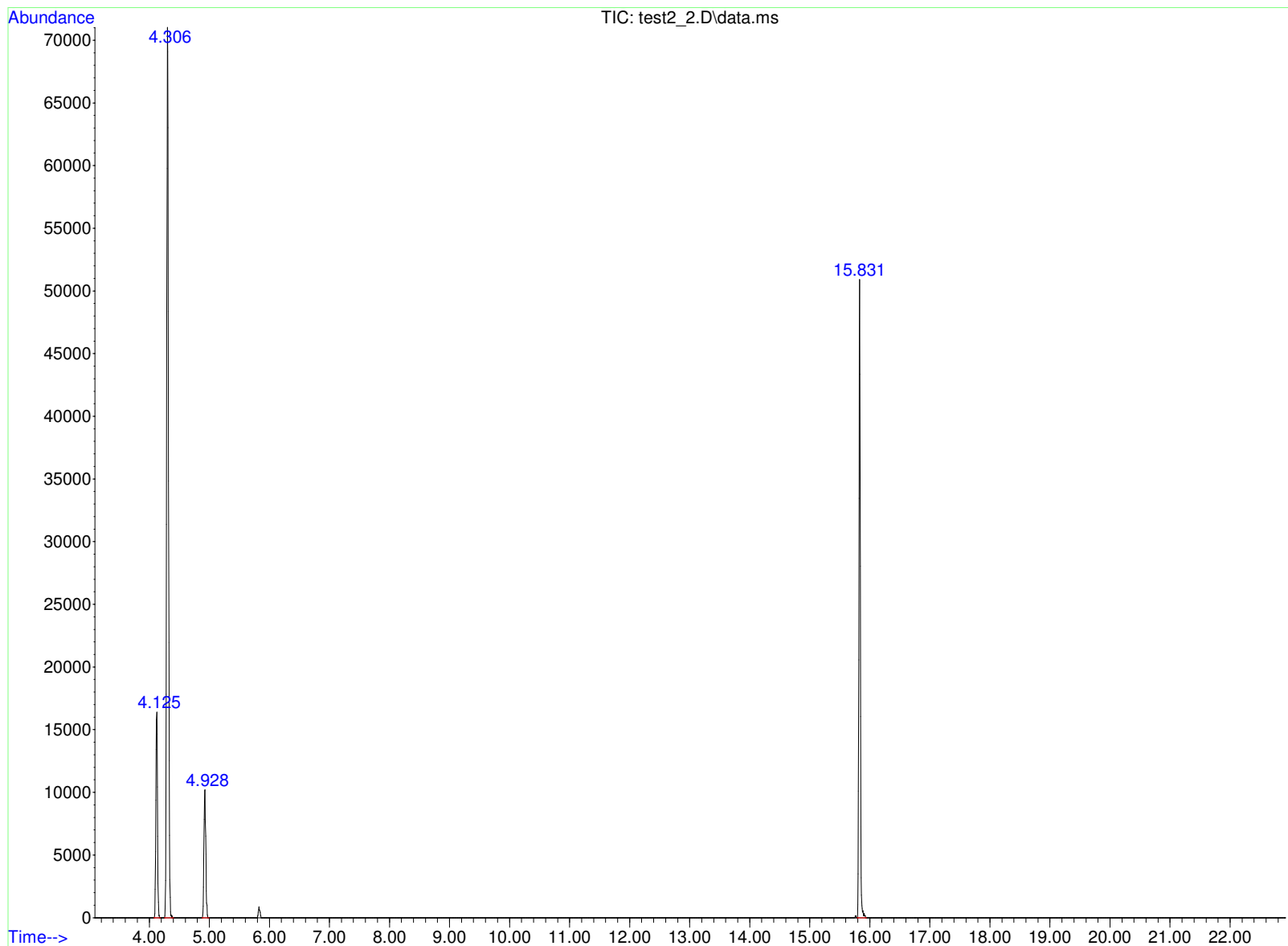
Method : D:\GCMS Daten\140724\ocfhv37.D\HOCHTEMP.M
 Title :

Signal : TIC: test2_2.D\data.ms

peak #	R.T. min	first scan	max scan	last scan	PK TY	peak height	corr. area	corr. % max.	% of total
1	4.125	192	200	210	BB 2	16220	309983	19.84%	10.565%
2	4.306	225	235	251	BB 2	70683	1562289	100.00%	53.249%
3	4.928	345	355	365	BB 2	10176	218469	13.98%	7.446%
4	15.831	2449	2456	2476	BB	50004	843212	53.97%	28.740%

Sum of corrected areas: 2933953

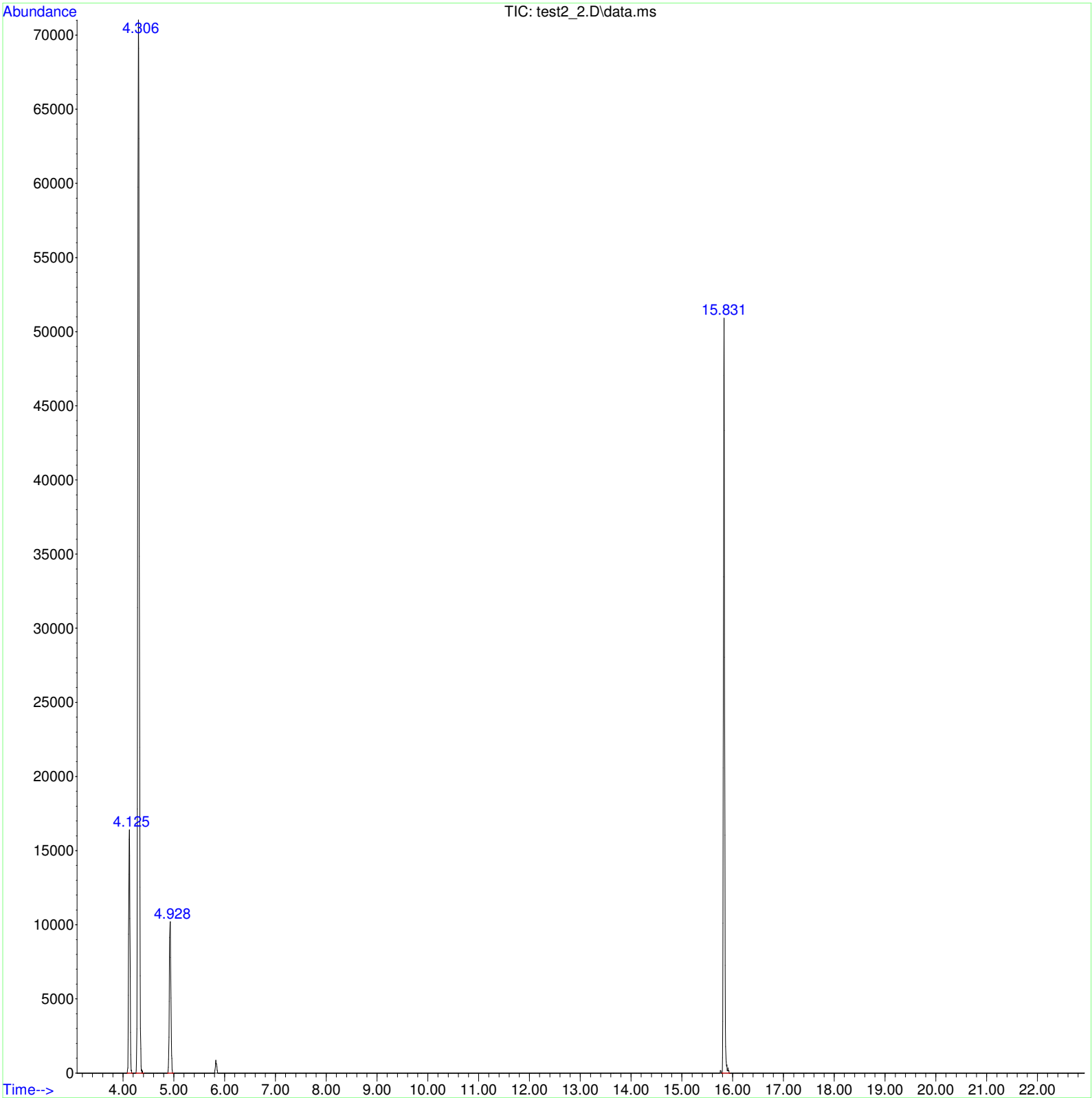
HOCHTEMP.M Thu Aug 21 11:25:43 2014 GCMS



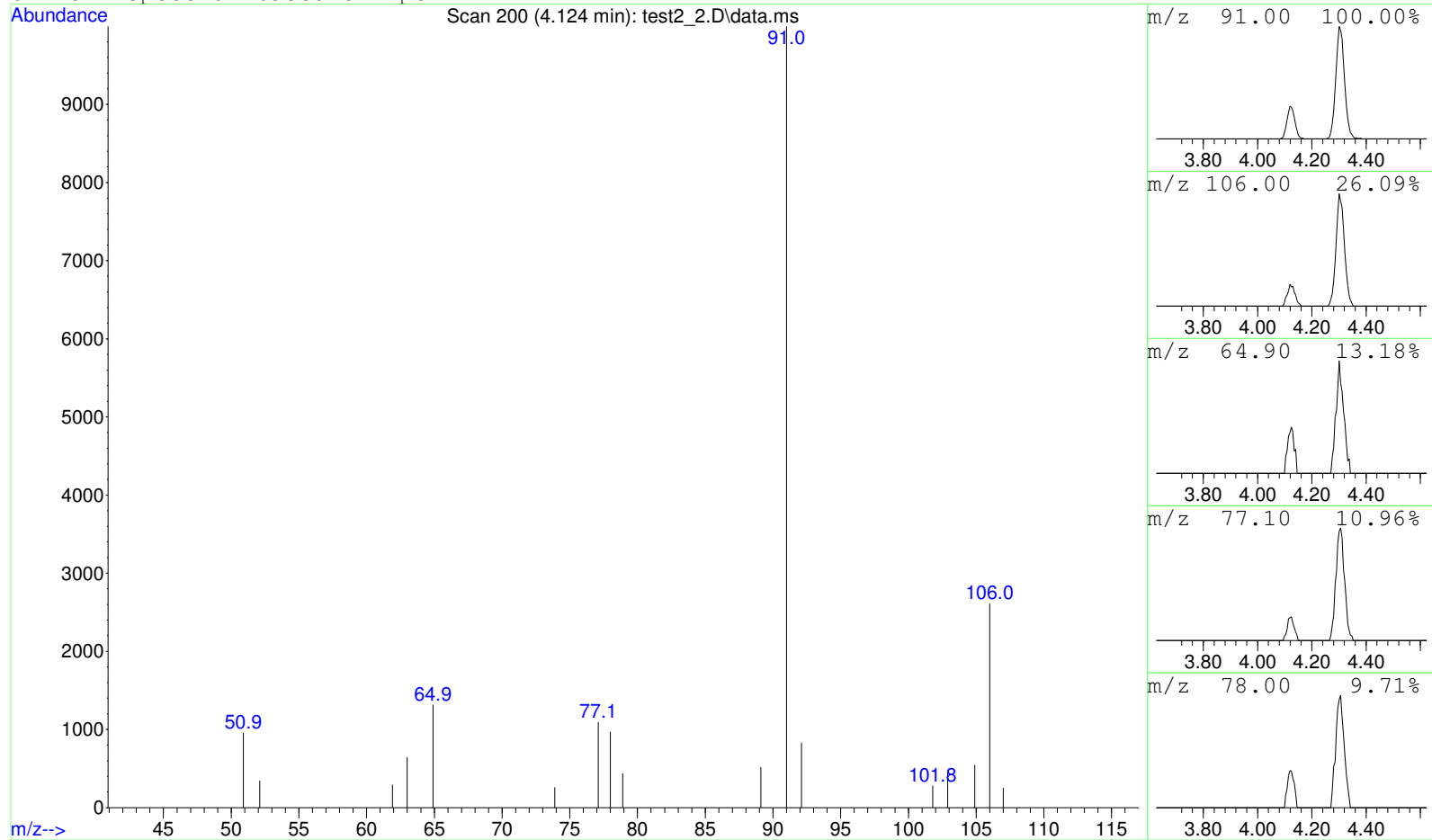
Data Path : D:\GCMS Daten\140821\
Data File : test2_2.D
Acq On : 21 Aug 2014 11:01
Operator : JD
Sample : test2
Misc :
ALS Vial : 91 Sample Multiplier: 1

Search Libraries: C:\DATABASE\DEMO.L Minimum Quality: 0

Unknown Spectrum: Apex
Integration Events: ChemStation Integrator - autoint1.e



Unknown Spectrum based on Apex



Data File: D:\GCMS Daten\140821\test2_2.D

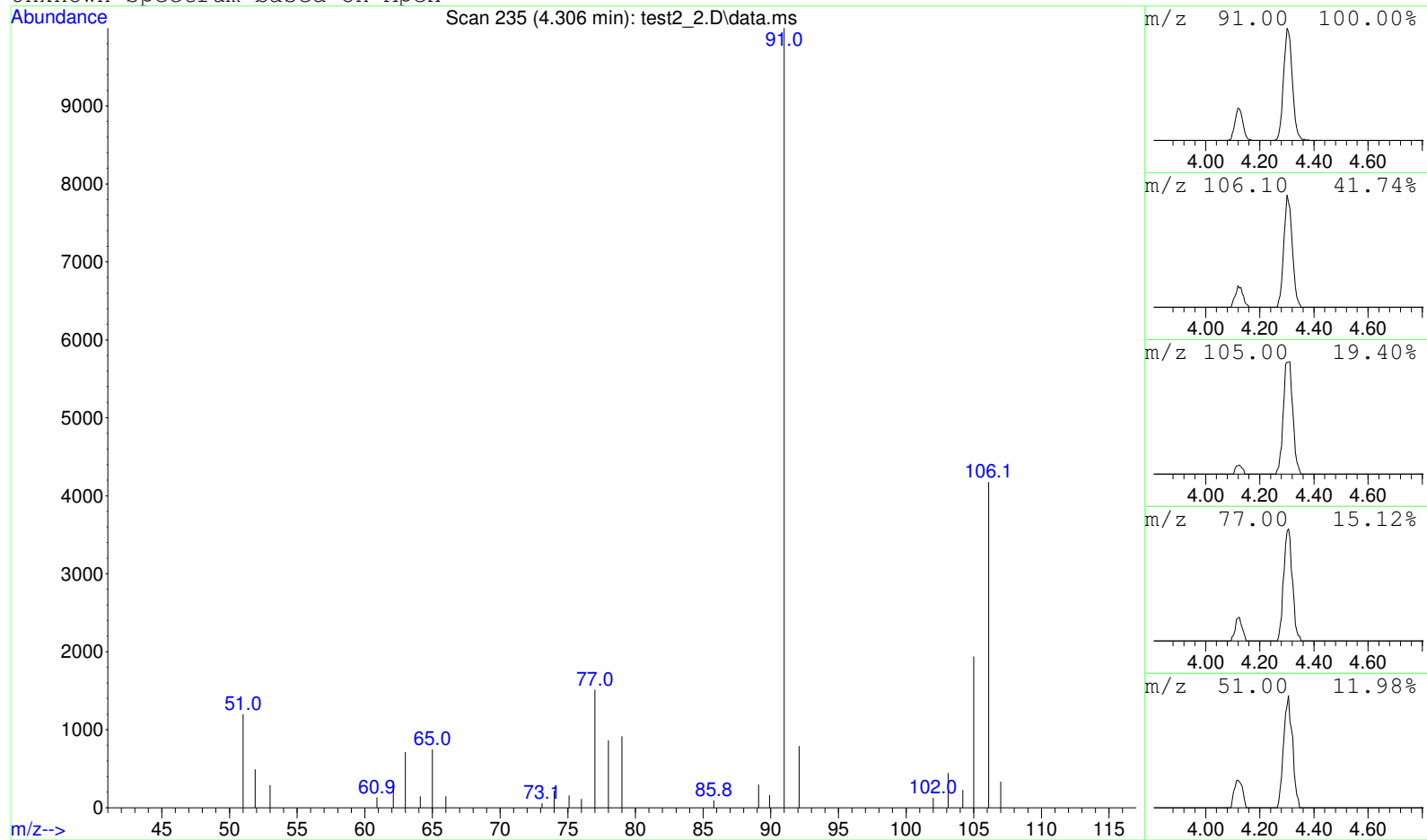
Sample : test2

Peak Number: 1 at 4.124 min Area: 309983 Area % 10.57

The 3 best hits from each library. Ref\# CAS\# Qual

C:\DATABASE\DEMO.L No hits were retrieved.

Unknown Spectrum based on Apex



Data File: D:\GCMS Daten\140821\test2_2.D

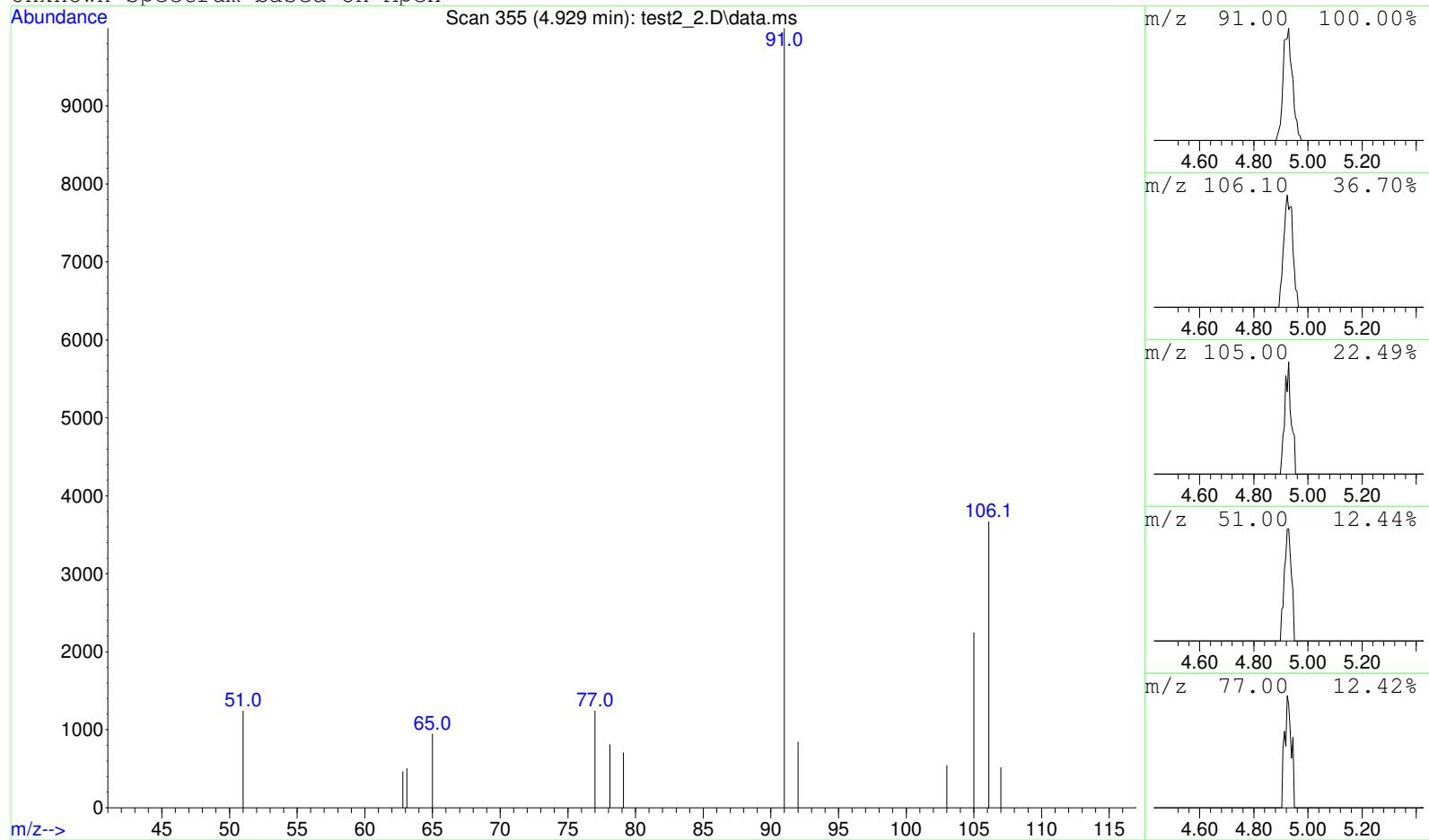
Sample : test2

Peak Number: 2 at 4.306 min Area: 1562289 Area % 53.25

The 3 best hits from each library. Ref\# CAS\# Qual

C:\DATABASE\DEMO.L No hits were retrieved.

Unknown Spectrum based on Apex



Data File: D:\GCMS Daten\140821\test2_2.D

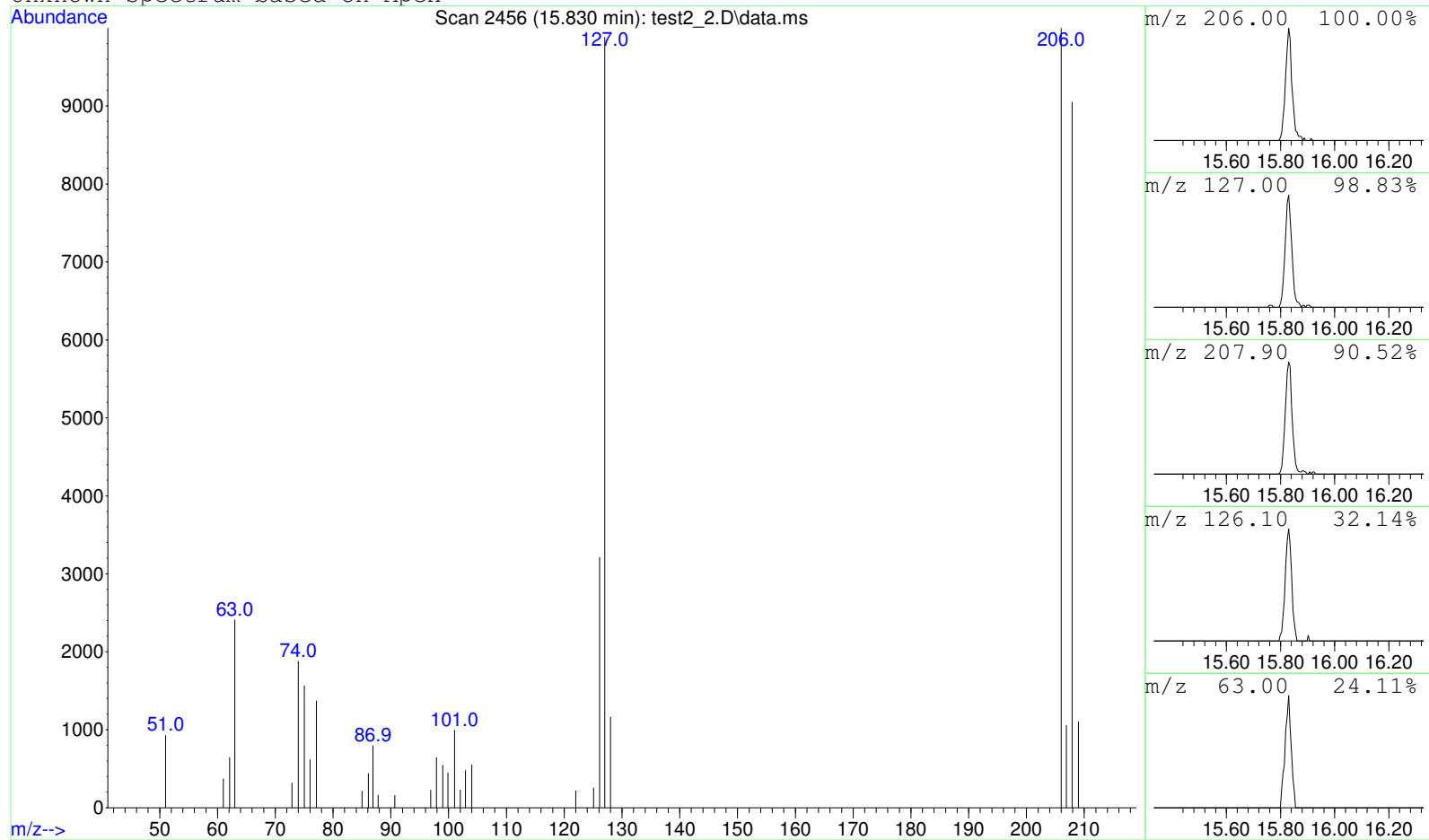
Sample : test2

Peak Number: 3 at 4.929 min Area: 218469 Area % 7.45

The 3 best hits from each library. Ref\# CAS\# Qual

C:\DATABASE\DEMO.L No hits were retrieved.

Unknown Spectrum based on Apex



Data File: D:\GCMS Daten\140821\test2_2.D

Sample : test2

Peak Number: 4 at 15.830 min Area: 843212 Area % 28.74

The 3 best hits from each library. Ref\# CAS\# Qual

C:\DATABASE\DEMO.L No hits were retrieved.