

Data Path : D:\GCMS Daten\210222\
Data File : Test_Phtalat_210222.D
Acq On : 22 Feb 2021 12:37
Operator : asa
Sample : Test_Phtalat_210222
Misc :
ALS Vial : 149 Sample Multiplier: 1

Integration Parameters: autoint1.e
Integrator: ChemStation

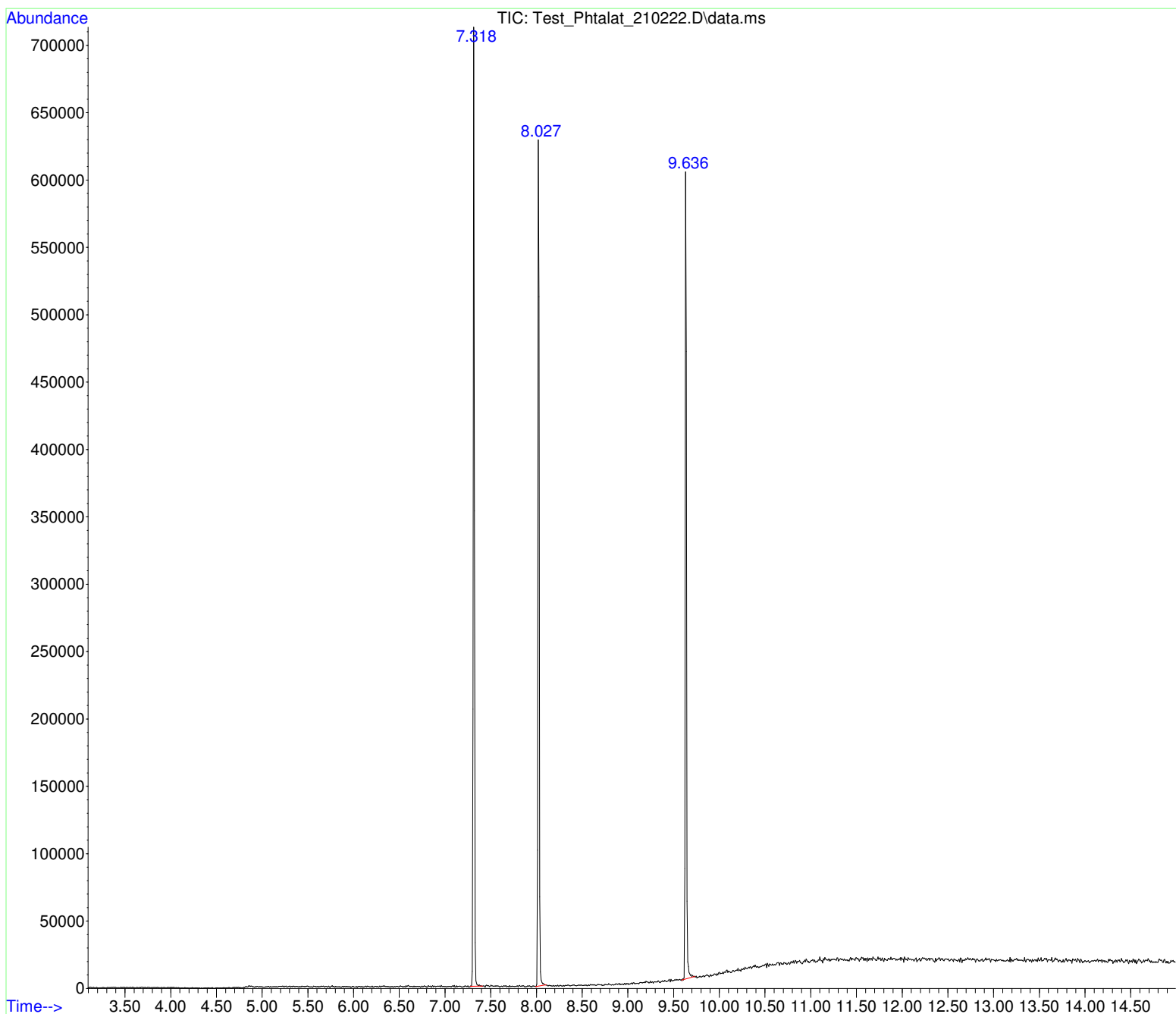
Method : D:\GCMS Daten\210216\pspad1063r.D\80_280 15MIN.M
Title :

Signal : TIC: Test_Phtalat_210222.D\data.ms

peak #	R.T. min	first scan	max scan	last scan	PK TY	peak height	corr. area	corr. % max.	% of total
1	7.318	534	539	550	BB	598132	6235843	99.72%	34.036%
2	8.027	625	629	638	BB	589911	6253616	100.00%	34.133%
3	9.636	828	834	845	BB	544741	5832021	93.26%	31.832%

Sum of corrected areas: 18321481

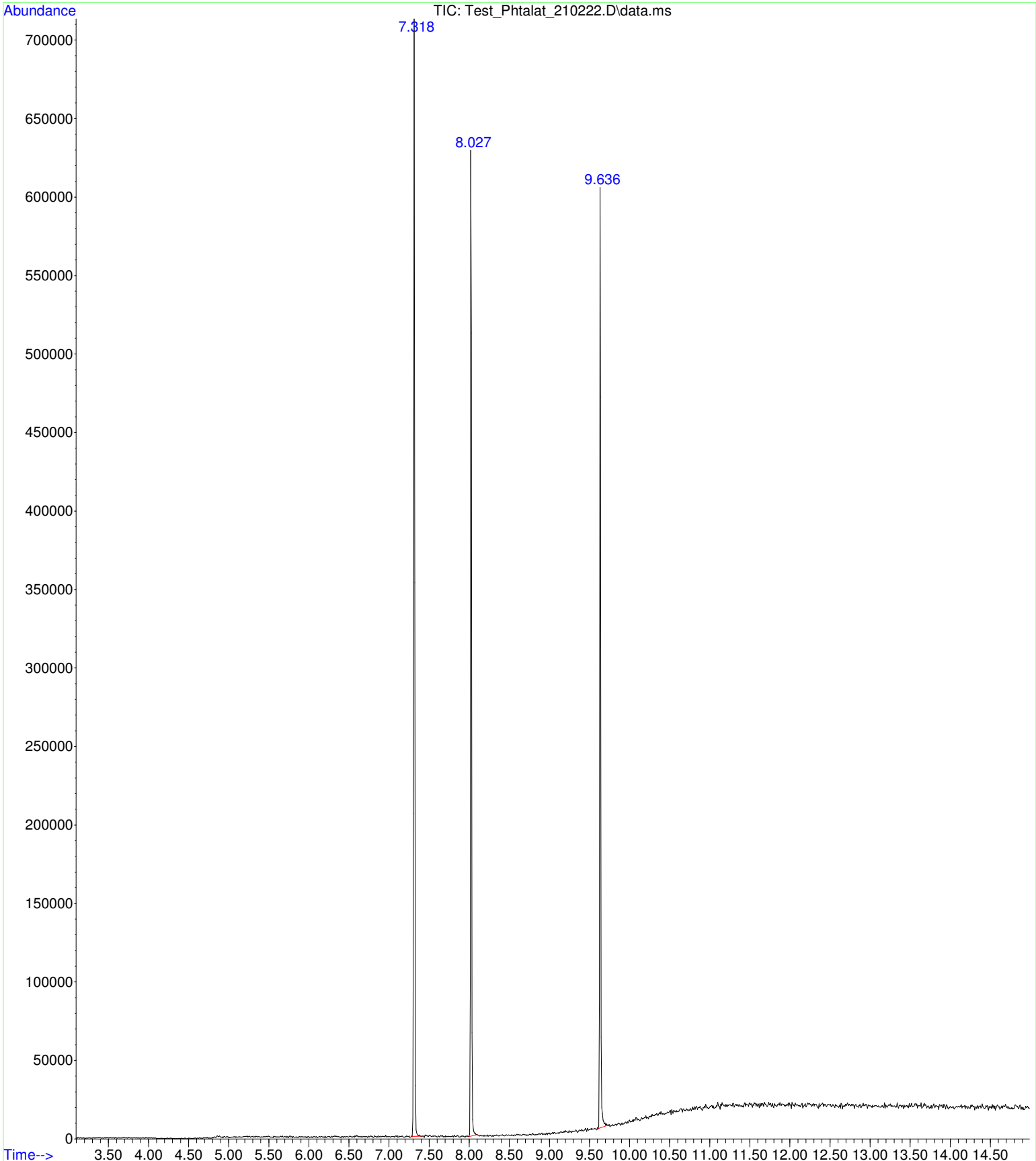
80_280 15MIN.M Mon Feb 22 13:00:37 2021 GCMS



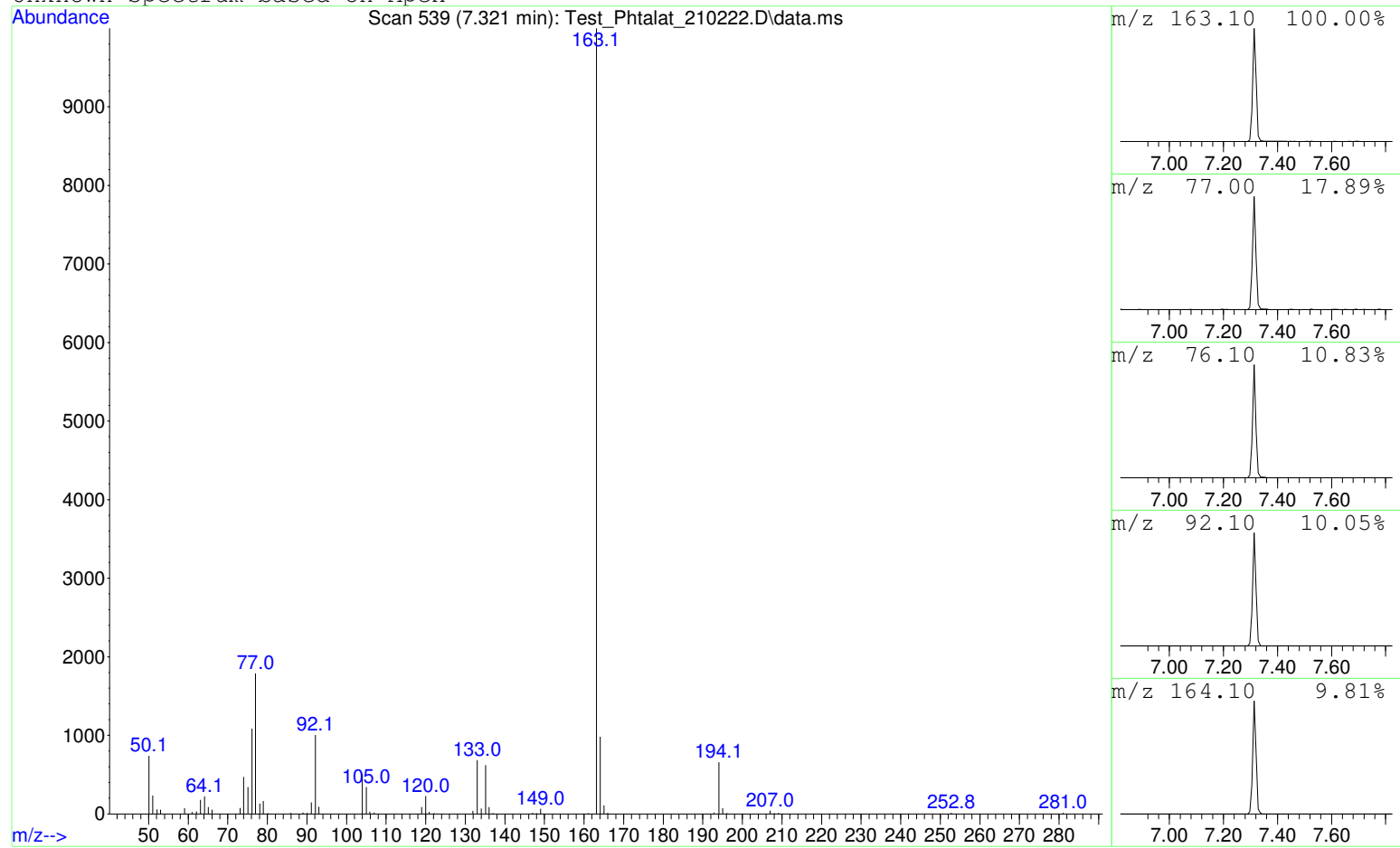
Data Path : D:\GCMS Daten\210222\
Data File : Test_Phtalat_210222.D
Acq On : 22 Feb 2021 12:37
Operator : asa
Sample : Test_Phtalat_210222
Misc :
ALS Vial : 149 Sample Multiplier: 1

Search Libraries: C:\DATABASE\DEMO.L Minimum Quality: 0

Unknown Spectrum: Apex
Integration Events: ChemStation Integrator - autoint1.e



Unknown Spectrum based on Apex



Data File: D:\GCMS Daten\210222\Test_Phtalat_210222.D

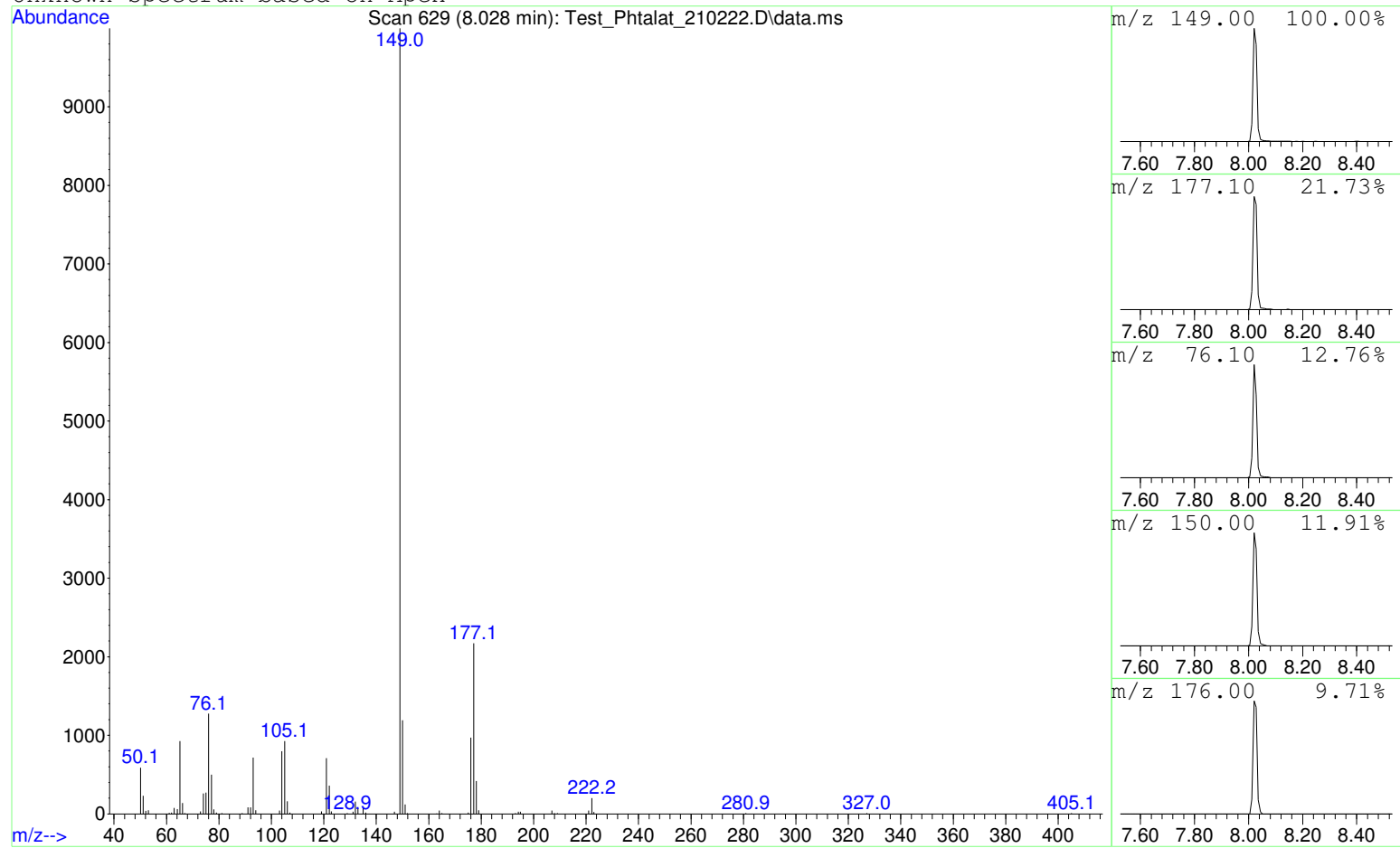
Sample : Test_Phtalat_210222

Peak Number: 1 at 7.321 min Area: 6235843 Area % 34.02

The 3 best hits from each library. Ref\# CAS\# Qual

C:\DATABASE\DEMO.L No hits were retrieved.

Unknown Spectrum based on Apex



Data File: D:\GCMS Daten\210222\Test_Phtalat_210222.D
Sample : Test_Phtalat_210222

Peak Number: 2 at 8.028 min Area: 6253616 Area % 34.12

The 3 best hits from each library. Ref\# CAS\# Qual

C:\DATABASE\DEMO.L No hits were retrieved.

Unknown Spectrum based on Apex



Data File: D:\GCMS Daten\210222\Test_Phtalat_210222.D
 Sample : Test_Phtalat_210222

Peak Number: 3 at 9.638 min Area: 5838927 Area % 31.86

The 3 best hits from each library. Ref\# CAS\# Qual

C:\DATABASE\DEMO.L No hits were retrieved.