

Data Path : D:\GCMS Daten\201021\
Data File : Test_Phtalat201021.D
Acq On : 21 Oct 2020 14:22
Operator : asa
Sample : Test_Phtalat201021
Misc :
ALS Vial : 149 Sample Multiplier: 1

Integration Parameters: autoint1.e
Integrator: ChemStation

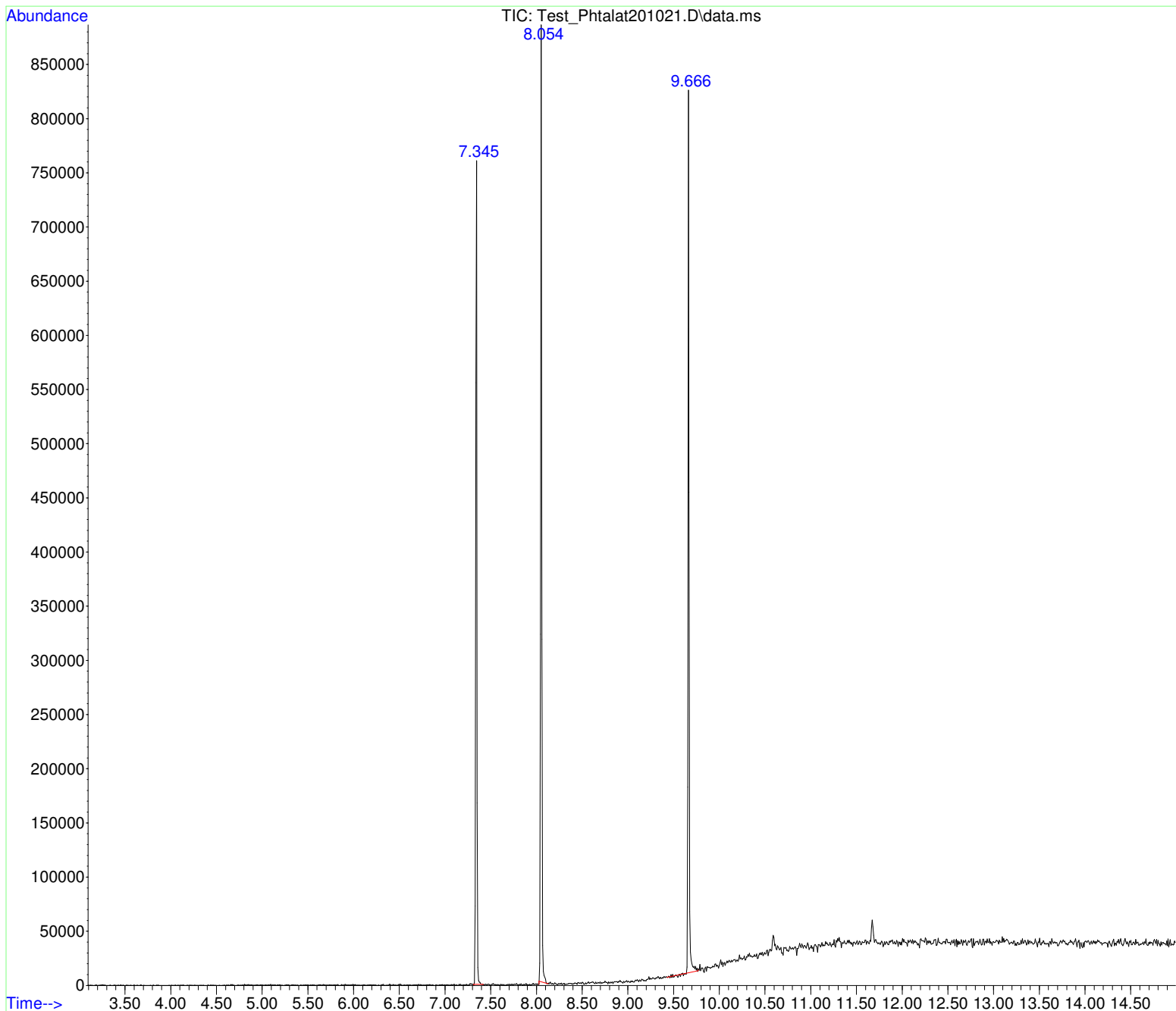
Method : D:\GCMS Daten\201009\ocquala.D\80_280 15MIN.M
Title :

Signal : TIC: Test_Phtalat201021.D\data.ms

peak #	R.T. min	first scan	max scan	last scan	PK TY	peak height	corr. area	corr. % max.	% of total
1	7.345	538	542	550	BB	716341	7446759	99.19%	33.507%
2	8.054	629	632	641	BB	770637	7507625	100.00%	33.781%
3	9.666	807	838	851	BB	734474	7270172	96.84%	32.712%

Sum of corrected areas: 22224555

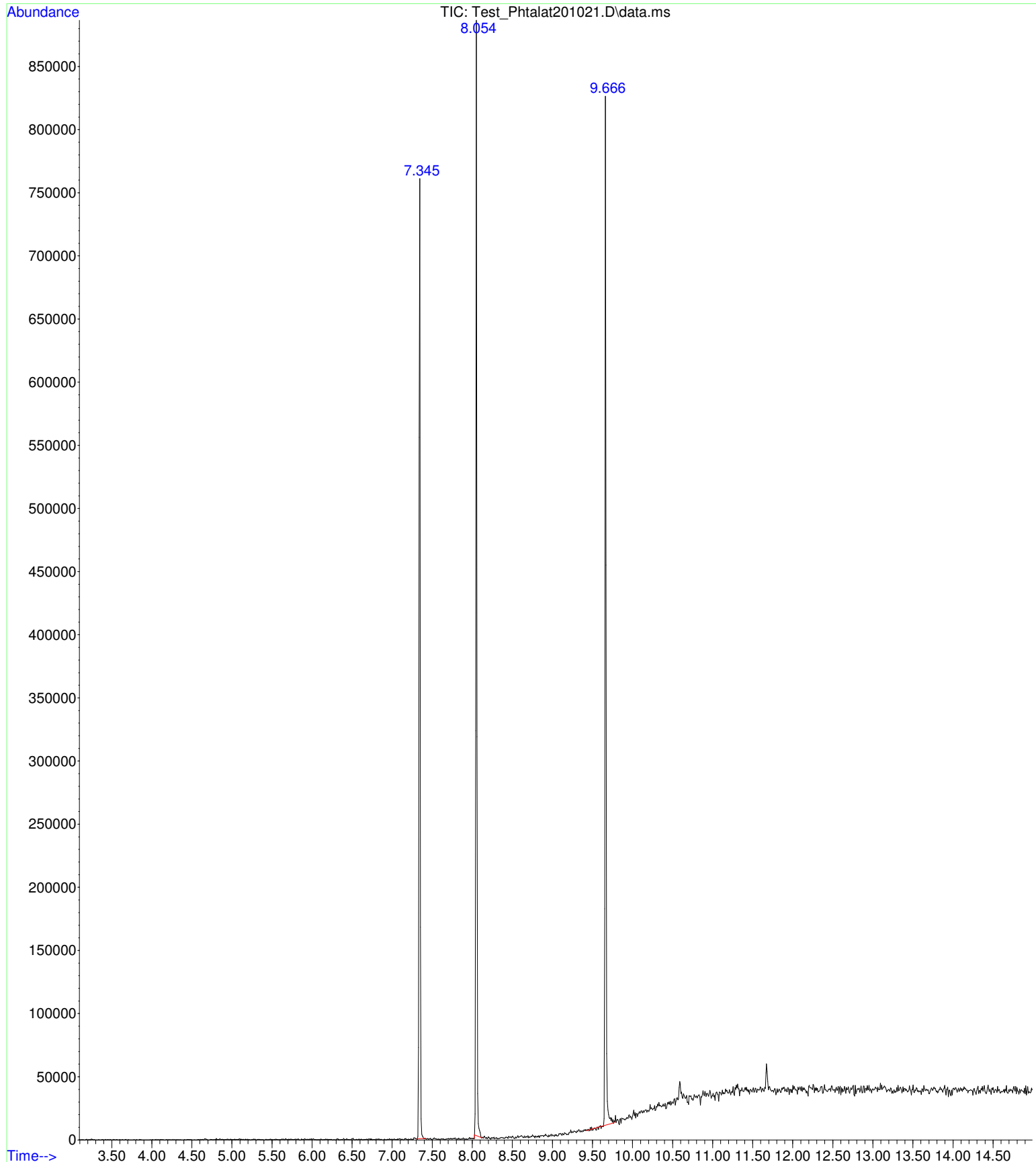
80_280 15MIN.M Thu Oct 22 09:18:20 2020 GCMS



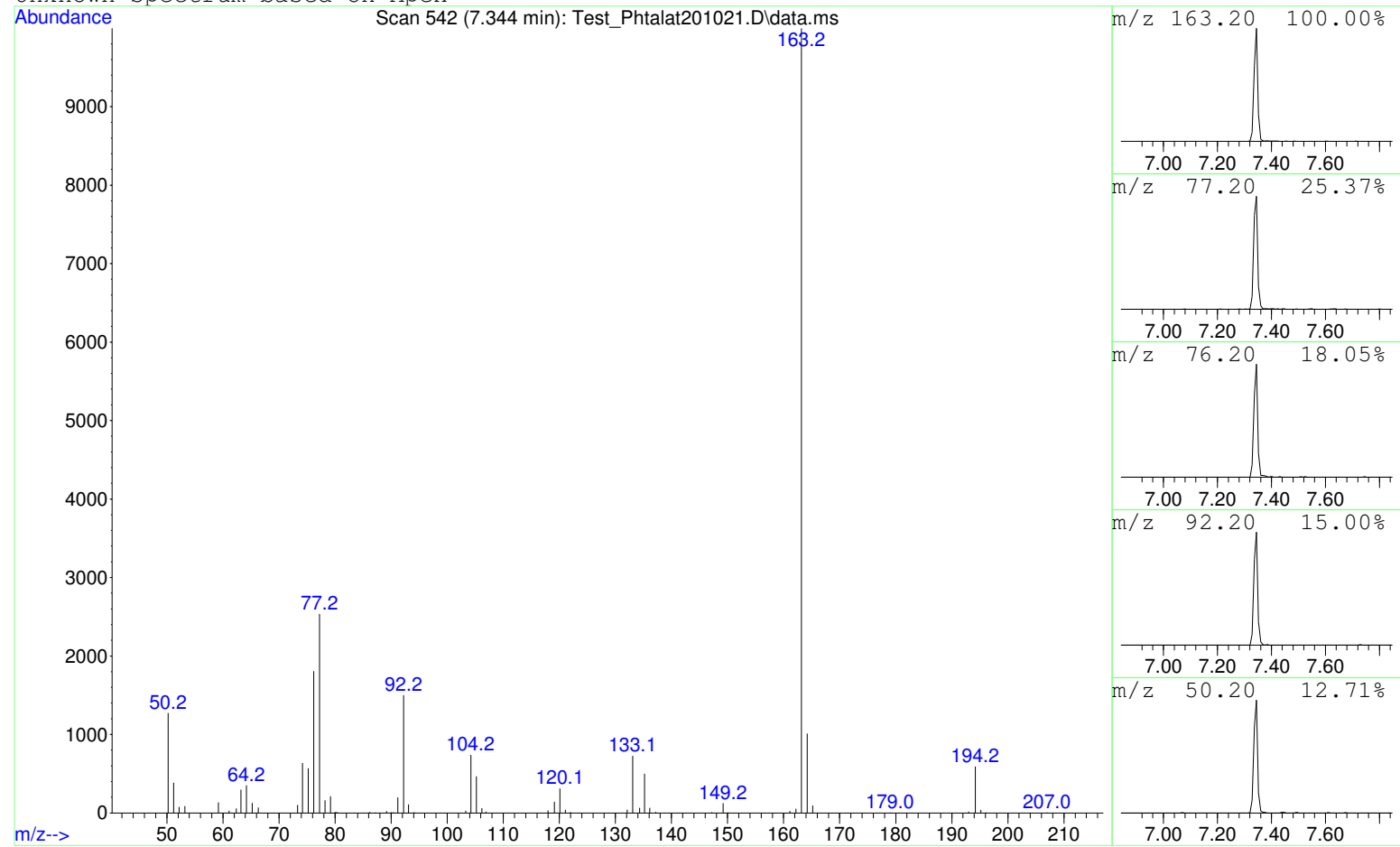
Data Path : D:\GCMS Daten\201021\
Data File : Test_Phtalat201021.D
Acq On : 21 Oct 2020 14:22
Operator : asa
Sample : Test_Phtalat201021
Misc :
ALS Vial : 149 Sample Multiplier: 1

Search Libraries: C:\DATABASE\DEMO.L Minimum Quality: 0

Unknown Spectrum: Apex
Integration Events: ChemStation Integrator - autoint1.e



Unknown Spectrum based on Apex



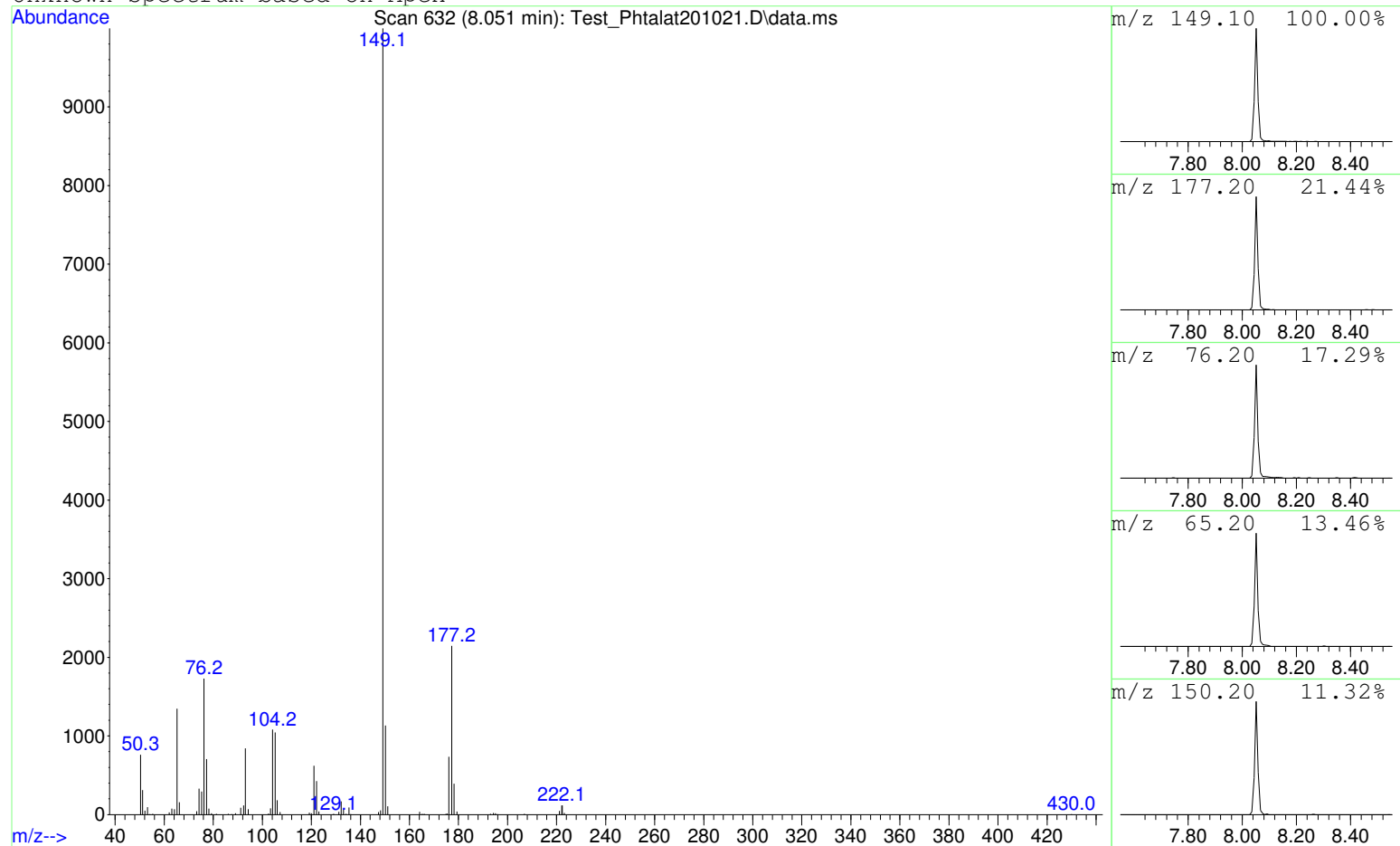
Data File: D:\GCMS Daten\201021\Test_Phtalat201021.D
Sample : Test_Phtalat201021

Peak Number: 1 at 7.344 min Area: 7446759 Area % 33.51

The 3 best hits from each library. Ref\# CAS\# Qual

C:\DATABASE\DEMO.L No hits were retrieved.

Unknown Spectrum based on Apex



Data File: D:\GCMS Daten\201021\Test_Phtalat201021.D

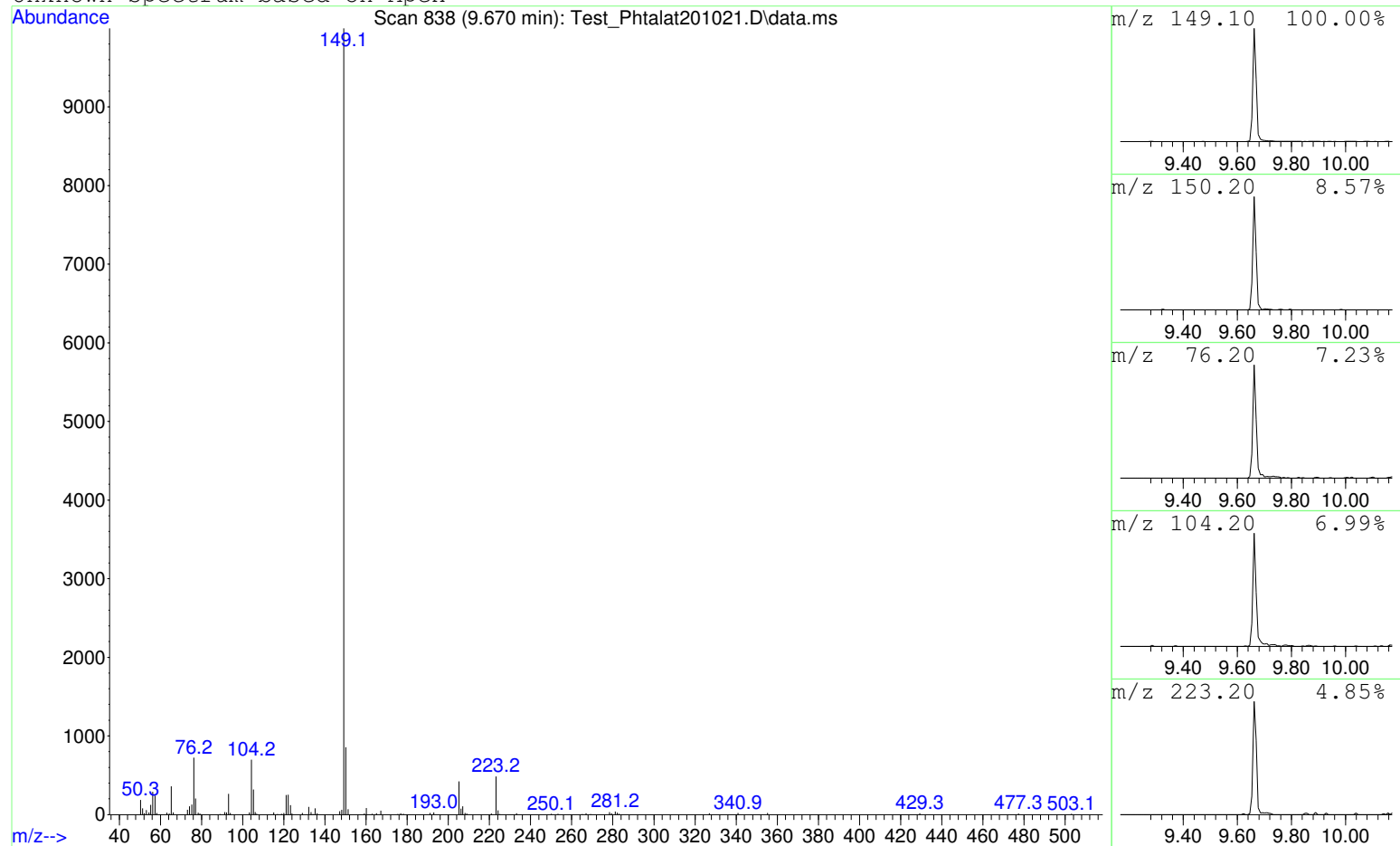
Sample : Test_Phtalat201021

Peak Number: 2 at 8.051 min Area: 7507625 Area % 33.78

The 3 best hits from each library. Ref\# CAS\# Qual

C:\DATABASE\DEMO.L No hits were retrieved.

Unknown Spectrum based on Apex



Data File: D:\GCMS Daten\201021\Test_Phtalat201021.D

Sample : Test_Phtalat201021

Peak Number: 3 at 9.670 min Area: 7270172 Area % 32.71

The 3 best hits from each library. Ref\# CAS\# Qual

C:\DATABASE\DEMO.L No hits were retrieved.