

Data Path : D:\GCMS Daten\200928\
Data File : Test_Phtalat_200927.D
Acq On : 28 Sep 2020 12:41
Operator : afk
Sample : Test_Phtalat_200927
Misc :
ALS Vial : 149 Sample Multiplier: 1

Integration Parameters: autoint1.e
Integrator: ChemStation

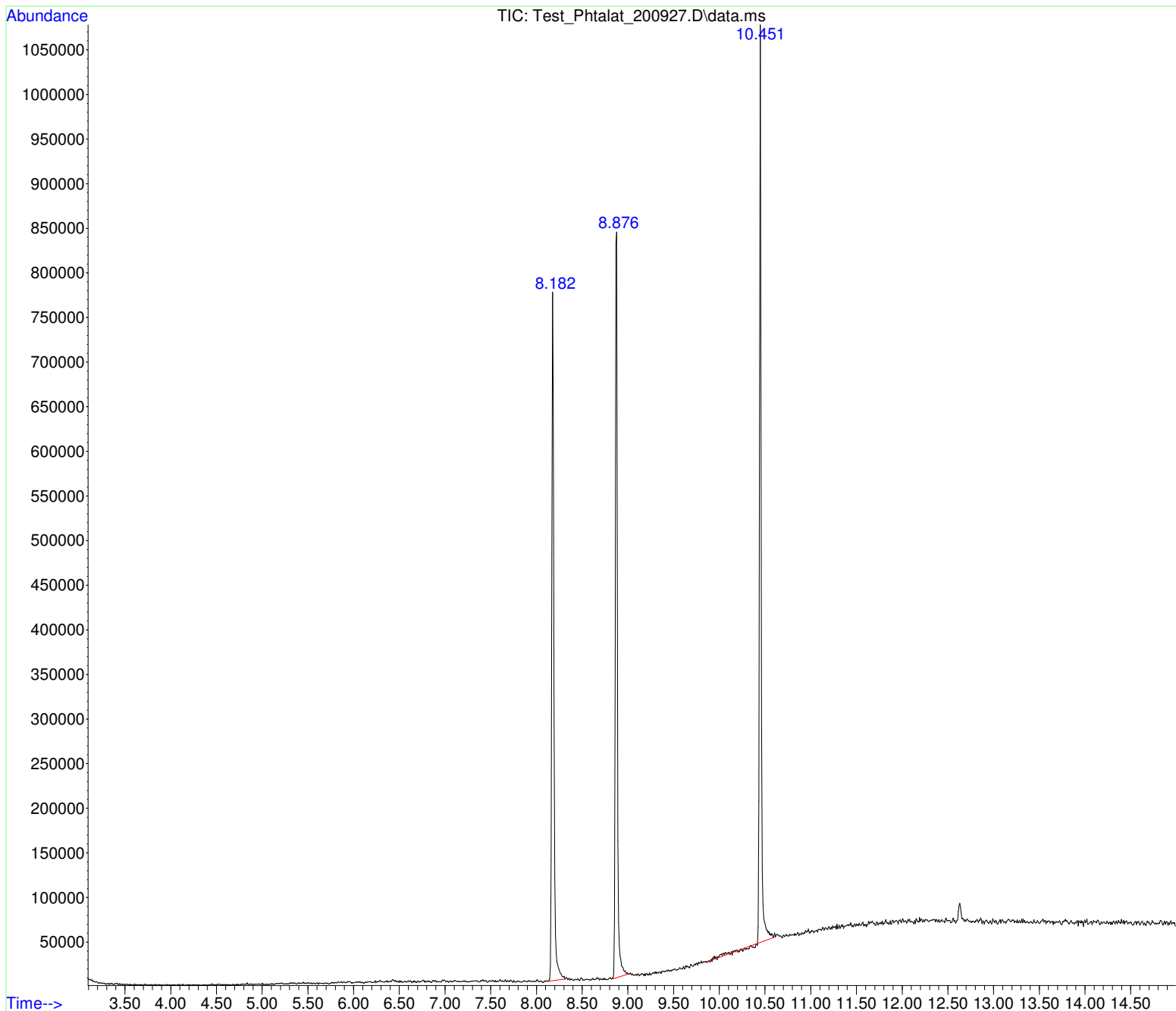
Method : D:\GCMS Daten\200925\Phthalatetest200924_10_.D\80_280 15MIN.M
Title :

Signal : TIC: Test_Phtalat_200927.D\data.ms

peak #	R.T. min	first scan	max scan	last scan	PK TY	peak height	corr. area	corr. % max.	% of total
1	8.182	641	649	666	BV	726963	12413764	85.60%	30.769%
2	8.876	732	737	754	BB	848907	13429438	92.60%	33.286%
3	10.451	864	937	956	BV	975754	14502133	100.00%	35.945%

Sum of corrected areas: 40345335

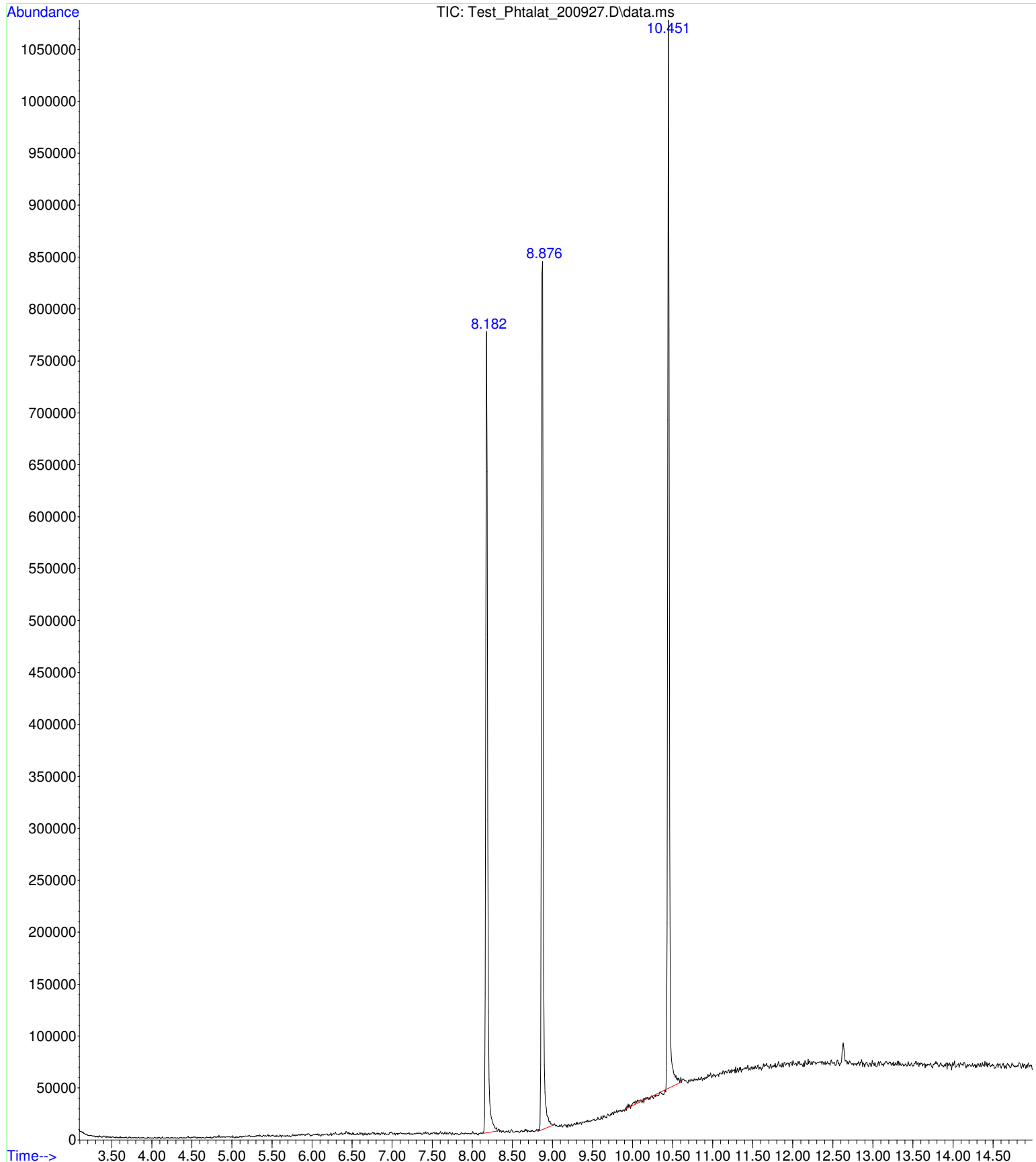
80_280 15MIN.M Tue Sep 29 11:28:48 2020 GCMS



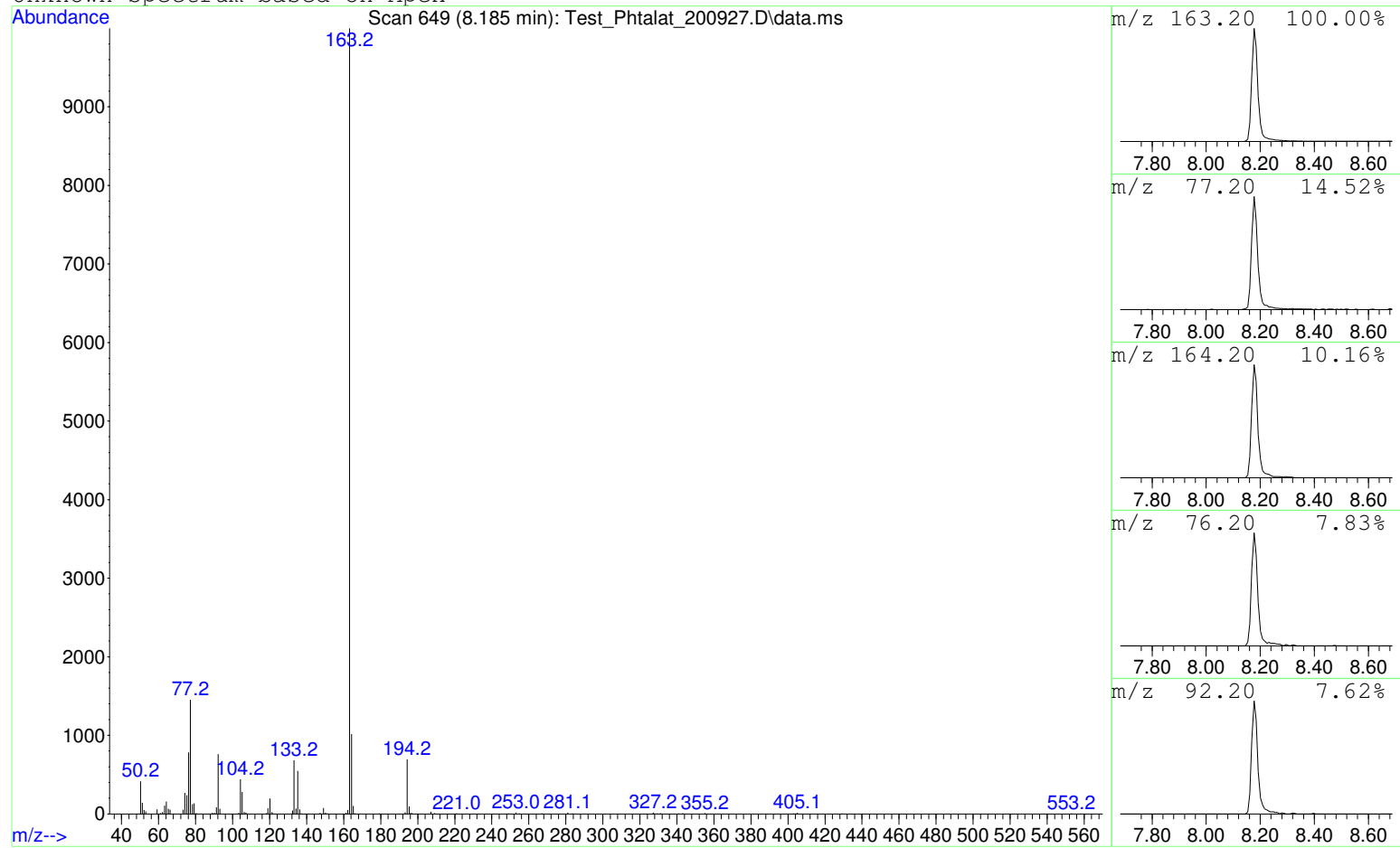
Data Path : D:\GCMS Daten\200928\
Data File : Test_Phtalat_200927.D
Acq On : 28 Sep 2020 12:41
Operator : afk
Sample : Test_Phtalat_200927
Misc :
ALS Vial : 149 Sample Multiplier: 1

Search Libraries: C:\DATABASE\DEMO.L Minimum Quality: 0

Unknown Spectrum: Apex
Integration Events: ChemStation Integrator - autoint1.e



Unknown Spectrum based on Apex



Data File: D:\GCMS Daten\200928\Test_Phtalat_200927.D
Sample : Test_Phtalat_200927

Peak Number: 1 at 8.185 min Area: 12413764 Area % 30.78

The 3 best hits from each library. Ref\# CAS\# Qual

C:\DATABASE\DEMO.L No hits were retrieved.

Unknown Spectrum based on Apex



Data File: D:\GCMS Daten\200928\Test_Phtalat_200927.D

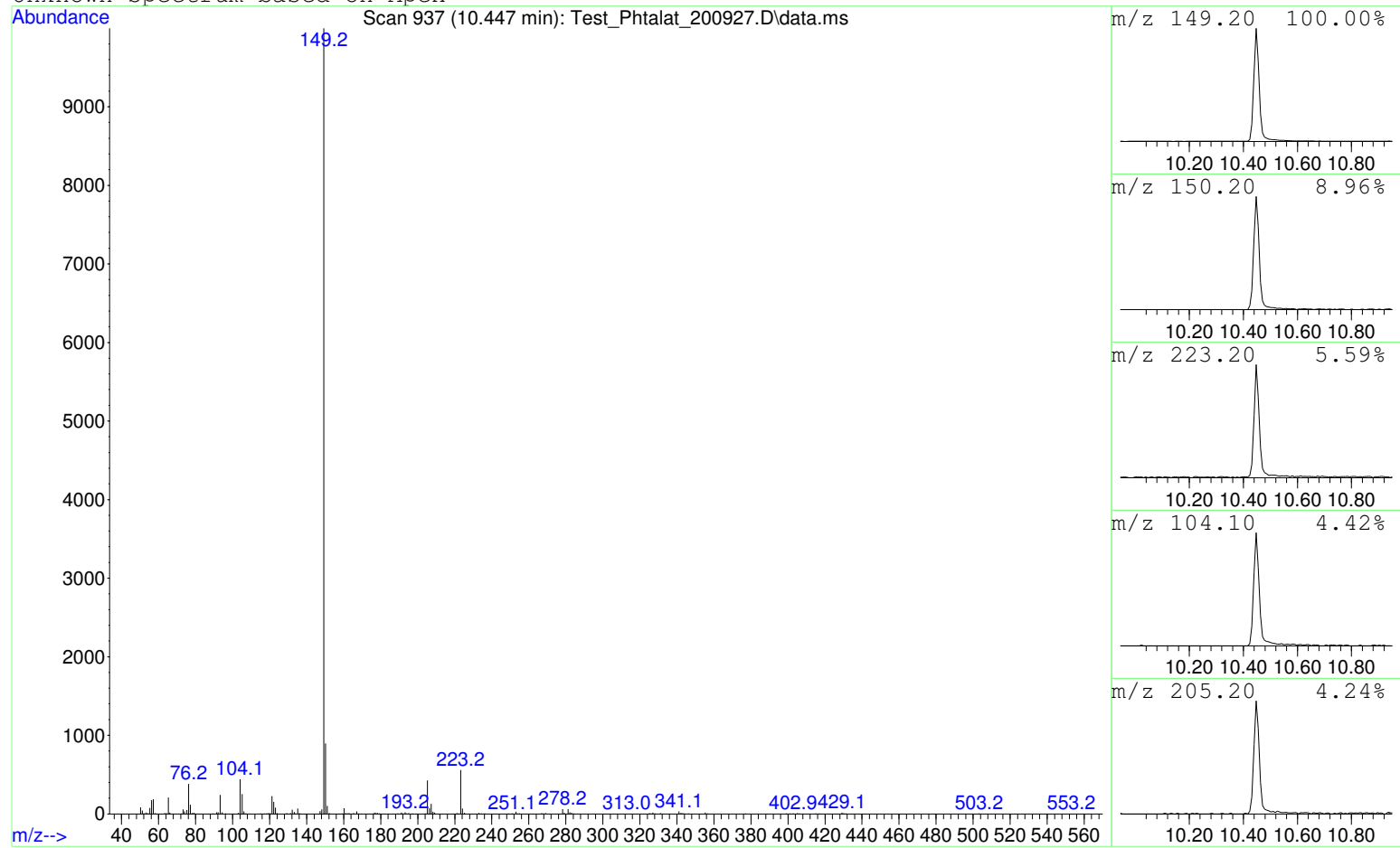
Sample : Test_Phtalat_200927

Peak Number: 2 at 8.876 min Area: 13429438 Area % 33.30

The 3 best hits from each library. Ref\# CAS\# Qual

C:\DATABASE\DEMO.L No hits were retrieved.

Unknown Spectrum based on Apex



Data File: D:\GCMS Daten\200928\Test_Phtalat_200927.D

Sample : Test_Phtalat_200927

Peak Number: 3 at 10.447 min Area: 14487608 Area % 35.92

The 3 best hits from each library.

Ref\#

CAS\#

Qual

C:\DATABASE\DEMO.L No hits were retrieved.