

Data Path : D:\GCMS Daten\180115\
Data File : Test_180115_Phtalat.D
Acq On : 15 Jan 2018 10:59
Operator : ip
Sample : Test_180115_Phtalat
Misc :
ALS Vial : 149 Sample Multiplier: 1

Integration Parameters: autoint1.e
Integrator: ChemStation

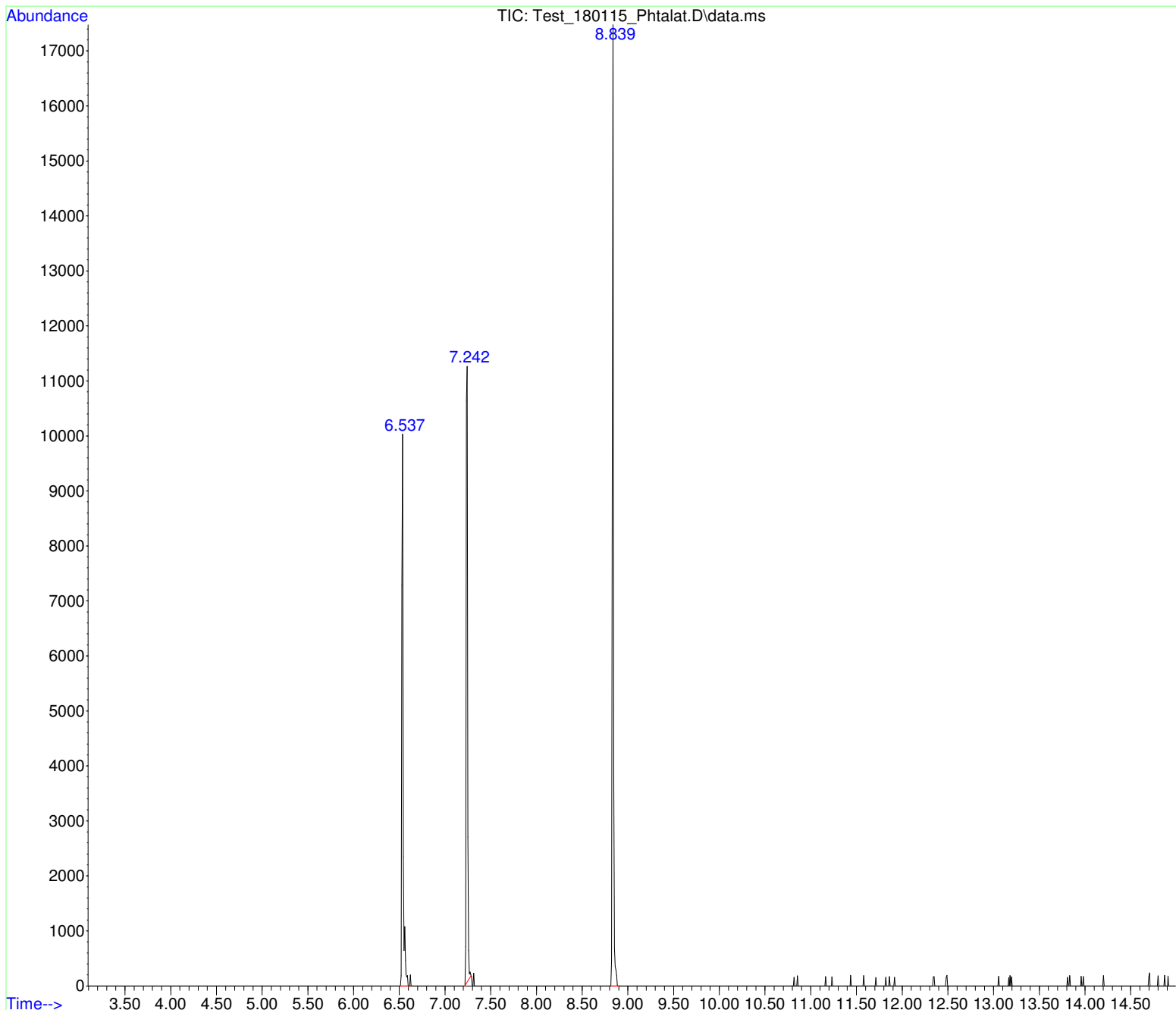
Method : D:\GCMS Daten\180109\ockh3258.D\80_280 15MIN.M
Title :

Signal : TIC: Test_180115_Phtalat.D\data.ms

peak #	R.T. min	first scan	max scan	last scan	PK TY	peak height	corr. area	corr. % max.	% of total
1	6.537	435	439	448	BB	9180	106542	68.35%	27.780%
2	7.242	525	529	535	BB	11232	121107	77.70%	31.578%
3	8.839	729	732	739	BB	15955	155868	100.00%	40.642%

Sum of corrected areas: 383517

80_280 15MIN.M Tue Jan 16 09:20:38 2018 GCMS



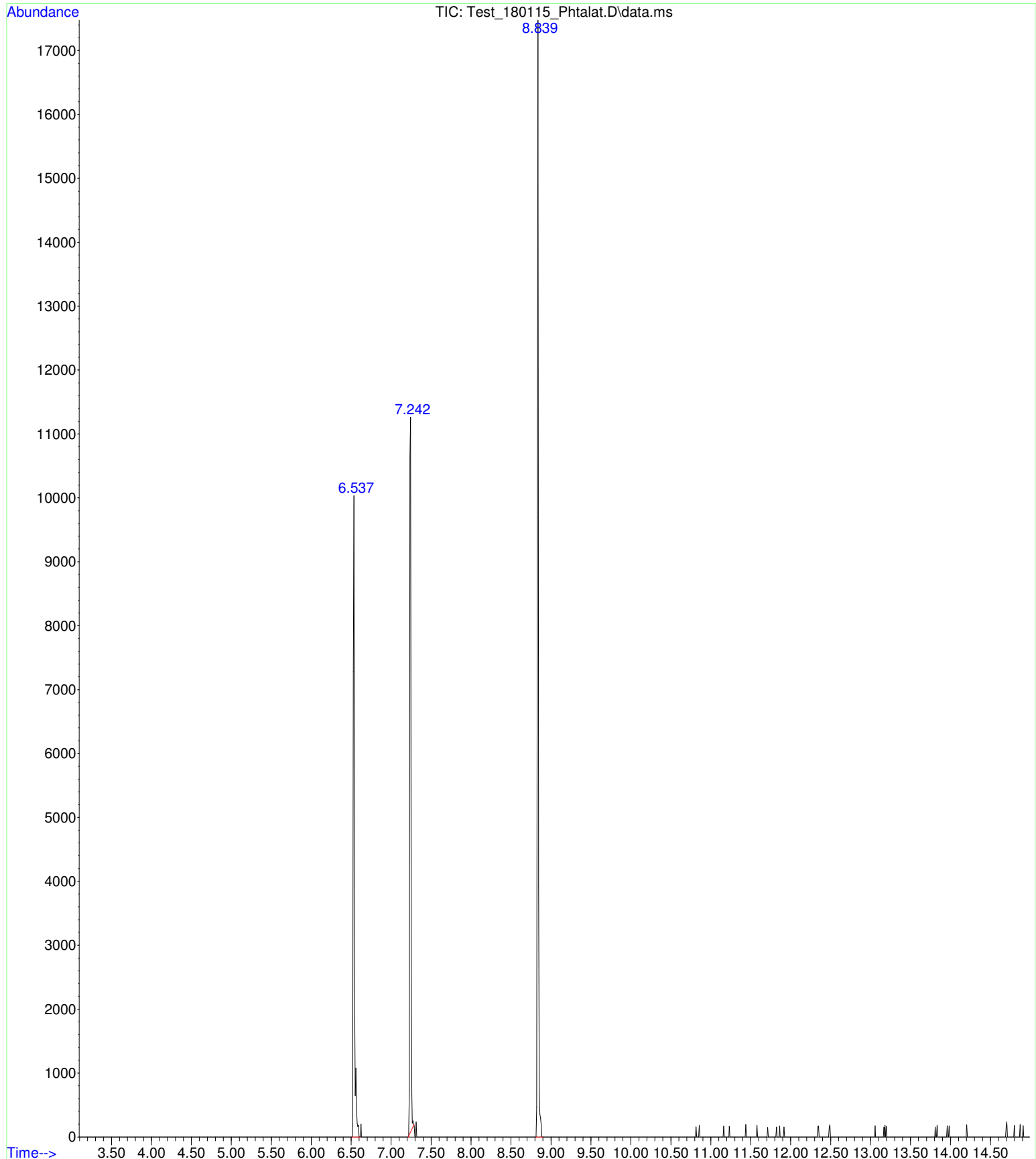
Data Path : D:\GCMS Daten\180115\
Data File : Test_180115_Phtalat.D
Acq On : 15 Jan 2018 10:59
Operator : ip
Sample : Test_180115_Phtalat
Misc :
ALS Vial : 149 Sample Multiplier: 1

Search Libraries: C:\DATABASE\DEMO.L

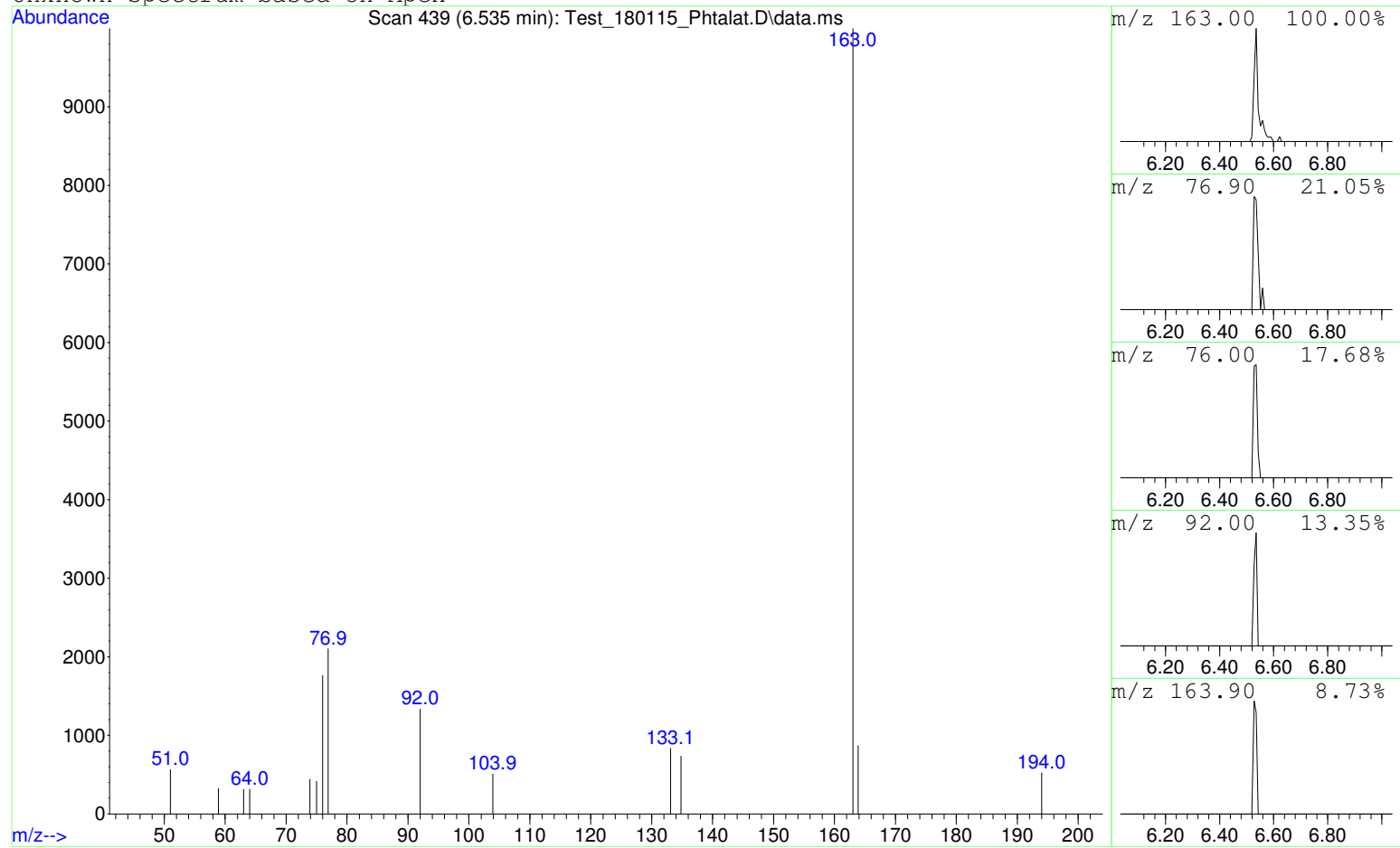
Minimum Quality: 0

Unknown Spectrum: Apex

Integration Events: ChemStation Integrator - autoint1.e



Unknown Spectrum based on Apex



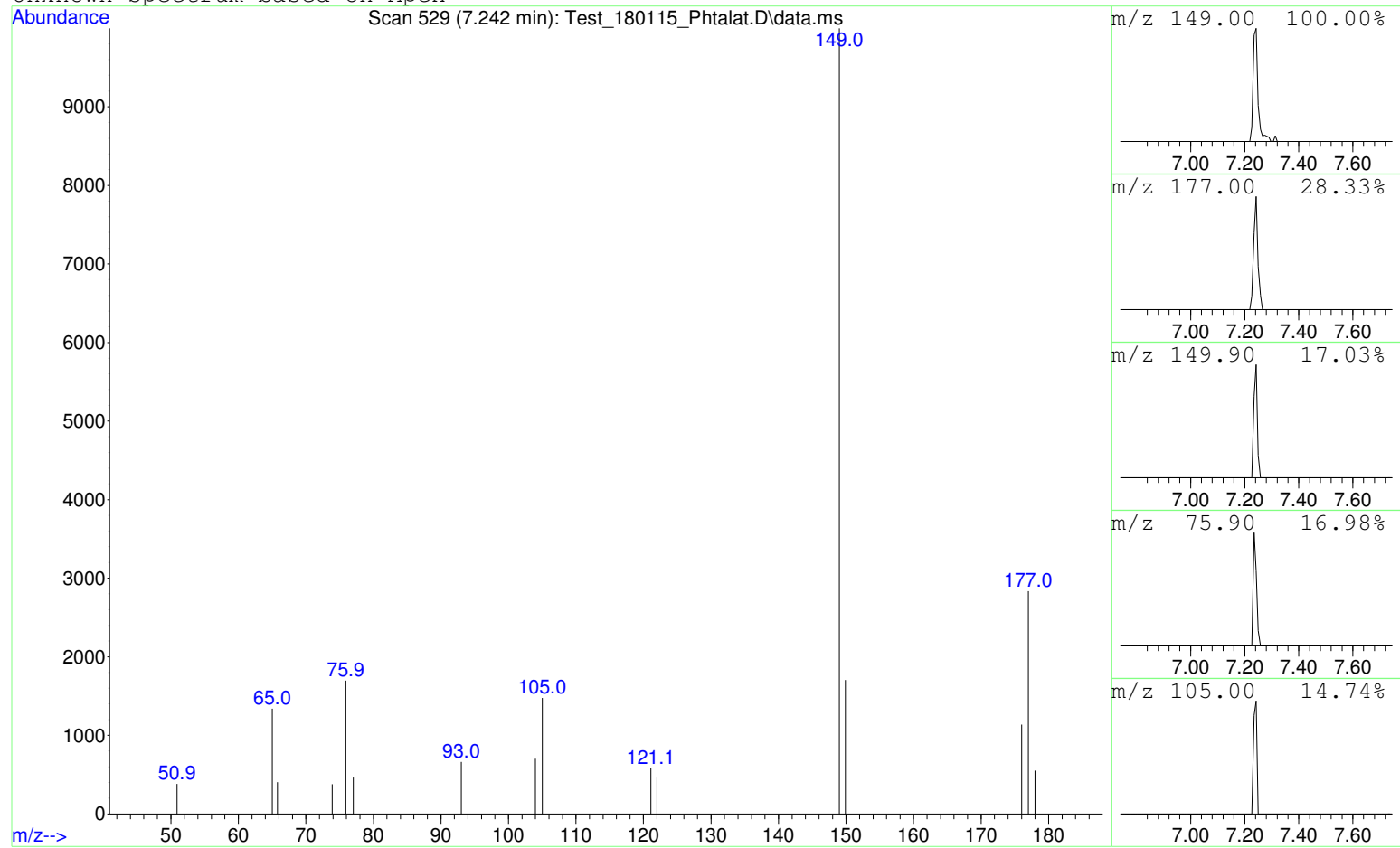
Data File: D:\GCMS Daten\180115\Test_180115_Phtalat.D
Sample : Test_180115_Phtalat

Peak Number: 1 at 6.535 min Area: 106542 Area % 27.78

The 3 best hits from each library. Ref\# CAS\# Qual

C:\DATABASE\DEMO.L No hits were retrieved.

Unknown Spectrum based on Apex



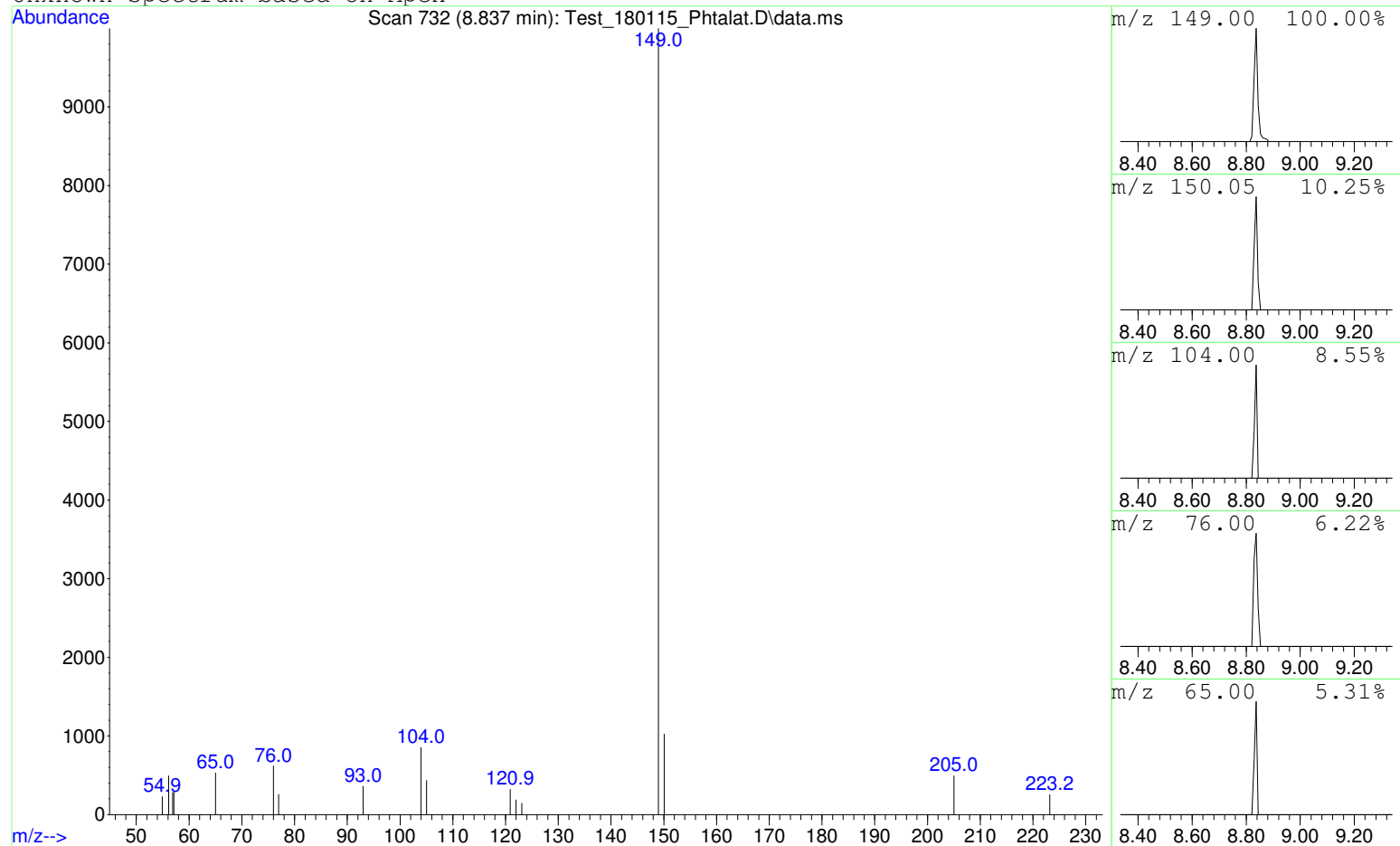
Data File: D:\GCMS Daten\180115\Test_180115_Phtalat.D
 Sample : Test_180115_Phtalat

Peak Number: 2 at 7.242 min Area: 121107 Area % 31.58

The 3 best hits from each library. Ref\# CAS\# Qual

C:\DATABASE\DEMO.L No hits were retrieved.

Unknown Spectrum based on Apex



Data File: D:\GCMS Daten\180115\Test_180115_Phtalat.D

Sample : Test_180115_Phtalat

Peak Number: 3 at 8.837 min Area: 155868 Area % 40.64

The 3 best hits from each library. Ref\# CAS\# Qual

C:\DATABASE\DEMO.L No hits were retrieved.