

Data Path : D:\GCMS Daten\190614\  
Data File : Phthalatetest\_190614.D  
Acq On : 14 Jun 2019 12:21  
Operator : sb  
Sample : Phthalatetest\_190614  
Misc :  
ALS Vial : 149 Sample Multiplier: 1

Integration Parameters: autoint1.e  
Integrator: ChemStation

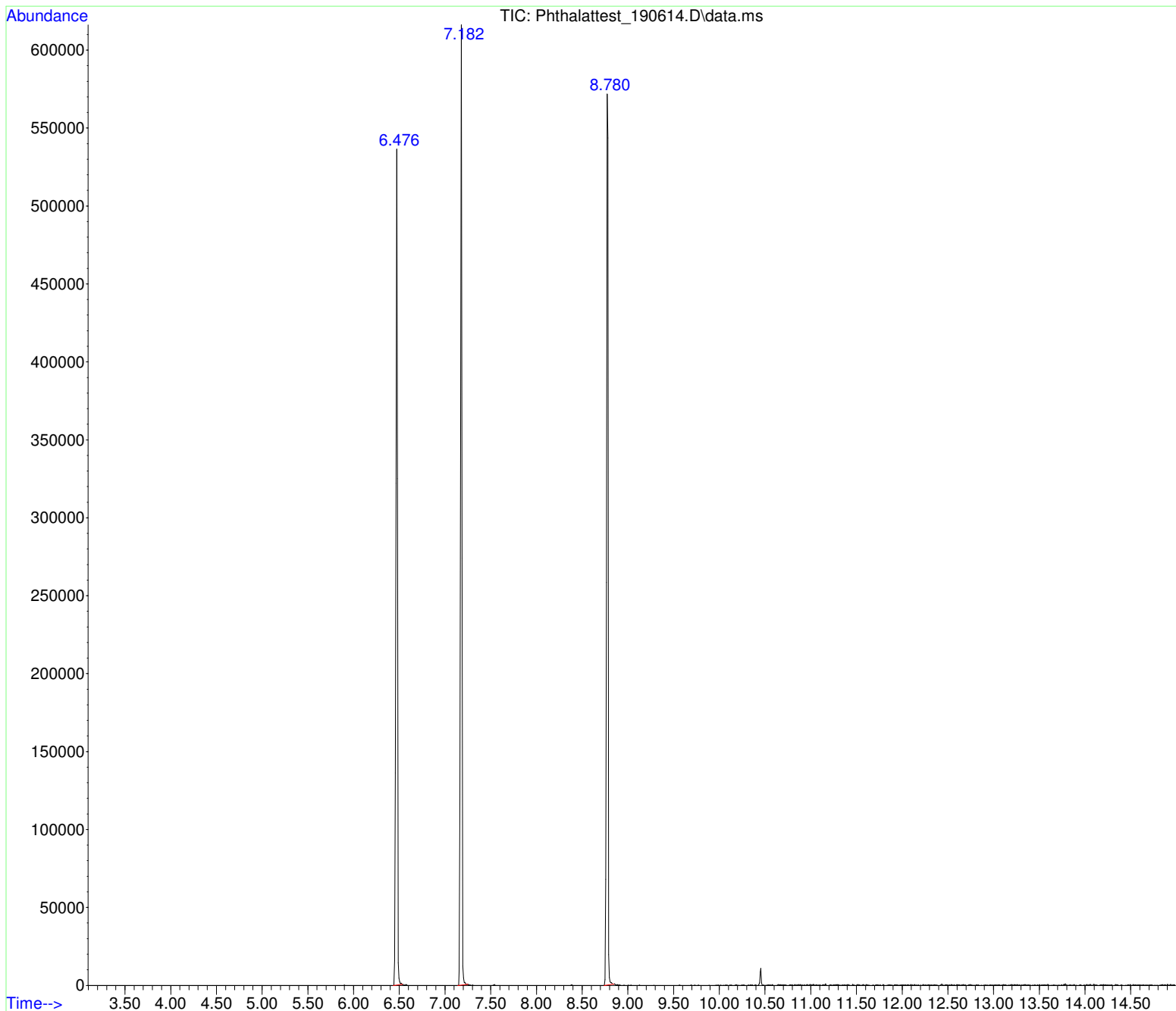
Method : D:\GCMS Daten\190606\mcm82.D\STANDARD.M  
Title :

Signal : TIC: Phthalatetest\_190614.D\data.ms

peak #	R.T. min	first scan	max scan	last scan	PK TY	peak height	corr. area	corr. % max.	% of total
1	6.476	426	431	439	BB	497709	6388944	92.05%	32.119%
2	7.182	516	521	529	BB	568467	6561958	94.54%	32.989%
3	8.780	720	725	732	BB	572079	6940728	100.00%	34.893%

Sum of corrected areas: 19891630

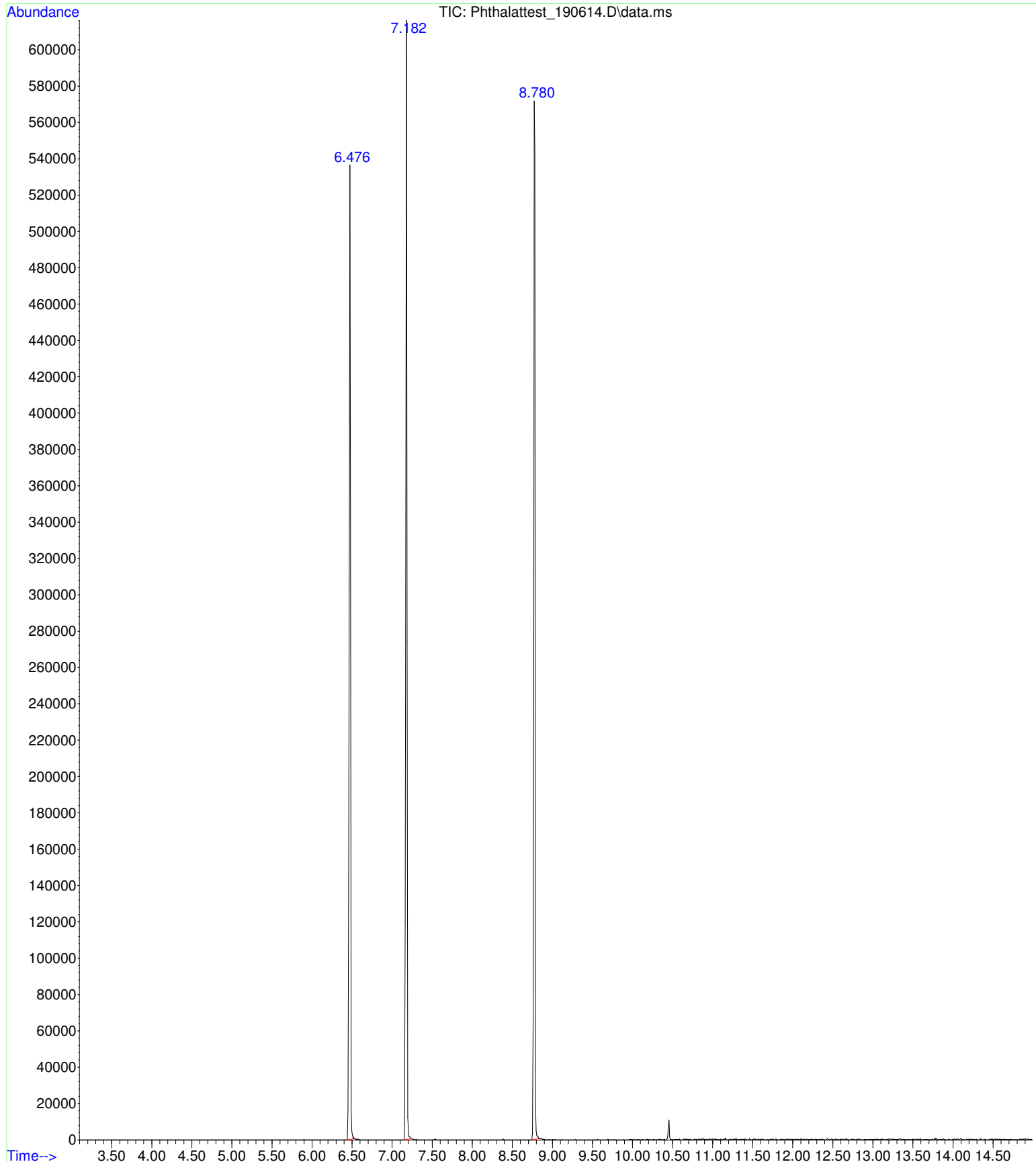
STANDARD.M Fri Jun 14 12:41:04 2019 GCMS



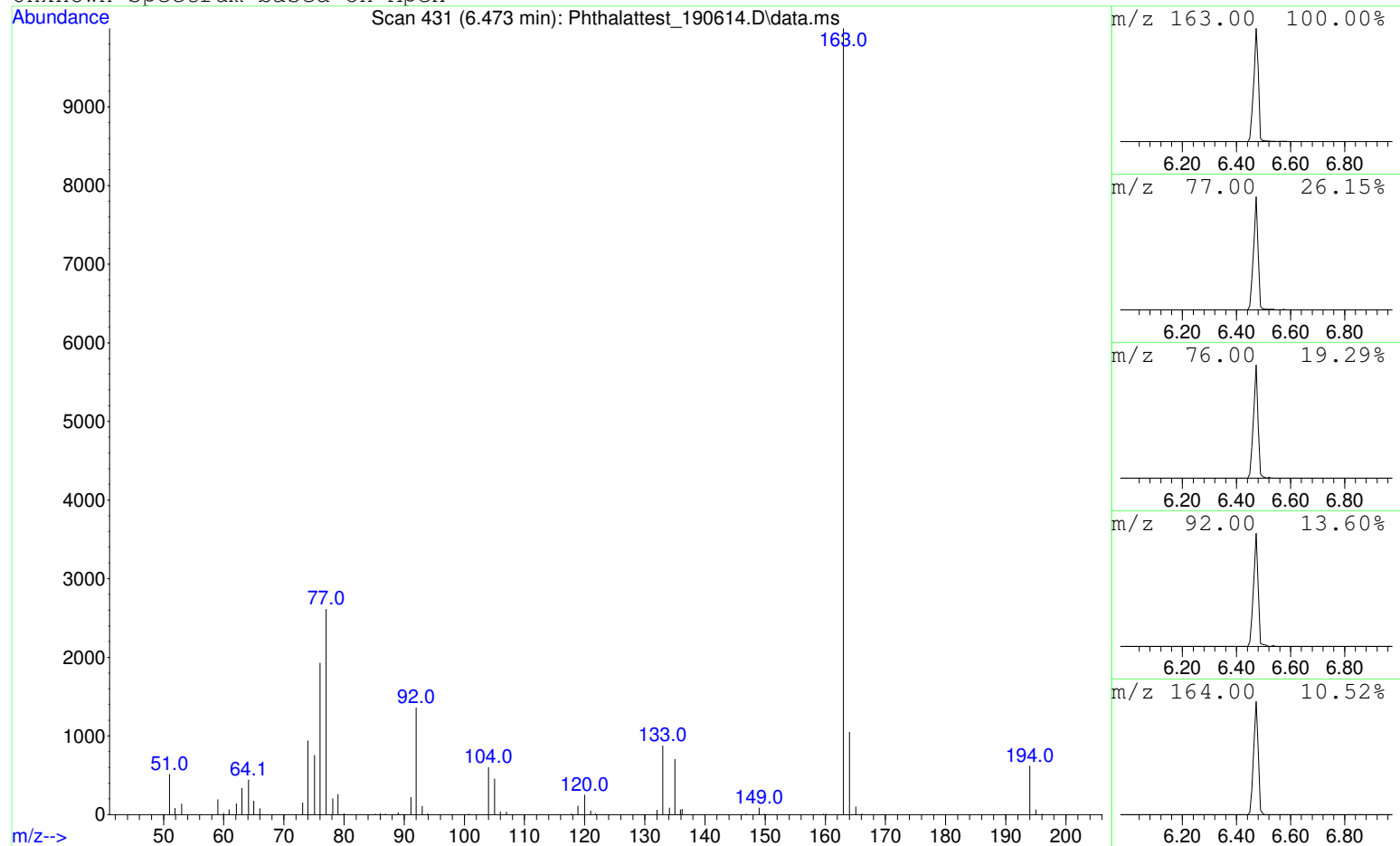
Data Path : D:\GCMS Daten\190614\  
Data File : Phthalatatest\_190614.D  
Acq On : 14 Jun 2019 12:21  
Operator : sb  
Sample : Phthalatatest\_190614  
Misc :  
ALS Vial : 149 Sample Multiplier: 1

Search Libraries: C:\DATABASE\DEMO.L Minimum Quality: 0

Unknown Spectrum: Apex  
Integration Events: ChemStation Integrator - autoint1.e



Unknown Spectrum based on Apex



Data File: D:\GCMS Daten\190614\Phthalatetest\_190614.D

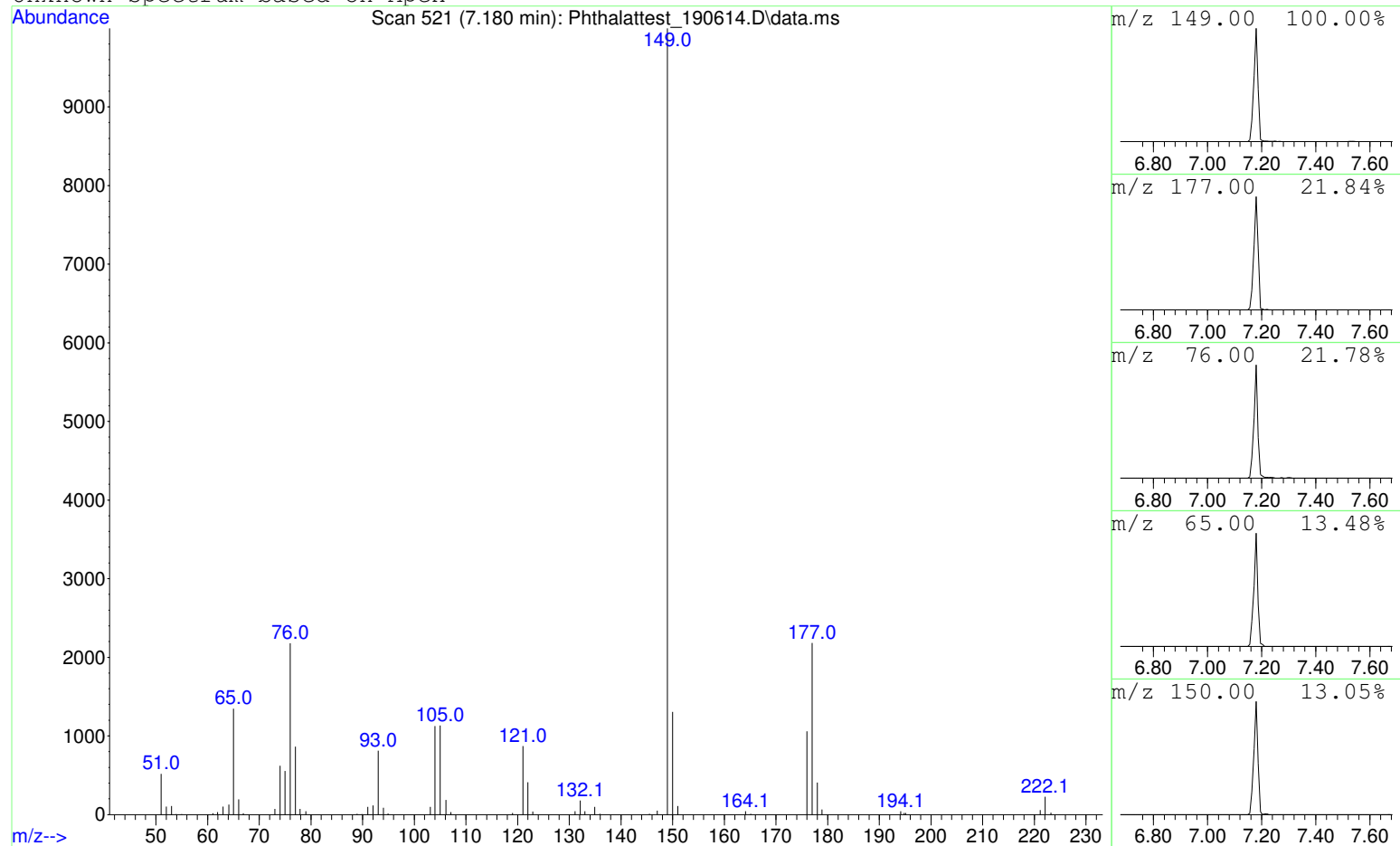
Sample : Phthalatetest\_190614

Peak Number: 1 at 6.473 min Area: 6388944 Area % 32.12

The 3 best hits from each library. Ref\# CAS\# Qual

C:\DATABASE\DEMO.L No hits were retrieved.

Unknown Spectrum based on Apex



Data File: D:\GCMS Daten\190614\Phthalatetest\_190614.D

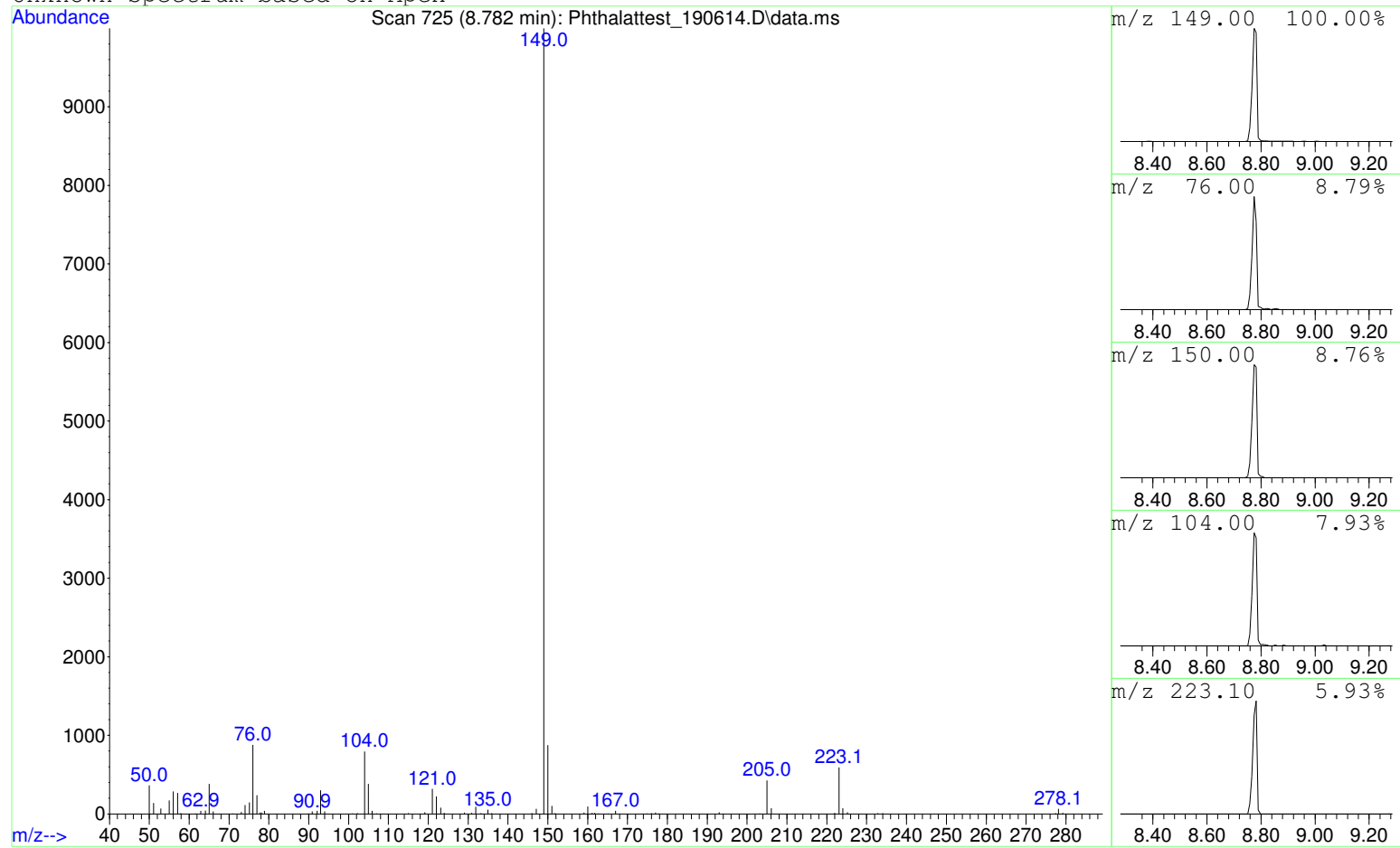
Sample : Phthalatetest\_190614

Peak Number: 2 at 7.180 min Area: 6561958 Area % 32.99

The 3 best hits from each library. Ref\# CAS\# Qual

C:\DATABASE\DEMO.L No hits were retrieved.

Unknown Spectrum based on Apex



Data File: D:\GCMS Daten\190614\Phthalatetest\_190614.D  
Sample : Phthalatetest\_190614

Peak Number: 3 at 8.782 min Area: 6940728 Area % 34.89

The 3 best hits from each library. Ref\# CAS\# Qual

C:\DATABASE\DEMO.L No hits were retrieved.