

Area Percent Report

Data Path : D:\GCMS Daten\131009\
 Data File : os-aw2.D
 Acq On : 9 Oct 2013 14:36
 Operator : JD
 Sample : os-aw1
 Misc :
 ALS Vial : 142 Sample Multiplier: 1

Integration Parameters: autoint1.e
 Integrator: ChemStation

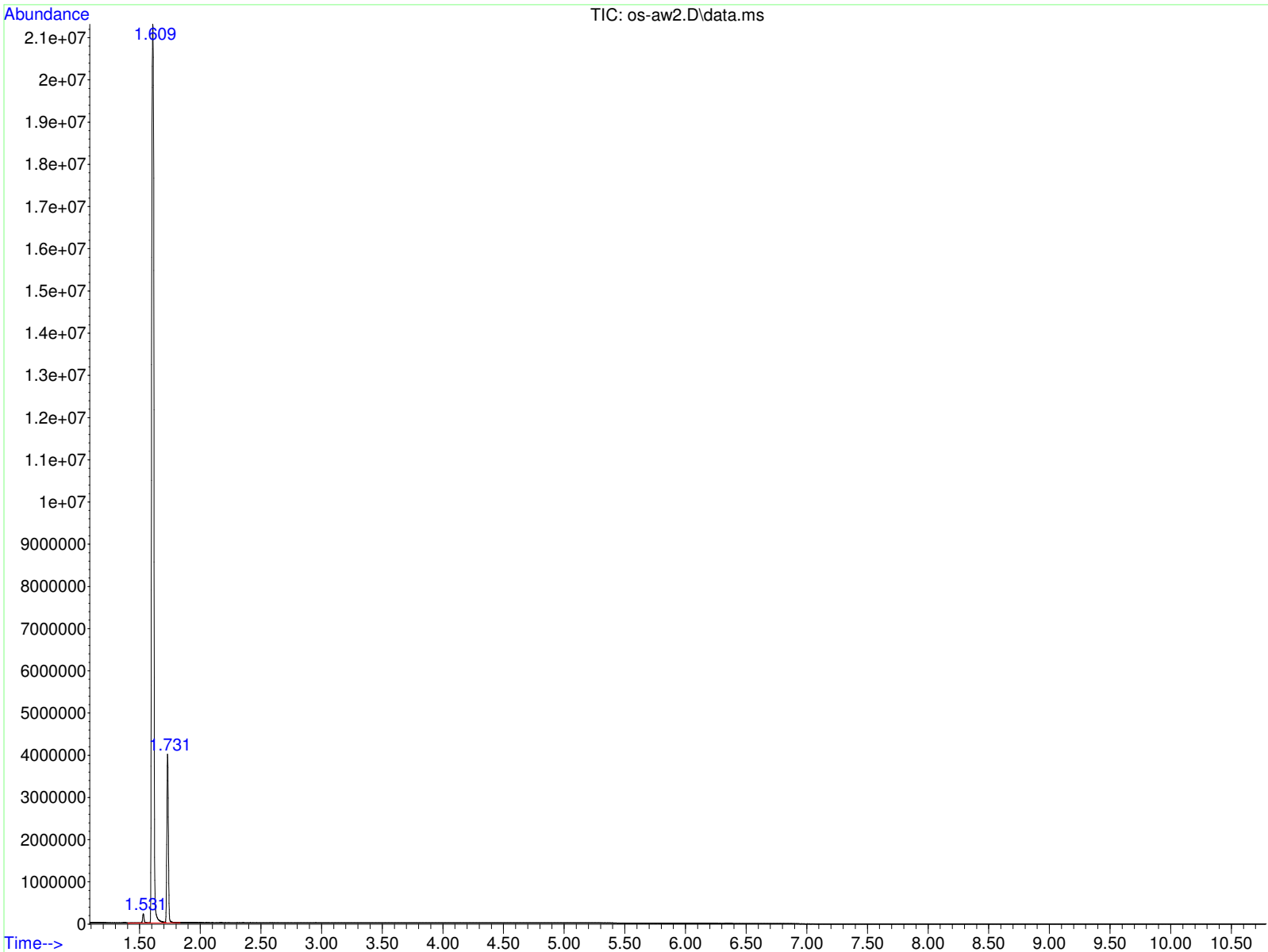
Method : D:\GCMS Daten\130927\mcsk041-1.D\STANDARD.M
 Title :

Signal : TIC: os-aw2.D\data.ms

peak #	R.T. min	first scan	max scan	last scan	PK TY	peak height	corr. area	corr. % max.	% of total
1	1.531	281	391	424	PB 3	214884	1961524	0.72%	0.636%
2	1.609	429	460	548	BV 3	21287152	271796339	100.00%	88.111%
3	1.731	548	567	653	VB	3980109	34711772	12.77%	11.253%

Sum of corrected areas: 308469635

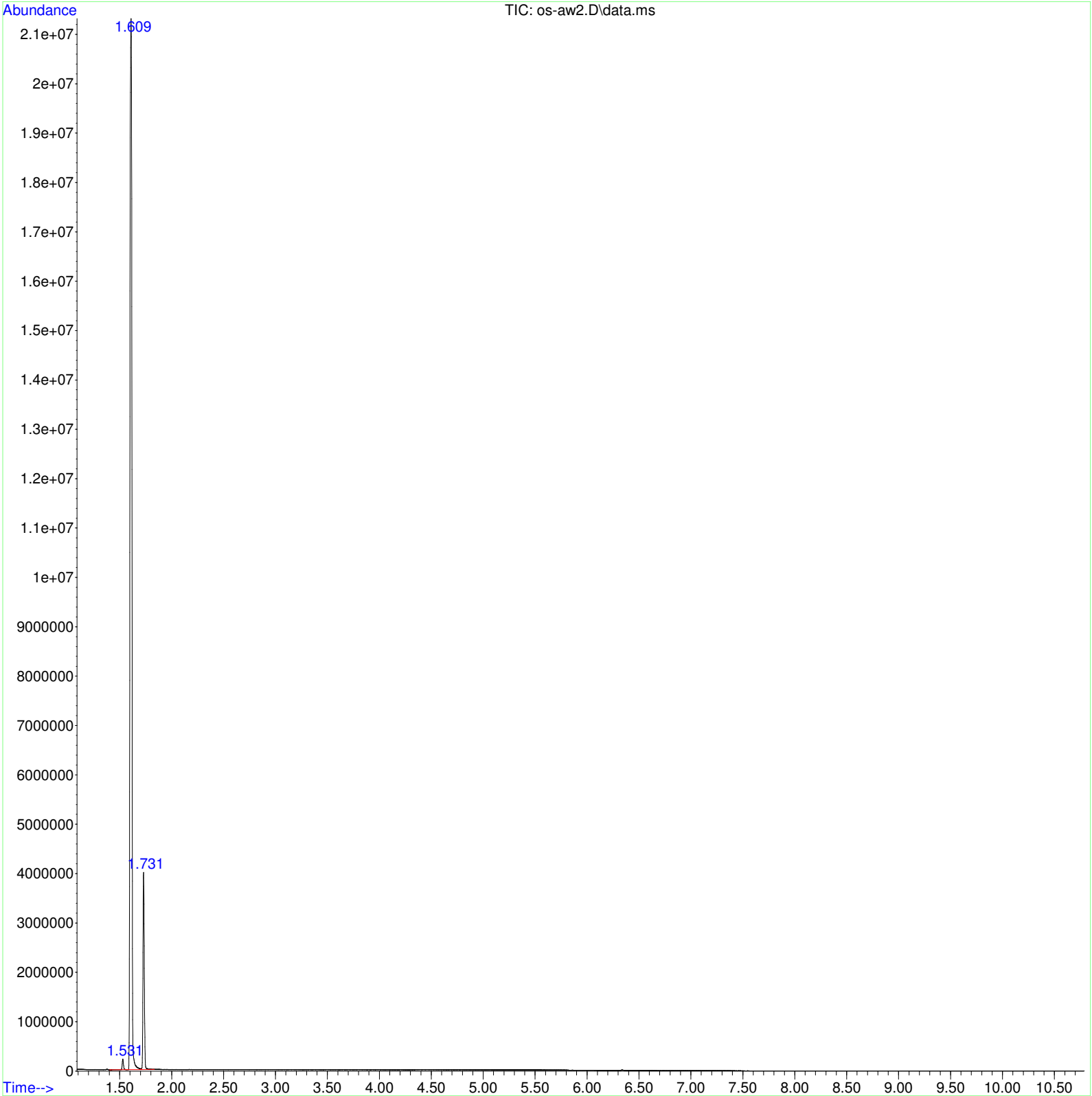
STANDARD.M Wed Oct 09 14:48:13 2013 GCMS



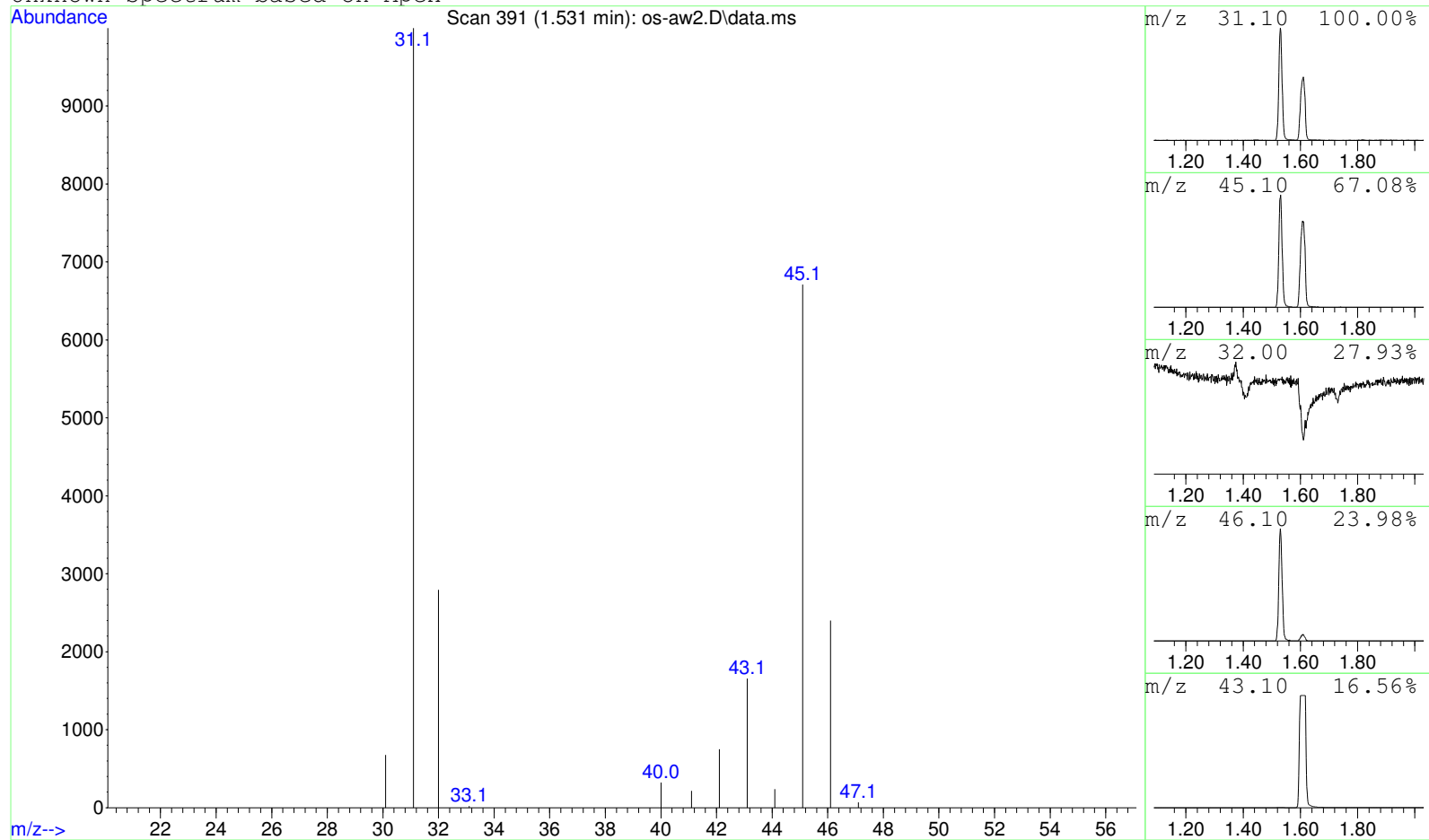
Data Path : D:\GCMS Daten\131009\
Data File : os-aw2.D
Acq On : 9 Oct 2013 14:36
Operator : JD
Sample : os-aw1
Misc :
ALS Vial : 142 Sample Multiplier: 1

Search Libraries: C:\DATABASE\DEMO.L Minimum Quality: 0

Unknown Spectrum: Apex
Integration Events: ChemStation Integrator - autoint1.e



Unknown Spectrum based on Apex



Data File: D:\GCMS Daten\131009\os-aw2.D

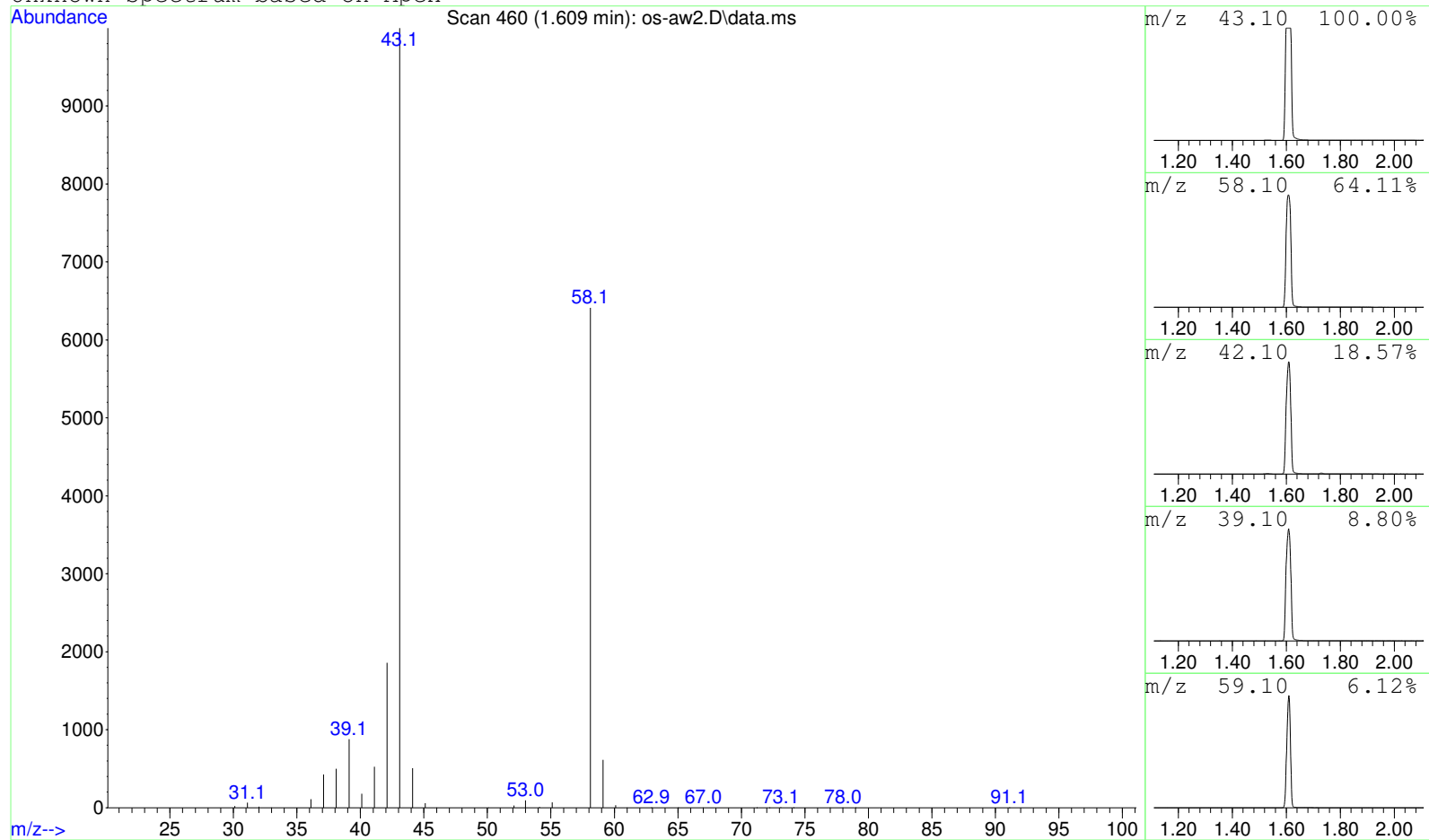
Sample : os-aw1

Peak Number: 1 at 1.531 min Area: 1961524 Area % 0.64

The 3 best hits from each library. Ref\# CAS\# Qual

C:\DATABASE\DEMO.L No hits were retrieved.

Unknown Spectrum based on Apex



Data File: D:\GCMS Daten\131009\os-aw2.D

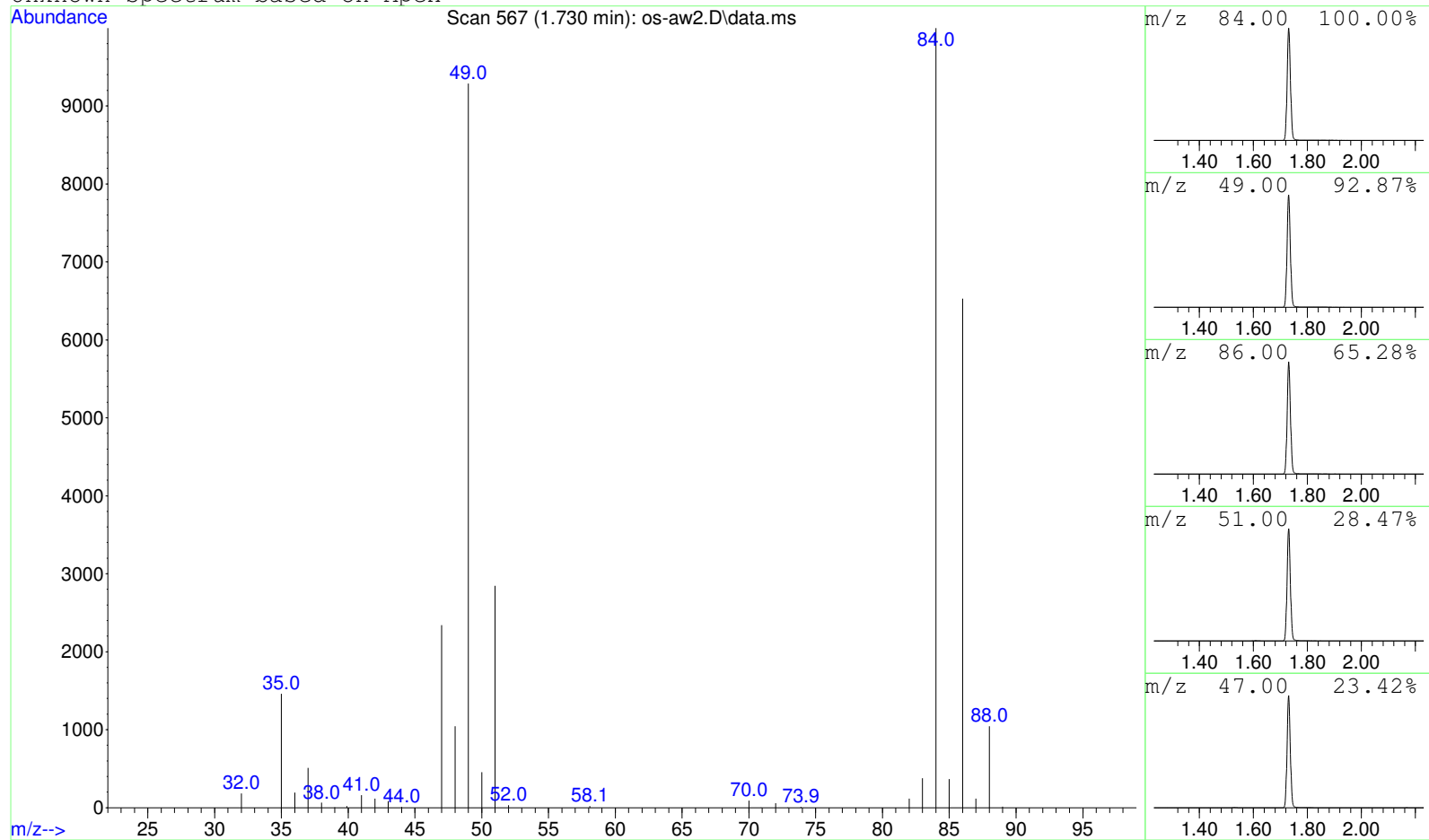
Sample : os-aw1

Peak Number: 2 at 1.609 min Area: 271796339 Area % 88.11

The 3 best hits from each library. Ref\# CAS\# Qual

C:\DATABASE\DEMO.L No hits were retrieved.

Unknown Spectrum based on Apex



Data File: D:\GCMS Daten\131009\os-aw2.D

Sample : os-aw1

Peak Number: 3 at 1.730 min Area: 34711772 Area % 11.25

The 3 best hits from each library.

Ref\# CAS\# Qual

C:\DATABASE\DEMO.L No hits were retrieved.