

Area Percent Report

Data Path : D:\GCMS Daten\131009\
Data File : MeOH1.D
Acq On : 9 Oct 2013 14:53
Operator : JD
Sample : Meoh
Misc :
ALS Vial : 143 Sample Multiplier: 1

Integration Parameters: autoint1.e
Integrator: ChemStation

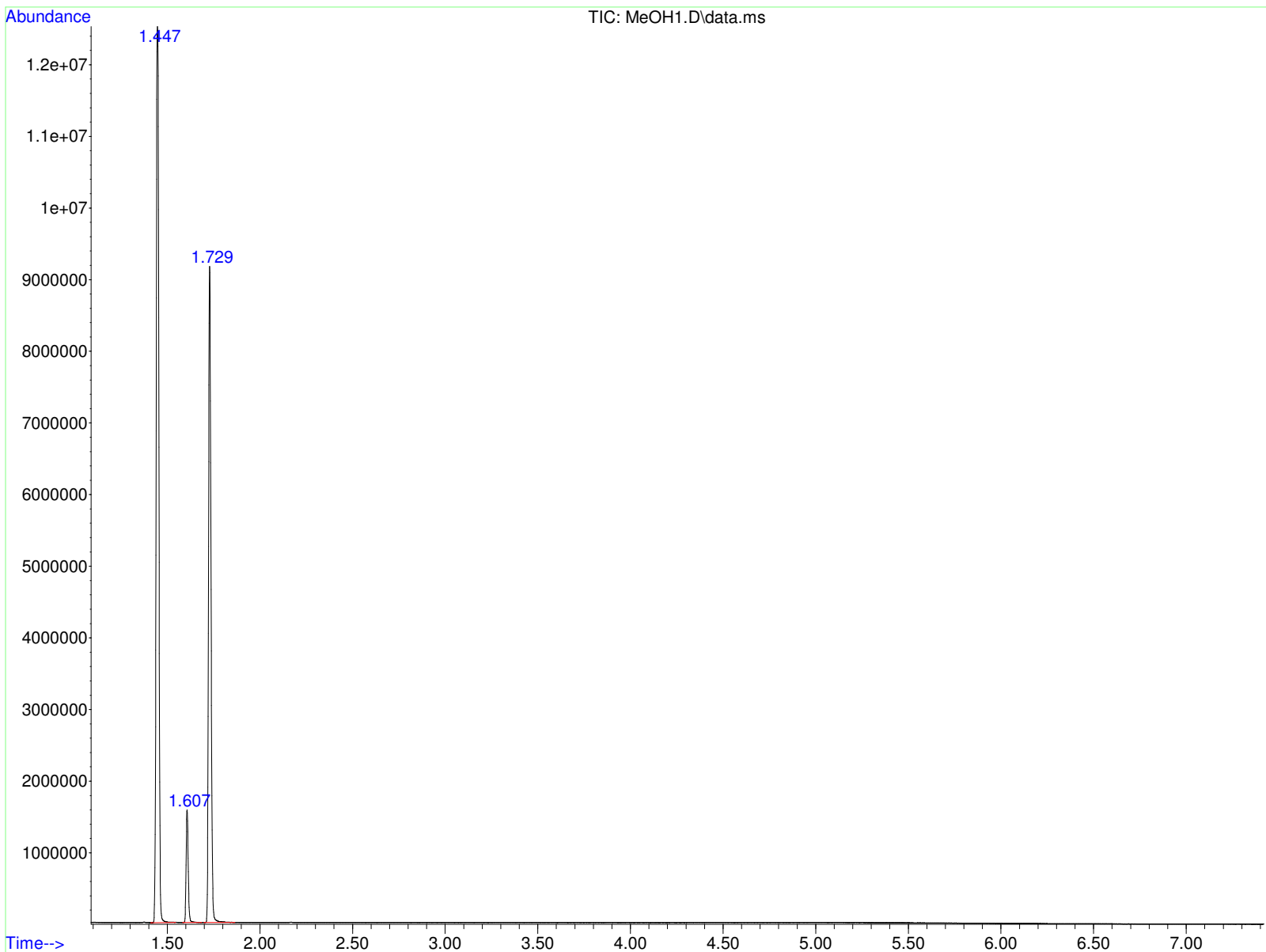
Method : D:\GCMS Daten\130927\mcsk041-1.D\STANDARD.M
Title :

Signal : TIC: MeOH1.D\data.ms

peak #	R.T. min	first scan	max scan	last scan	PK TY	peak height	corr. area	corr. % max.	% of total
1	1.447	286	318	400	BB 2	12499190	123885364	100.00%	56.270%
2	1.607	438	458	524	BB	1565253	12281395	9.91%	5.578%
3	1.729	538	566	681	BB	9130628	83993880	67.80%	38.151%

Sum of corrected areas: 220160639

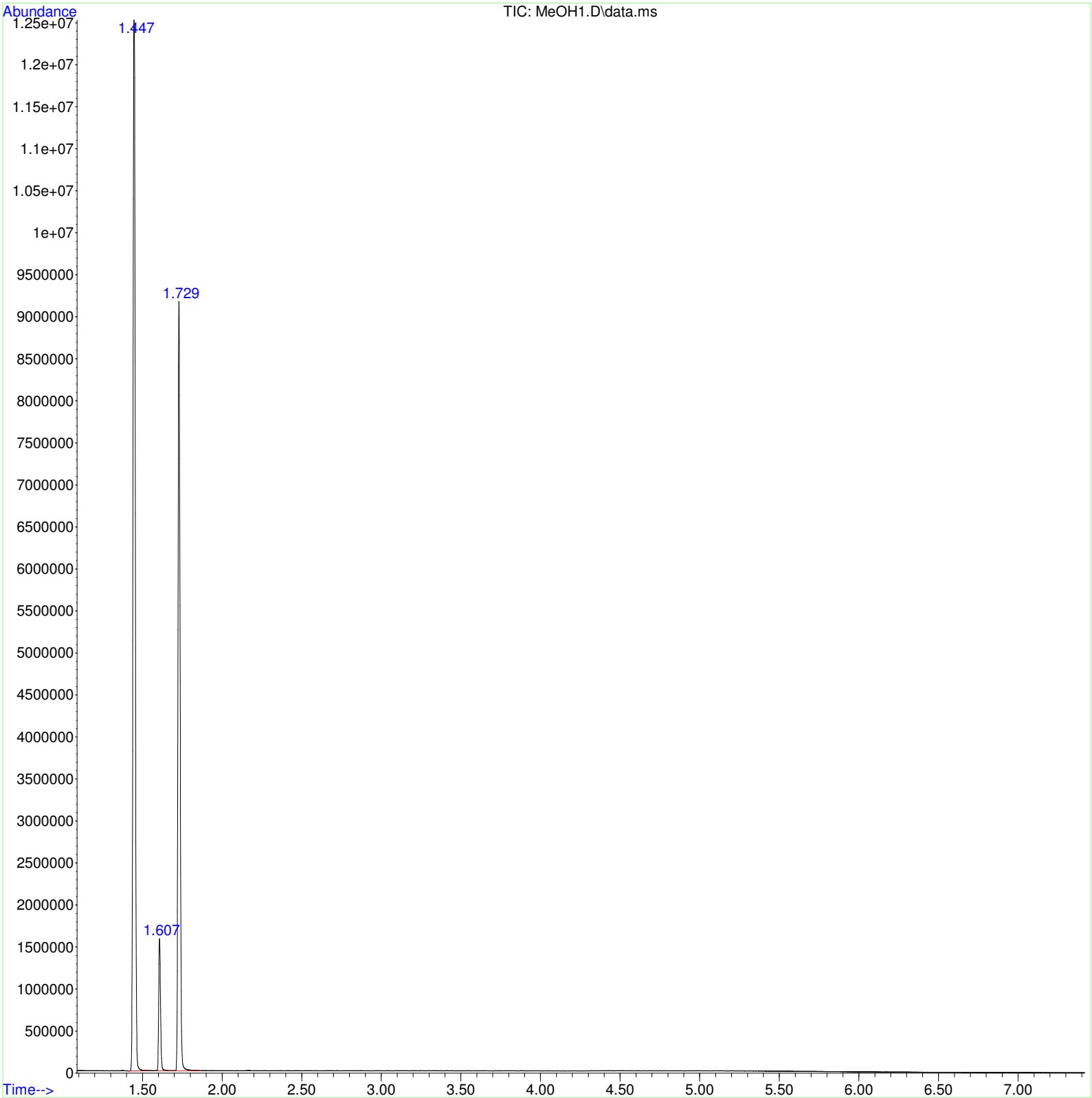
STANDARD.M Wed Oct 09 15:01:22 2013 GCMS



Data Path : D:\GCMS Daten\131009\
Data File : MeOH1.D
Acq On : 9 Oct 2013 14:53
Operator : JD
Sample : Meoh
Misc :
ALS Vial : 143 Sample Multiplier: 1

Search Libraries: C:\DATABASE\DEMO.L Minimum Quality: 0

Unknown Spectrum: Apex
Integration Events: ChemStation Integrator - autoint1.e



Unknown Spectrum based on Apex



Data File: D:\GCMS Daten\131009\MeOH1.D

Sample : Meoh

Peak Number: 1 at 1.448 min Area: 123885364 Area % 56.27

The 3 best hits from each library. Ref\# CAS\# Qual

C:\DATABASE\DEMO.L No hits were retrieved.

Unknown Spectrum based on Apex



Data File: D:\GCMS Daten\131009\MeOH1.D

Sample : Meoh

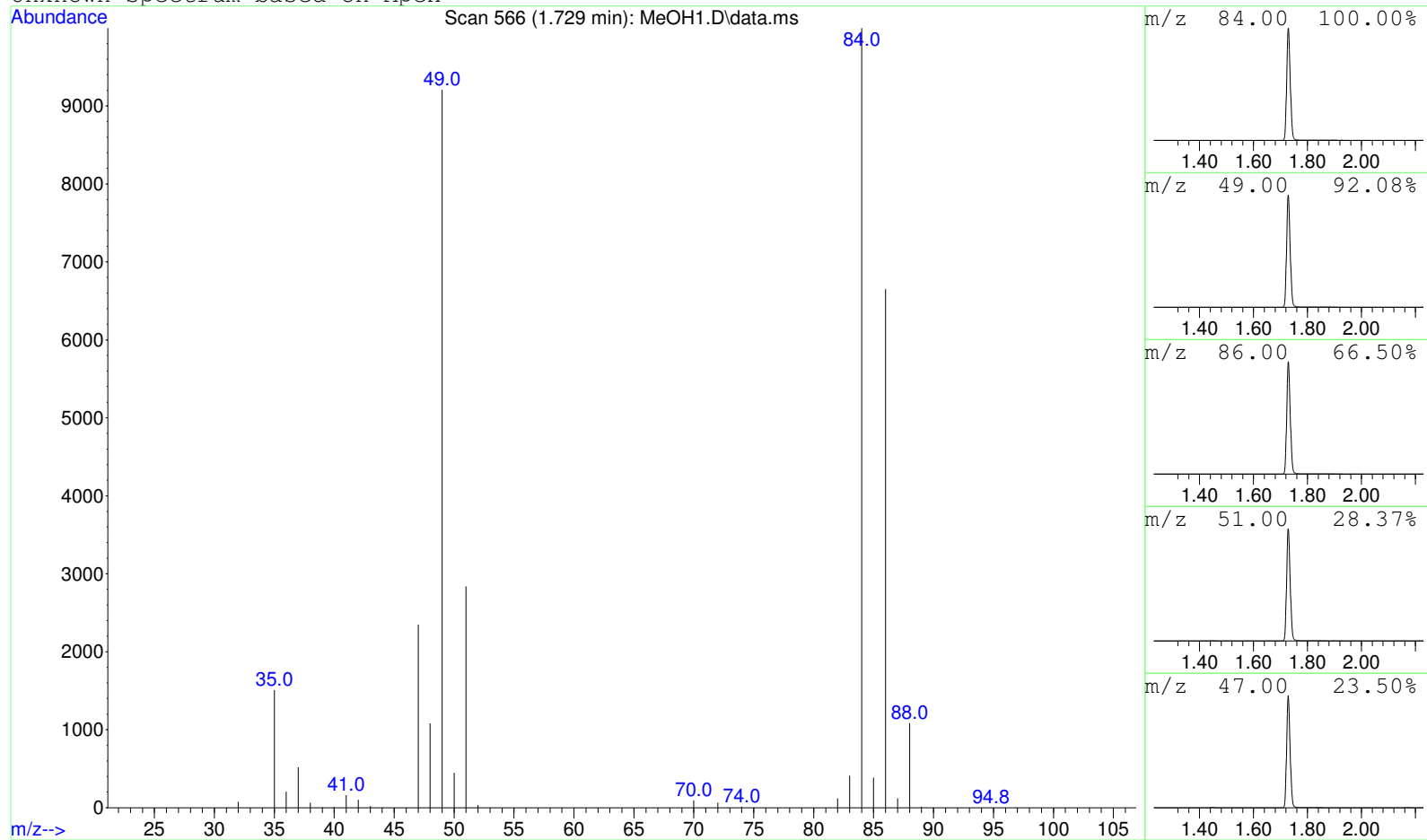
Peak Number: 2 at 1.607 min Area: 12281395 Area % 5.58

The 3 best hits from each library.

Ref\# CAS\# Qual

C:\DATABASE\DEMO.L No hits were retrieved.

Unknown Spectrum based on Apex



Data File: D:\GCMS Daten\131009\MeOH1.D

Sample : Meoh

Peak Number: 3 at 1.729 min Area: 83993880 Area % 38.15

The 3 best hits from each library. Ref\# CAS\# Qual

C:\DATABASE\DEMO.L No hits were retrieved.