

Area Percent Report

Data Path : D:\GCMS Daten\20121205\
Data File : FPMB003.D
Acq On : 5 Dec 2012 14:55
Operator : jd
Sample : fpmb003
Misc :
ALS Vial : 42 Sample Multiplier: 1

Integration Parameters: autoint1.e
Integrator: ChemStation

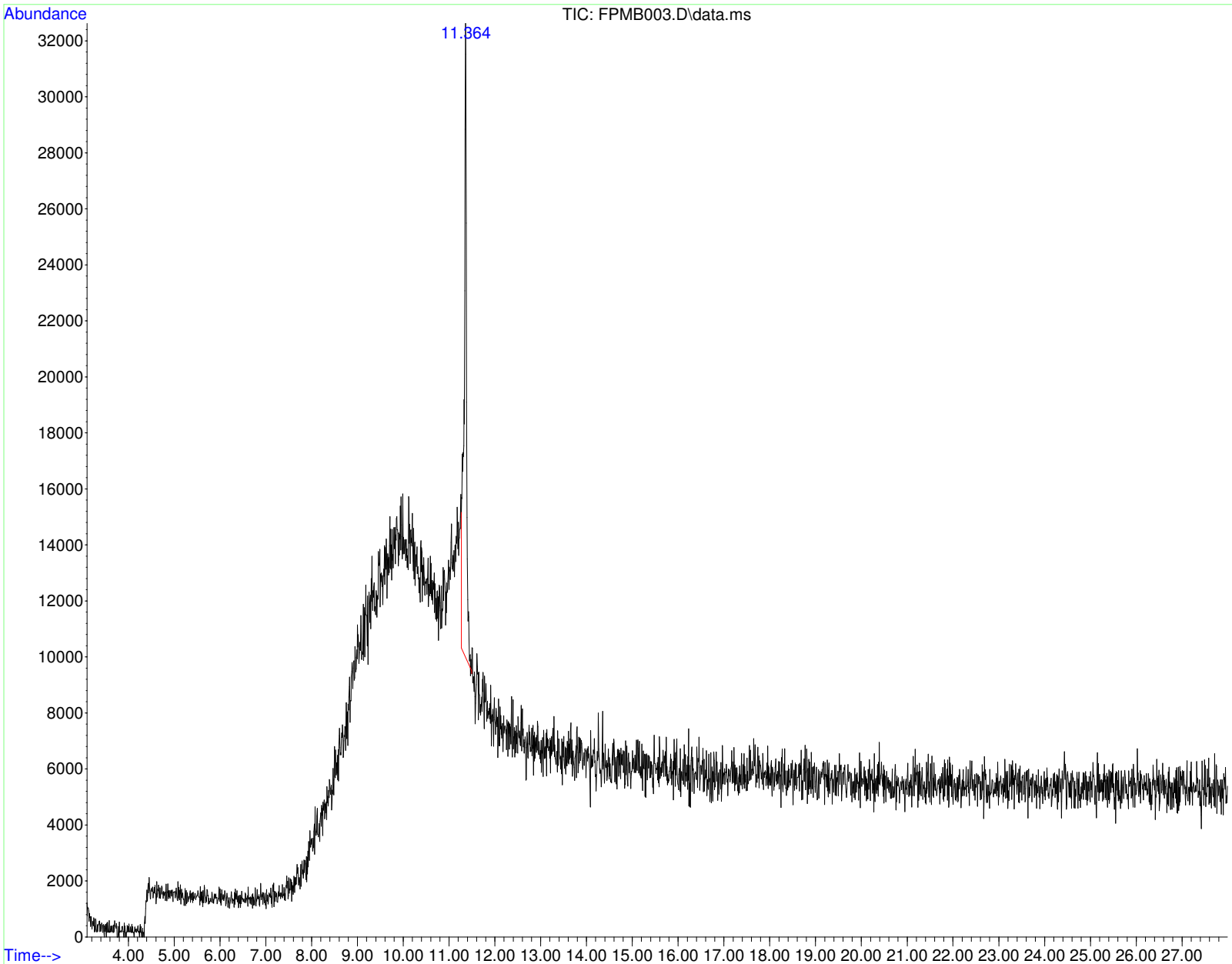
Method : C:\msdchem\1\methods\Standard.M
Title :

Signal : TIC: FPMB003.D\data.ms

peak #	R.T. min	first scan	max scan	last scan	PK TY	peak height	corr. area	corr. % max.	% of total
1	11.364	1042	1054	1070	VV 6	22411	866529	100.00%	100.000%

Sum of corrected areas: 866529

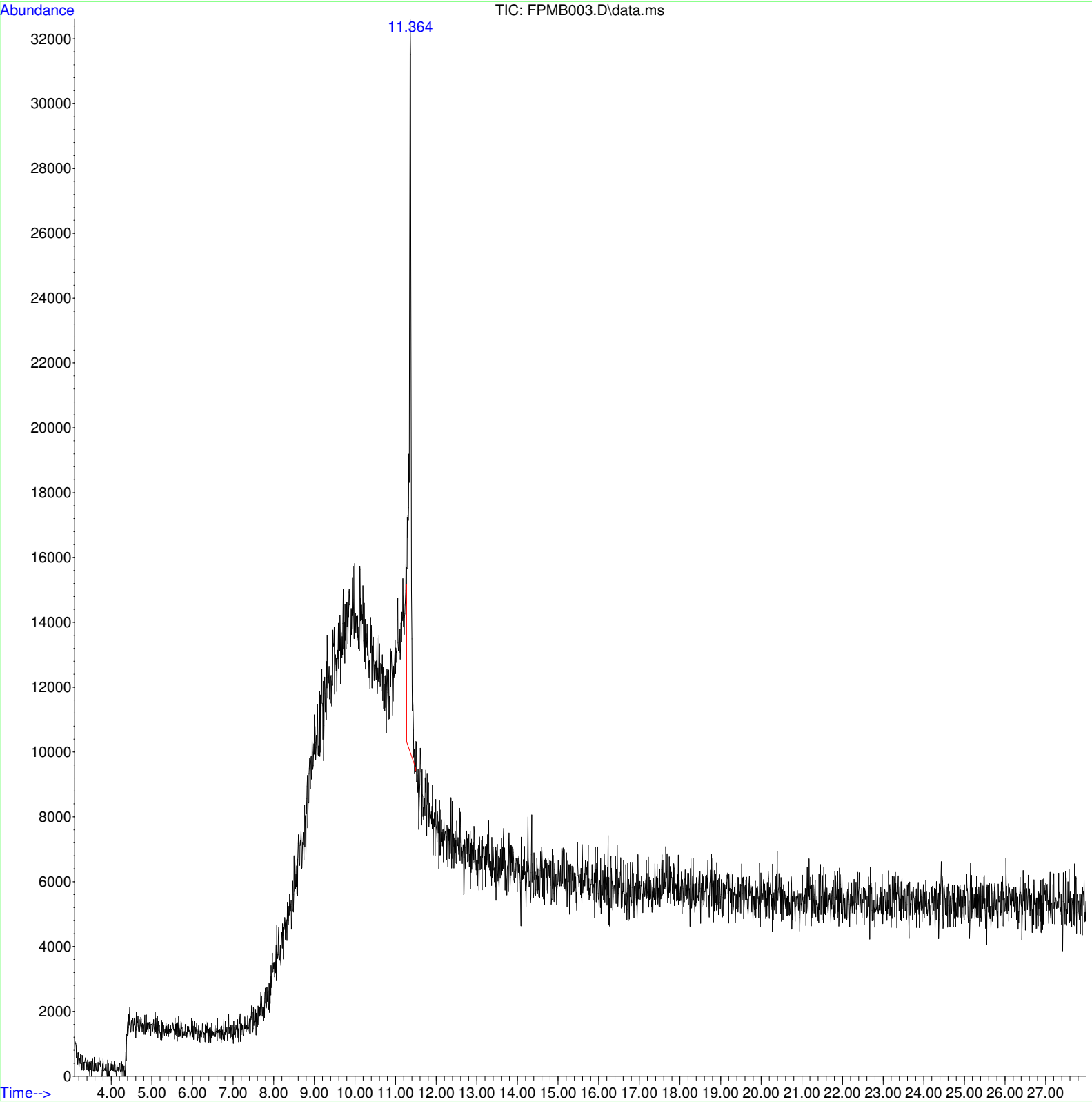
Standard.M Wed Dec 05 15:32:02 2012 GCMS



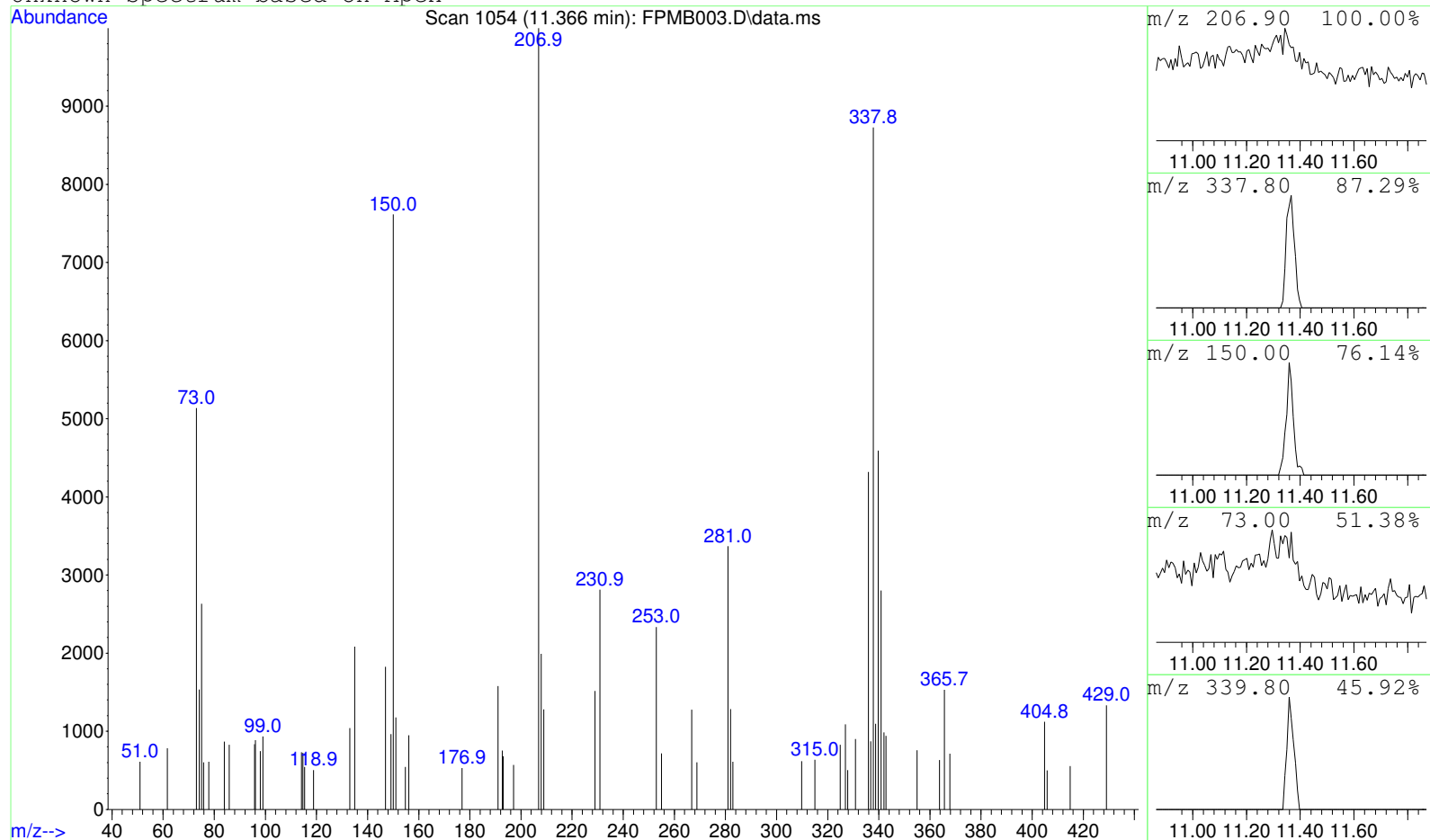
Data Path : D:\GCMS Daten\20121205\
Data File : FPMB003.D
Acq On : 5 Dec 2012 14:55
Operator : jd
Sample : fpmb003
Misc :
ALS Vial : 42 Sample Multiplier: 1

Search Libraries: C:\Database\OC_LIB.L Minimum Quality: 0

Unknown Spectrum: Apex
Integration Events: ChemStation Integrator - autoint1.e



Unknown Spectrum based on Apex



Data File: D:\GCMS Daten\20121205\FPMB003.D

Sample : fpmb003

Peak Number: 1 at 11.366 min Area: 866529 Area % 100.00

The 3 best hits from each library.

Ref\# CAS\# Qual

C:\Database\OC_LIB.L No hits were retrieved.