

Area Percent Report

Data Path : D:\GCMS Daten\130524\
 Data File : cpbj261_80_280.D
 Acq On : 24 May 2013 12:38
 Operator : JD
 Sample : cpbj261
 Misc :
 ALS Vial : 2 Sample Multiplier: 1

Integration Parameters: autoint1.e
 Integrator: ChemStation

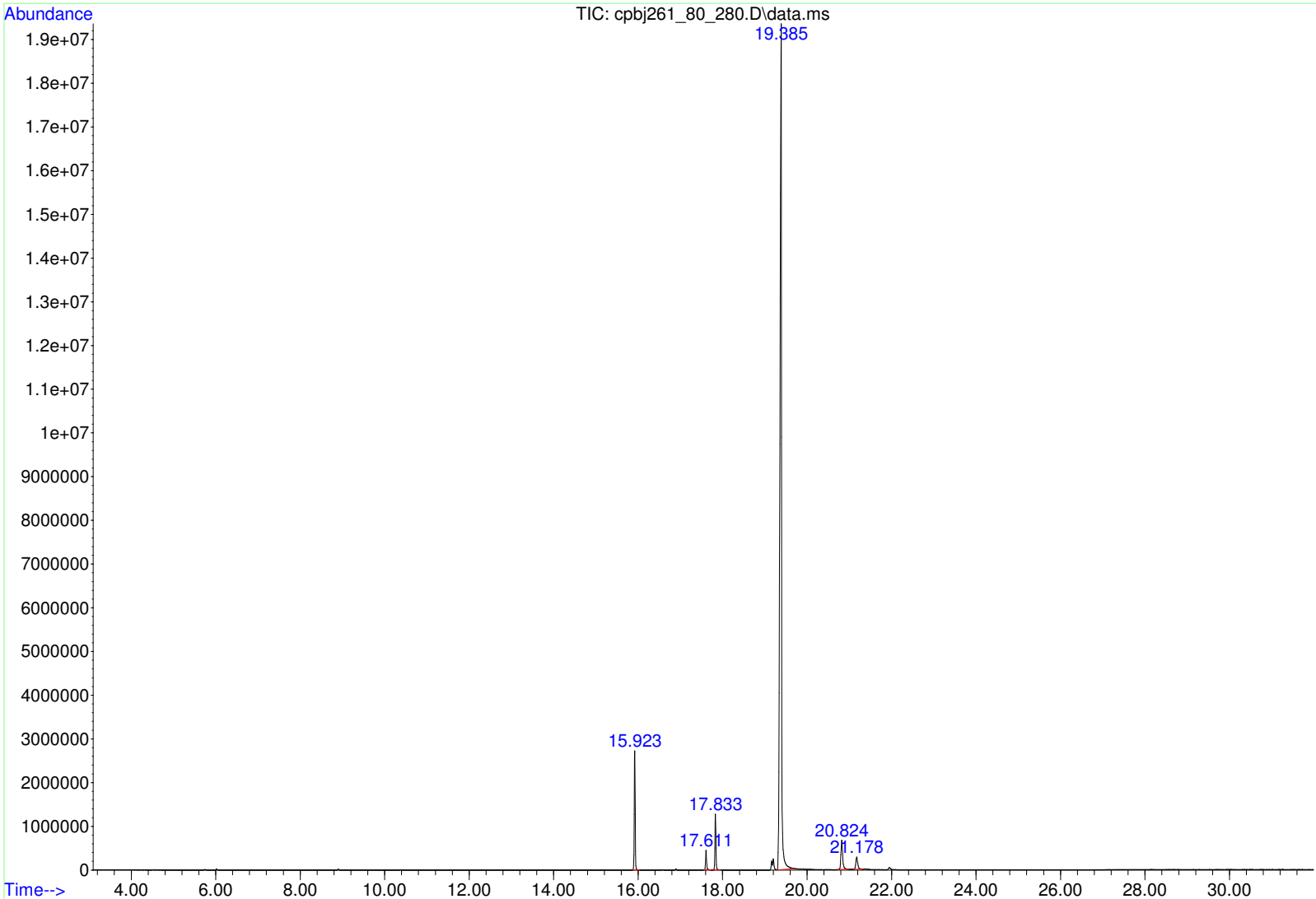
Method : D:\GCMS Daten\130522\ocafk360a.D\STANDARD.M
 Title :

Signal : TIC: cpbj261_80_280.D\data.ms

peak #	R.T. min	first scan	max scan	last scan	PK TY	peak height	corr. area	corr. % max.	% of total
1	15.923	1628	1634	1645	BB	2692711	42210399	8.18%	6.867%
2	17.611	1844	1849	1861	BB	456547	7688628	1.49%	1.251%
3	17.833	1870	1877	1890	BB	1232112	20636059	4.00%	3.357%
4	19.385	2062	2075	2114	BB	18974956	516203990	100.00%	83.983%
5	20.824	2245	2258	2277	BB	673875	18971553	3.68%	3.087%
6	21.178	2294	2303	2320	BB 2	284161	8945028	1.73%	1.455%

Sum of corrected areas: 614655656

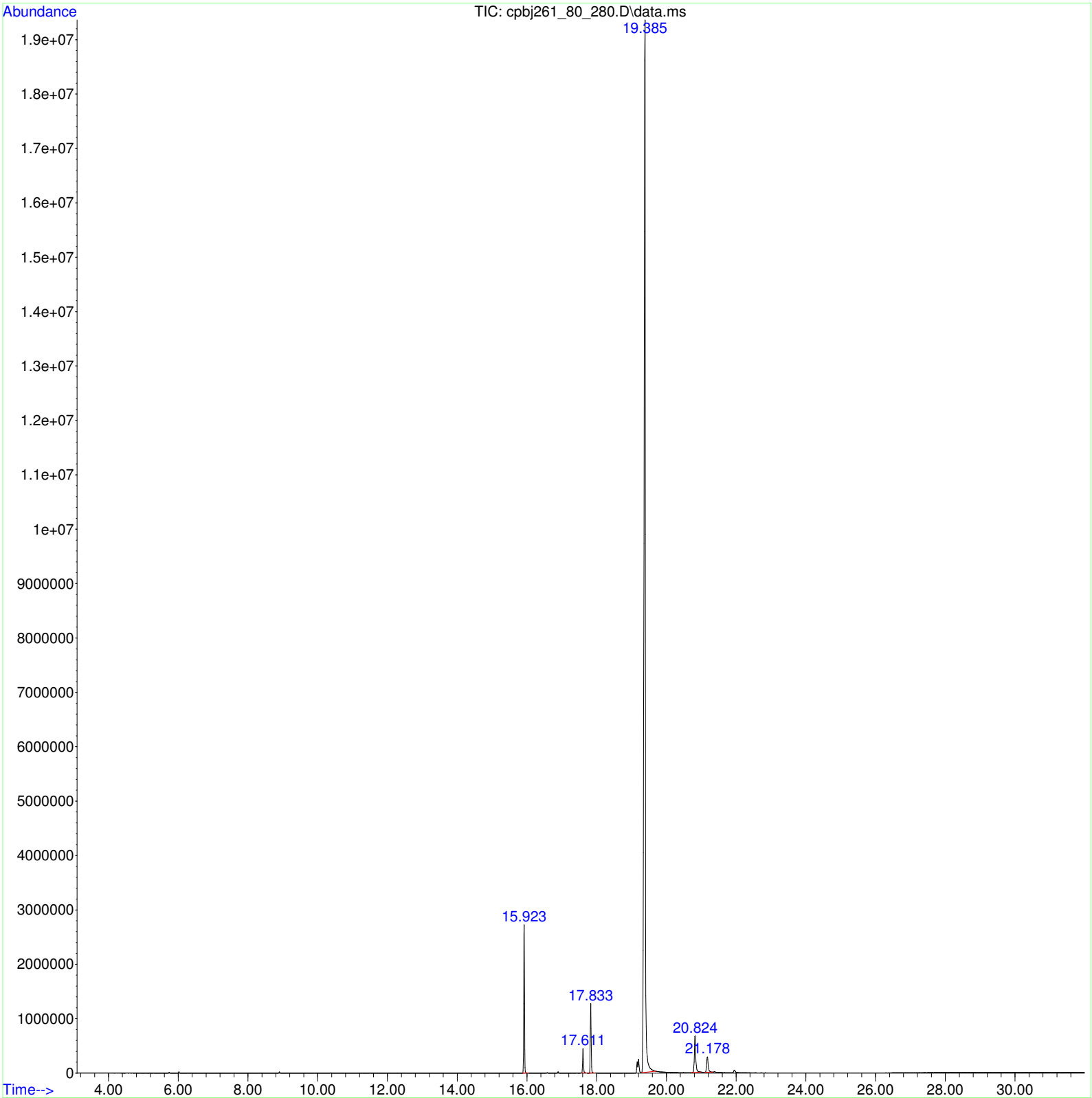
STANDARD.M Fri May 24 13:18:20 2013 GCMS



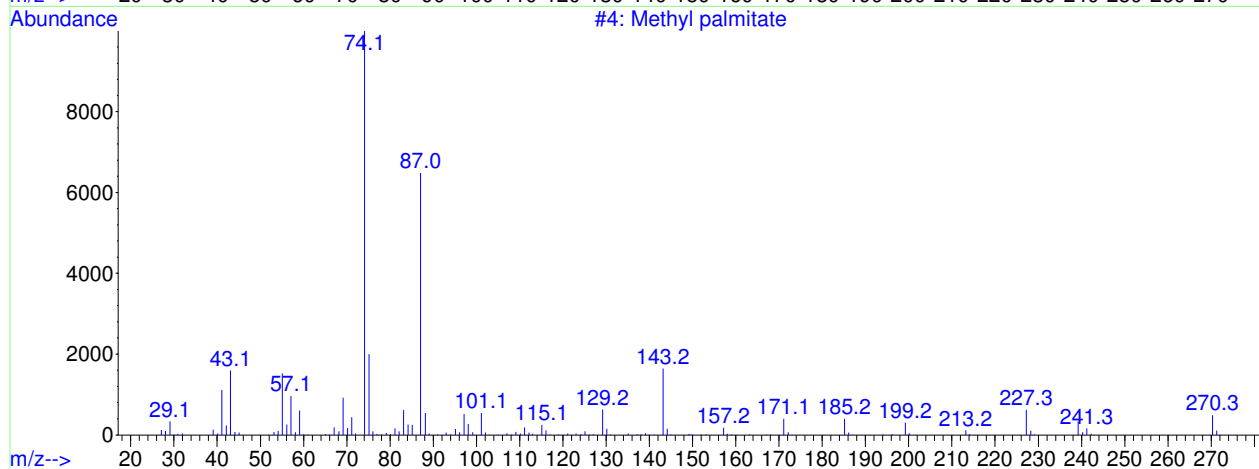
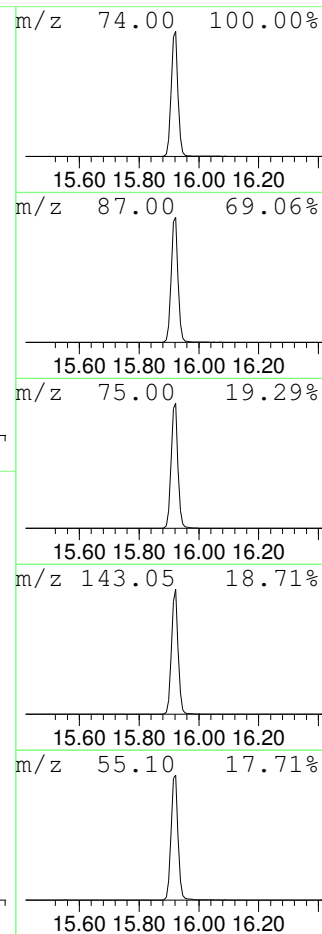
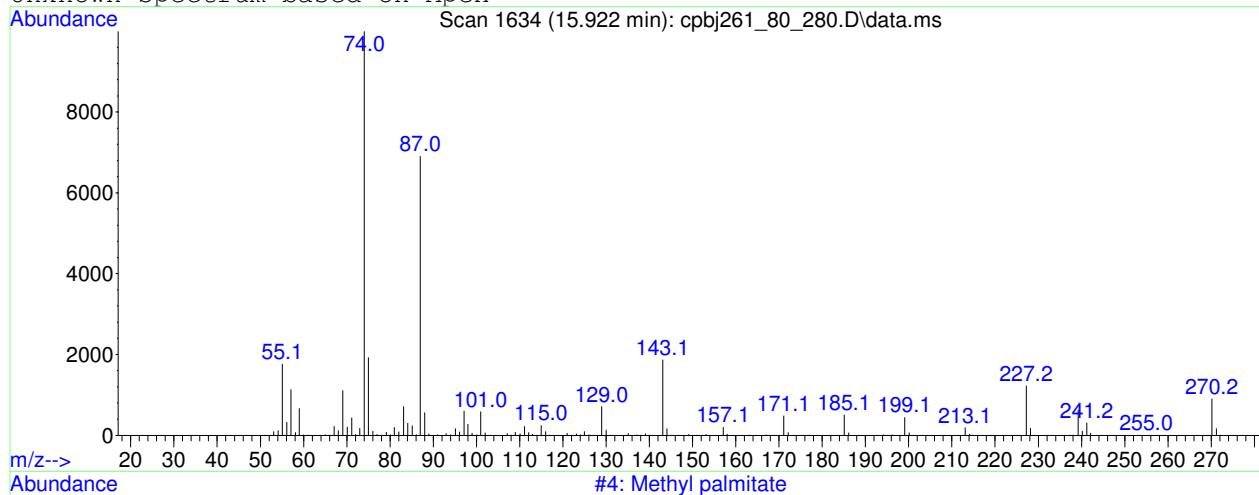
Data Path : D:\GCMS Daten\130524\
Data File : cpbj261_80_280.D
Acq On : 24 May 2013 12:38
Operator : JD
Sample : cpbj261
Misc :
ALS Vial : 2 Sample Multiplier: 1

Search Libraries: C:\DATABASE\DEMO.L Minimum Quality: 0

Unknown Spectrum: Apex
Integration Events: ChemStation Integrator - autoint1.e



Unknown Spectrum based on Apex



Data File: D:\GCMS Daten\130524\cpbj261_80_280.D

Sample : cpbj261

Peak Number: 1 at 15.922 min Area: 42210399 Area % 6.87

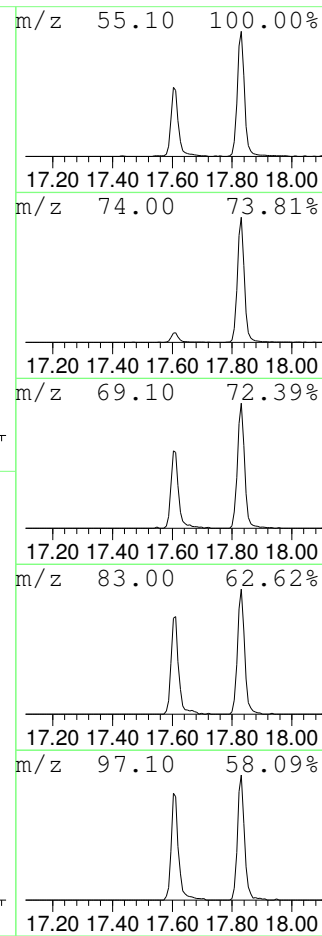
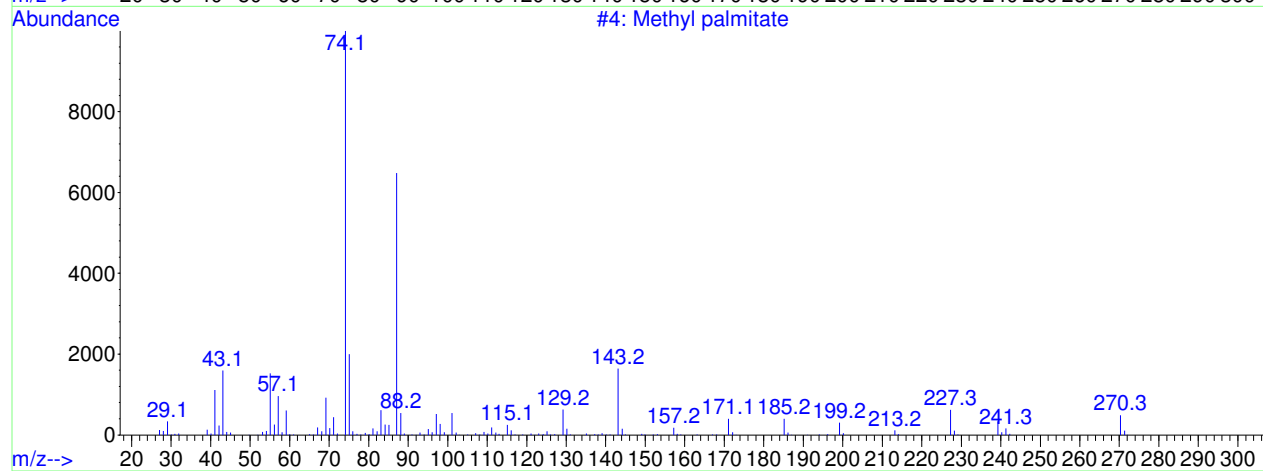
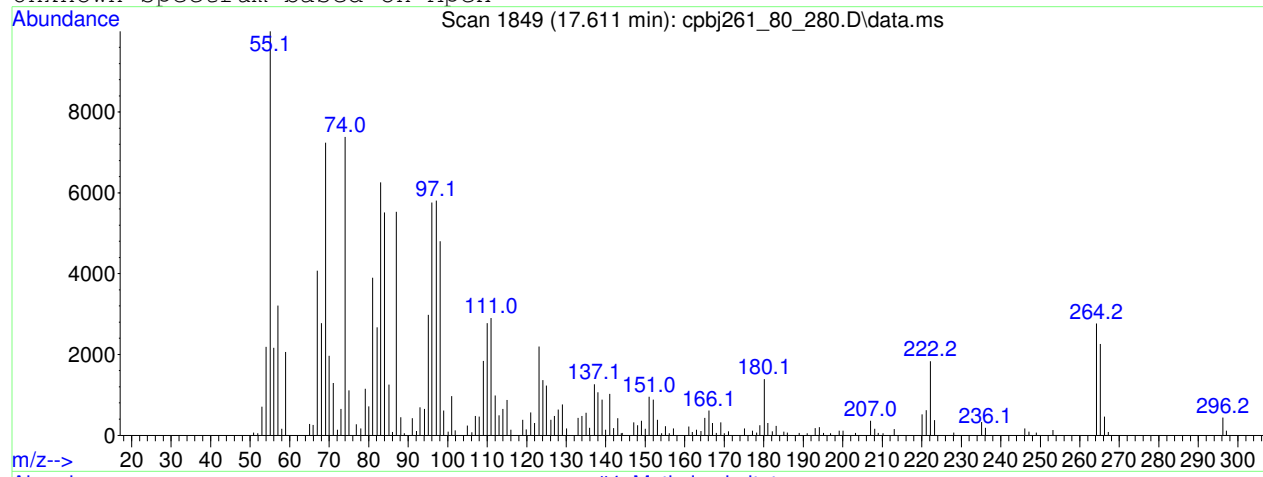
The 3 best hits from each library.

Ref\# CAS\# Qual

C:\DATABASE\DEMO.L
1 Methyl palmitate

4 000112-39-0 99

Unknown Spectrum based on Apex



Data File: D:\GCMS Daten\130524\cpbj261_80_280.D

Sample : cpbj261

Peak Number: 2 at 17.611 min Area: 7656231 Area % 1.25

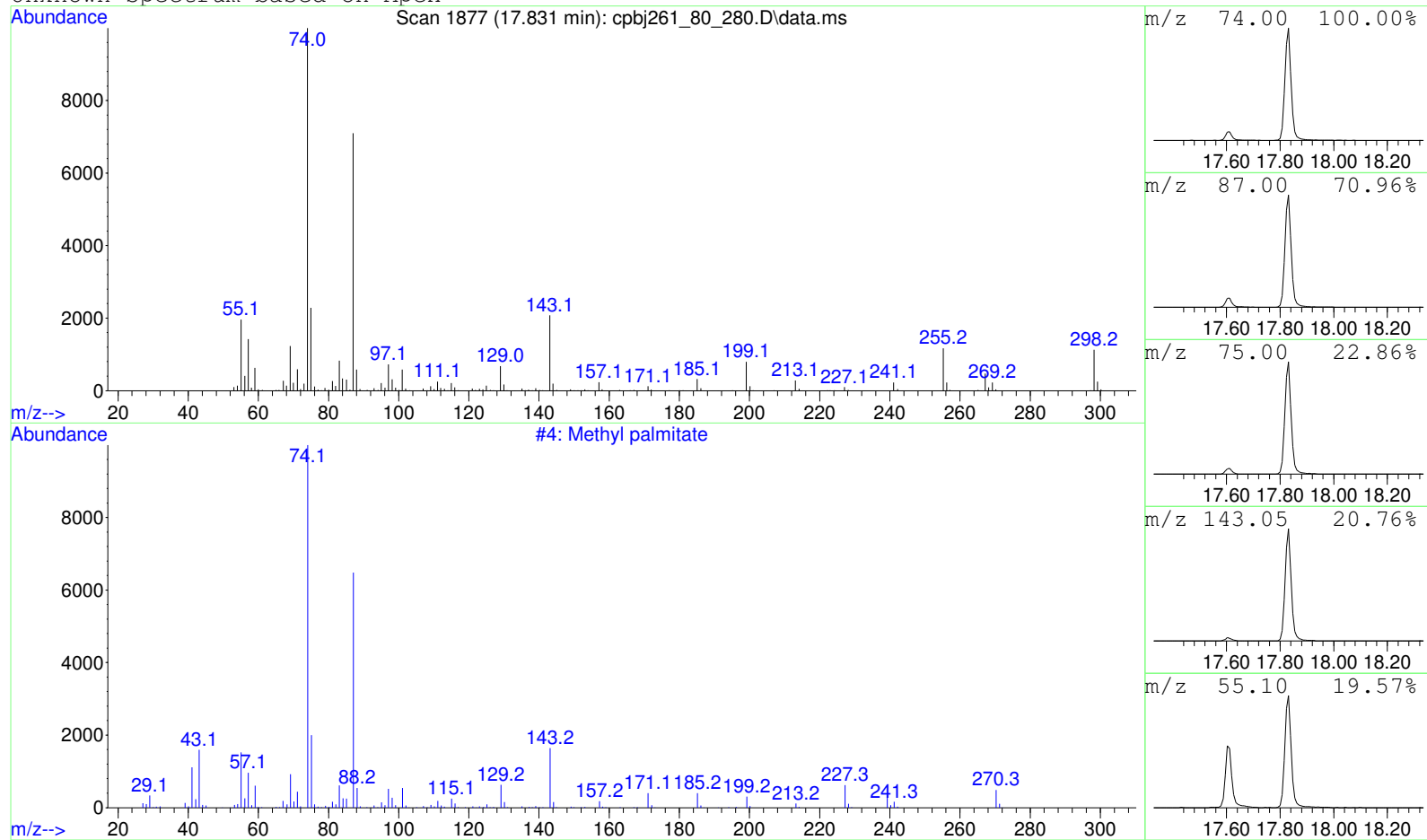
The 3 best hits from each library.

Ref\# CAS\# Qual

C:\DATABASE\DEMO.L
1 Methyl palmitate

4 000112-39-0 4

Unknown Spectrum based on Apex



Data File: D:\GCMS Daten\130524\cpbj261_80_280.D

Sample : cpbj261

Peak Number: 3 at 17.831 min Area: 20636059 Area % 3.36

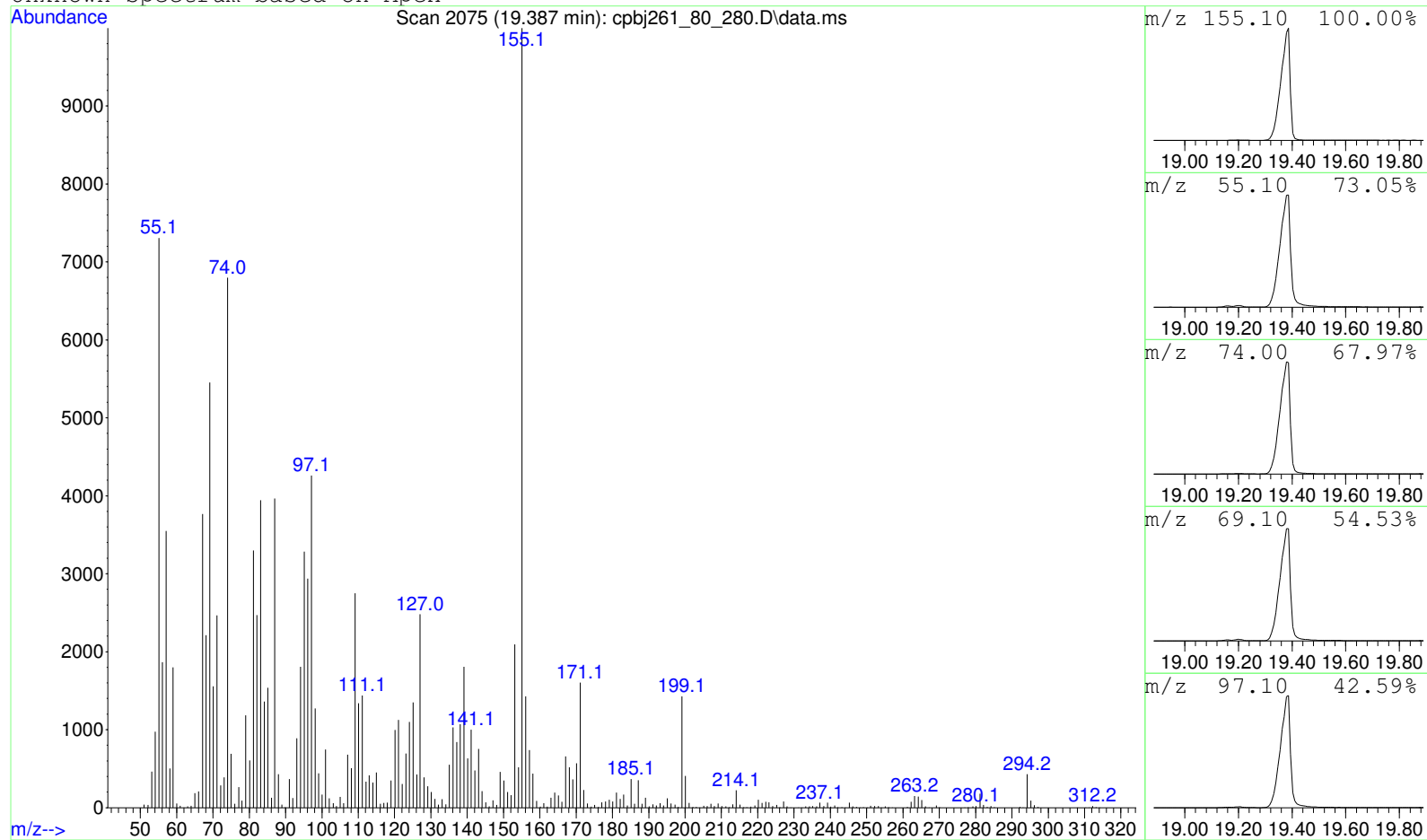
The 3 best hits from each library.

Ref\# CAS\# Qual

C:\DATABASE\DEMO.L
1 Methyl palmitate

4 000112-39-0 80

Unknown Spectrum based on Apex



Data File: D:\GCMS Daten\130524\cpbj261_80_280.D

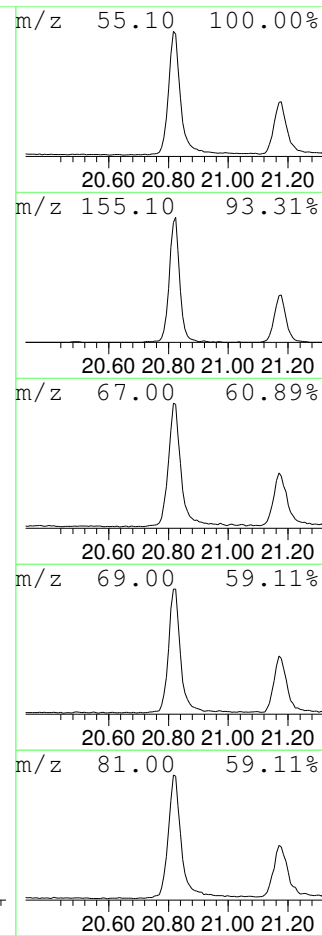
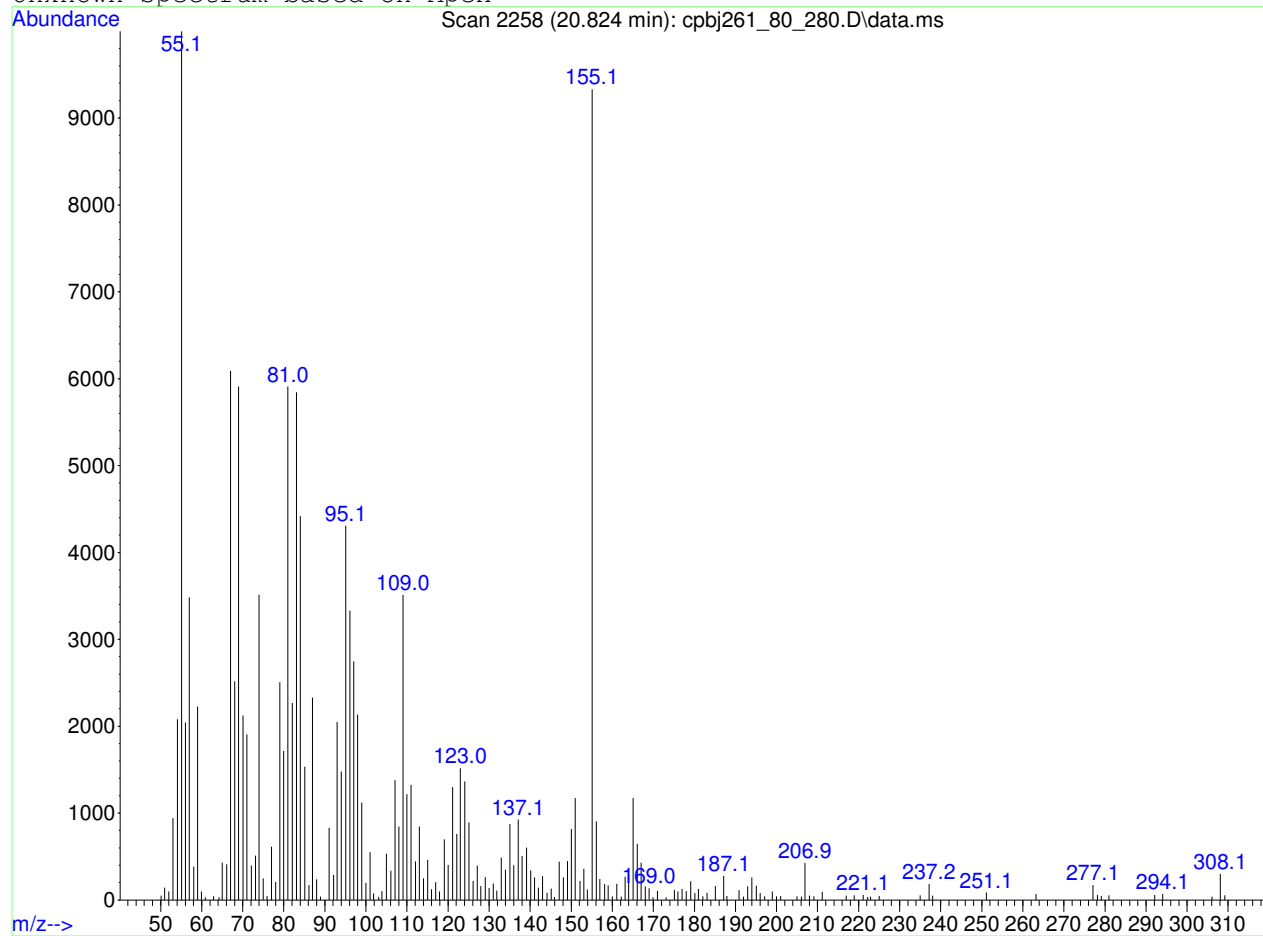
Sample : cpbj261

Peak Number: 4 at 19.387 min Area: 516203990 Area % 83.99

The 3 best hits from each library. Ref\# CAS\# Qual

C:\DATABASE\DEMO.L No hits were retrieved.

Unknown Spectrum based on Apex



Data File: D:\GCMS Daten\130524\cpbj261_80_280.D

Sample : cpbj261

Peak Number: 5 at 20.824 min Area: 18971553 Area % 3.09

The 3 best hits from each library.

Ref\#

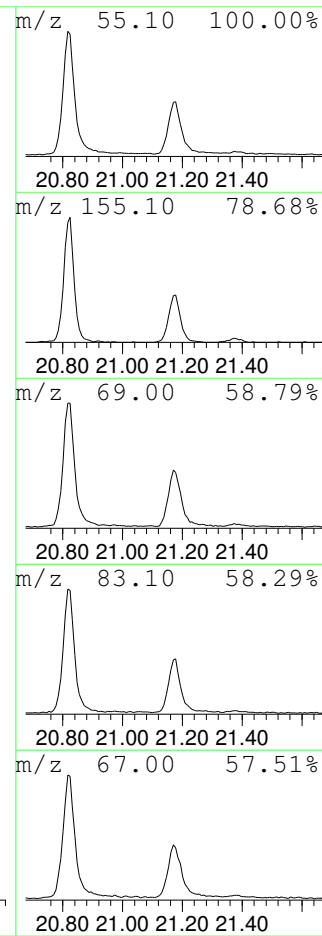
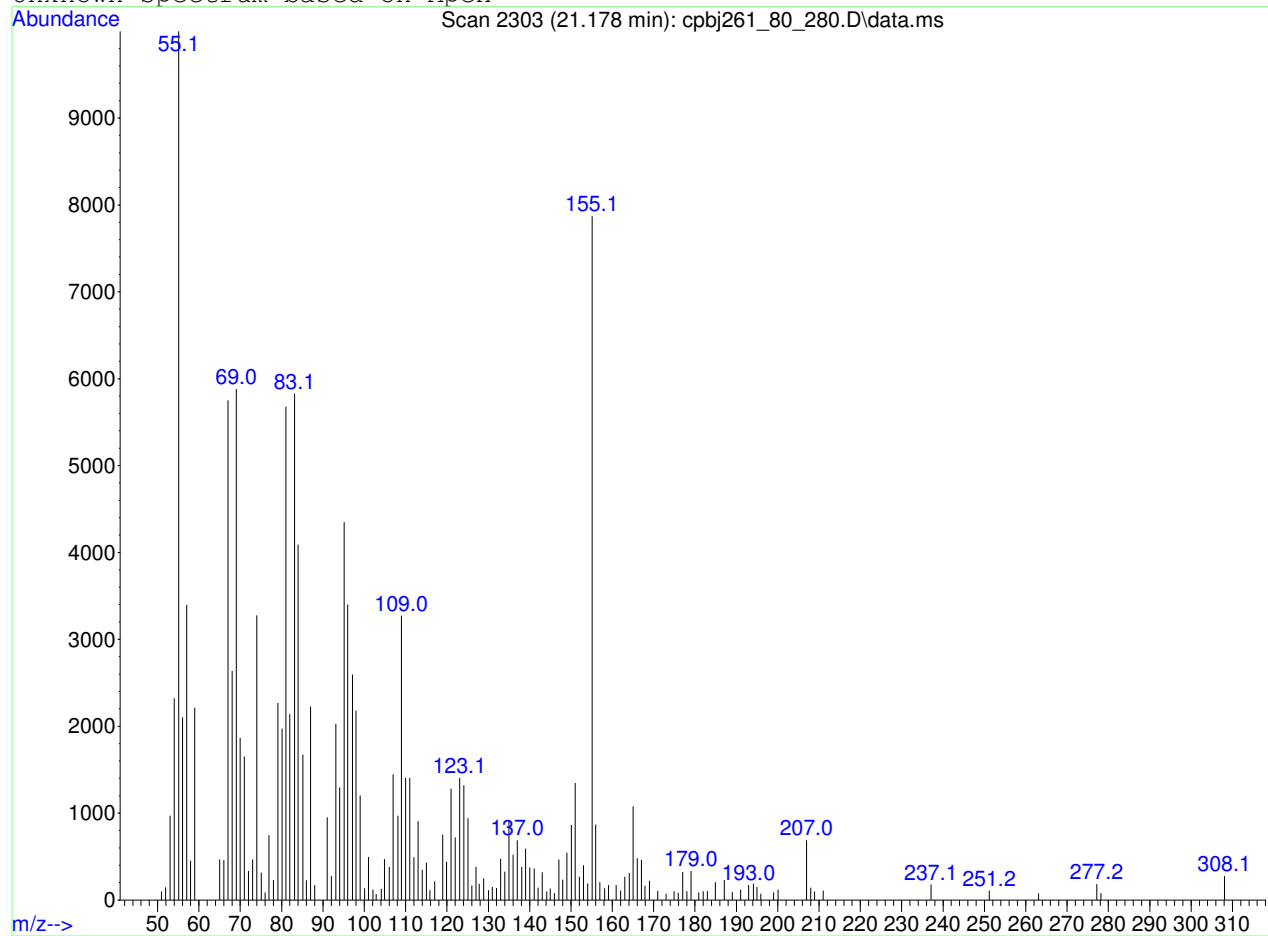
CAS\#

Qual

C:\DATABASE\DEMO.L

No hits were retrieved.

Unknown Spectrum based on Apex



Data File: D:\GCMS Daten\130524\cpbj261_80_280.D

Sample : cpbj261

Peak Number: 6 at 21.178 min Area: 8945028 Area % 1.46

The 3 best hits from each library.

Ref\# CAS\# Qual

C:\DATABASE\DEMO.L No hits were retrieved.