

Area Percent Report

Data Path : D:\GCMS Daten\130524\
 Data File : cpbj261.D
 Acq On : 24 May 2013 10:13
 Operator : JD
 Sample : cpbj261
 Misc :
 ALS Vial : 2 Sample Multiplier: 1

Integration Parameters: autoint1.e
 Integrator: ChemStation

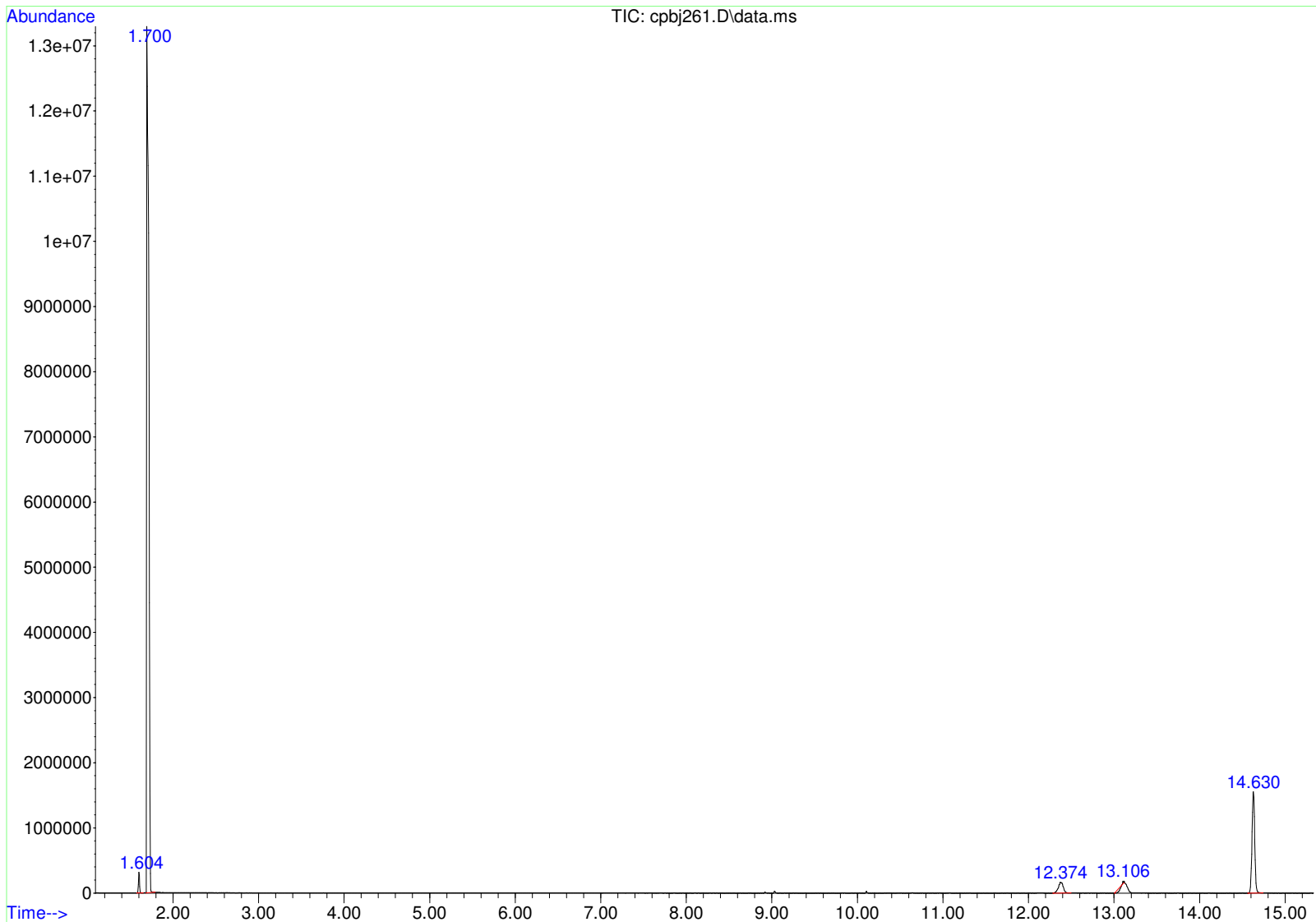
Method : D:\GCMS Daten\130522\ocafk360a.D\STANDARD.M
 Title :

Signal : TIC: cpbj261.D\data.ms

peak #	R.T. min	first scan	max scan	last scan	PK TY	peak height	corr. area	corr. % max.	% of total
1	1.604	94	100	107	BB	297999	2656507	1.17%	0.986%
2	1.700	115	118	134	BB	12534961	226485387	100.00%	84.082%
3	12.374	2158	2175	2197	BB 4	165955	6657936	2.94%	2.472%
4	13.106	2297	2316	2318	BV	35868	-1306569	-0.58%	-0.485%
5	14.630	2598	2610	2630	BB	1559835	34868196	15.40%	12.945%

Sum of corrected areas: 269361456

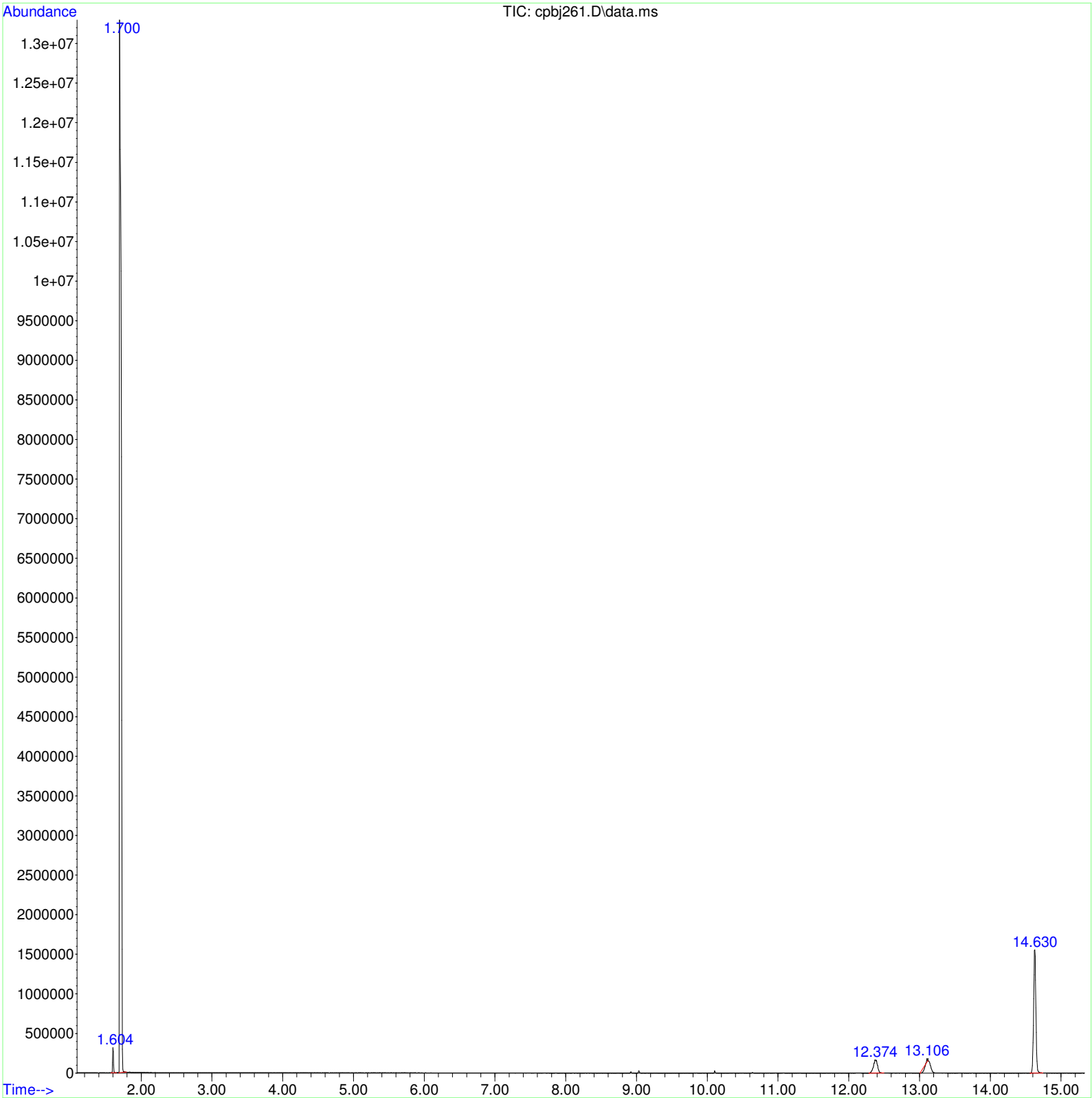
STANDARD.M Fri May 24 11:13:00 2013 GCMS



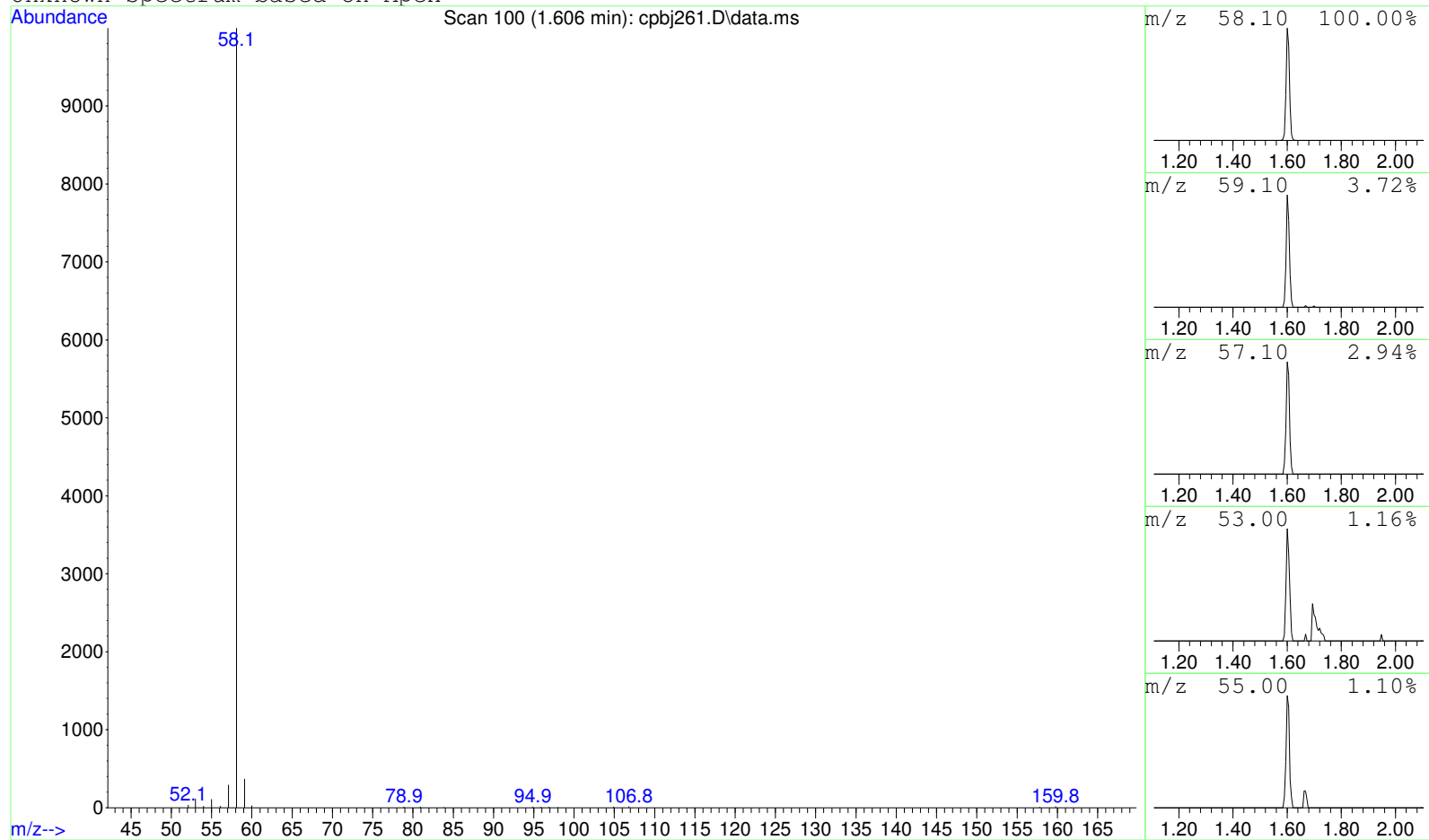
Data Path : D:\GCMS Daten\130524\
Data File : cpbj261.D
Acq On : 24 May 2013 10:13
Operator : JD
Sample : cpbj261
Misc :
ALS Vial : 2 Sample Multiplier: 1

Search Libraries: C:\DATABASE\DEMO.L Minimum Quality: 0

Unknown Spectrum: Apex
Integration Events: ChemStation Integrator - autoint1.e



Unknown Spectrum based on Apex



Data File: D:\GCMS Daten\130524\cpbj261.D

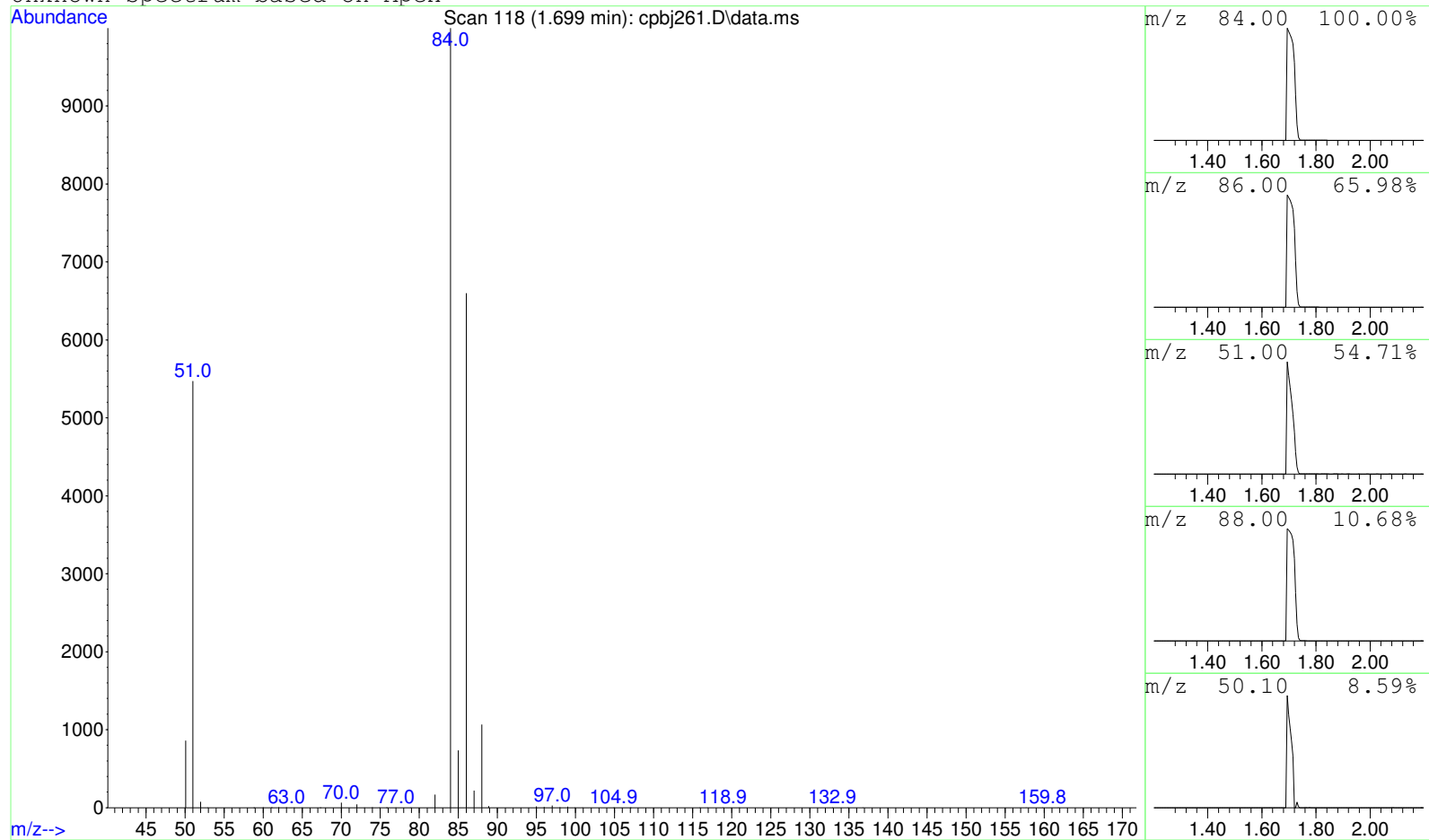
Sample : cpbj261

Peak Number: 1 at 1.606 min Area: 2656507 Area % 0.99

The 3 best hits from each library. Ref\# CAS\# Qual

C:\DATABASE\DEMO.L No hits were retrieved.

Unknown Spectrum based on Apex



Data File: D:\GCMS Daten\130524\cpbj261.D

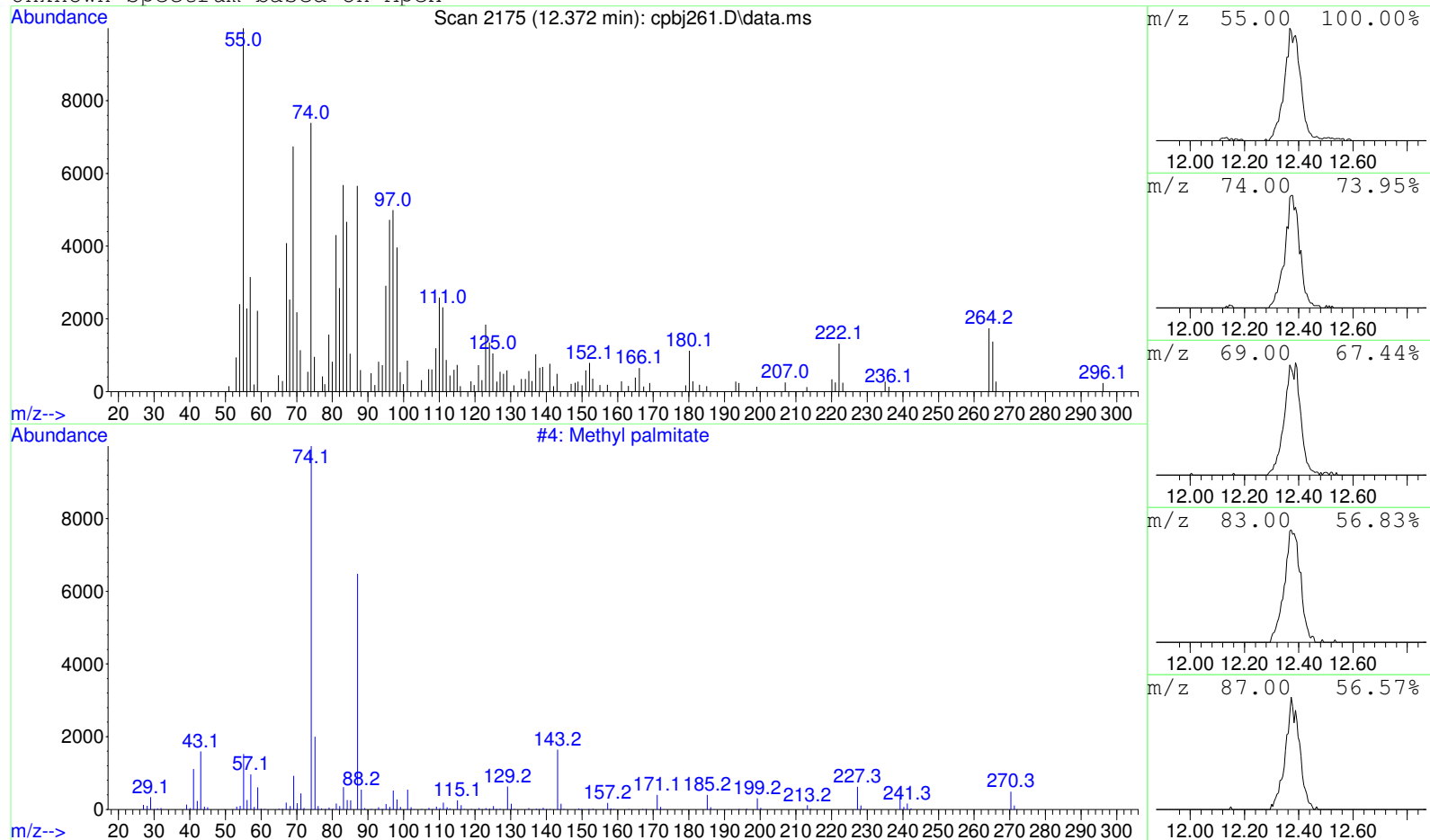
Sample : cpbj261

Peak Number: 2 at 1.699 min Area: 226485387 Area % 84.08

The 3 best hits from each library. Ref\# CAS\# Qual

C:\DATABASE\DEMO.L No hits were retrieved.

Unknown Spectrum based on Apex



Data File: D:\GCMS Daten\130524\cpbj261.D

Sample : cpbj261

Peak Number: 3 at 12.372 min Area: 6657936 Area % 2.47

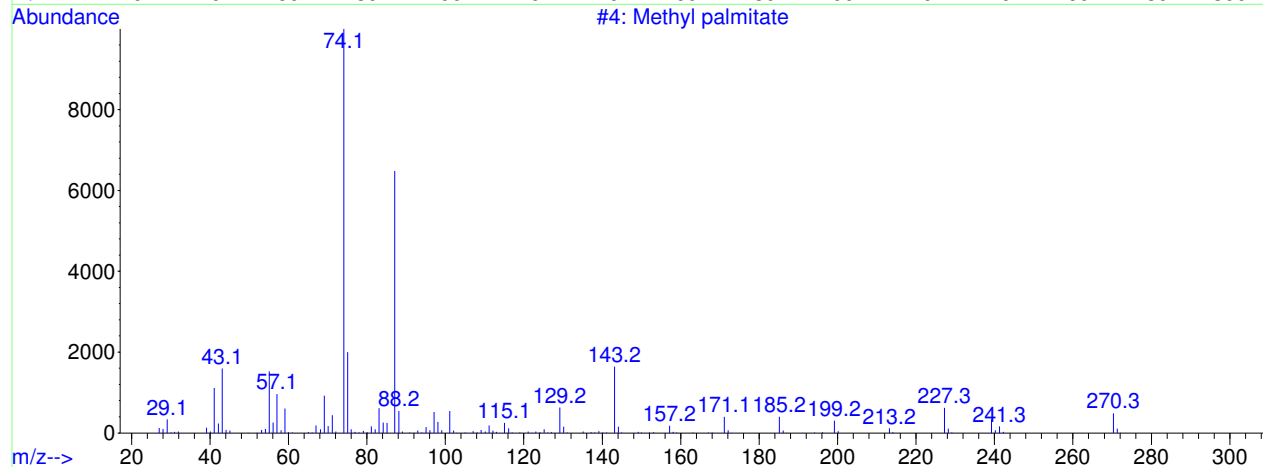
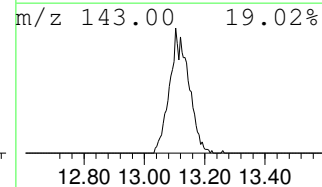
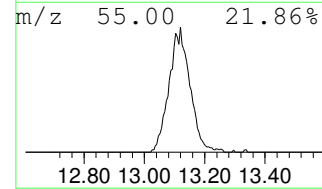
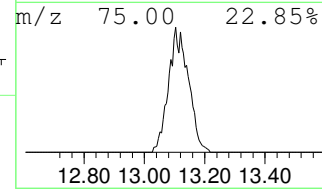
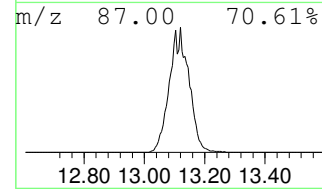
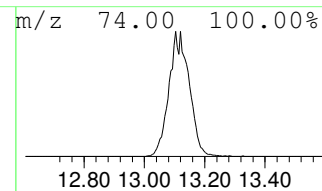
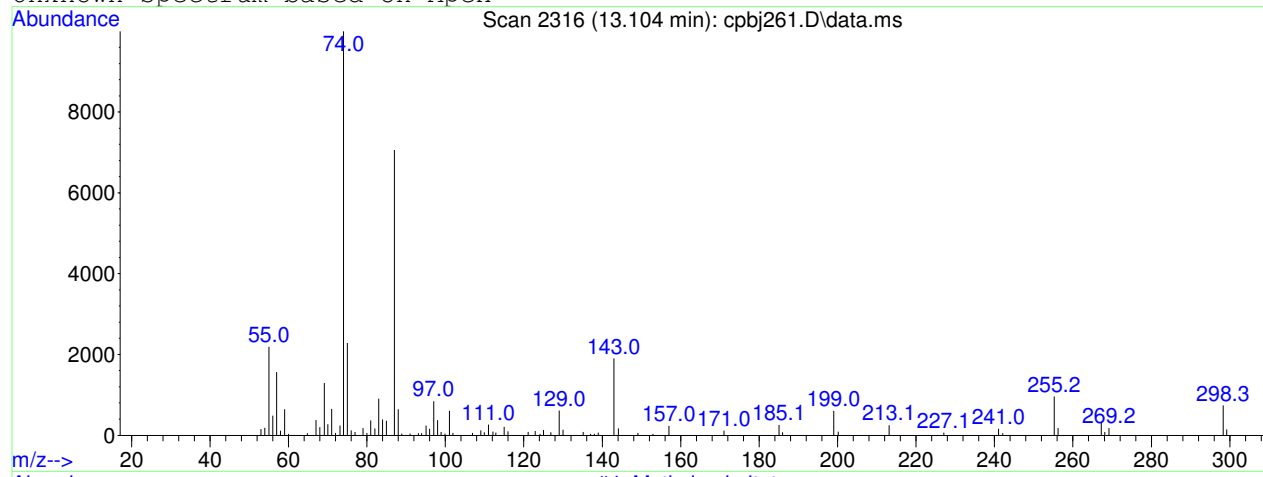
The 3 best hits from each library.

Ref\# CAS\# Qual

C:\DATABASE\DEMO.L
1 Methyl palmitate

4 000112-39-0 10

Unknown Spectrum based on Apex



Data File: D:\GCMS Daten\130524\cpbj261.D

Sample : cpbj261

Peak Number: 4 at 13.104 min Area: -1306569 Area % -0.49

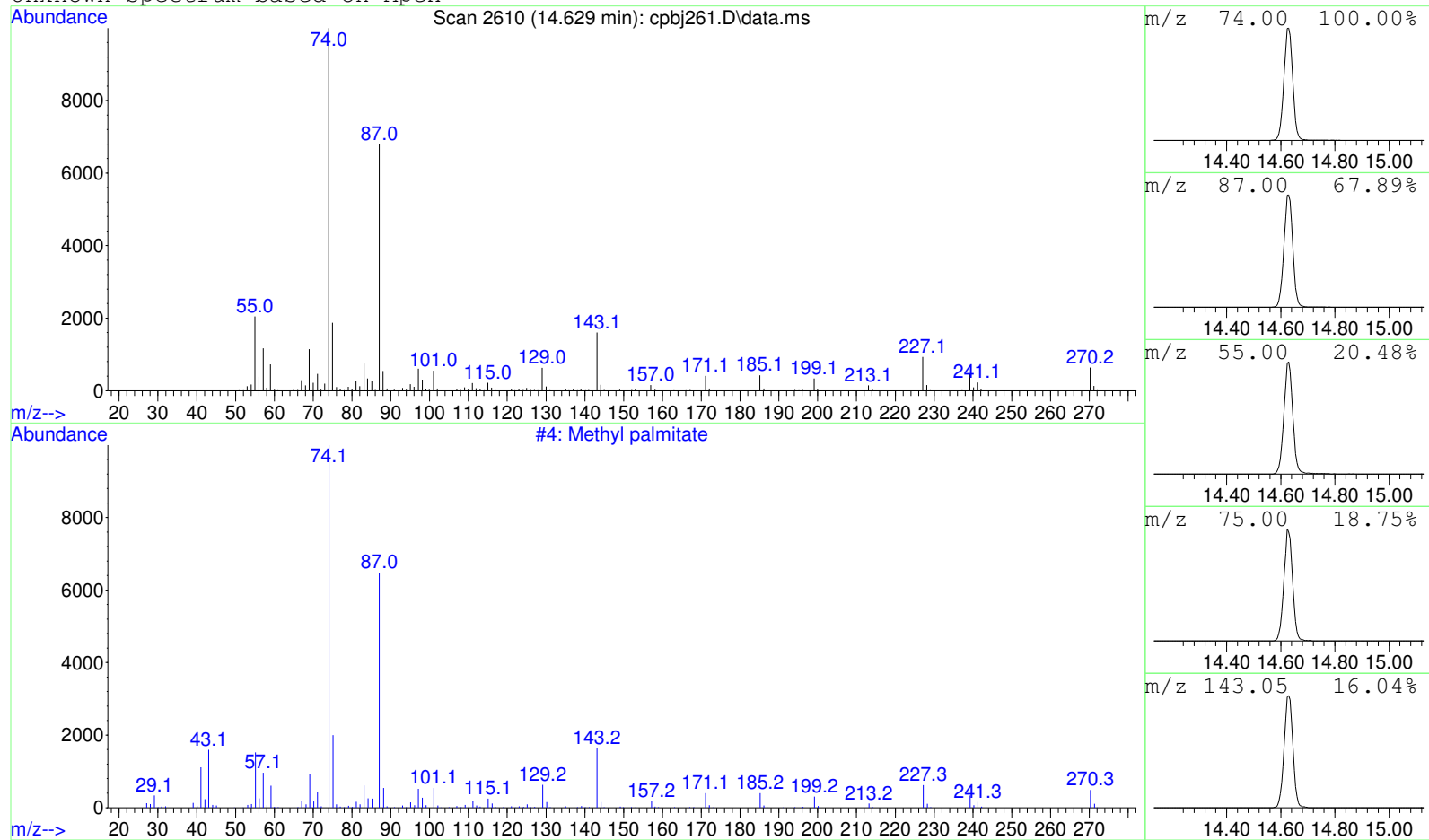
The 3 best hits from each library.

Ref\# CAS\# Qual

C:\DATABASE\DEMO.L
1 Methyl palmitate

4 000112-39-0 72

Unknown Spectrum based on Apex



Data File: D:\GCMS Daten\130524\cpbj261.D

Sample : cpbj261

Peak Number: 5 at 14.629 min Area: 34868196 Area % 12.94

The 3 best hits from each library.

Ref\# CAS\# Qual

C:\DATABASE\DEMO.L
1 Methyl palmitate

4 000112-39-0 99