

Area Percent Report

Data Path : D:\GCMS Daten\130517\
Data File : CPBJ248G2.D
Acq On : 17 May 2013 11:02
Operator : jd
Sample : cpbj248g2
Misc :
ALS Vial : 10 Sample Multiplier: 1

Integration Parameters: autoint1.e
Integrator: ChemStation

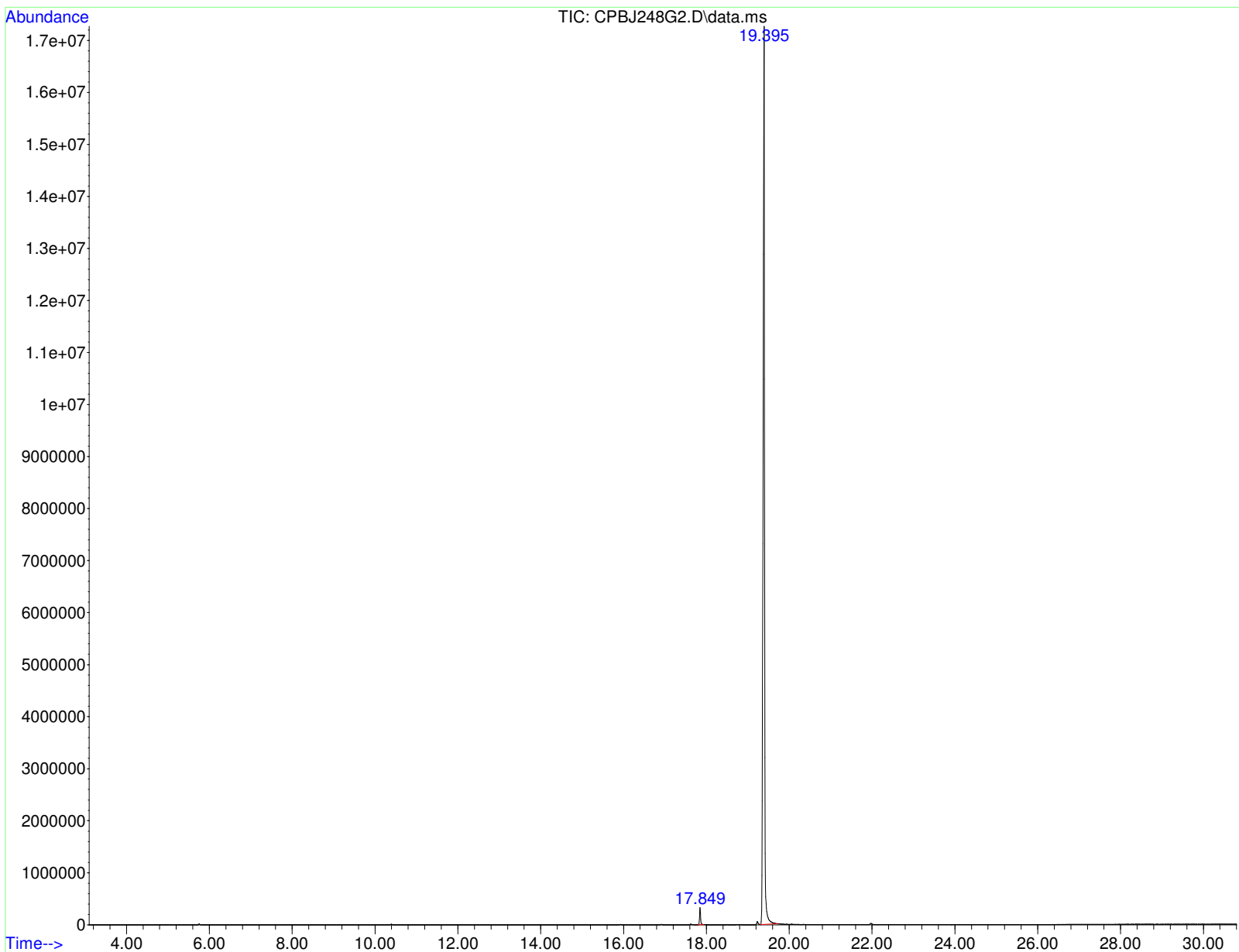
Method : D:\GCMS Daten\130517\CPBJ248G2.D\80_280.M
Title :

Signal : TIC: CPBJ248G2.D\data.ms

peak #	R.T. min	first scan	max scan	last scan	PK TY	peak height	corr. area	corr. % max.	% of total
1	17.849	1873	1879	1888	BB	314934	5428534	1.27%	1.250%
2	19.395	2065	2076	2116	BB	17286674	429008776	100.00%	98.750%

Sum of corrected areas: 434437310

80_280.M Fri May 17 11:35:15 2013 GCMS



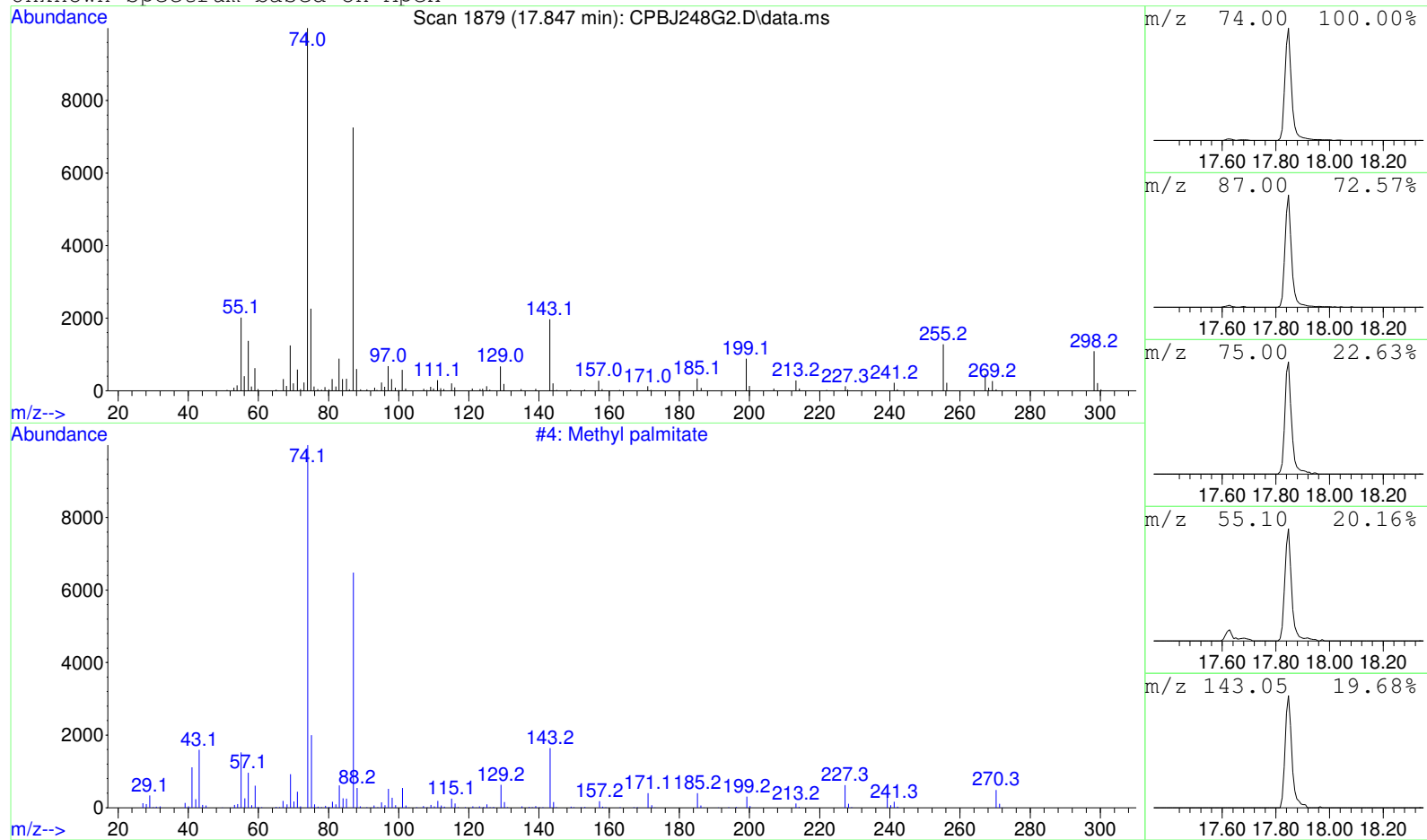
Data Path : D:\GCMS Daten\130517\
Data File : CPBJ248G2.D
Acq On : 17 May 2013 11:02
Operator : jd
Sample : cpbj248g2
Misc :
ALS Vial : 10 Sample Multiplier: 1

Search Libraries: C:\DATABASE\DEMO.L Minimum Quality: 0

Unknown Spectrum: Apex
Integration Events: ChemStation Integrator - autoint1.e



Unknown Spectrum based on Apex



Data File: D:\GCMS Daten\130517\CPBJ248G2.D

Sample : cpbj248g2

Peak Number: 1 at 17.847 min Area: 5428534 Area % 1.25

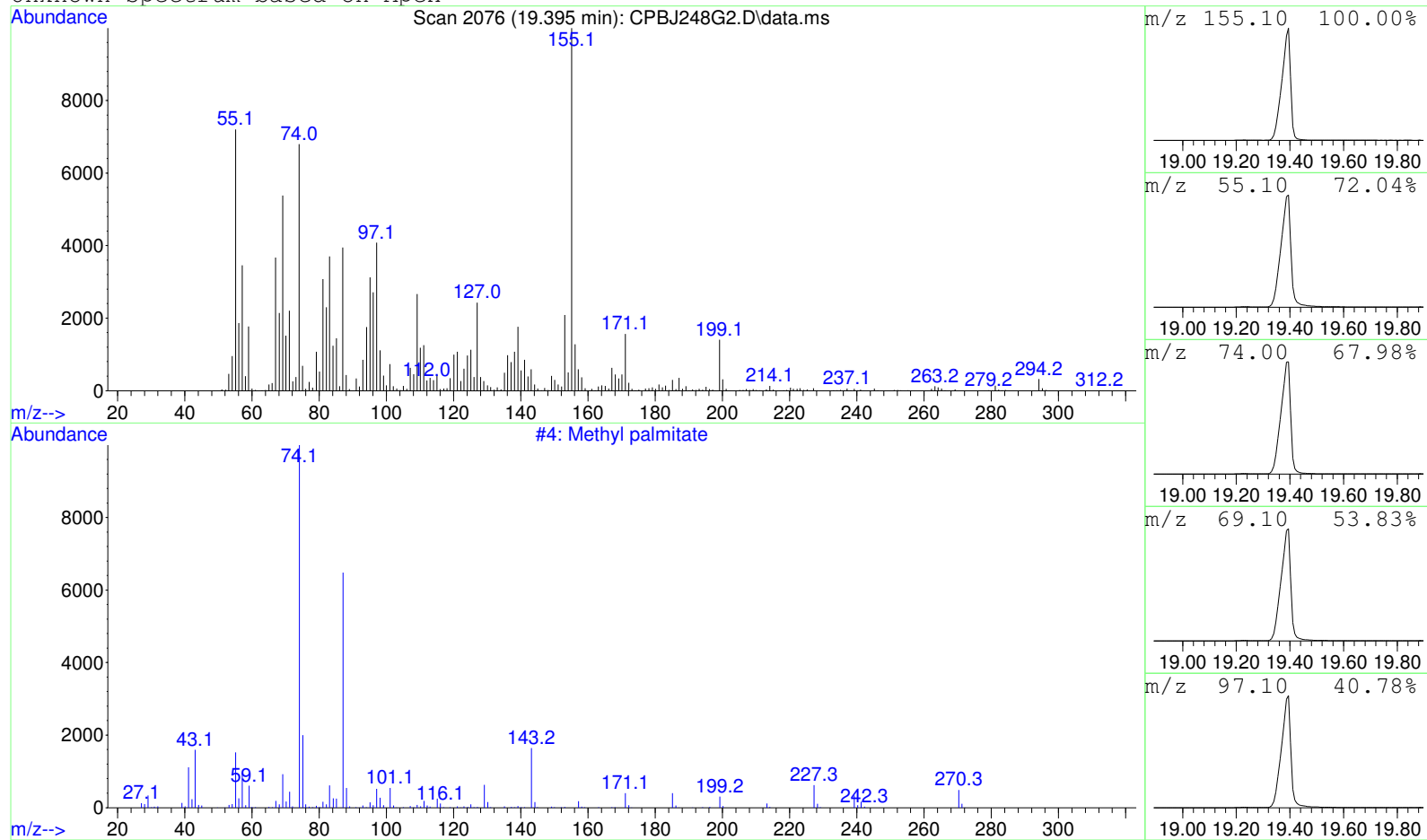
The 3 best hits from each library.

Ref\# CAS\# Qual

C:\DATABASE\DEMO.L
1 Methyl palmitate

4 000112-39-0 80

Unknown Spectrum based on Apex



Data File: D:\GCMS Daten\130517\CPBJ248G2.D

Sample : cpbj248g2

Peak Number: 2 at 19.395 min Area: 429008776 Area % 98.75

The 3 best hits from each library.

Ref\# CAS\# Qual

C:\DATABASE\DEMO.L
1 Methyl palmitate

4 000112-39-0 9