

Area Percent Report

Data Path : D:\GCMS Daten\130326\  
 Data File : cpbj248f1rp.D  
 Acq On : 26 Mar 2013 15:50  
 Operator : JD  
 Sample : cpbj248f1rp  
 Misc :  
 ALS Vial : 12 Sample Multiplier: 1

Integration Parameters: autoint1.e  
 Integrator: ChemStation

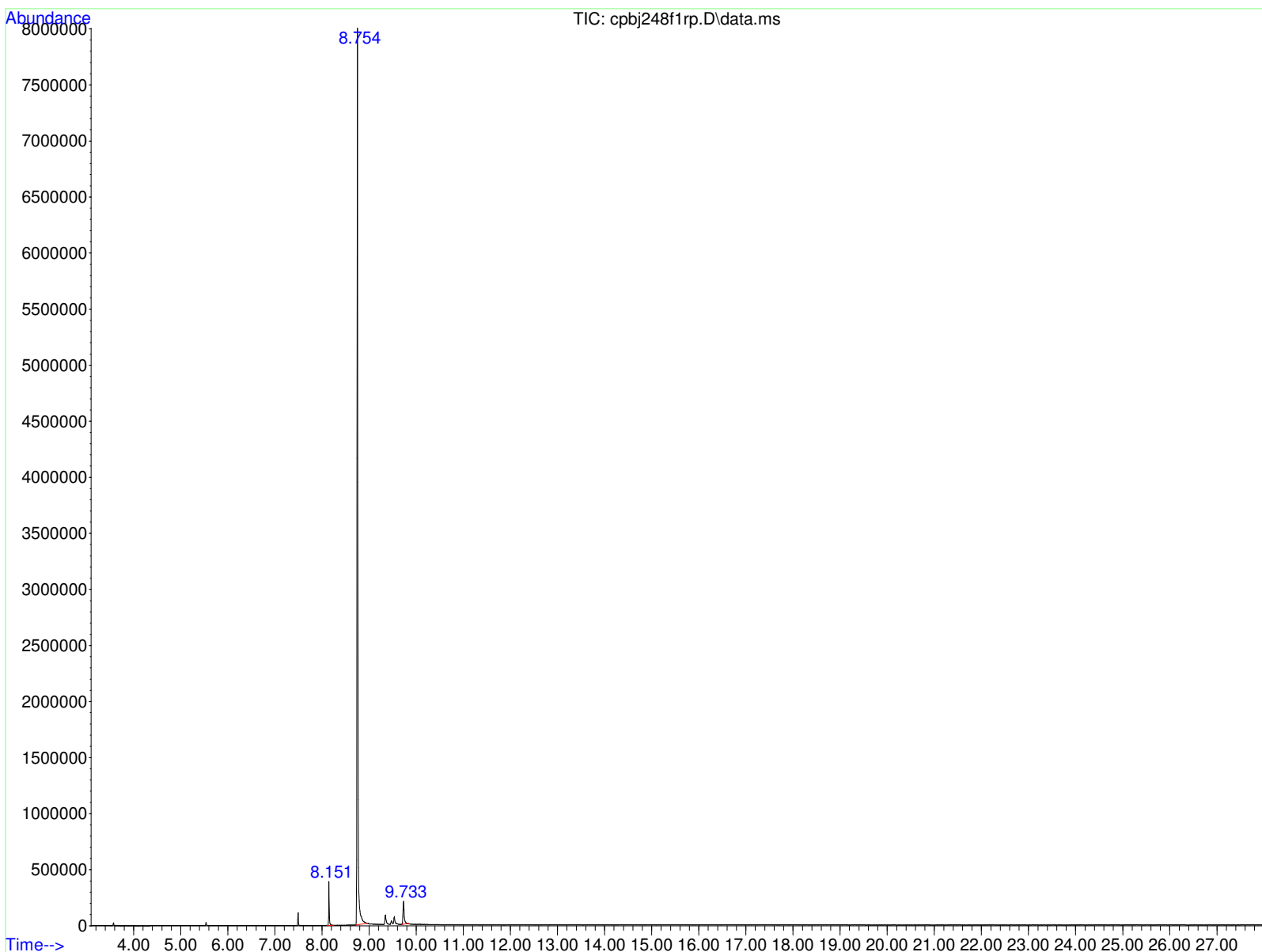
Method : D:\GCMS Daten\130225\ocafk291a.D\STANDARD.M  
 Title :

Signal : TIC: cpbj248f1rp.D\data.ms

peak #	R.T. min	first scan	max scan	last scan	PK TY	peak height	corr. area	corr. % max.	% of total
1	8.151	640	645	655	BB	343779	3581133	3.86%	3.581%
2	8.754	716	721	746	BB	7379414	92797024	100.00%	92.781%
3	9.733	842	846	859	BB	198855	3638807	3.92%	3.638%

Sum of corrected areas: 100016964

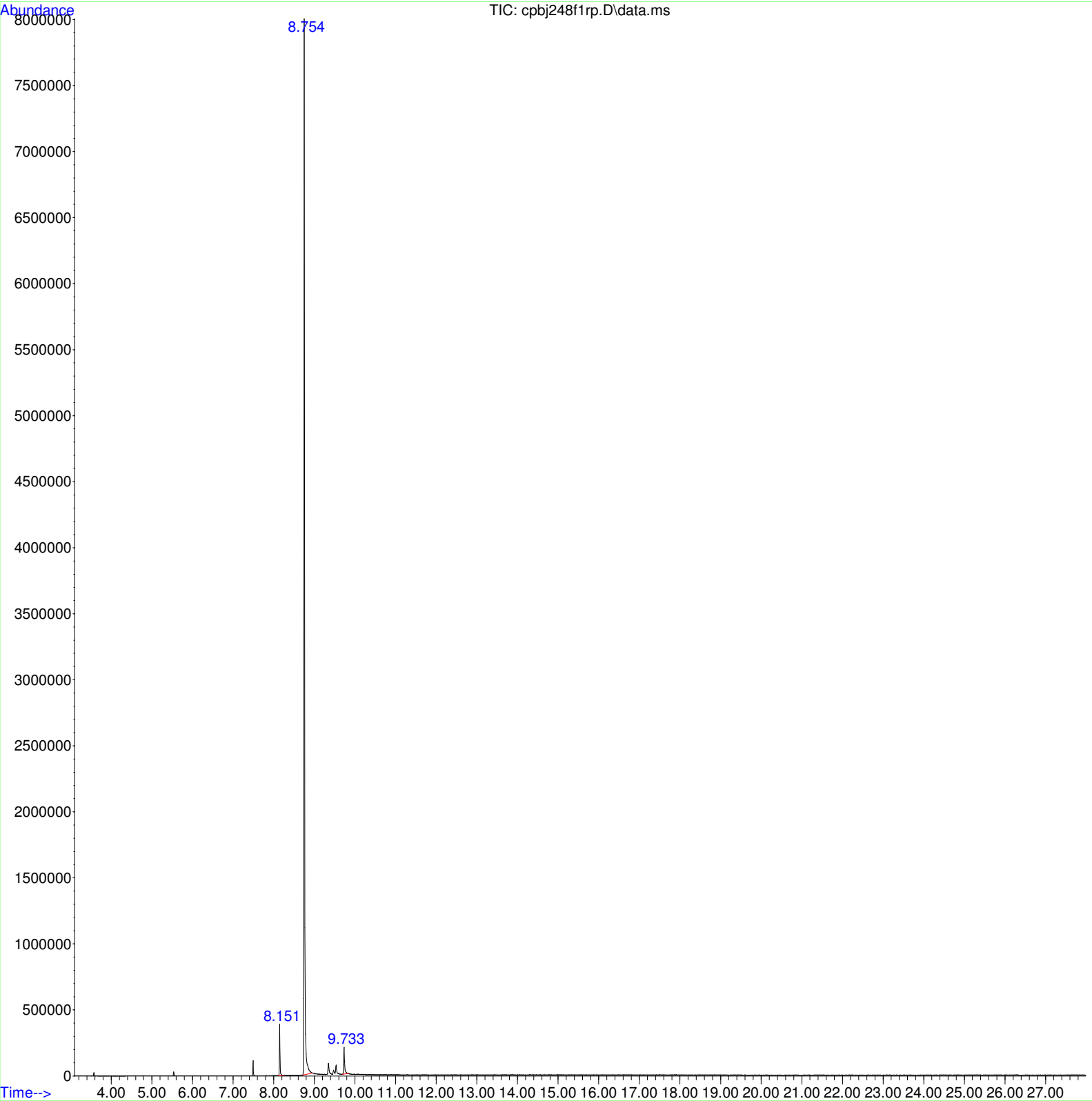
STANDARD.M Wed Mar 27 07:14:12 2013 GCMS



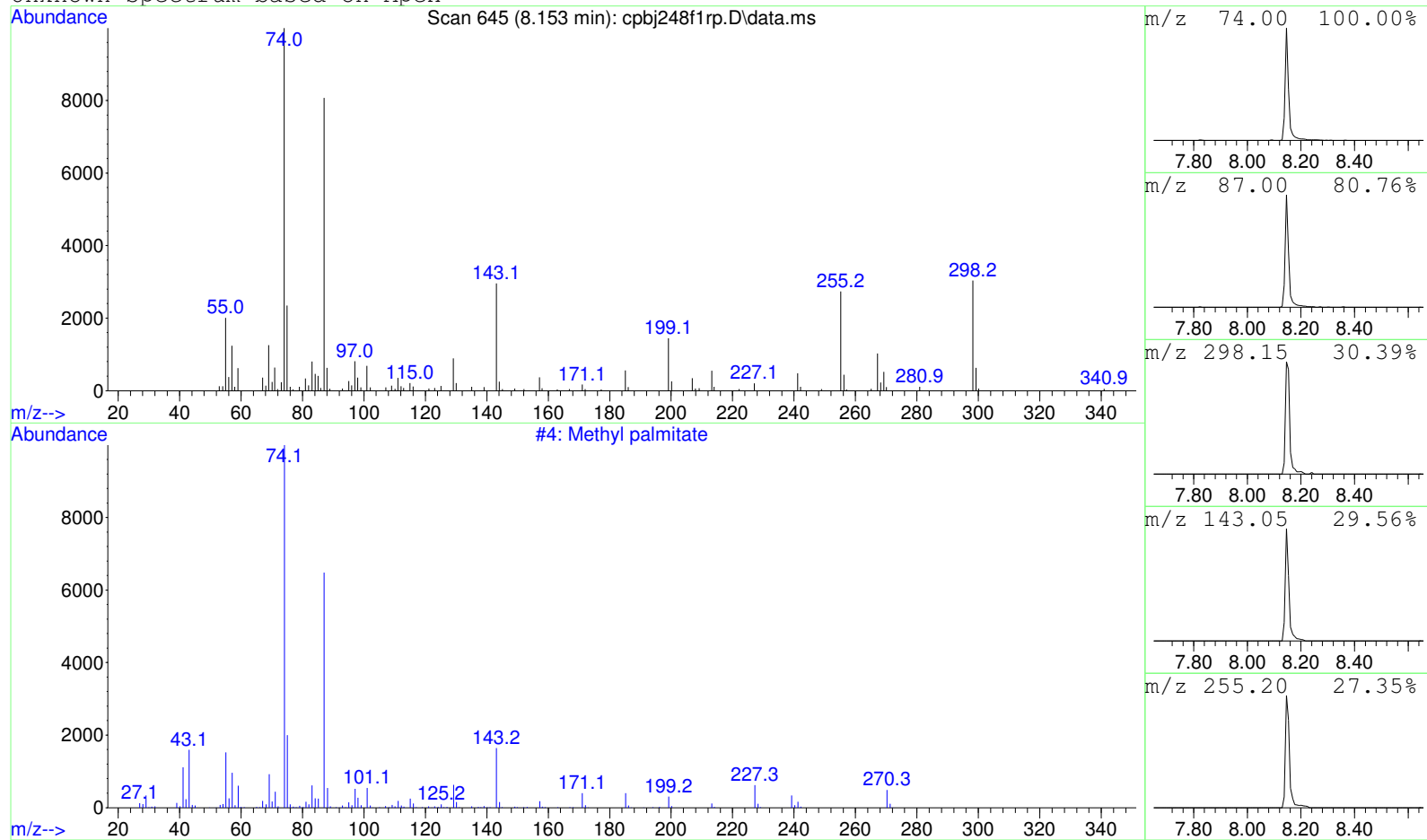
Data Path : D:\GCMS Daten\130326\  
Data File : cpbj248f1rp.D  
Acq On : 26 Mar 2013 15:50  
Operator : JD  
Sample : cpbj248f1rp  
Misc :  
ALS Vial : 12 Sample Multiplier: 1

Search Libraries: C:\DATABASE\DEMO.L Minimum Quality: 0

Unknown Spectrum: Apex  
Integration Events: ChemStation Integrator - autoint1.e



Unknown Spectrum based on Apex



Data File: D:\GCMS Daten\130326\cpbj248f1rp.D

Sample : cpbj248f1rp

Peak Number: 1 at 8.153 min Area: 3581133 Area % 3.58

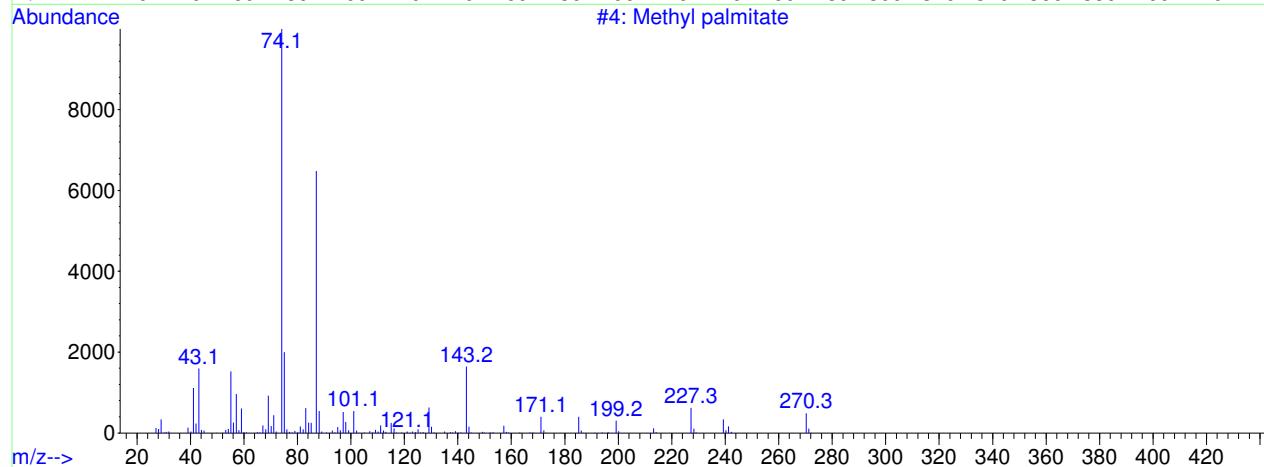
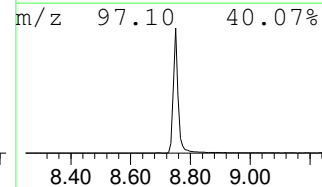
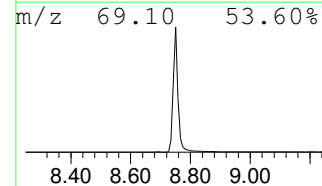
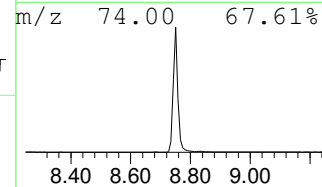
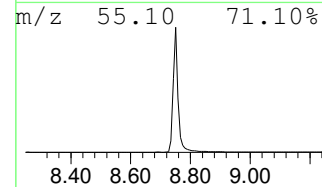
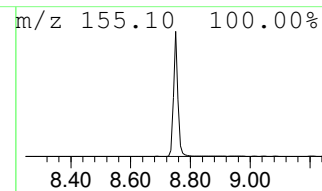
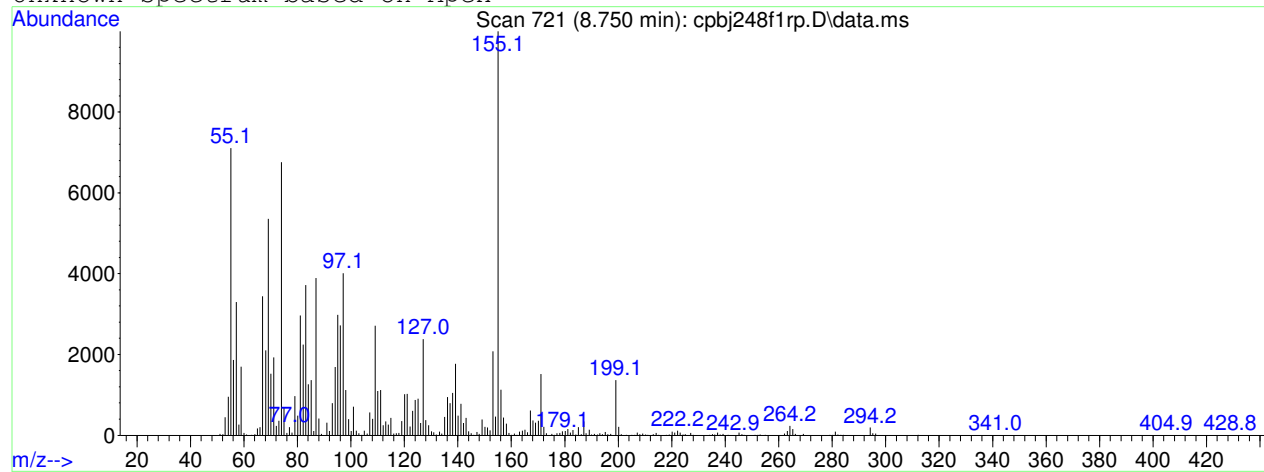
The 3 best hits from each library.

Ref\# CAS\# Qual

C:\DATABASE\DEMO.L  
1 Methyl palmitate

4 000112-39-0 53

Unknown Spectrum based on Apex



Data File: D:\GCMS Daten\130326\cpbj248f1rp.D

Sample : cpbj248f1rp

Peak Number: 2 at 8.750 min Area: 92797024 Area % 92.78

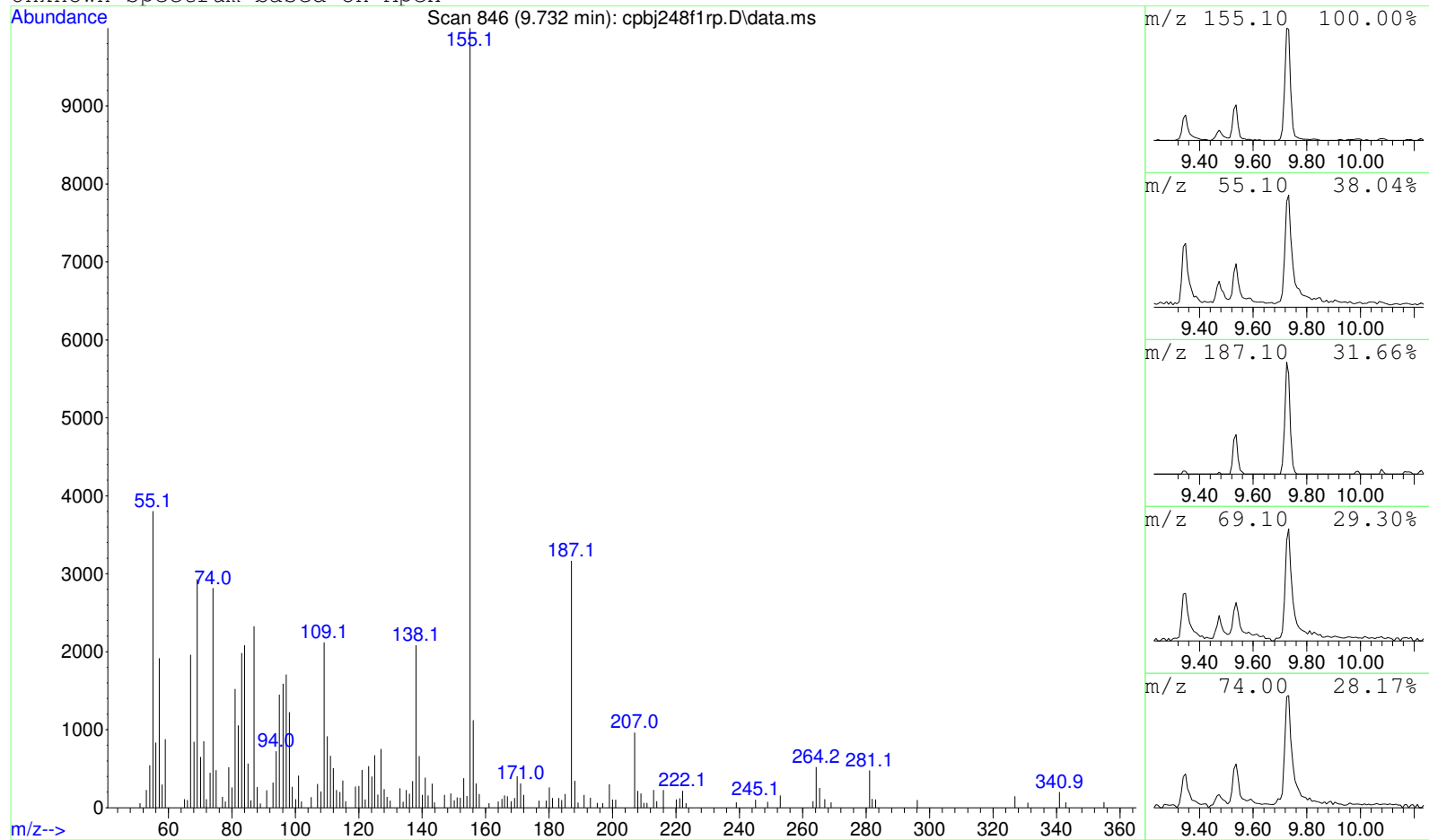
The 3 best hits from each library.

Ref\# CAS\# Qual

C:\DATABASE\DEMO.L  
1 Methyl palmitate

4 000112-39-0 4

Unknown Spectrum based on Apex



Data File: D:\GCMS Daten\130326\cpbj248f1rp.D

Sample : cpbj248f1rp

Peak Number: 3 at 9.732 min Area: 3638807 Area % 3.64

The 3 best hits from each library. Ref\# CAS\# Qual

-----  
C:\DATABASE\DEMO.L No hits were retrieved.