

Area Percent Report

Data Path : D:\GCMS Daten\130326\
Data File : cpbj248e1a3.D
Acq On : 26 Mar 2013 16:23
Operator : JD
Sample : cpbj248e1a3
Misc :
ALS Vial : 13 Sample Multiplier: 1

Integration Parameters: autoint1.e
Integrator: ChemStation

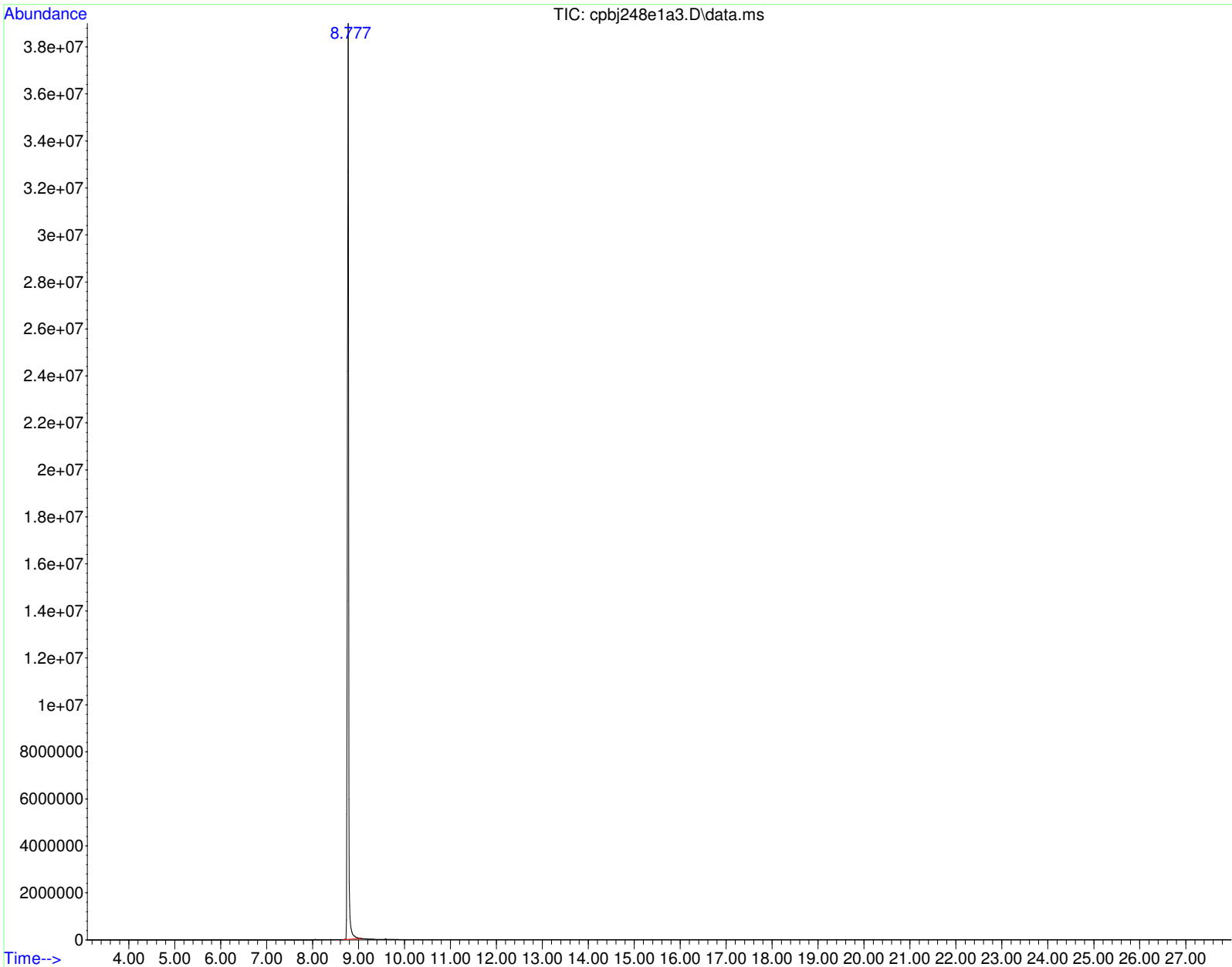
Method : D:\GCMS Daten\130225\ocafk291a.D\STANDARD.M
Title :

Signal : TIC: cpbj248e1a3.D\data.ms

peak #	R.T. min	first scan	max scan	last scan	PK TY	peak height	corr. area	corr. % max.	% of total
1	8.777	711	724	758	BB	37802192	766303794	100.00%	100.000%

Sum of corrected areas: 766303794

STANDARD.M Wed Mar 27 07:13:21 2013 GCMS



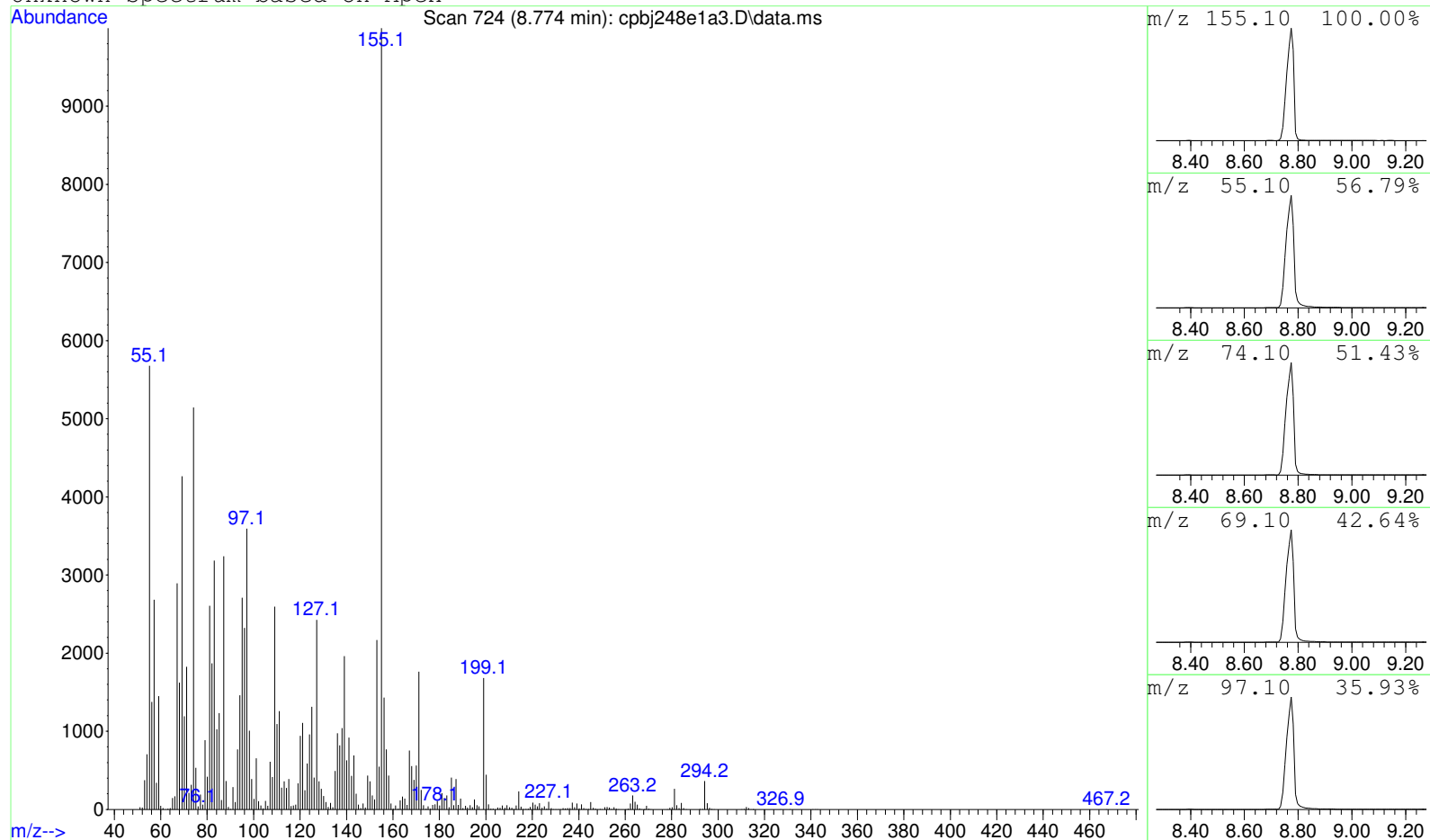
Data Path : D:\GCMS Daten\130326\
Data File : cpbj248e1a3.D
Acq On : 26 Mar 2013 16:23
Operator : JD
Sample : cpbj248e1a3
Misc :
ALS Vial : 13 Sample Multiplier: 1

Search Libraries: C:\DATABASE\DEMO.L Minimum Quality: 0

Unknown Spectrum: Apex
Integration Events: ChemStation Integrator - autoint1.e



Unknown Spectrum based on Apex



Data File: D:\GCMS Daten\130326\cpbj248e1a3.D

Sample : cpbj248e1a3

Peak Number: 1 at 8.774 min Area: 766318533 Area % 100.00

The 3 best hits from each library.

Ref\# CAS\# Qual

C:\DATABASE\DEMO.L No hits were retrieved.