

Area Percent Report

Data Path : D:\GCMS Daten\130320\
 Data File : cpbj248d1a2.D
 Acq On : 20 Mar 2013 14:39
 Operator : JD
 Sample : cpbj248d1a2
 Misc :
 ALS Vial : 15 Sample Multiplier: 1

Integration Parameters: autoint1.e
 Integrator: ChemStation

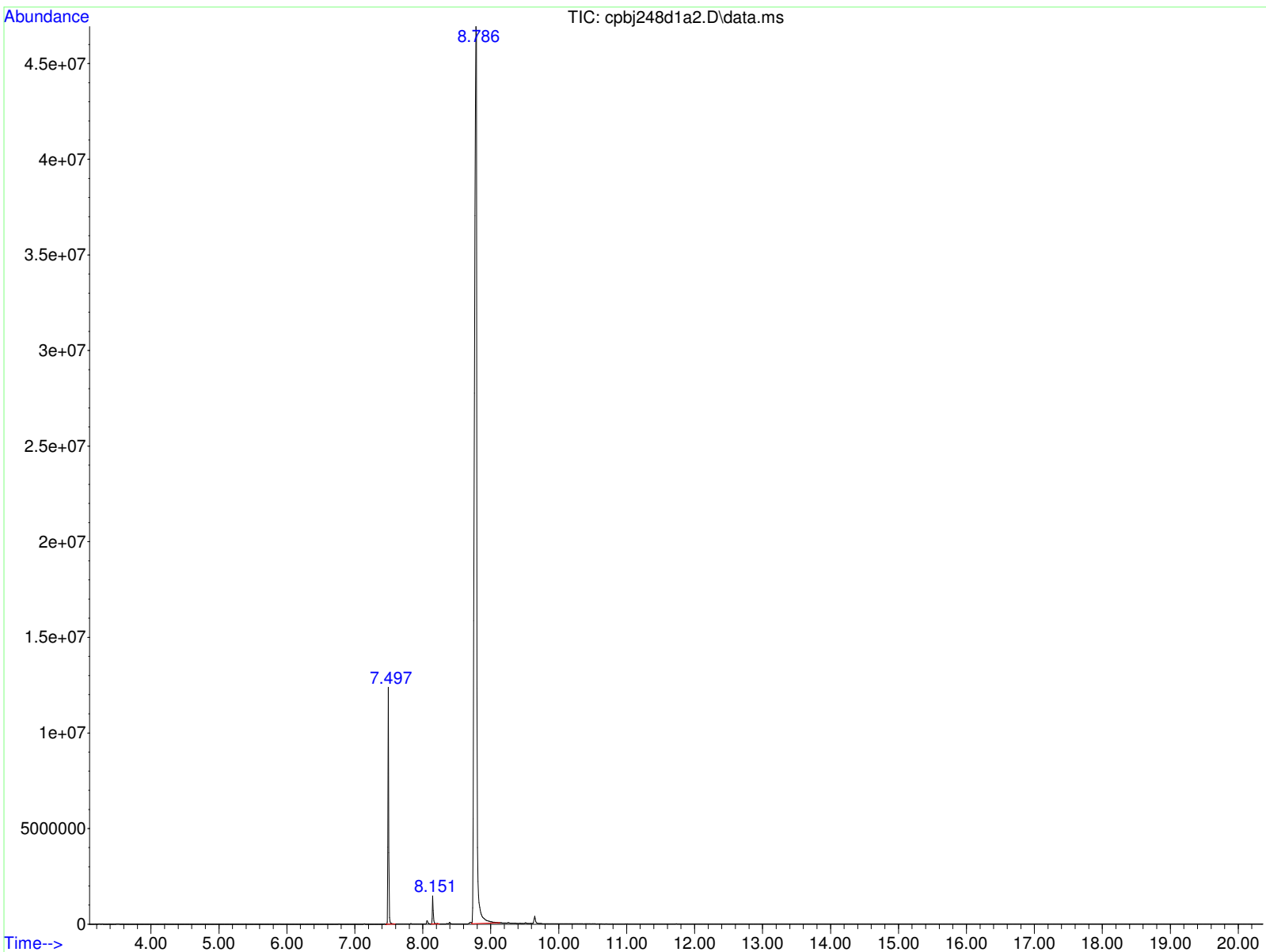
Method : D:\GCMS Daten\130225\ocafk291a.D\STANDARD.M
 Title :

Signal : TIC: cpbj248d1a2.D\data.ms

peak #	R.T. min	first scan	max scan	last scan	PK TY	peak height	corr. area	corr. % max.	% of total
1	7.497	556	561	572	BB	10986491	98279227	8.32%	7.606%
2	8.151	641	645	656	BB	1271877	13216682	1.12%	1.023%
3	8.786	717	725	768	VB	46993792	1180592838	100.00%	91.371%

Sum of corrected areas: 1292088748

STANDARD.M Wed Mar 20 15:01:02 2013 GCMS



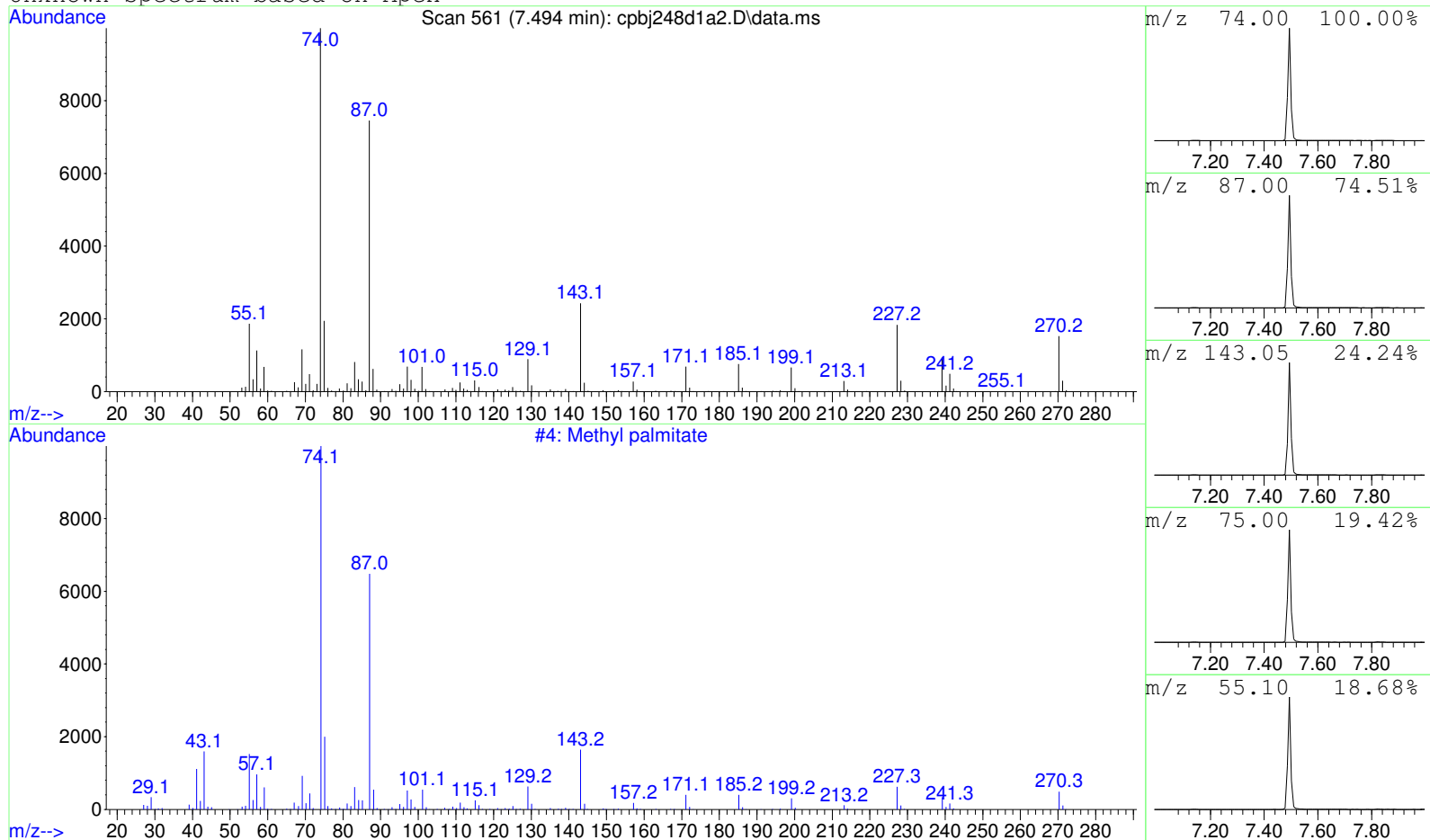
Data Path : D:\GCMS Daten\130320\
Data File : cpbj248d1a2.D
Acq On : 20 Mar 2013 14:39
Operator : JD
Sample : cpbj248d1a2
Misc :
ALS Vial : 15 Sample Multiplier: 1

Search Libraries: C:\DATABASE\DEMO.L Minimum Quality: 0

Unknown Spectrum: Apex
Integration Events: ChemStation Integrator - autoint1.e



Unknown Spectrum based on Apex



Data File: D:\GCMS Daten\130320\cpbj248d1a2.D

Sample : cpbj248d1a2

Peak Number: 1 at 7.494 min Area: 98279227 Area % 7.61

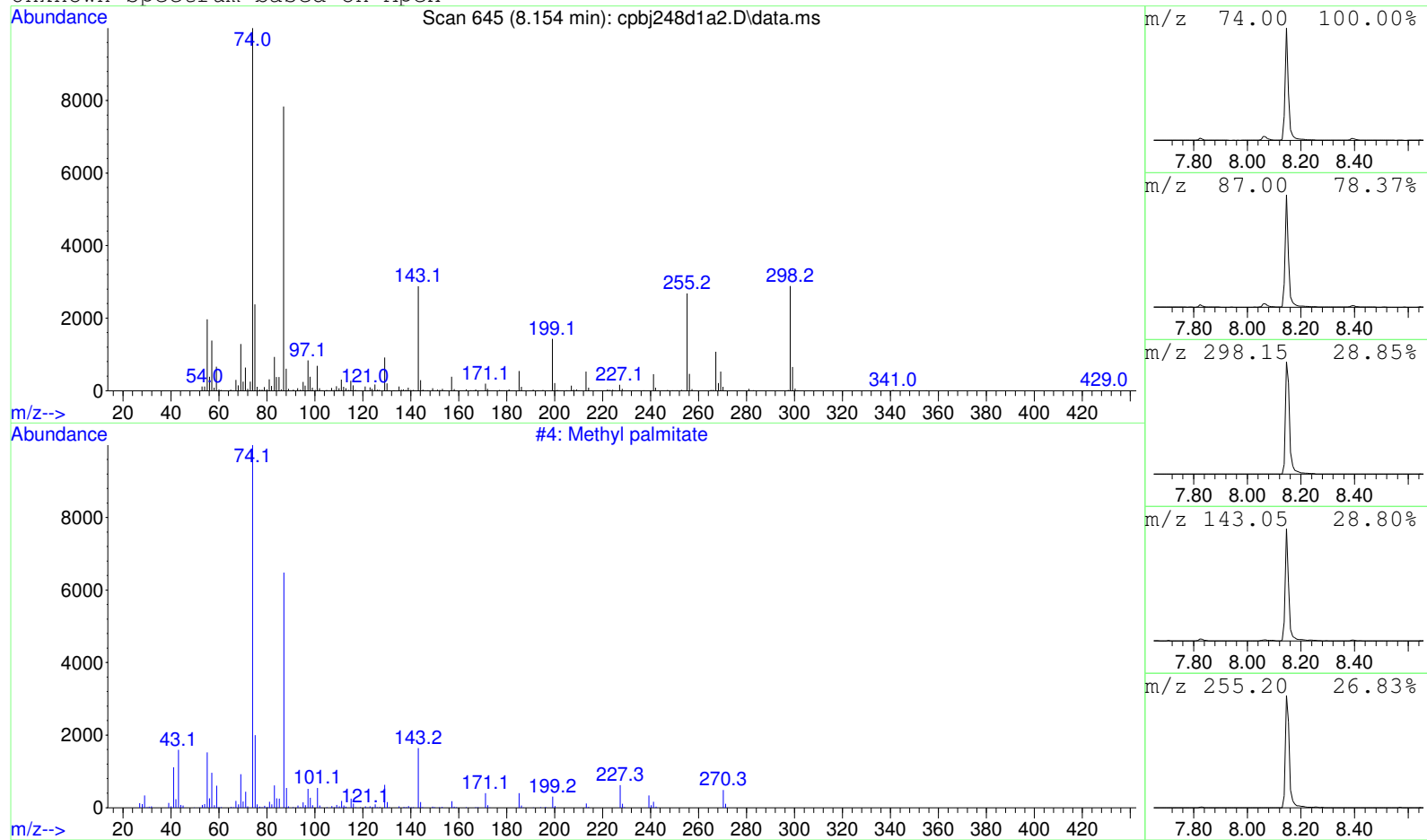
The 3 best hits from each library.

Ref\# CAS\# Qual

C:\DATABASE\DEMO.L
1 Methyl palmitate

4 000112-39-0 98

Unknown Spectrum based on Apex



Data File: D:\GCMS Daten\130320\cpbj248d1a2.D

Sample : cpbj248d1a2

Peak Number: 2 at 8.154 min Area: 13216682 Area % 1.02

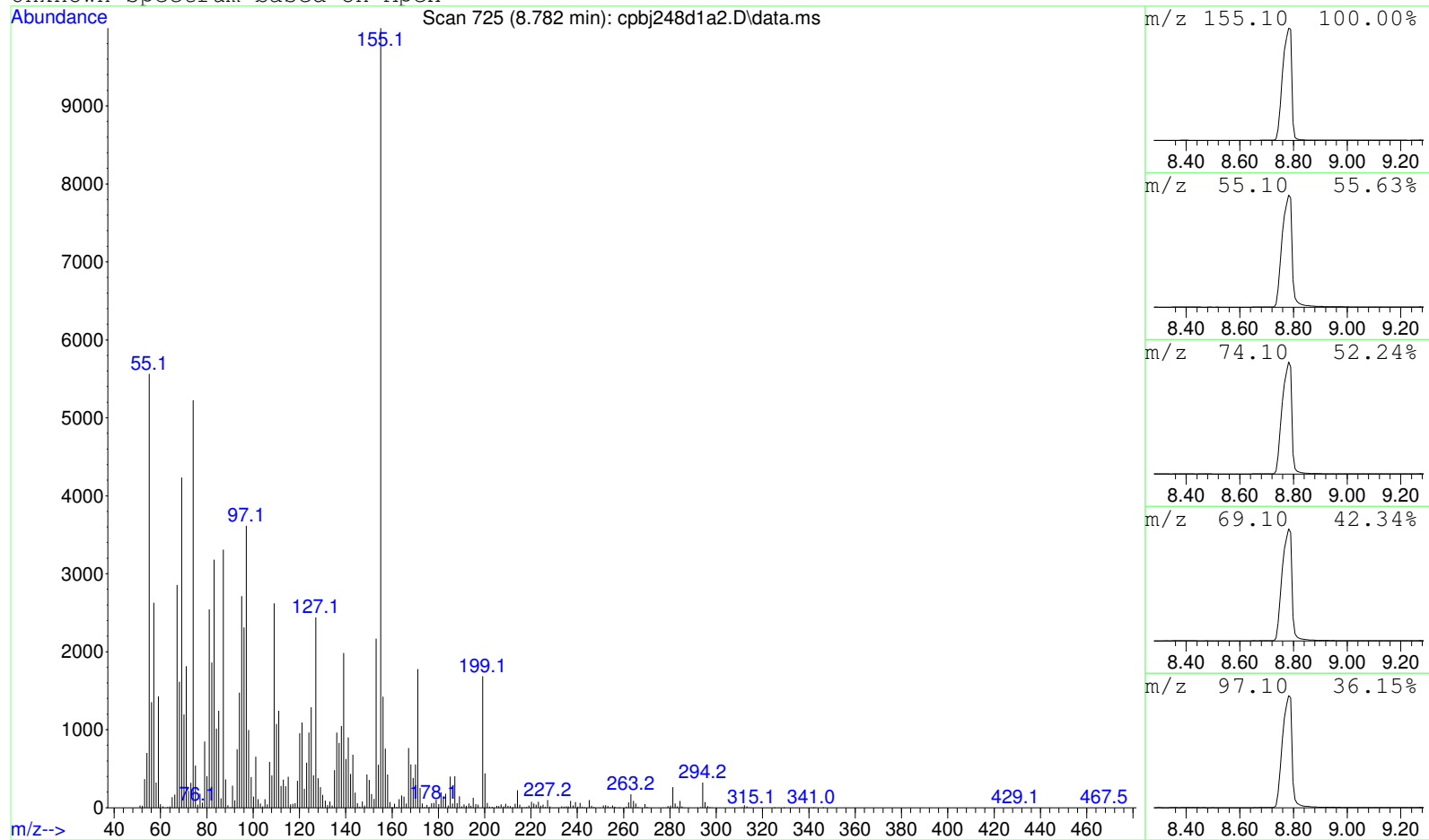
The 3 best hits from each library.

Ref\# CAS\# Qual

C:\DATABASE\DEMO.L
1 Methyl palmitate

4 000112-39-0 53

Unknown Spectrum based on Apex



Data File: D:\GCMS Daten\130320\cpbj248d1a2.D

Sample : cpbj248d1a2

Peak Number: 3 at 8.782 min Area: 1180592838 Area % 91.37

The 3 best hits from each library.

Ref\# CAS\# Qual

C:\DATABASE\DEMO.L No hits were retrieved.