

Area Percent Report

Data Path : D:\GCMS Daten\130320\
 Data File : cpbj248d1a1.D
 Acq On : 20 Mar 2013 14:07
 Operator : JD
 Sample : cpbj248d1a1
 Misc :
 ALS Vial : 14 Sample Multiplier: 1

Integration Parameters: autoint1.e
 Integrator: ChemStation

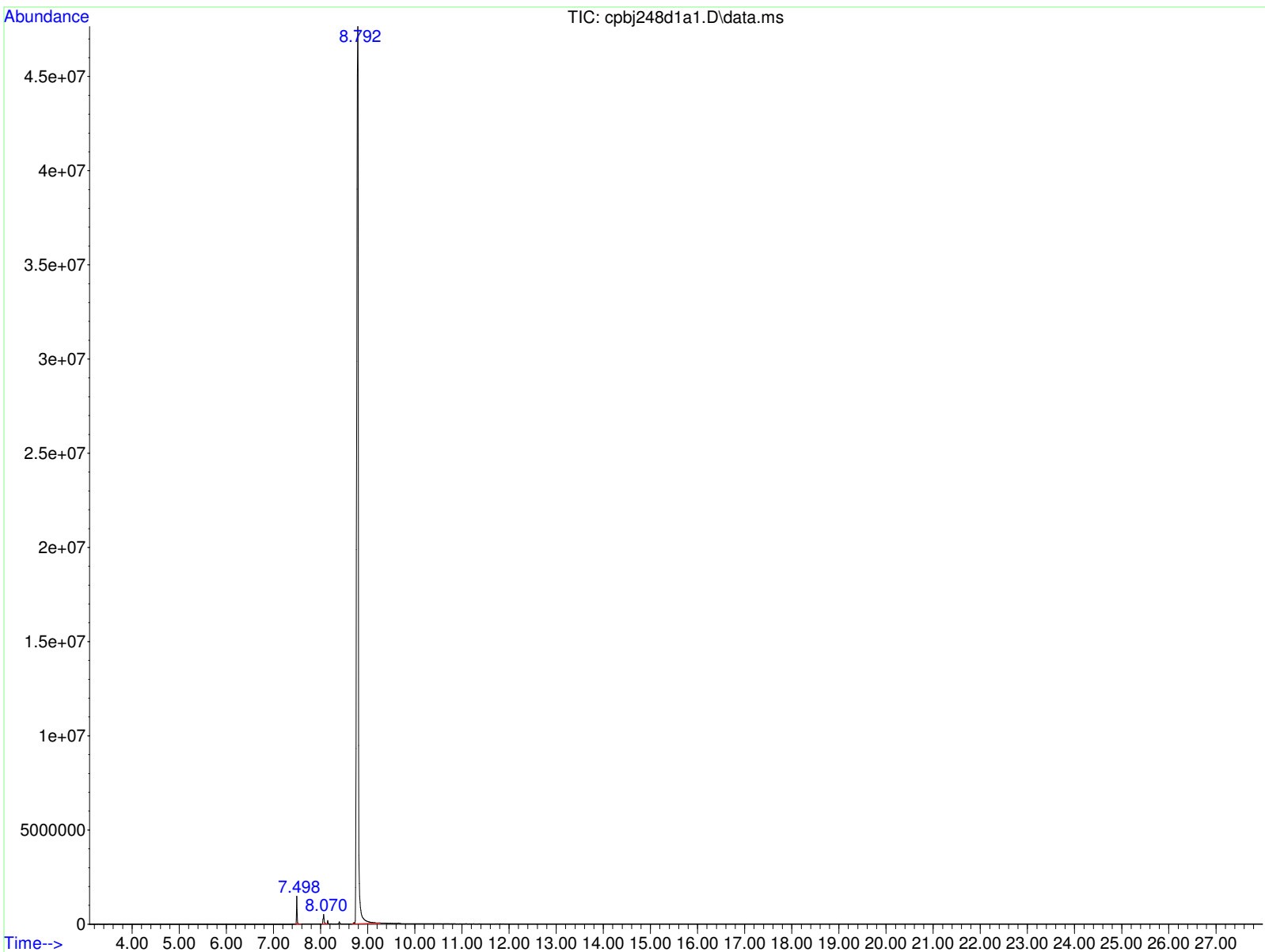
Method : D:\GCMS Daten\130225\ocafk291a.D\STANDARD.M
 Title :

Signal : TIC: cpbj248d1a1.D\data.ms

peak #	R.T. min	first scan	max scan	last scan	PK TY	peak height	corr. area	corr. % max.	% of total
1	7.498	557	562	571	BB	1324260	12458476	1.00%	0.987%
2	8.070	629	634	642	BV	460813	7289000	0.59%	0.578%
3	8.792	711	726	784	BB	47353713	1242287625	100.00%	98.435%

Sum of corrected areas: 1262035101

STANDARD.M Wed Mar 20 14:44:13 2013 GCMS



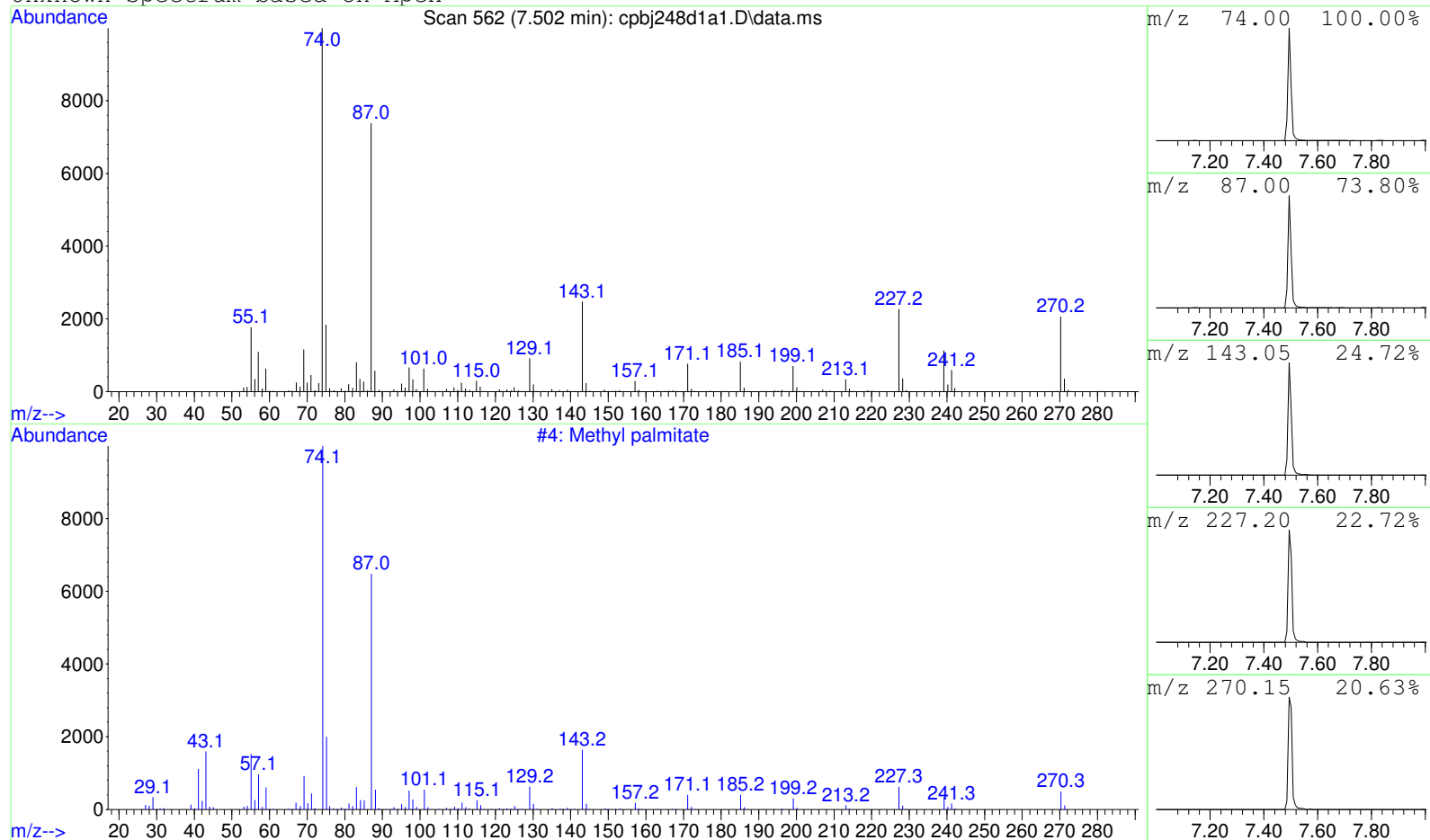
Data Path : D:\GCMS Daten\130320\
Data File : cpbj248d1a1.D
Acq On : 20 Mar 2013 14:07
Operator : JD
Sample : cpbj248d1a1
Misc :
ALS Vial : 14 Sample Multiplier: 1

Search Libraries: C:\DATABASE\DEMO.L Minimum Quality: 0

Unknown Spectrum: Apex
Integration Events: ChemStation Integrator - autoint1.e



Unknown Spectrum based on Apex



Data File: D:\GCMS Daten\130320\cpbj248d1a1.D

Sample : cpbj248d1a1

Peak Number: 1 at 7.502 min Area: 12458476 Area % 0.99

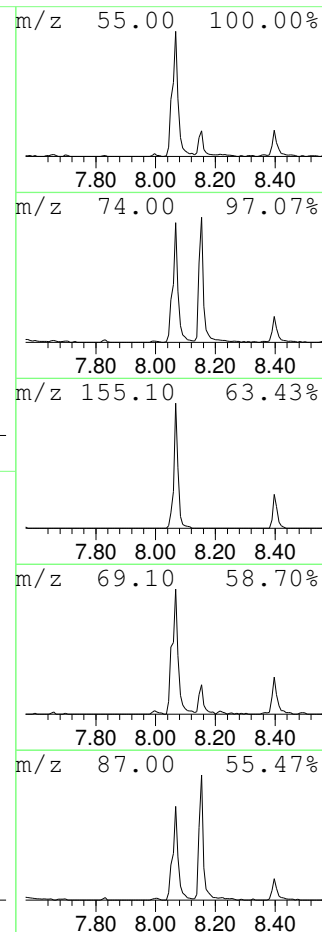
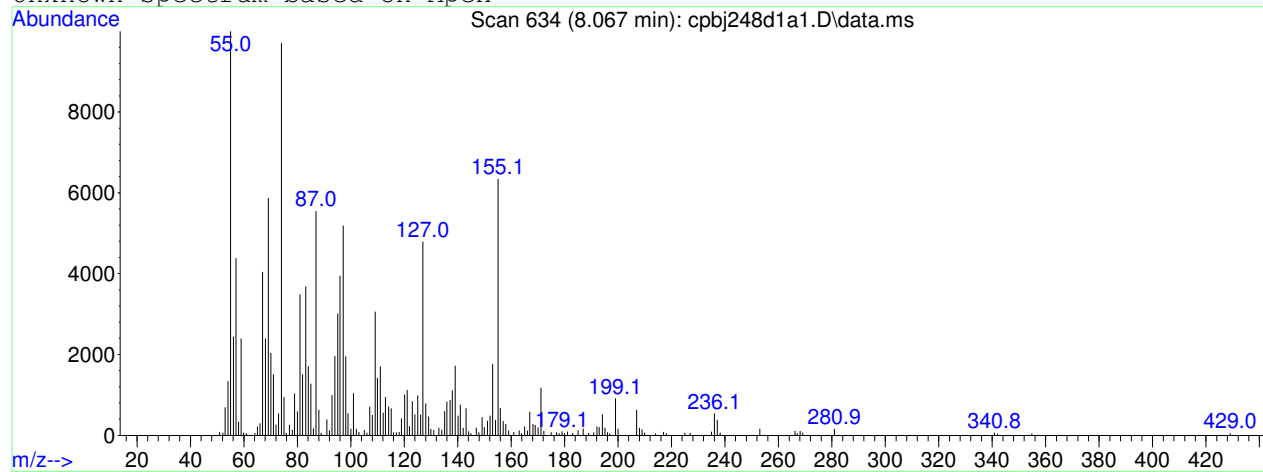
The 3 best hits from each library.

Ref\# CAS\# Qual

C:\DATABASE\DEMO.L
1 Methyl palmitate

4 000112-39-0 98

Unknown Spectrum based on Apex



Data File: D:\GCMS Daten\130320\cpbj248d1a1.D

Sample : cpbj248d1a1

Peak Number: 2 at 8.067 min Area: 7289000 Area % 0.58

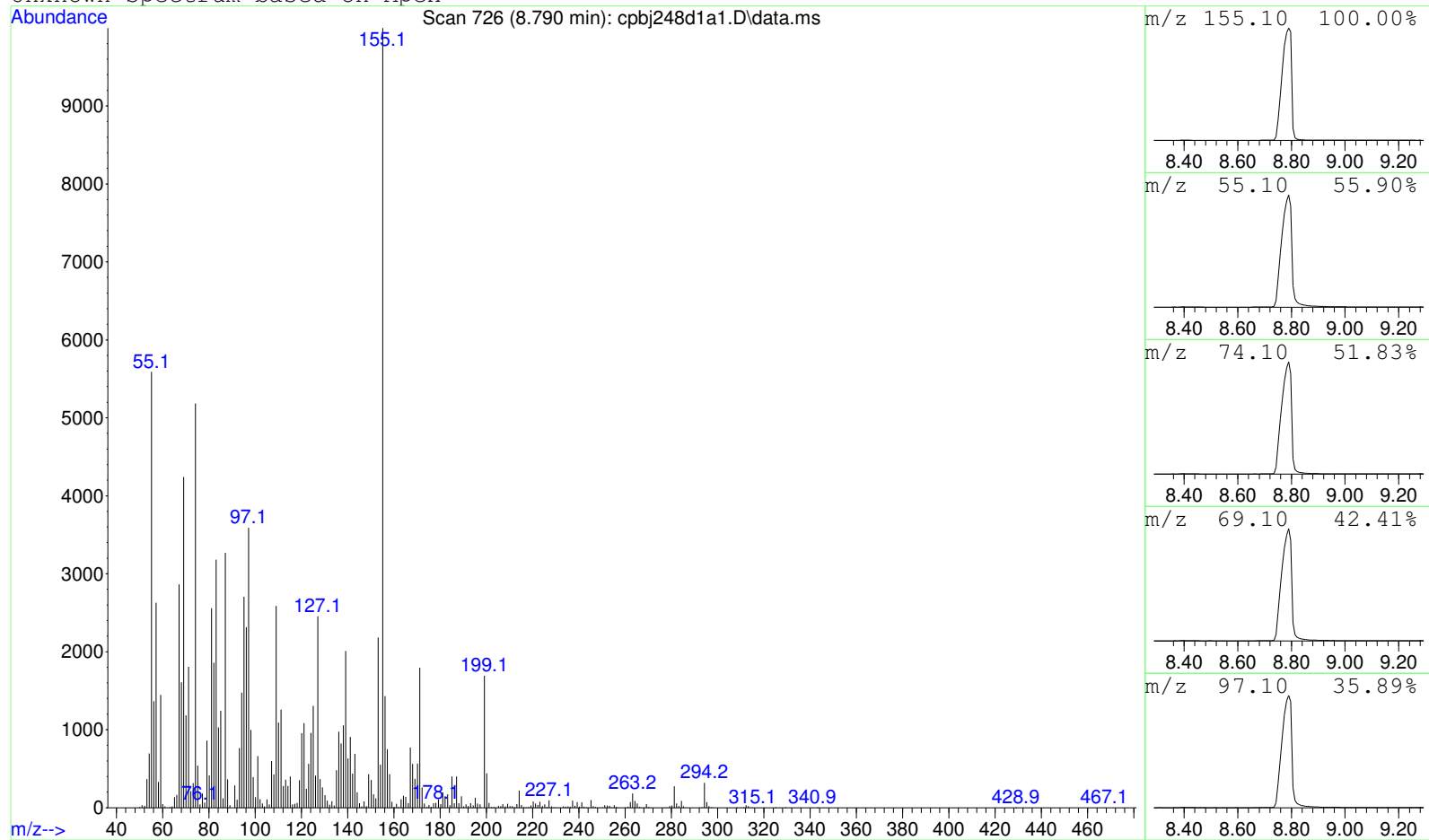
The 3 best hits from each library.

Ref\# CAS\# Qual

C:\DATABASE\DEMO.L
1 Methyl palmitate

4 000112-39-0 9

Unknown Spectrum based on Apex



Data File: D:\GCMS Daten\130320\cpbj248d1a1.D

Sample : cpbj248d1a1

Peak Number: 3 at 8.790 min Area: 1242287625 Area % 98.44

The 3 best hits from each library. Ref\# CAS\# Qual

C:\DATABASE\DEMO.L No hits were retrieved.