

Area Percent Report

Data Path : D:\GCMS Daten\130326\  
 Data File : cpbj248b1gs.D  
 Acq On : 26 Mar 2013 15:18  
 Operator : JD  
 Sample : cpbj248b1gs  
 Misc :  
 ALS Vial : 11 Sample Multiplier: 1

Integration Parameters: autoint1.e  
 Integrator: ChemStation

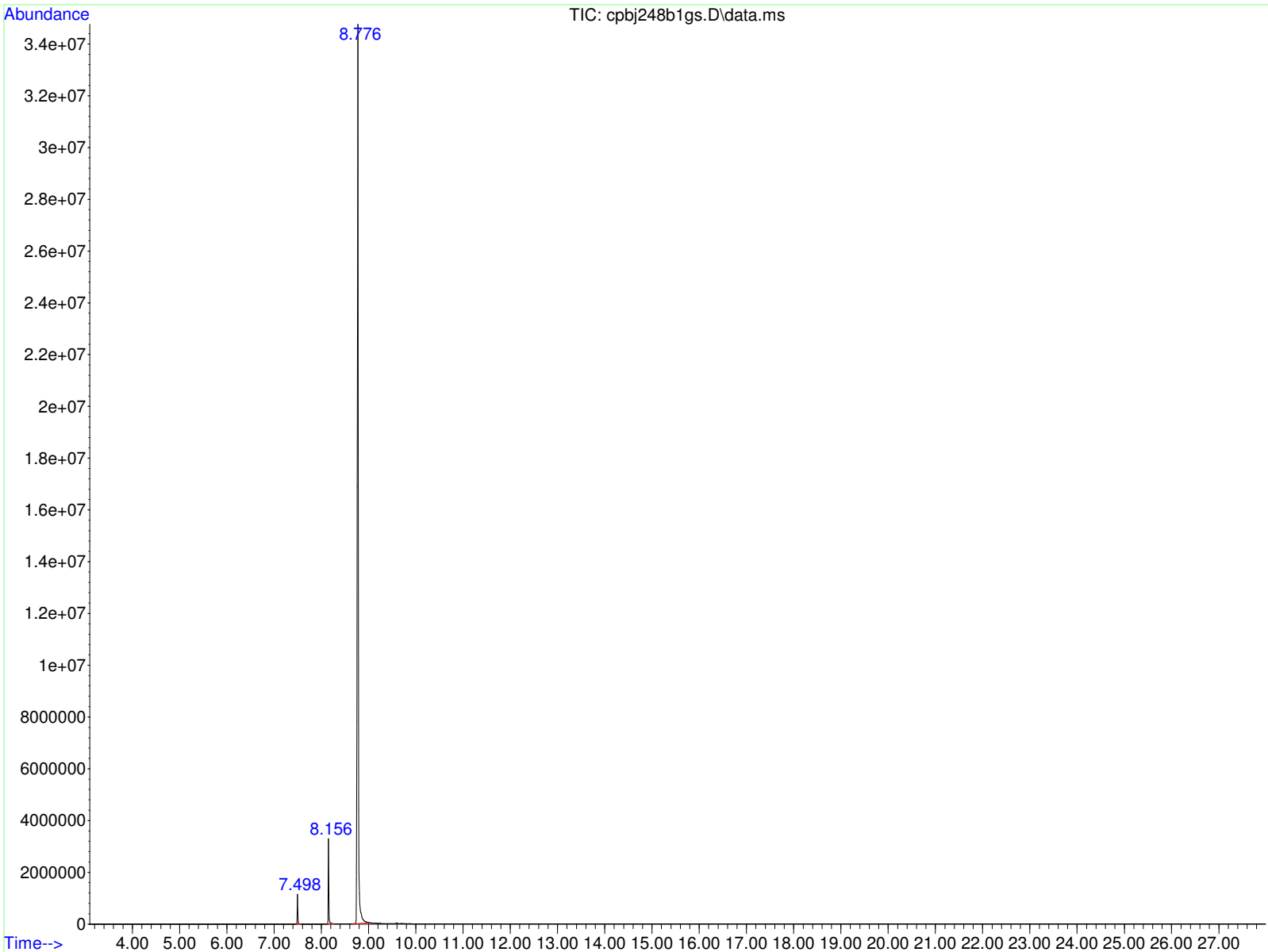
Method : D:\GCMS Daten\130225\ocafk291a.D\STANDARD.M  
 Title :

Signal : TIC: cpbj248b1gs.D\data.ms

peak #	R.T. min	first scan	max scan	last scan	PK TY	peak height	corr. area	corr. % max.	% of total
1	7.498	558	562	569	BB	1022648	9384408	1.65%	1.538%
2	8.156	641	645	657	BB	2949094	30470984	5.34%	4.993%
3	8.776	711	724	756	BB	31729882	570405580	100.00%	93.469%

Sum of corrected areas: 610260972

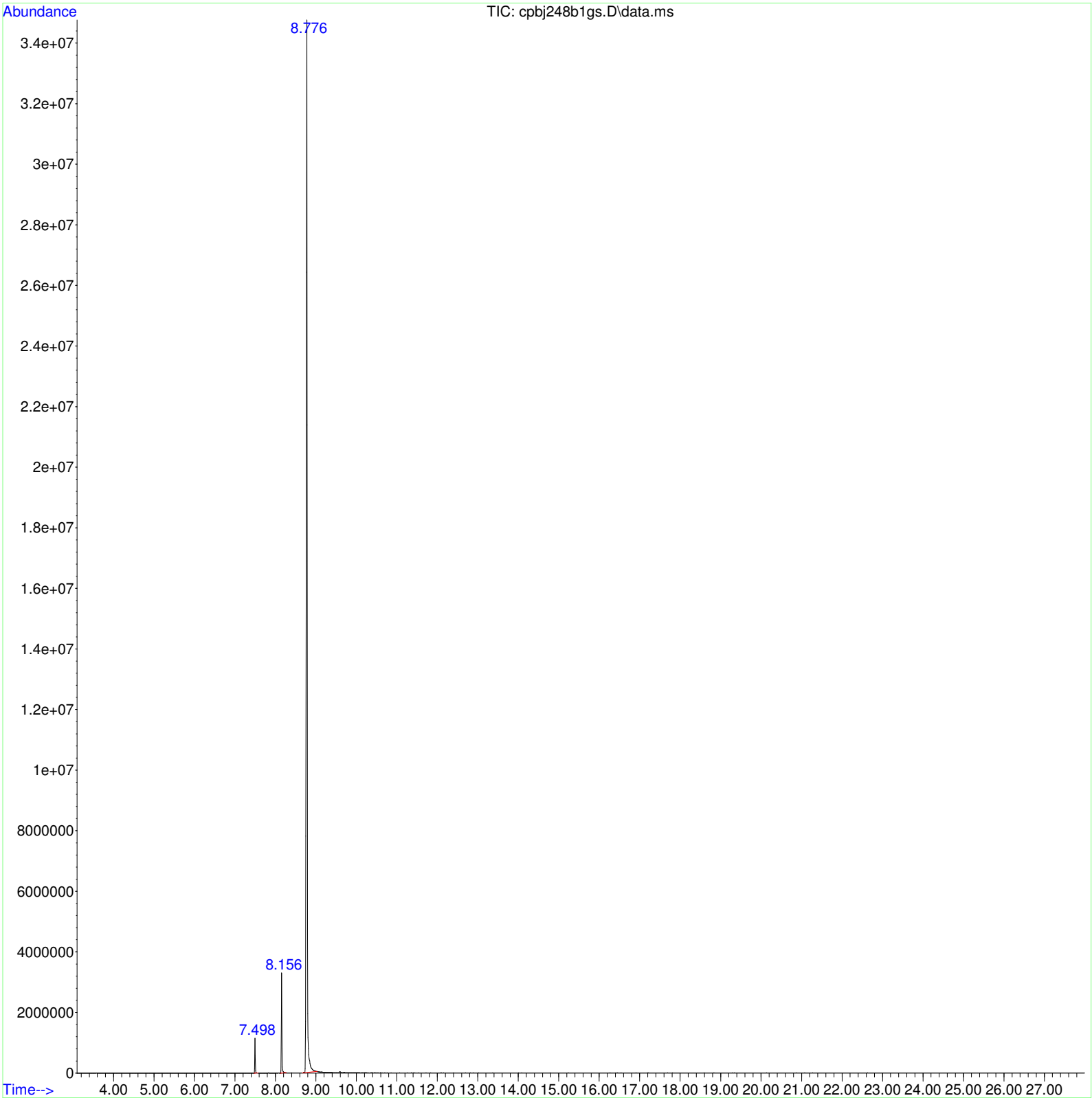
STANDARD.M Wed Mar 27 07:12:02 2013 GCMS



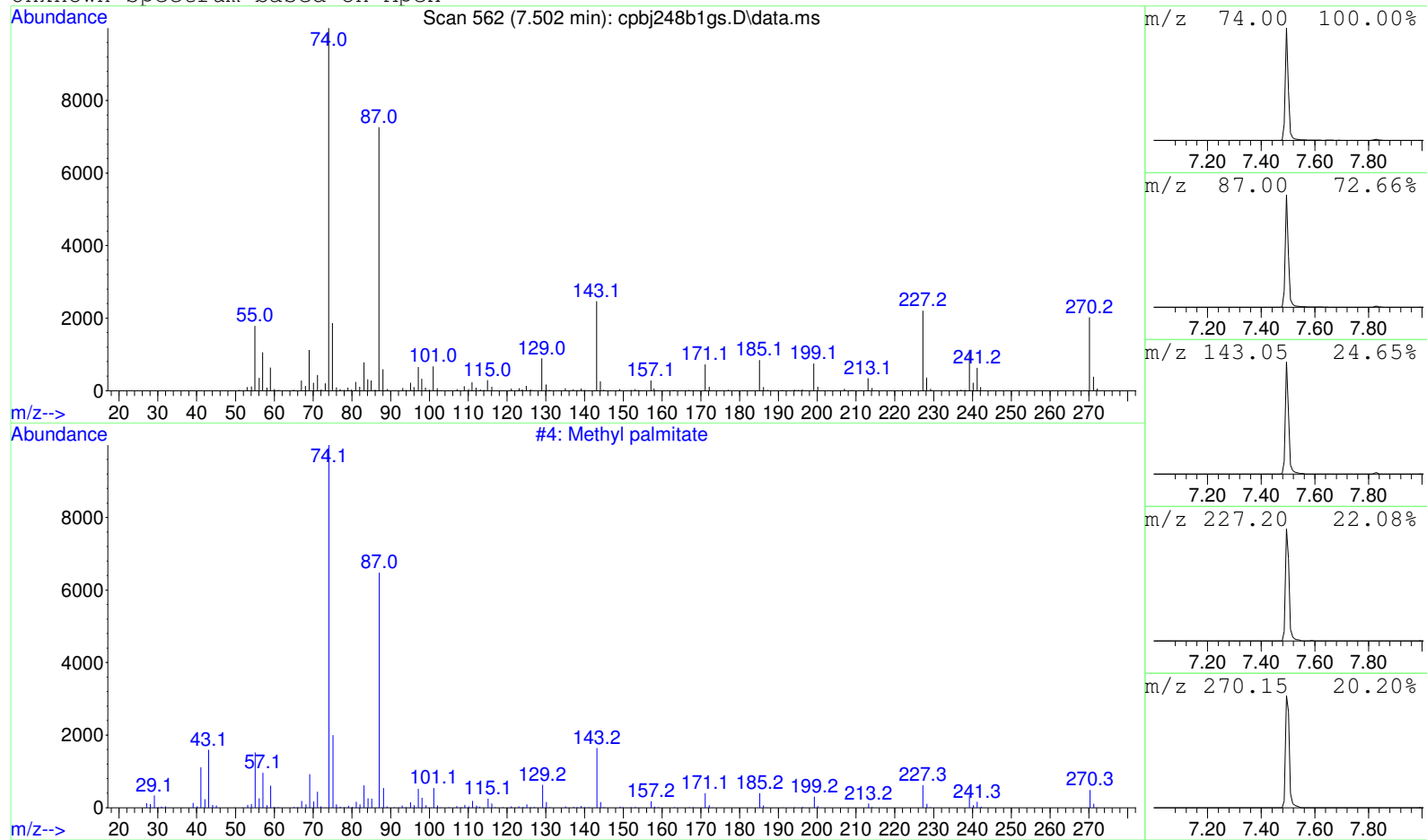
Data Path : D:\GCMS Daten\130326\  
Data File : cpbj248blgs.D  
Acq On : 26 Mar 2013 15:18  
Operator : JD  
Sample : cpbj248blgs  
Misc :  
ALS Vial : 11 Sample Multiplier: 1

Search Libraries: C:\DATABASE\DEMO.L Minimum Quality: 0

Unknown Spectrum: Apex  
Integration Events: ChemStation Integrator - autoint1.e



Unknown Spectrum based on Apex



Data File: D:\GCMS Daten\130326\cpbj248b1gs.D

Sample : cpbj248b1gs

Peak Number: 1 at 7.502 min Area: 9384408 Area % 1.54

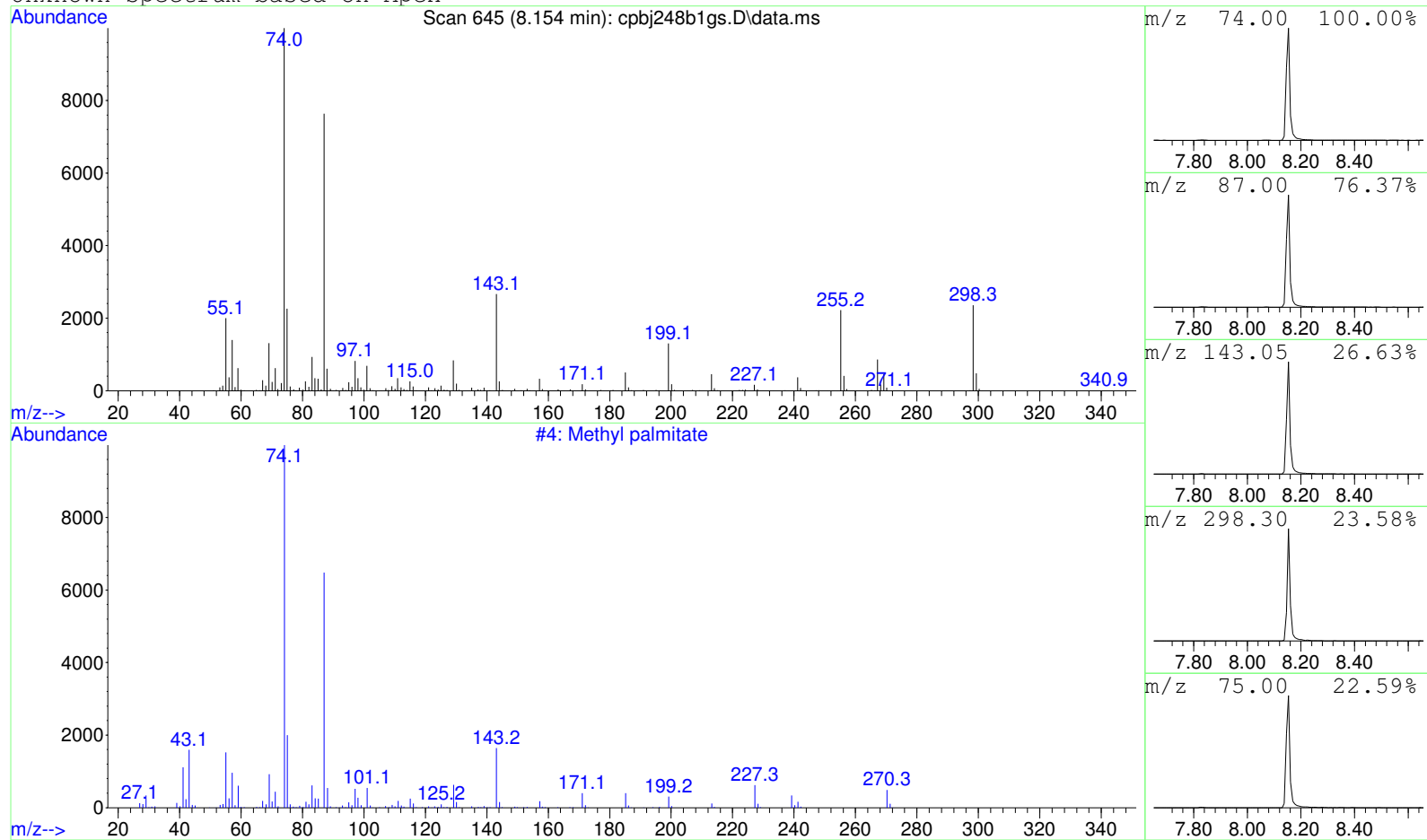
The 3 best hits from each library.

Ref\# CAS\# Qual

C:\DATABASE\DEMO.L  
1 Methyl palmitate

4 000112-39-0 99

Unknown Spectrum based on Apex



Data File: D:\GCMS Daten\130326\cpbj248b1gs.D

Sample : cpbj248b1gs

Peak Number: 2 at 8.154 min Area: 30470984 Area % 4.99

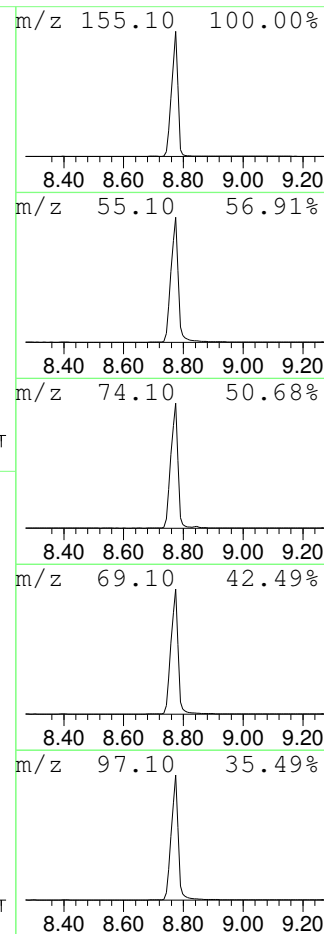
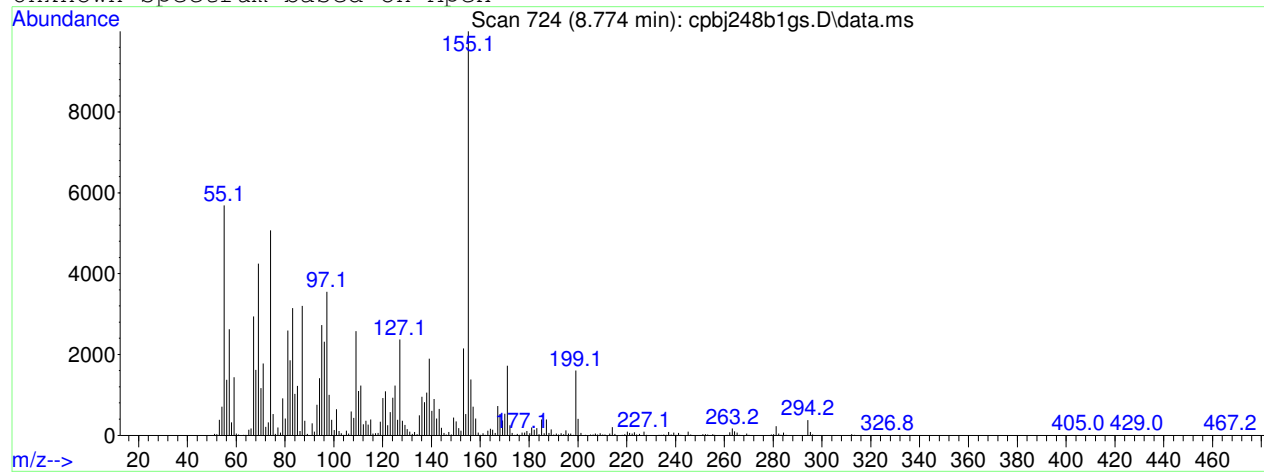
The 3 best hits from each library.

Ref\# CAS\# Qual

C:\DATABASE\DEMO.L  
1 Methyl palmitate

4 000112-39-0 53

Unknown Spectrum based on Apex



Data File: D:\GCMS Daten\130326\cpbj248b1gs.D

Sample : cpbj248b1gs

Peak Number: 3 at 8.774 min Area: 570405580 Area % 93.47

The 3 best hits from each library.

Ref\# CAS\# Qual

C:\DATABASE\DEMO.L  
1 Methyl palmitate

4 000112-39-0 9