

Area Percent Report

Data Path : D:\GCMS Daten\130320\
 Data File : cpbj248b1f16.D
 Acq On : 20 Mar 2013 13:42
 Operator : JD
 Sample : cpbj248b1f16
 Misc :
 ALS Vial : 13 Sample Multiplier: 1

Integration Parameters: autoint1.e
 Integrator: ChemStation

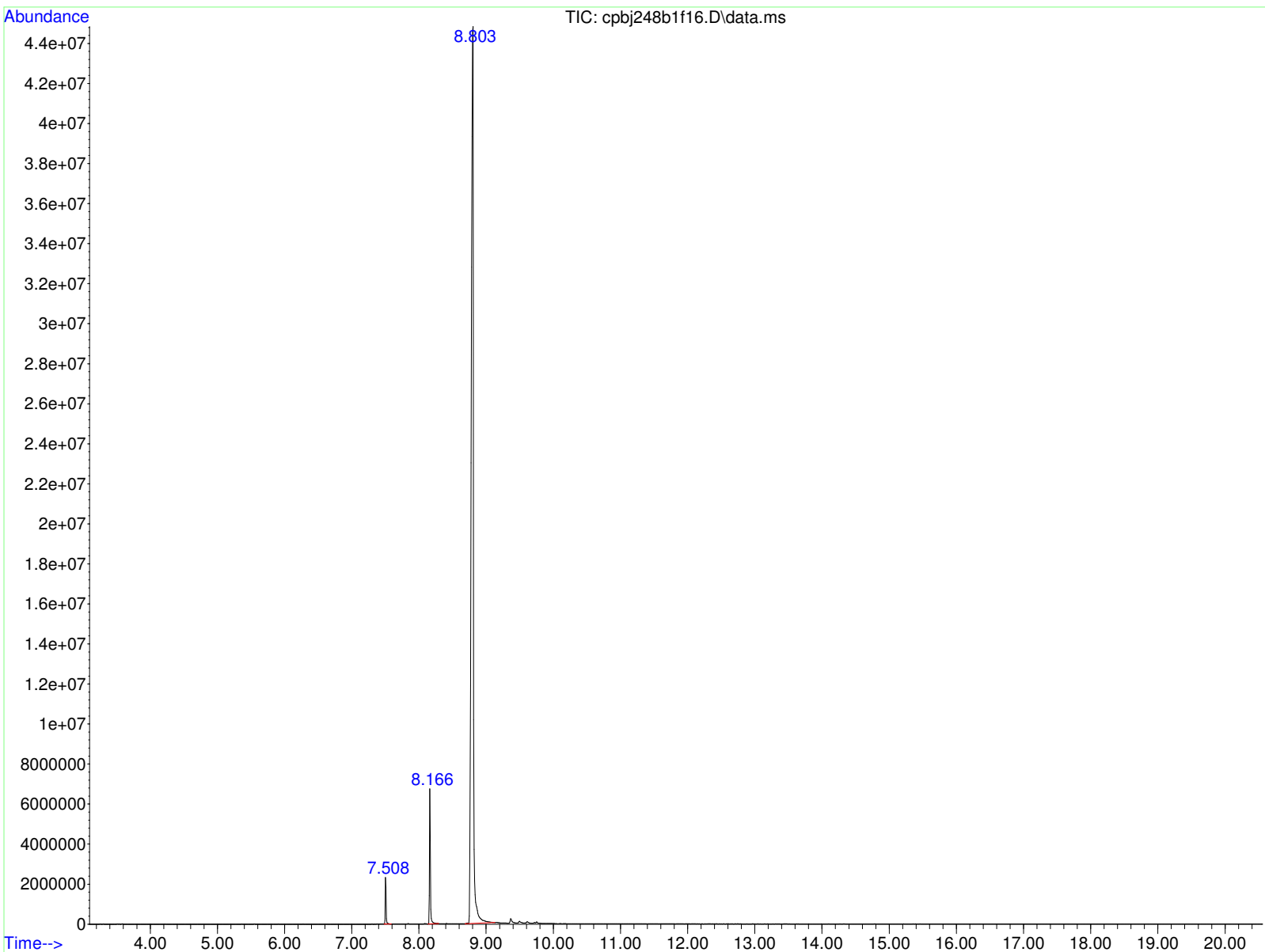
Method : D:\GCMS Daten\130225\ocafk291a.D\STANDARD.M
 Title :

Signal : TIC: cpbj248b1f16.D\data.ms

peak #	R.T. min	first scan	max scan	last scan	PK TY	peak height	corr. area	corr. % max.	% of total
1	7.508	560	563	571	BB	2124638	22472551	2.12%	1.958%
2	8.166	643	647	661	BB	6217174	65227102	6.15%	5.682%
3	8.803	713	728	768	BB	47185398	1060304185	100.00%	92.361%

Sum of corrected areas: 1148003838

STANDARD.M Wed Mar 20 14:41:51 2013 GCMS



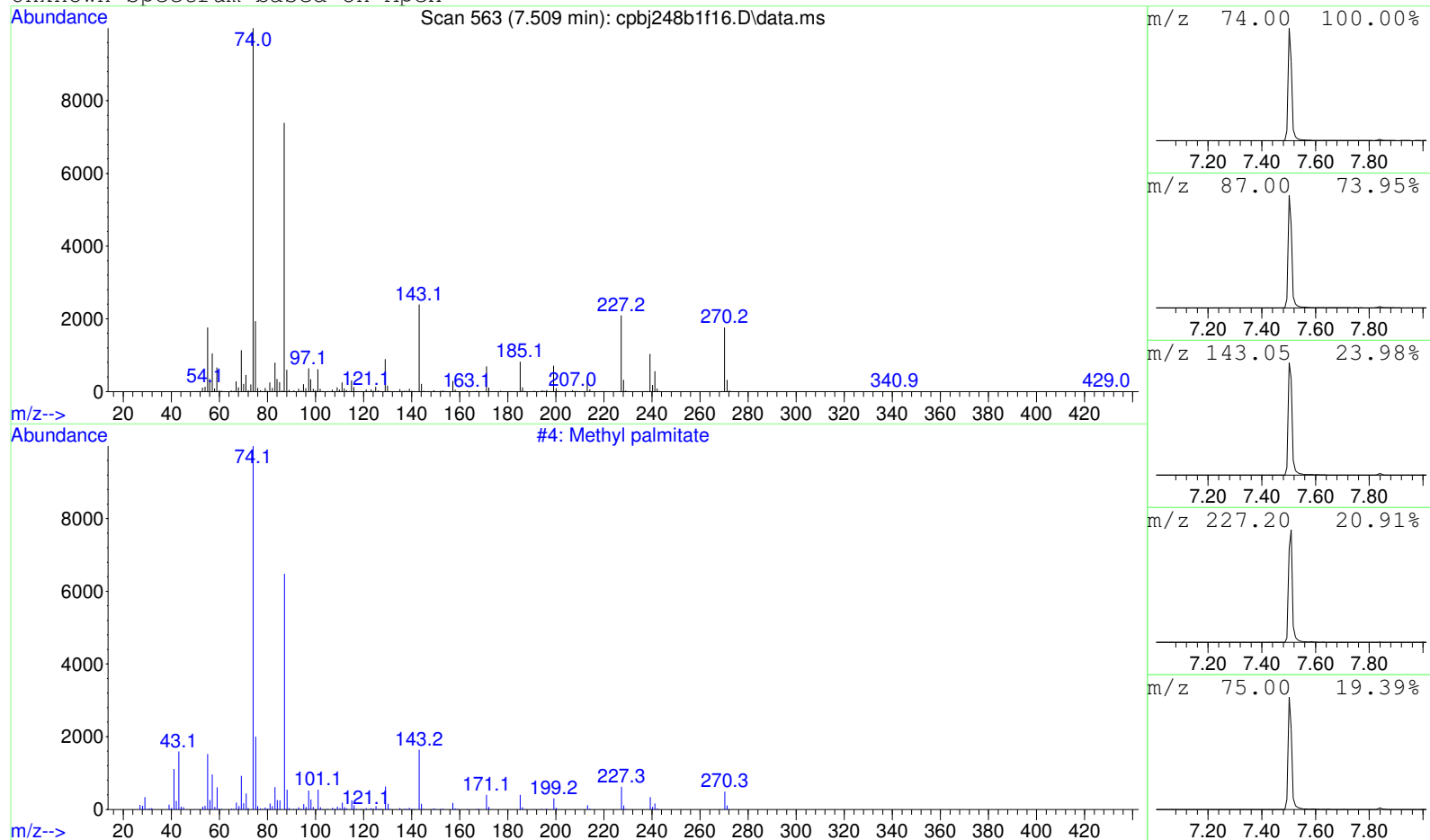
Data Path : D:\GCMS Daten\130320\
Data File : cpbj248b1f16.D
Acq On : 20 Mar 2013 13:42
Operator : JD
Sample : cpbj248b1f16
Misc :
ALS Vial : 13 Sample Multiplier: 1

Search Libraries: C:\DATABASE\DEMO.L Minimum Quality: 0

Unknown Spectrum: Apex
Integration Events: ChemStation Integrator - autoint1.e



Unknown Spectrum based on Apex



Data File: D:\GCMS Daten\130320\cpbj248b1f16.D

Sample : cpbj248b1f16

Peak Number: 1 at 7.509 min Area: 22472551 Area % 1.96

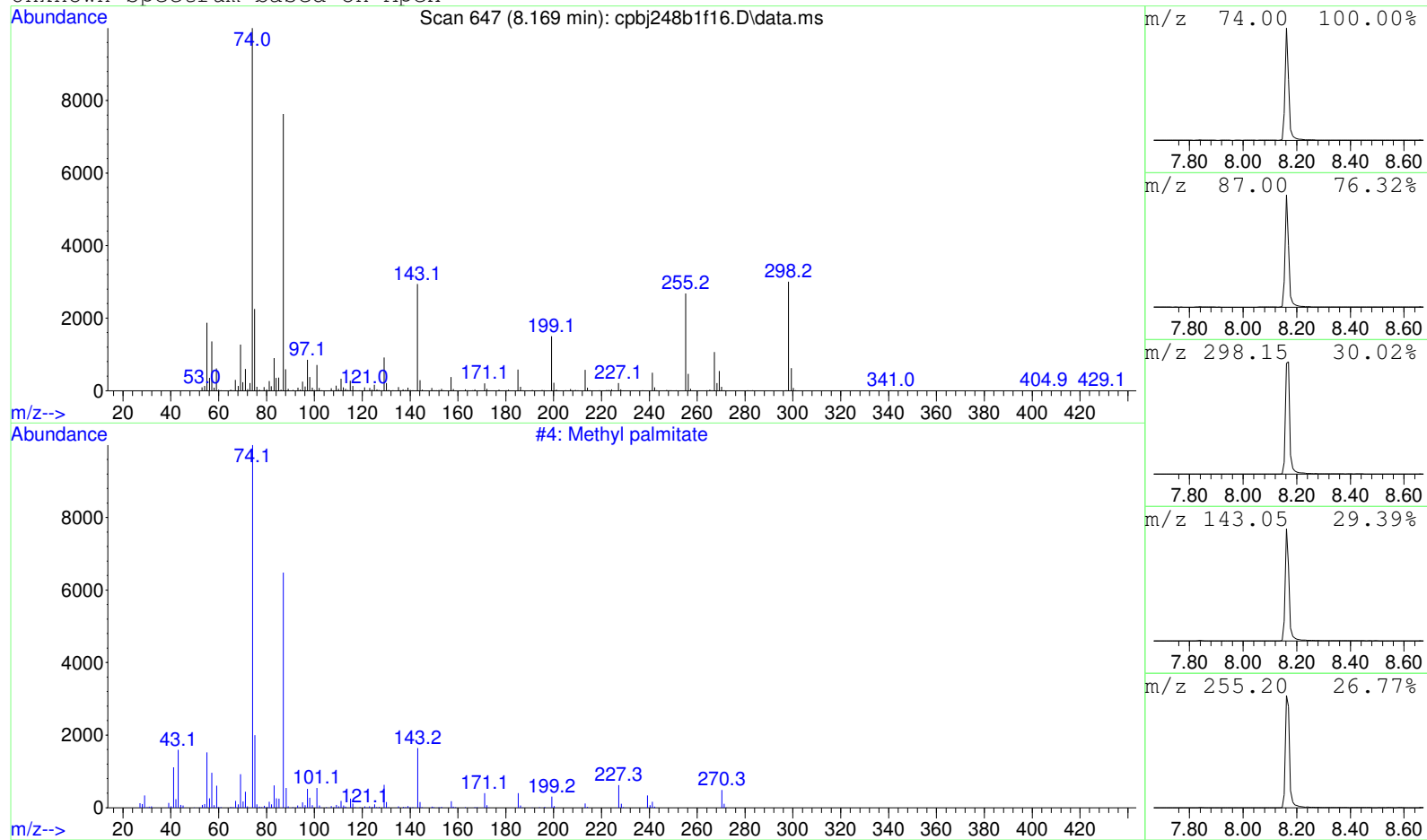
The 3 best hits from each library.

Ref\# CAS\# Qual

C:\DATABASE\DEMO.L
1 Methyl palmitate

4 000112-39-0 98

Unknown Spectrum based on Apex



Data File: D:\GCMS Daten\130320\cpbj248b1f16.D

Sample : cpbj248b1f16

Peak Number: 2 at 8.169 min Area: 65227102 Area % 5.68

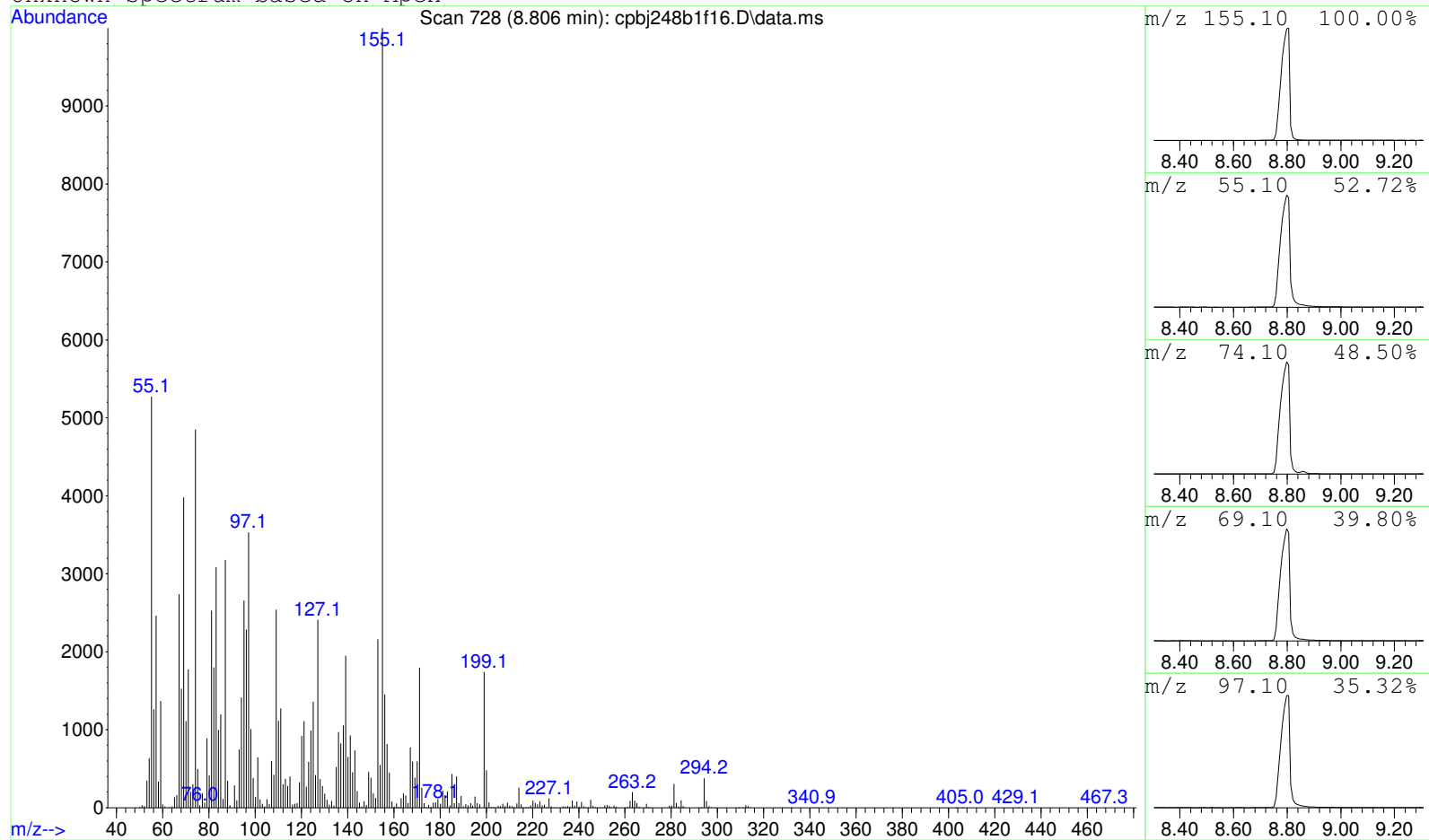
The 3 best hits from each library.

Ref\# CAS\# Qual

C:\DATABASE\DEMO.L
1 Methyl palmitate

4 000112-39-0 1

Unknown Spectrum based on Apex



Data File: D:\GCMS Daten\130320\cpbj248b1f16.D

Sample : cpbj248b1f16

Peak Number: 3 at 8.806 min Area: 1060304185 Area % 92.36

The 3 best hits from each library. Ref\# CAS\# Qual

C:\DATABASE\DEMO.L No hits were retrieved.