

Area Percent Report

Data Path : D:\GCMS Daten\130524\
Data File : cpbj248a4_80_280.D
Acq On : 24 May 2013 12:01
Operator : JD
Sample : cpbj248a4
Misc :
ALS Vial : 1 Sample Multiplier: 1

Integration Parameters: autoint1.e
Integrator: ChemStation

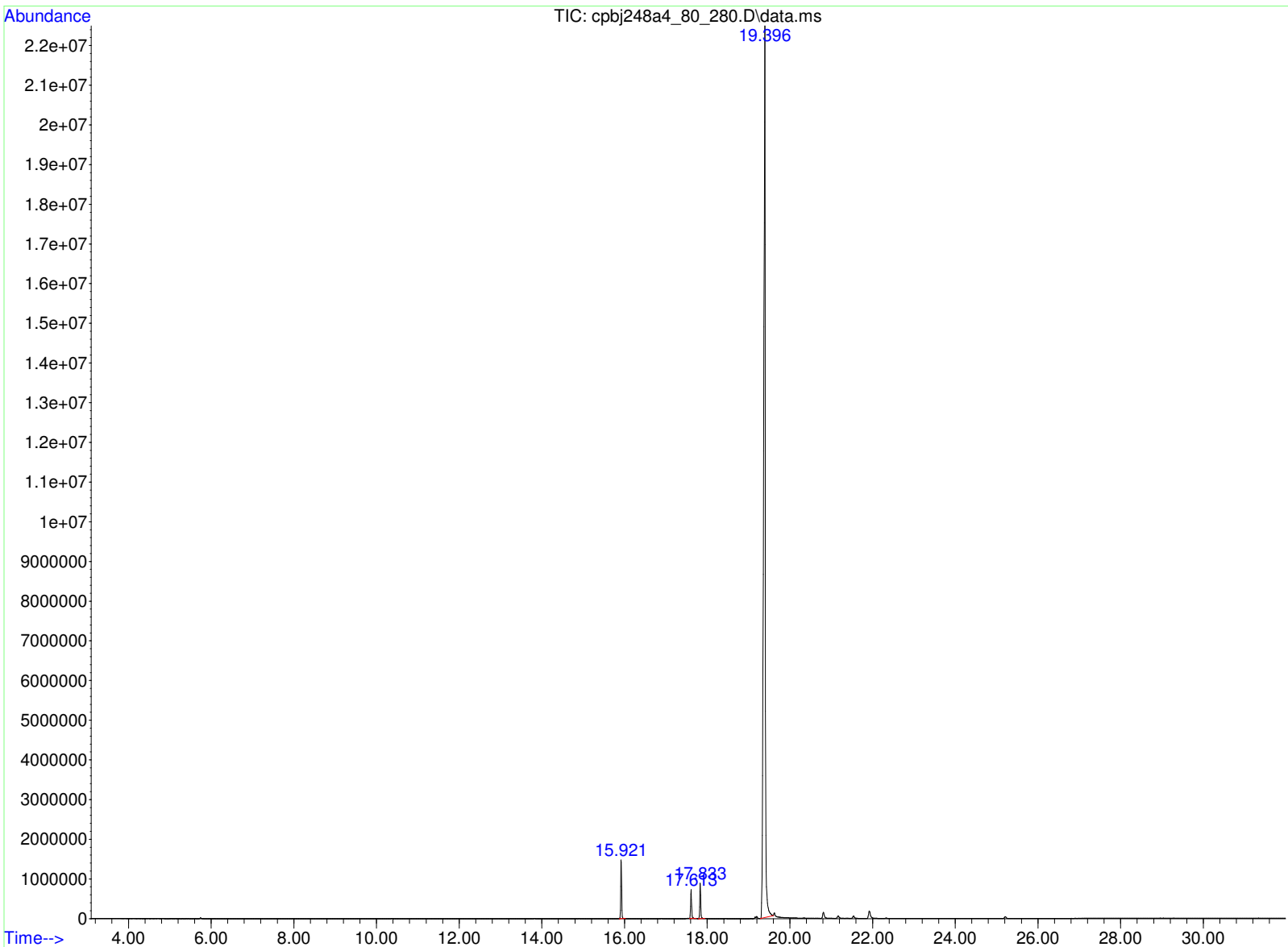
Method : D:\GCMS Daten\130522\ocafk360a.D\STANDARD.M
Title :

Signal : TIC: cpbj248a4_80_280.D\data.ms

peak #	R.T. min	first scan	max scan	last scan	PK TY	peak height	corr. area	corr. % max.	% of total
1	15.921	1628	1634	1644	BB	1487591	23373199	3.61%	3.350%
2	17.613	1844	1849	1862	BB	701429	12239214	1.89%	1.754%
3	17.833	1871	1877	1889	BB	843079	13905537	2.15%	1.993%
4	19.396	2062	2076	2101	BV	22048523	648221242	100.00%	92.903%

Sum of corrected areas: 697739192

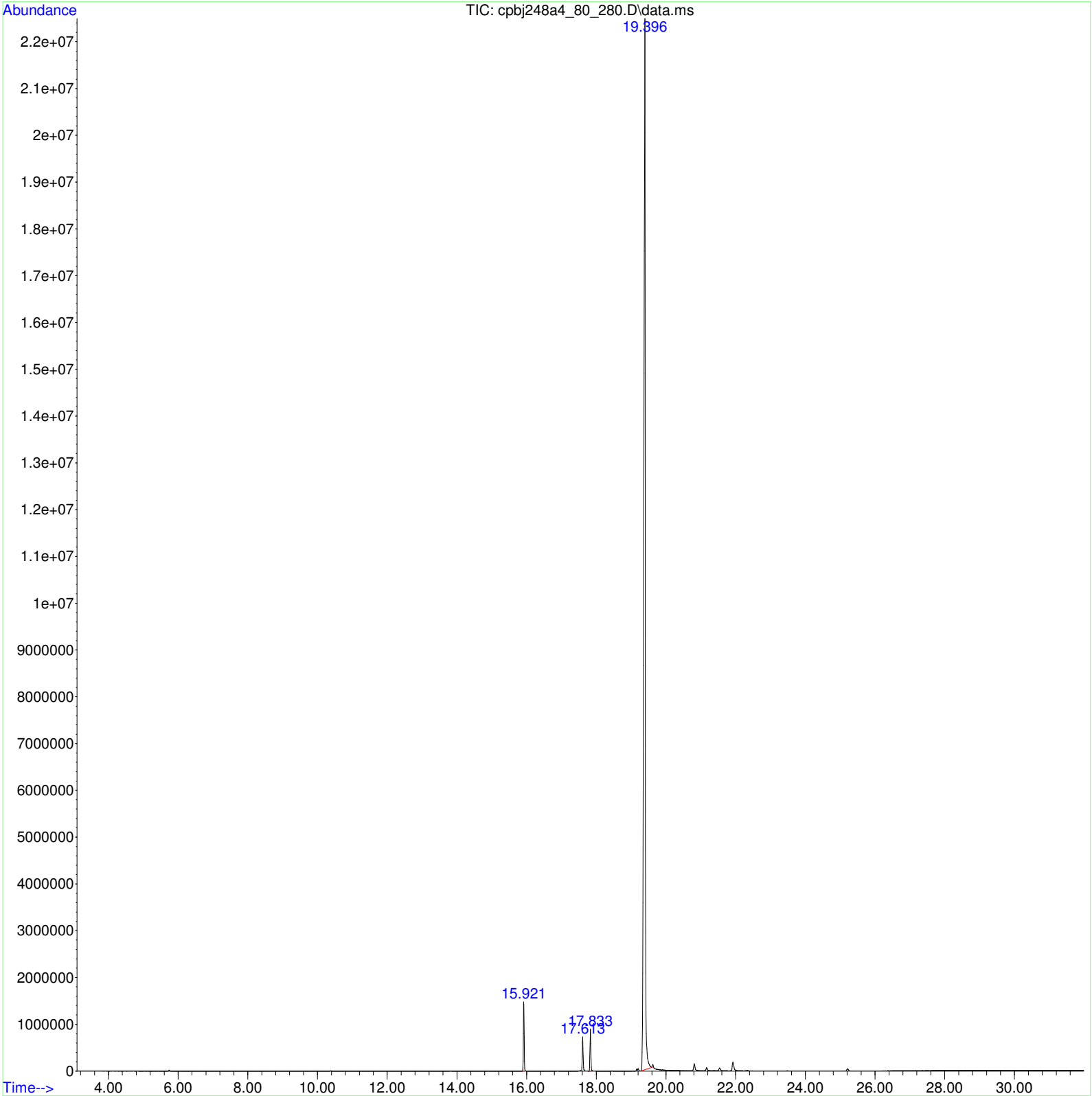
STANDARD.M Fri May 24 13:16:43 2013 GCMS



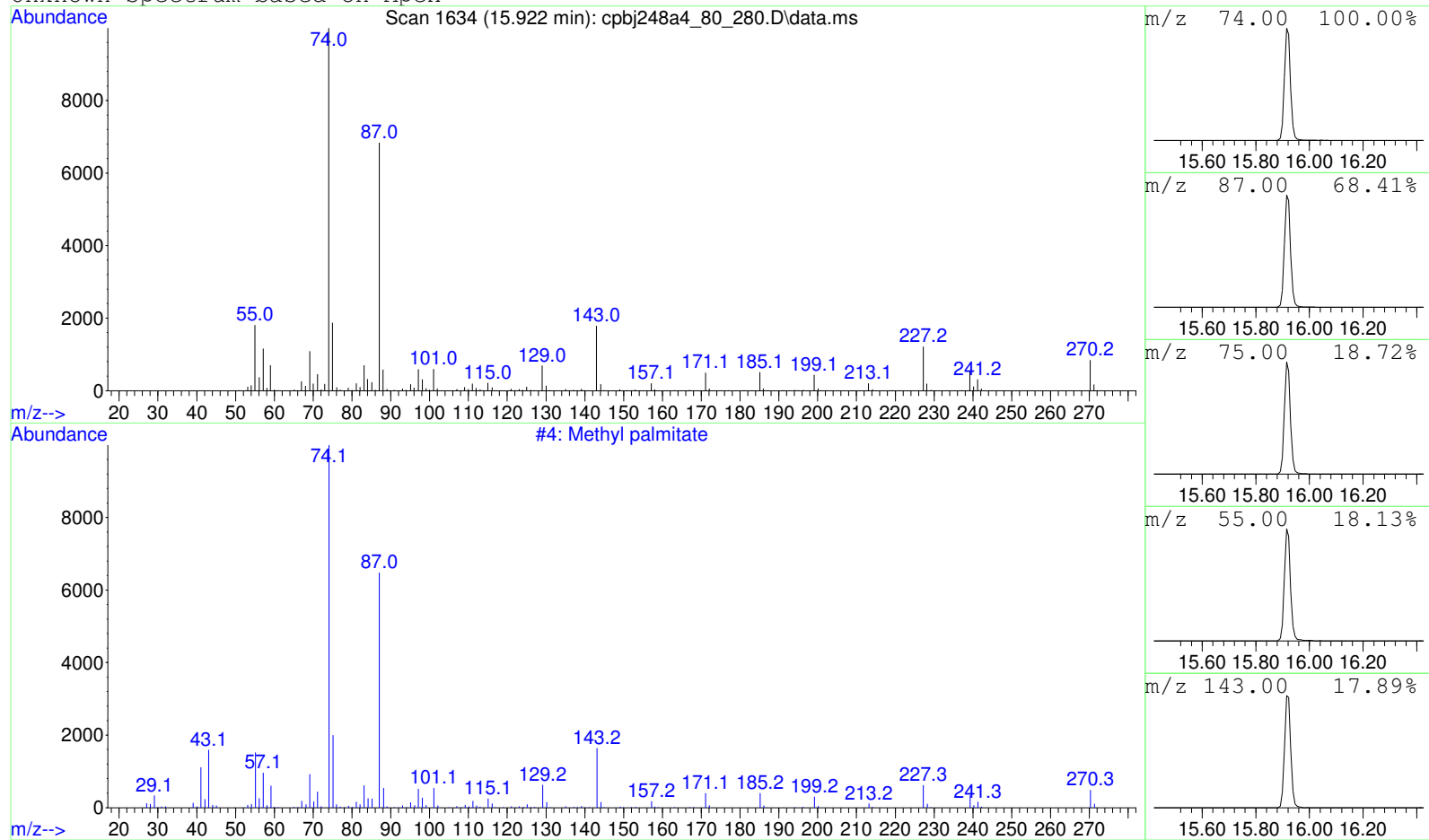
Data Path : D:\GCMS Daten\130524\
Data File : cpbj248a4_80_280.D
Acq On : 24 May 2013 12:01
Operator : JD
Sample : cpbj248a4
Misc :
ALS Vial : 1 Sample Multiplier: 1

Search Libraries: C:\DATABASE\DEMO.L Minimum Quality: 0

Unknown Spectrum: Apex
Integration Events: ChemStation Integrator - autoint1.e



Unknown Spectrum based on Apex



Data File: D:\GCMS Daten\130524\cpbj248a4_80_280.D

Sample : cpbj248a4

Peak Number: 1 at 15.922 min Area: 23378060 Area % 3.35

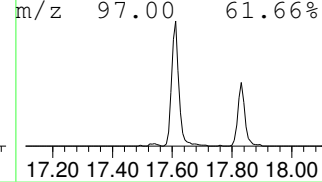
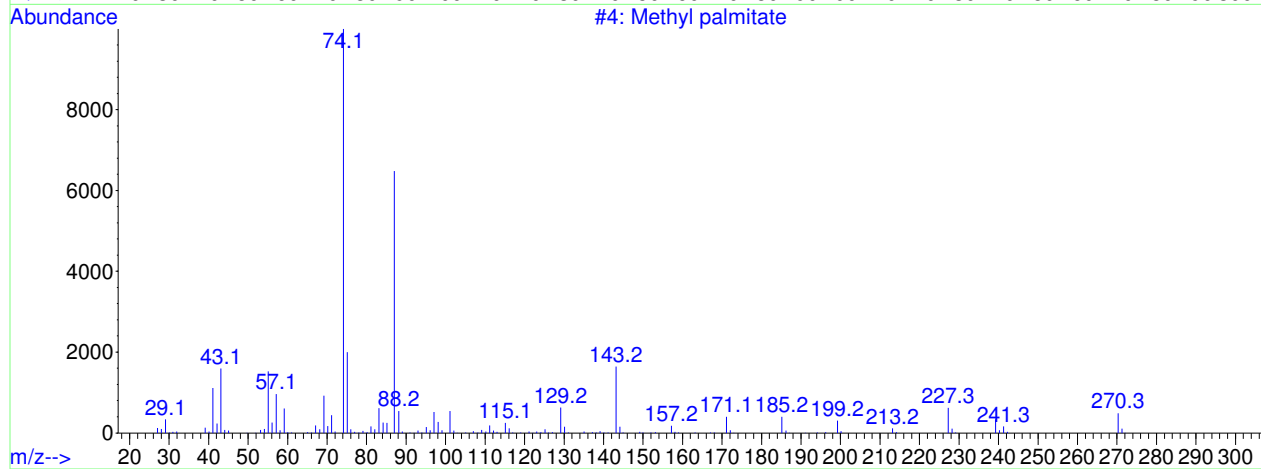
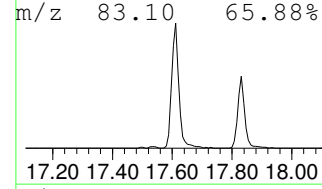
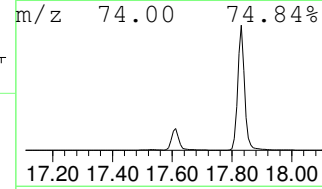
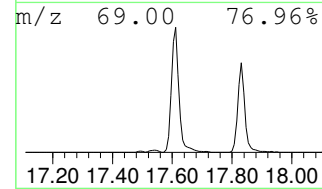
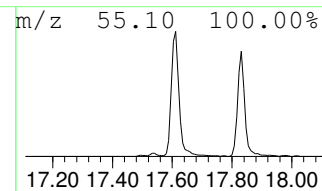
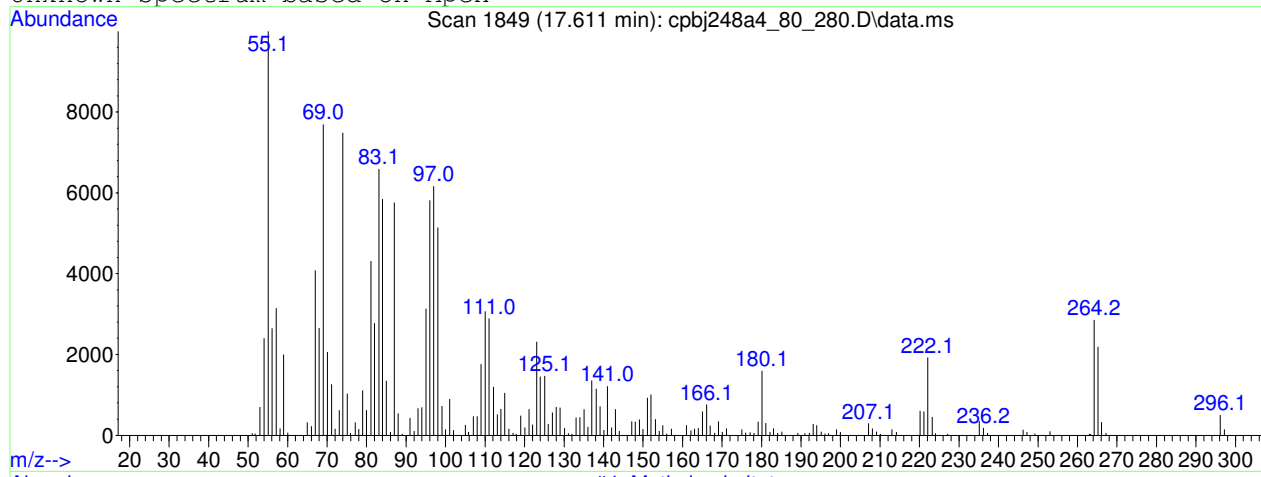
The 3 best hits from each library.

Ref\# CAS\# Qual

C:\DATABASE\DEMO.L
1 Methyl palmitate

4 000112-39-0 99

Unknown Spectrum based on Apex



Data File: D:\GCMS Daten\130524\cpbj248a4_80_280.D

Sample : cpbj248a4

Peak Number: 2 at 17.611 min Area: 12239214 Area % 1.75

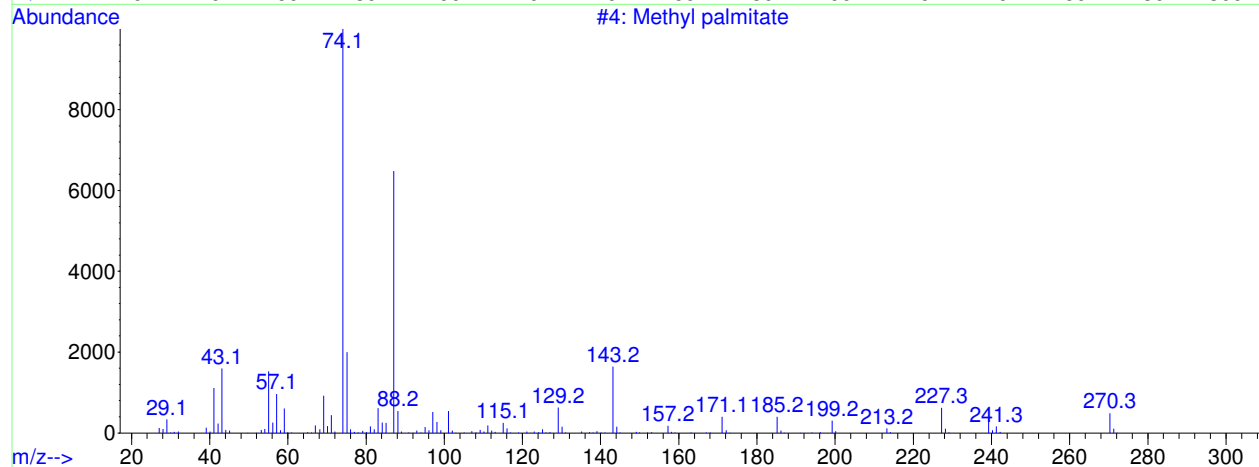
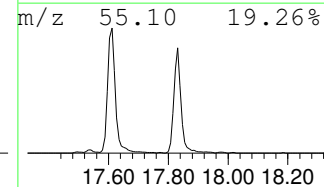
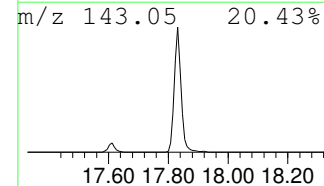
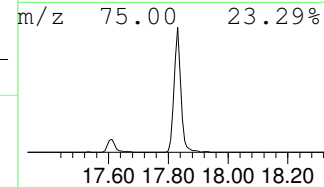
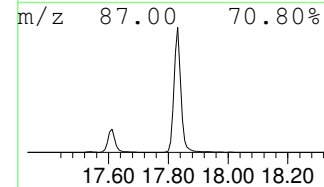
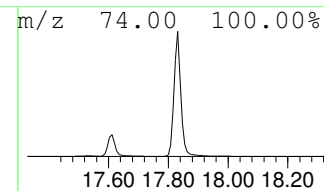
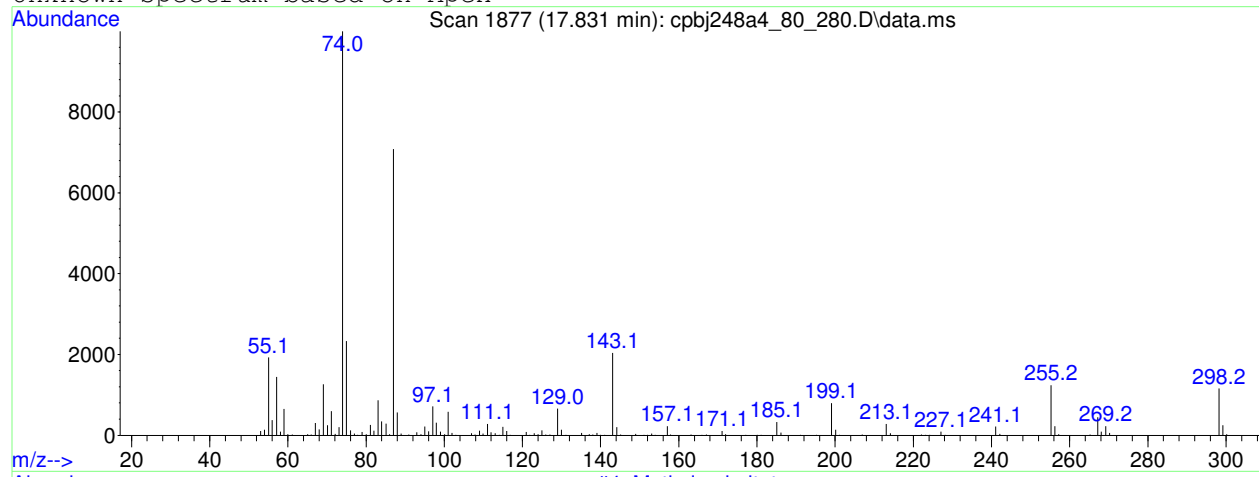
The 3 best hits from each library.

Ref\# CAS\# Qual

C:\DATABASE\DEMO.L
1 Methyl palmitate

4 000112-39-0 9

Unknown Spectrum based on Apex



Data File: D:\GCMS Daten\130524\cpbj248a4_80_280.D

Sample : cpbj248a4

Peak Number: 3 at 17.831 min Area: 13905537 Area % 1.99

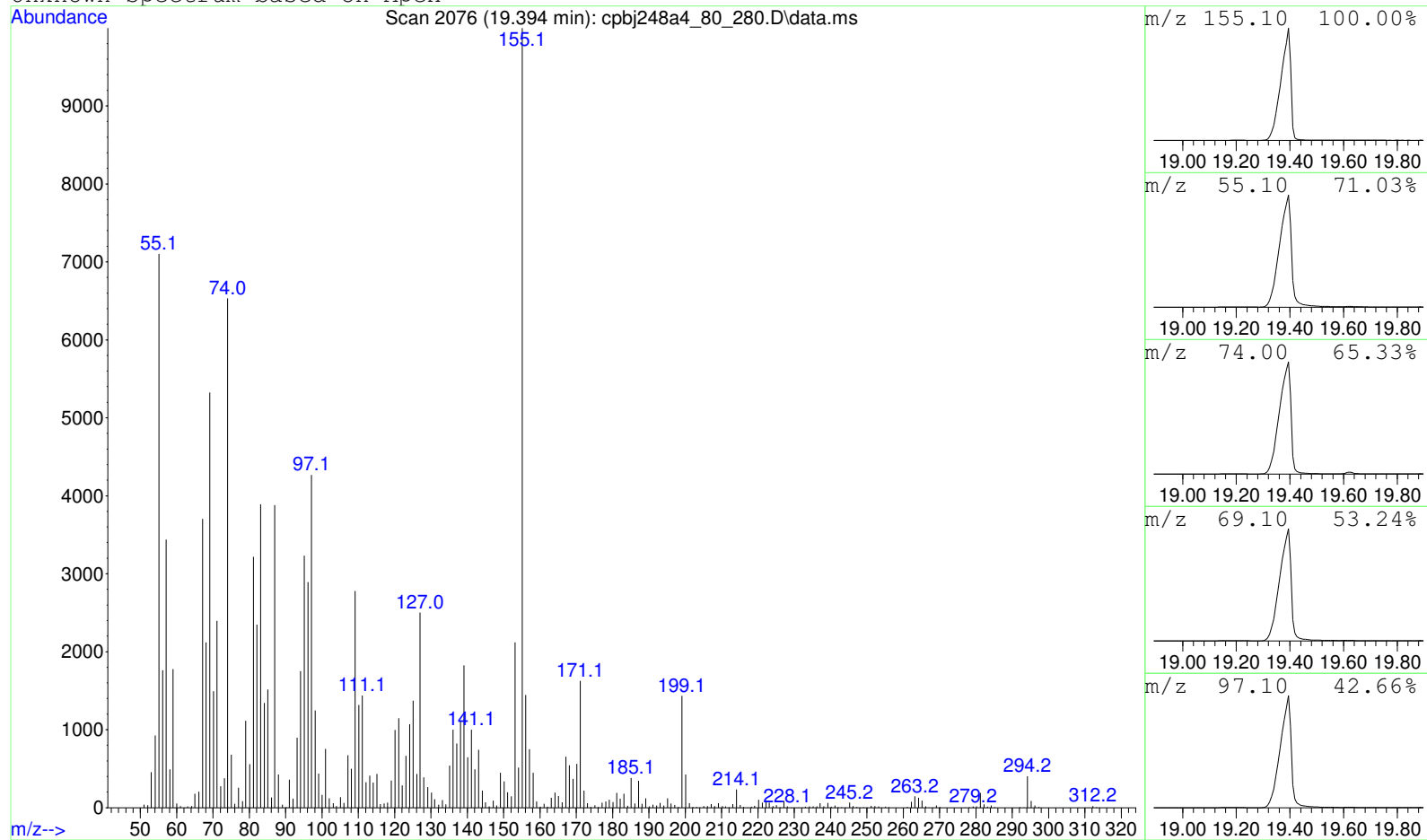
The 3 best hits from each library.

Ref\# CAS\# Qual

C:\DATABASE\DEMO.L
1 Methyl palmitate

4 000112-39-0 72

Unknown Spectrum based on Apex



Data File: D:\GCMS Daten\130524\cpbj248a4_80_280.D

Sample : cpbj248a4

Peak Number: 4 at 19.394 min Area: 648221242 Area % 92.90

The 3 best hits from each library. Ref\# CAS\# Qual

C:\DATABASE\DEMO.L No hits were retrieved.