

Area Percent Report

Data Path : D:\GCMS Daten\130524\
Data File : cpbj248a4.D
Acq On : 24 May 2013 9:49
Operator : JD
Sample : cpbj248a4
Misc :
ALS Vial : 1 Sample Multiplier: 1

Integration Parameters: autoint1.e
Integrator: ChemStation

Method : D:\GCMS Daten\130522\ocafk360a.D\STANDARD.M
Title :

Signal : TIC: cpbj248a4.D\data.ms

peak #	R.T. min	first scan	max scan	last scan	PK TY	peak height	corr. area	corr. % max.	% of total
1	1.701	115	118	132	BB 2	12652399	233851630	100.00%	91.358%
2	14.623	2597	2609	2625	BB	1001342	22121645	9.46%	8.642%

Sum of corrected areas: 255973275

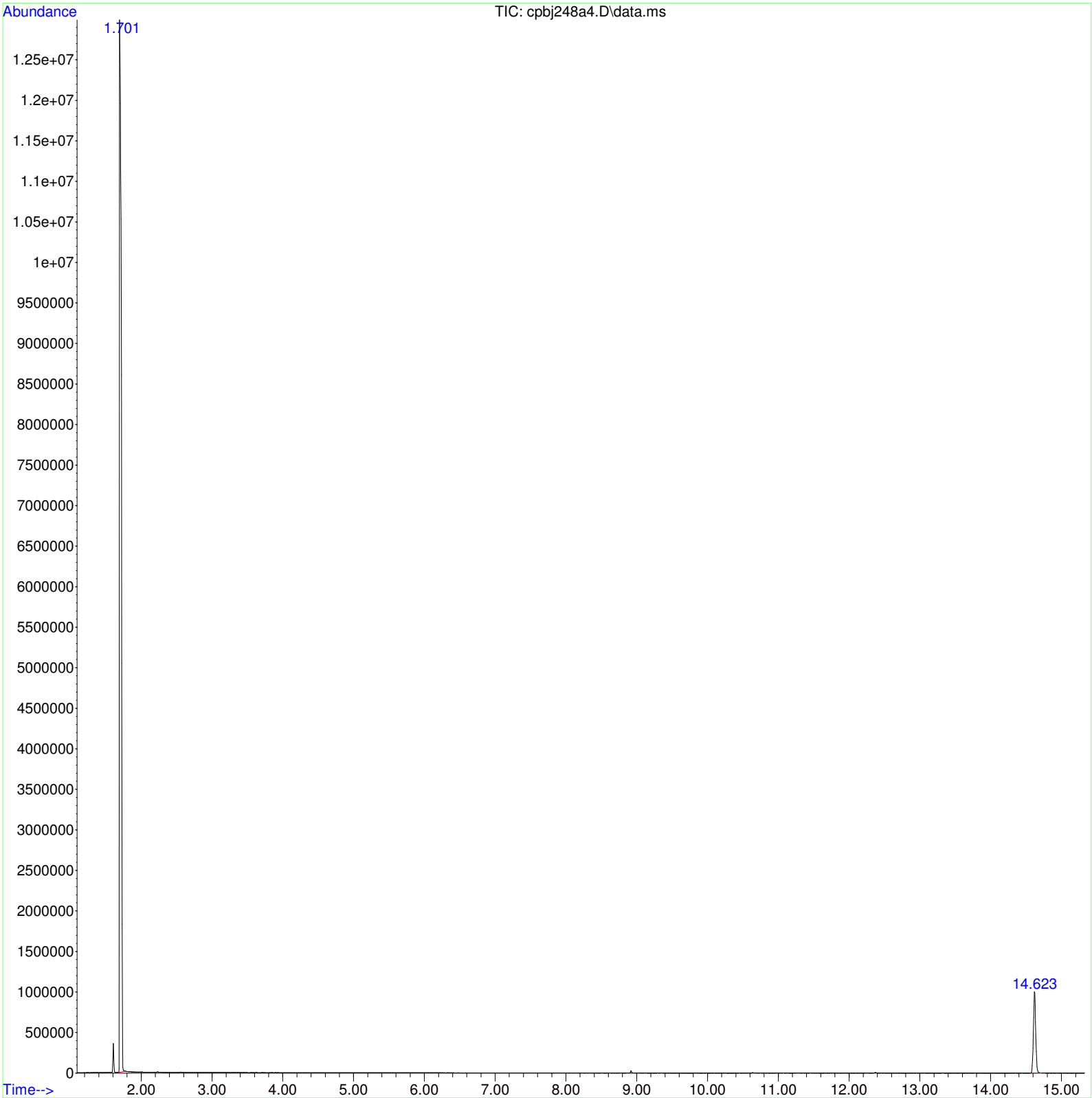
STANDARD.M Fri May 24 11:07:02 2013 GCMS



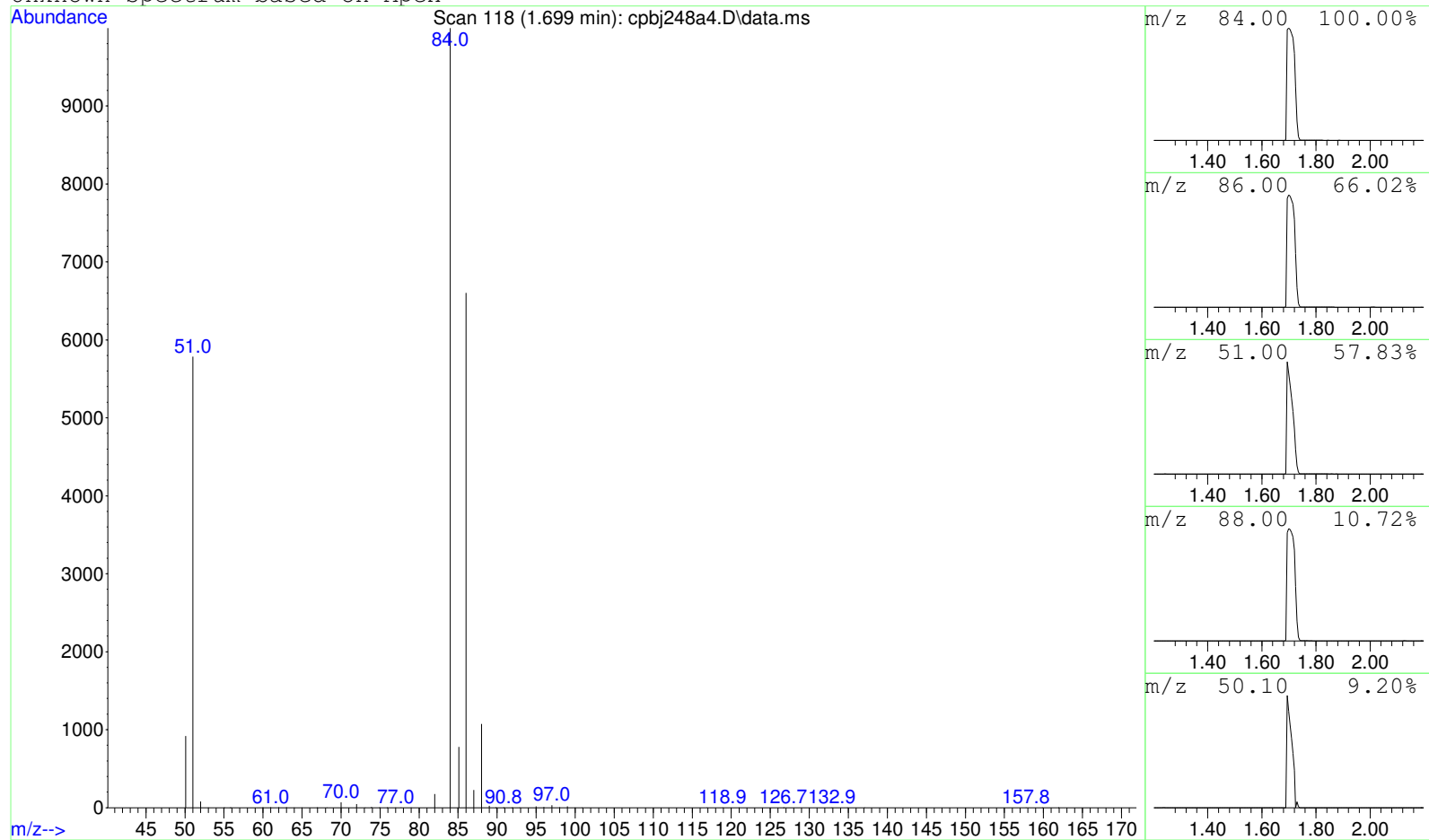
Data Path : D:\GCMS Daten\130524\
Data File : cpbj248a4.D
Acq On : 24 May 2013 9:49
Operator : JD
Sample : cpbj248a4
Misc :
ALS Vial : 1 Sample Multiplier: 1

Search Libraries: C:\DATABASE\DEMO.L Minimum Quality: 0

Unknown Spectrum: Apex
Integration Events: ChemStation Integrator - autoint1.e



Unknown Spectrum based on Apex



Data File: D:\GCMS Daten\130524\cpbj248a4.D

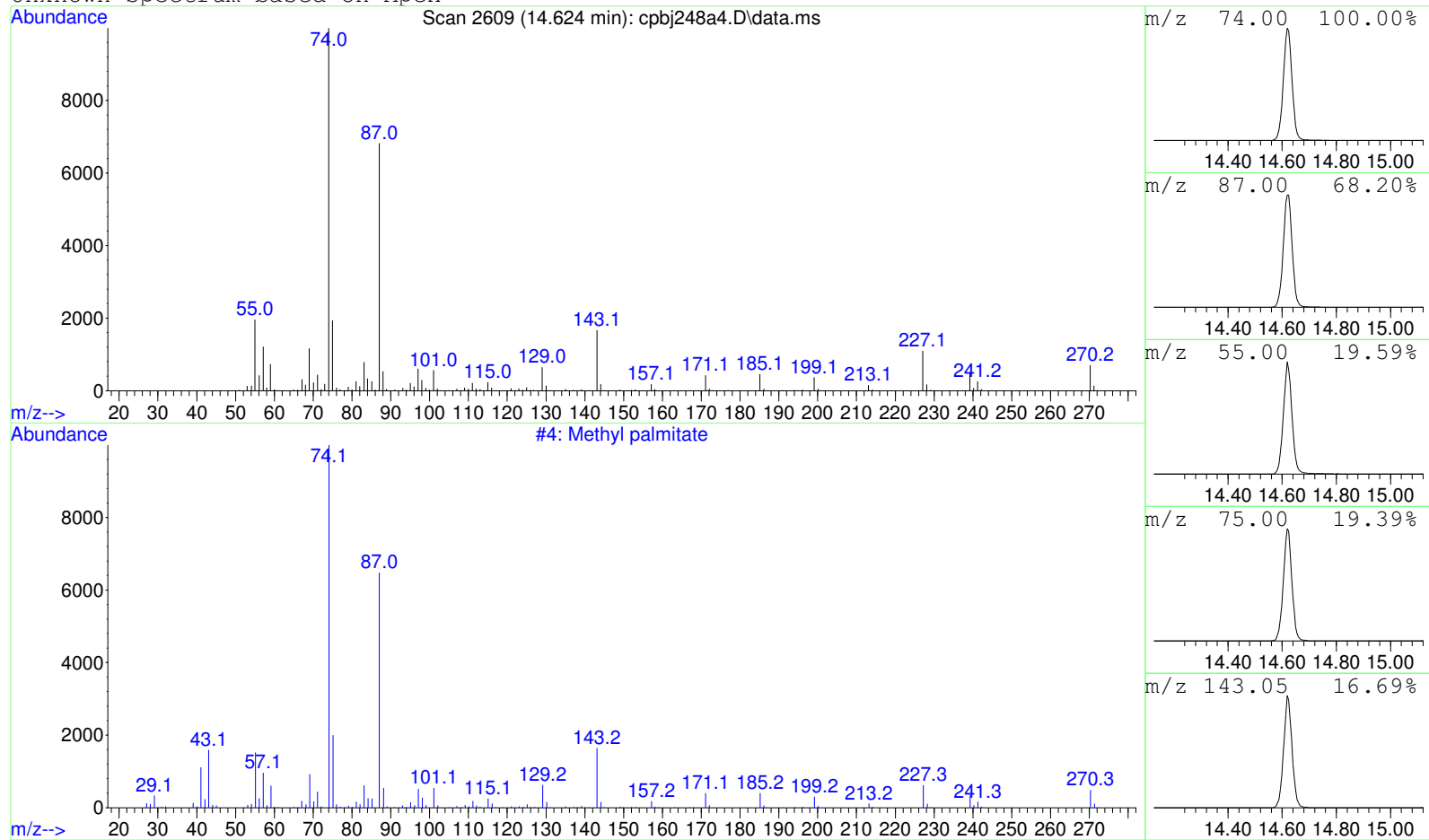
Sample : cpbj248a4

Peak Number: 1 at 1.699 min Area: 233851630 Area % 91.36

The 3 best hits from each library. Ref\# CAS\# Qual

C:\DATABASE\DEMO.L No hits were retrieved.

Unknown Spectrum based on Apex



Data File: D:\GCMS Daten\130524\cpbj248a4.D

Sample : cpbj248a4

Peak Number: 2 at 14.624 min Area: 22121645 Area % 8.64

The 3 best hits from each library.

Ref\# CAS\# Qual

C:\DATABASE\DEMO.L
1 Methyl palmitate

4 000112-39-0 99