

Area Percent Report

Data Path : D:\GCMS Daten\130503\
Data File : cpbj245e2d.D
Acq On : 3 May 2013 11:03
Operator : JD
Sample : cpbj245e2d
Misc :
ALS Vial : 27 Sample Multiplier: 1

Integration Parameters: autoint1.e
Integrator: ChemStation

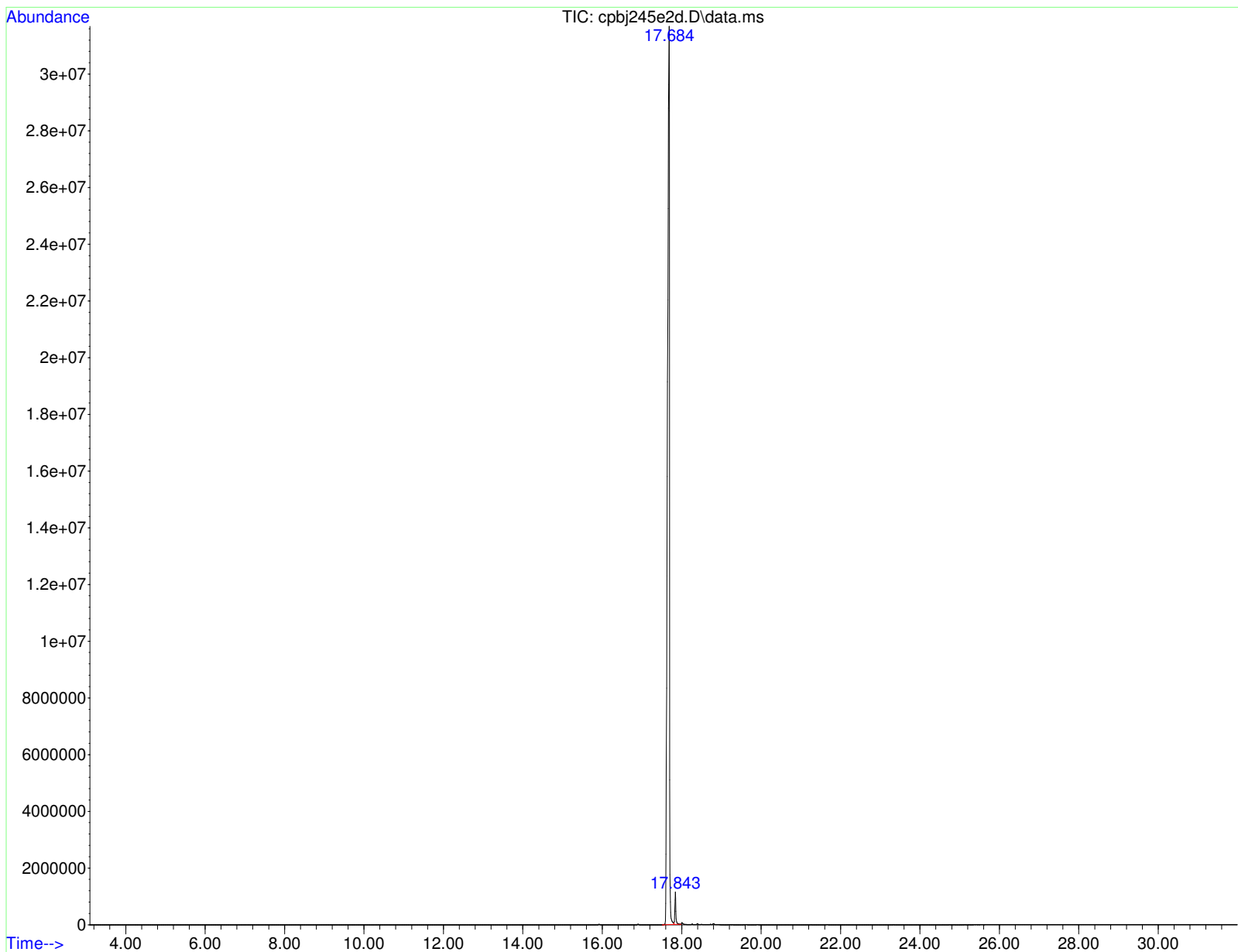
Method : D:\GCMS Daten\130423\ocafk345r.D\STANDARD.M
Title :

Signal : TIC: cpbj245e2d.D\data.ms

peak #	R.T. min	first scan	max scan	last scan	PK TY	peak height	corr. area	corr. % max.	% of total
1	17.684	1837	1858	1873	BV 2	30896918	1130305978	100.00%	98.192%
2	17.843	1873	1879	1894	VB	1086678	20808625	1.84%	1.808%

Sum of corrected areas: 1151114602

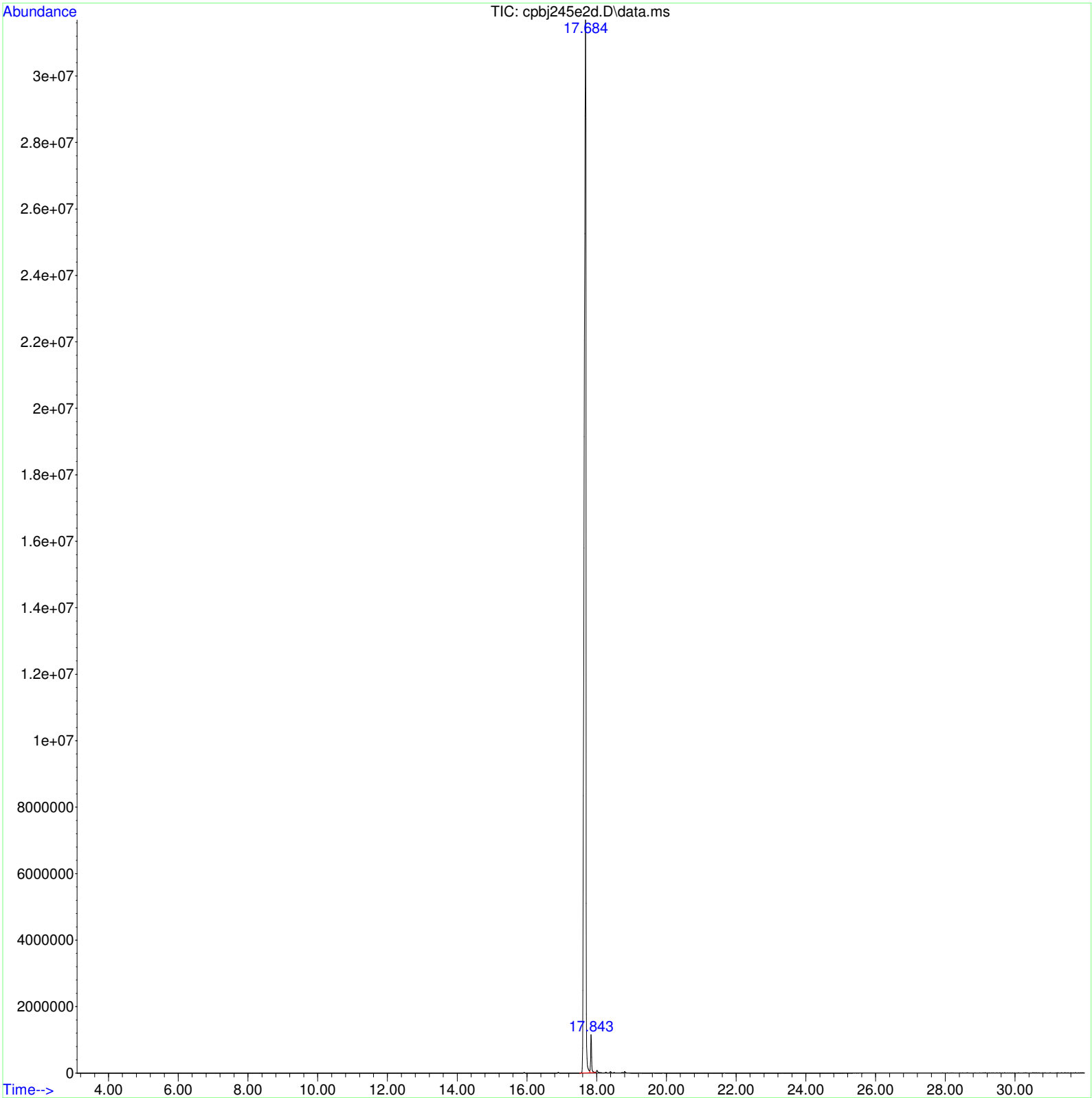
STANDARD.M Fri May 03 13:34:24 2013 GCMS



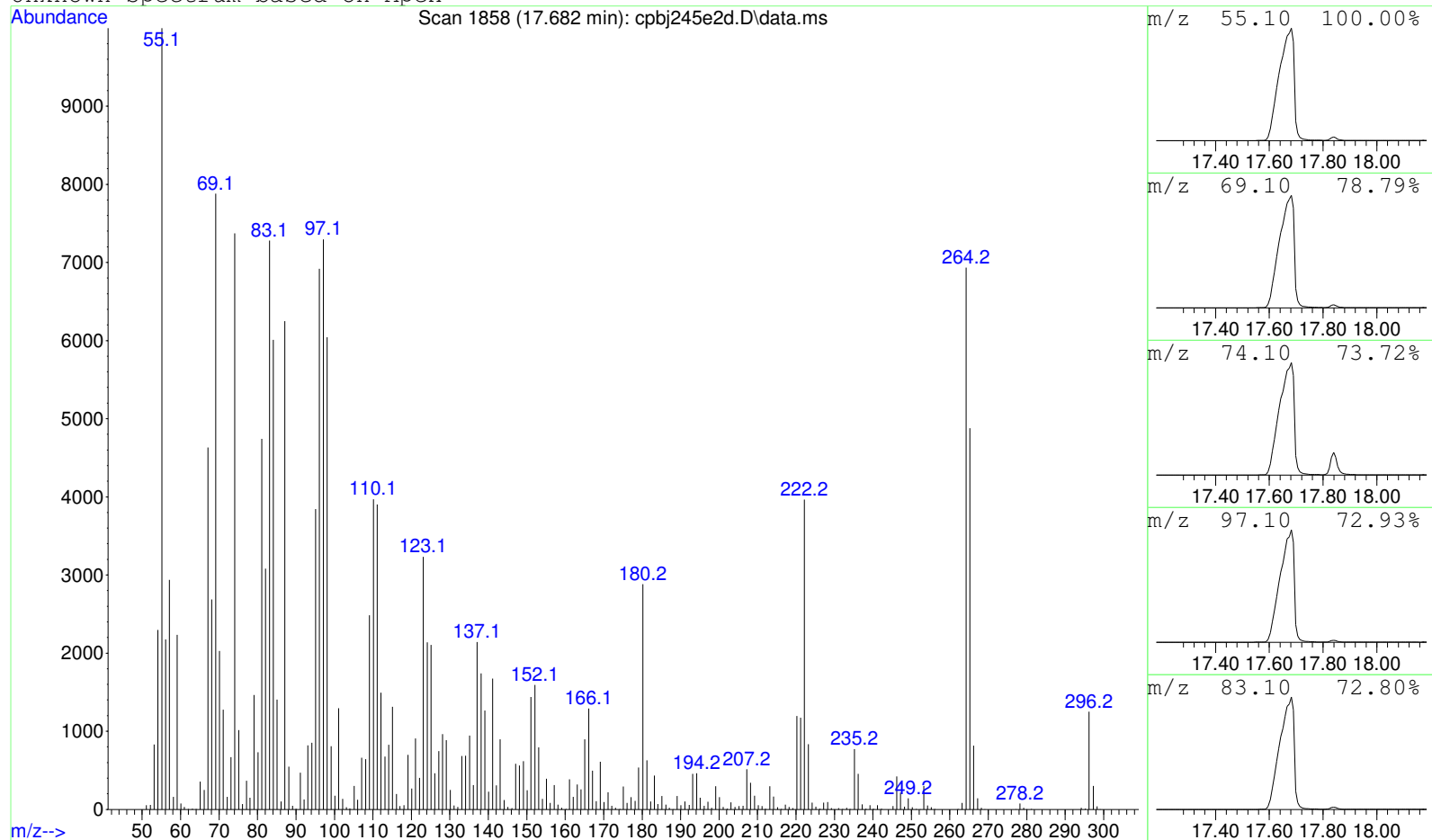
Data Path : D:\GCMS Daten\130503\
Data File : cpbj245e2d.D
Acq On : 3 May 2013 11:03
Operator : JD
Sample : cpbj245e2d
Misc :
ALS Vial : 27 Sample Multiplier: 1

Search Libraries: C:\DATABASE\DEMO.L Minimum Quality: 0

Unknown Spectrum: Apex
Integration Events: ChemStation Integrator - autoint1.e



Unknown Spectrum based on Apex



Data File: D:\GCMS Daten\130503\cpbj245e2d.D

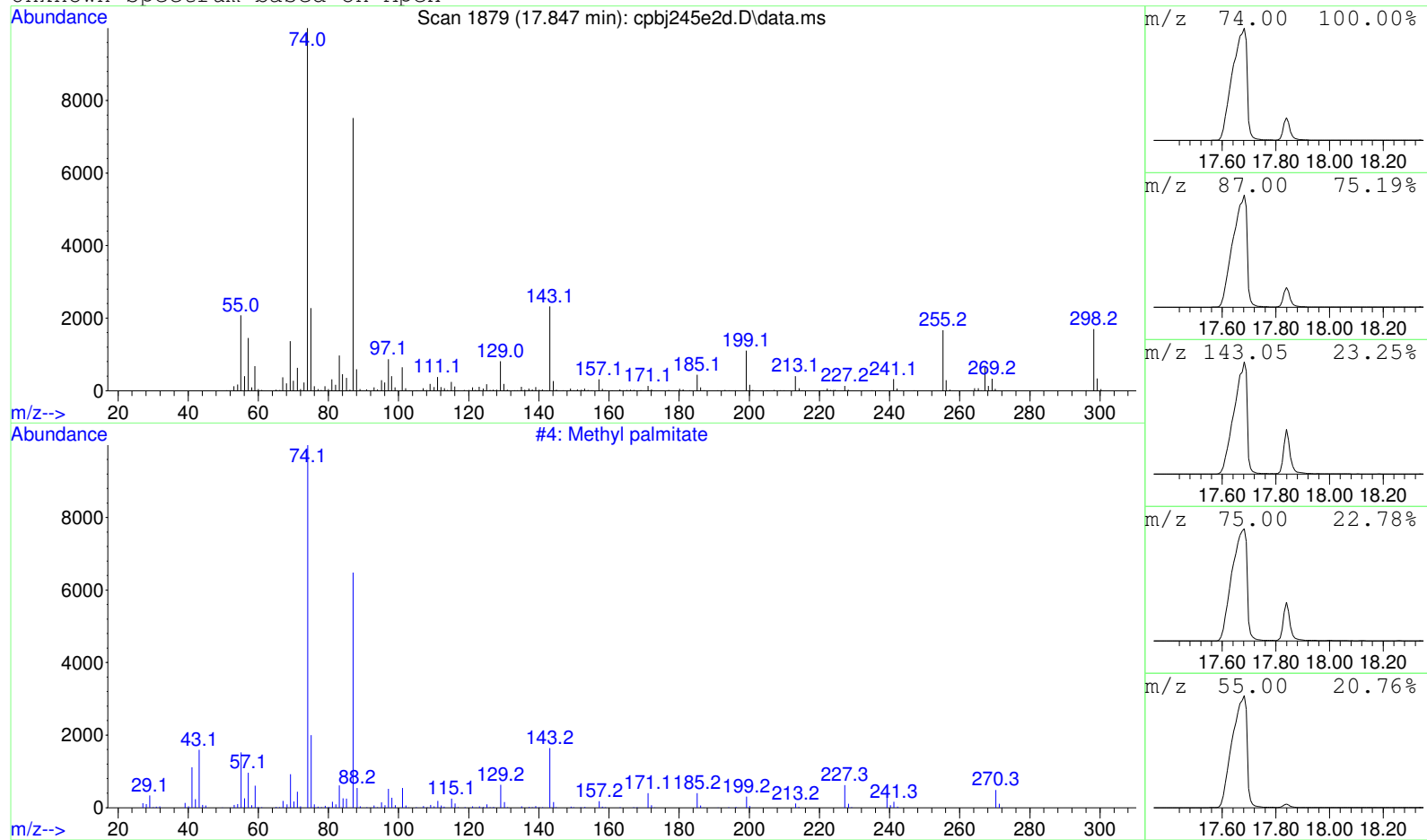
Sample : cpbj245e2d

Peak Number: 1 at 17.682 min Area: 1130288416 Area % 98.19

The 3 best hits from each library. Ref\# CAS\# Qual

C:\DATABASE\DEMO.L No hits were retrieved.

Unknown Spectrum based on Apex



Data File: D:\GCMS Daten\130503\cpbj245e2d.D

Sample : cpbj245e2d

Peak Number: 2 at 17.847 min Area: 20784154 Area % 1.81

The 3 best hits from each library.

Ref\# CAS\# Qual

C:\DATABASE\DEMO.L
1 Methyl palmitate

4 000112-39-0 64