

Area Percent Report

Data Path : D:\GCMS Daten\130502\  
Data File : CPBJ245E2D.D  
Acq On : 2 May 2013 14:50  
Operator : JD  
Sample : CPBJ245E2D  
Misc :  
ALS Vial : 27 Sample Multiplier: 1

Integration Parameters: autoint1.e  
Integrator: ChemStation

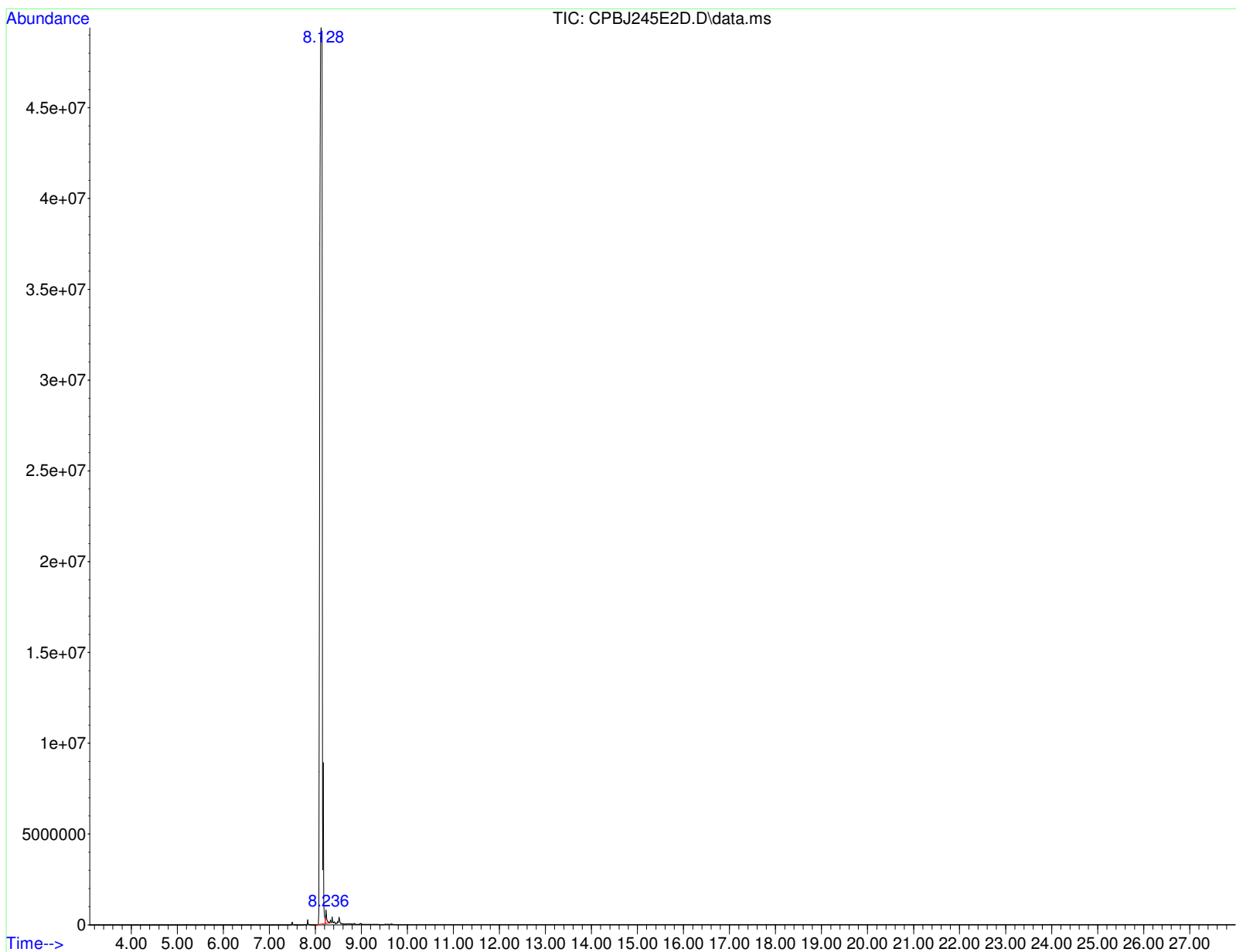
Method : D:\GCMS Daten\130423\ocafk345r.D\STANDARD.M  
Title :

Signal : TIC: CPBJ245E2D.D\data.ms

peak #	R.T. min	first scan	max scan	last scan	PK TY	peak height	corr. area	corr. % max.	% of total
1	8.128	627	642	653	BV 5	49352192	1813156712	100.00%	99.362%
2	8.236	653	655	665	VV	671157	11644062	0.64%	0.638%

Sum of corrected areas: 1824800774

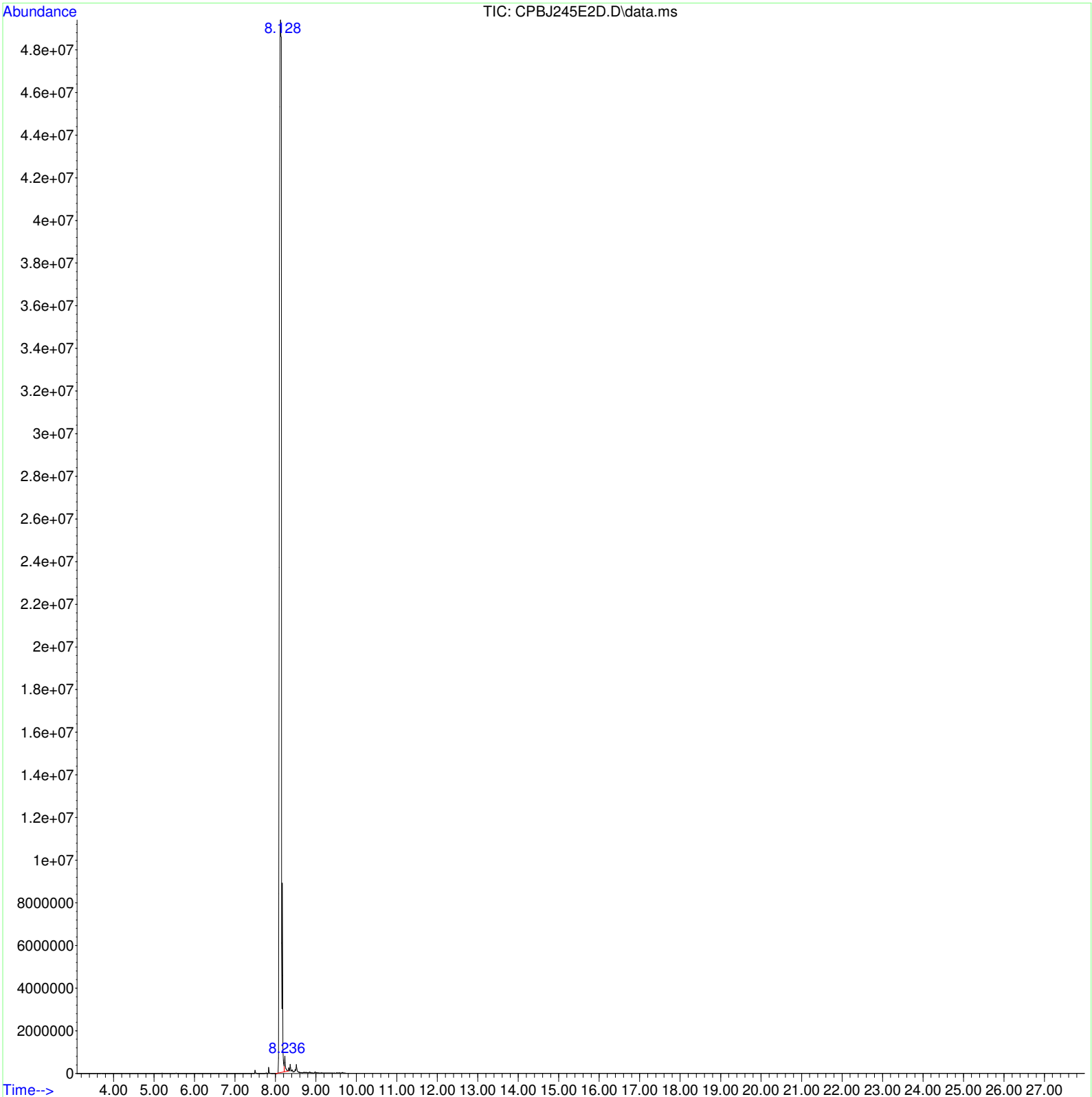
STANDARD.M Fri May 03 08:54:01 2013 GCMS



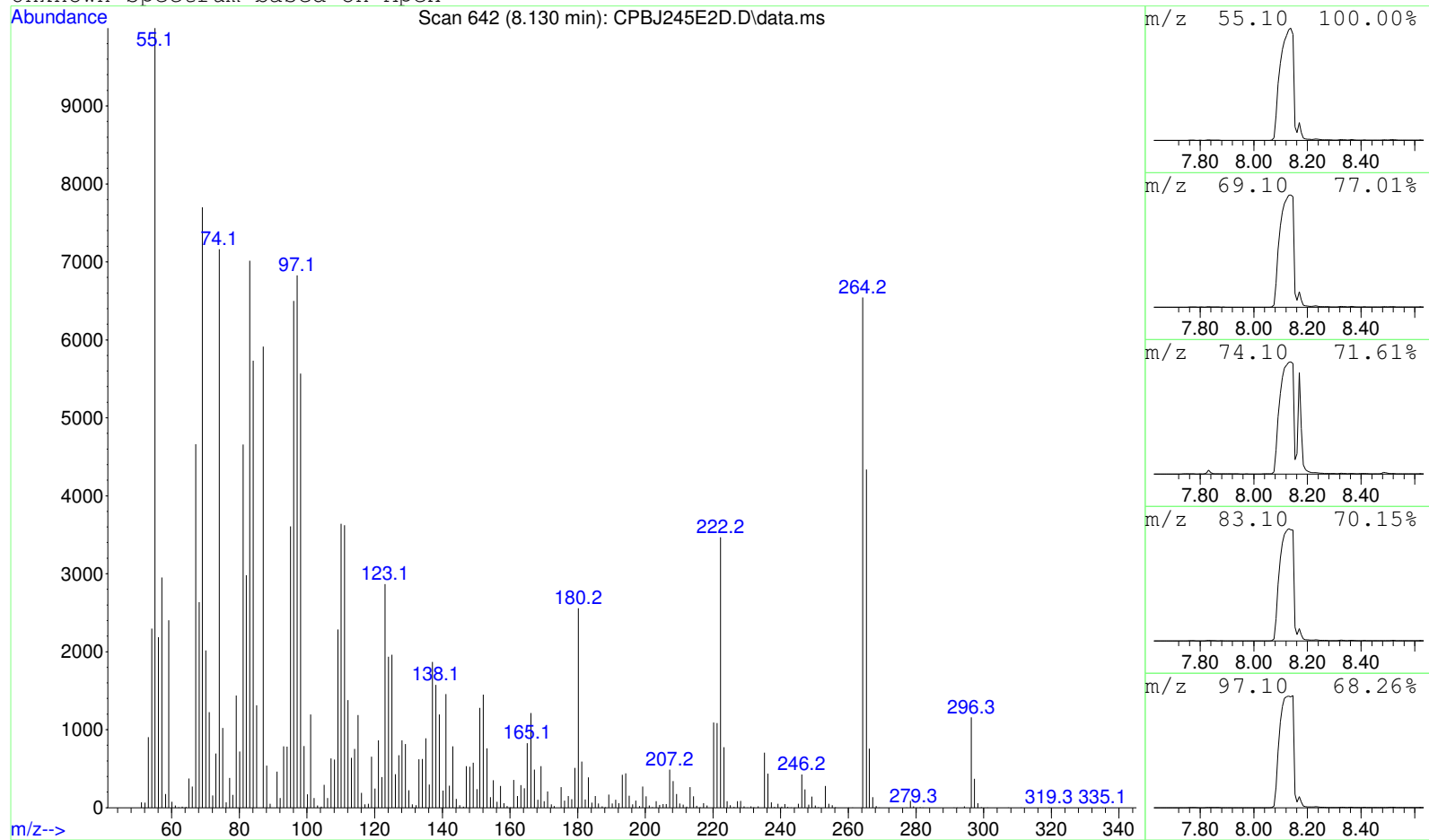
Data Path : D:\GCMS Daten\130502\  
Data File : CPBJ245E2D.D  
Acq On : 2 May 2013 14:50  
Operator : JD  
Sample : CPBJ245E2D  
Misc :  
ALS Vial : 27 Sample Multiplier: 1

Search Libraries: C:\DATABASE\DEMO.L Minimum Quality: 0

Unknown Spectrum: Apex  
Integration Events: ChemStation Integrator - autoint1.e



Unknown Spectrum based on Apex



Data File: D:\GCMS Daten\130502\CPBJ245E2D.D

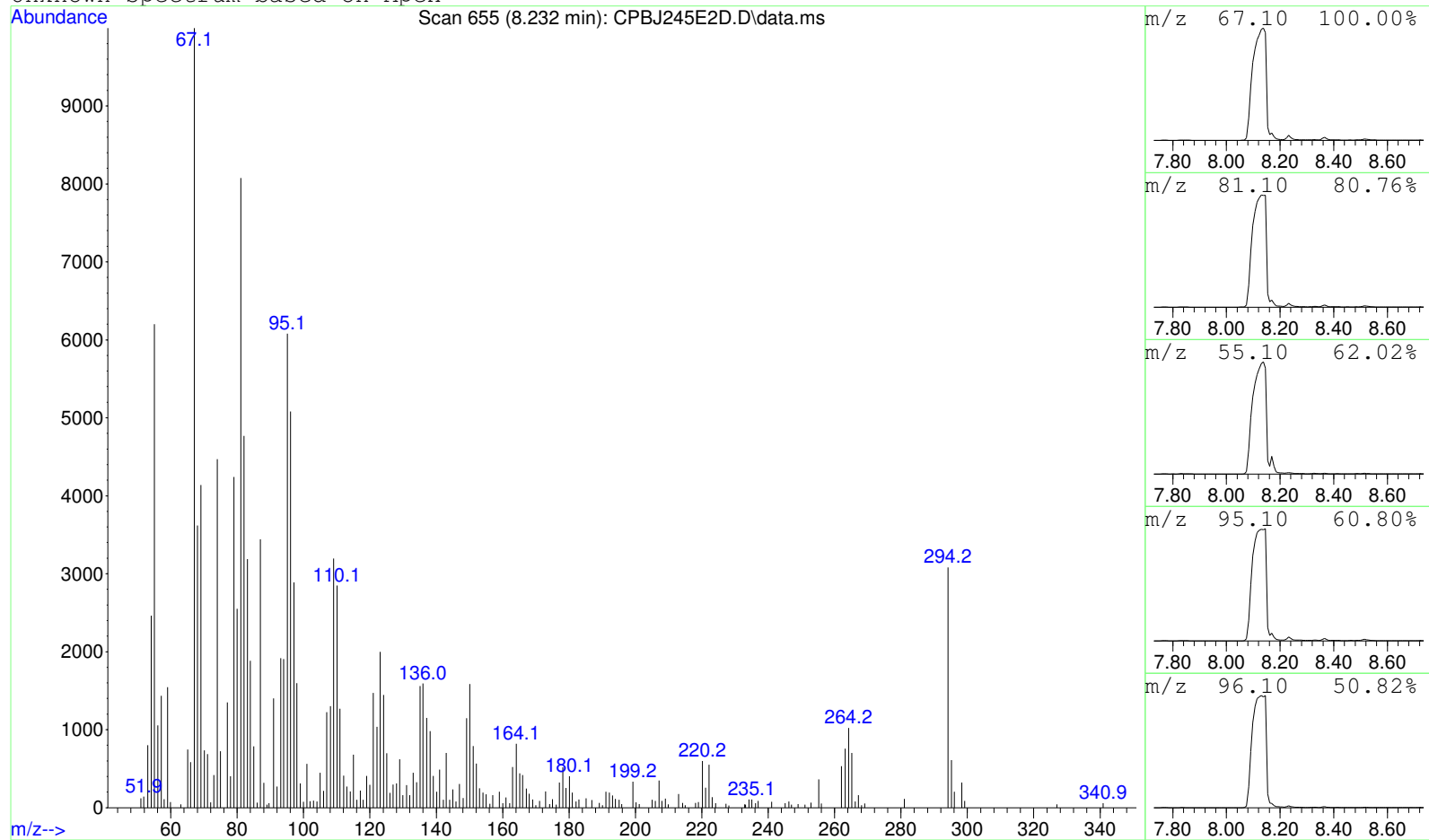
Sample : CPBJ245E2D

Peak Number: 1 at 8.130 min Area: 1813156712 Area % 99.36

The 3 best hits from each library. Ref\# CAS\# Qual

C:\DATABASE\DEMO.L No hits were retrieved.

Unknown Spectrum based on Apex



Data File: D:\GCMS Daten\130502\CPBJ245E2D.D

Sample : CPBJ245E2D

Peak Number: 2 at 8.232 min Area: 11644062 Area % 0.64

The 3 best hits from each library.

Ref\# CAS\# Qual

C:\DATABASE\DEMO.L No hits were retrieved.