

Area Percent Report

Data Path : D:\GCMS Daten\130219\
Data File : cpbj245c1.D
Acq On : 19 Feb 2013 14:11
Operator : JD
Sample : cpbj245c1
Misc :
ALS Vial : 52 Sample Multiplier: 1

Integration Parameters: autoint1.e
Integrator: ChemStation

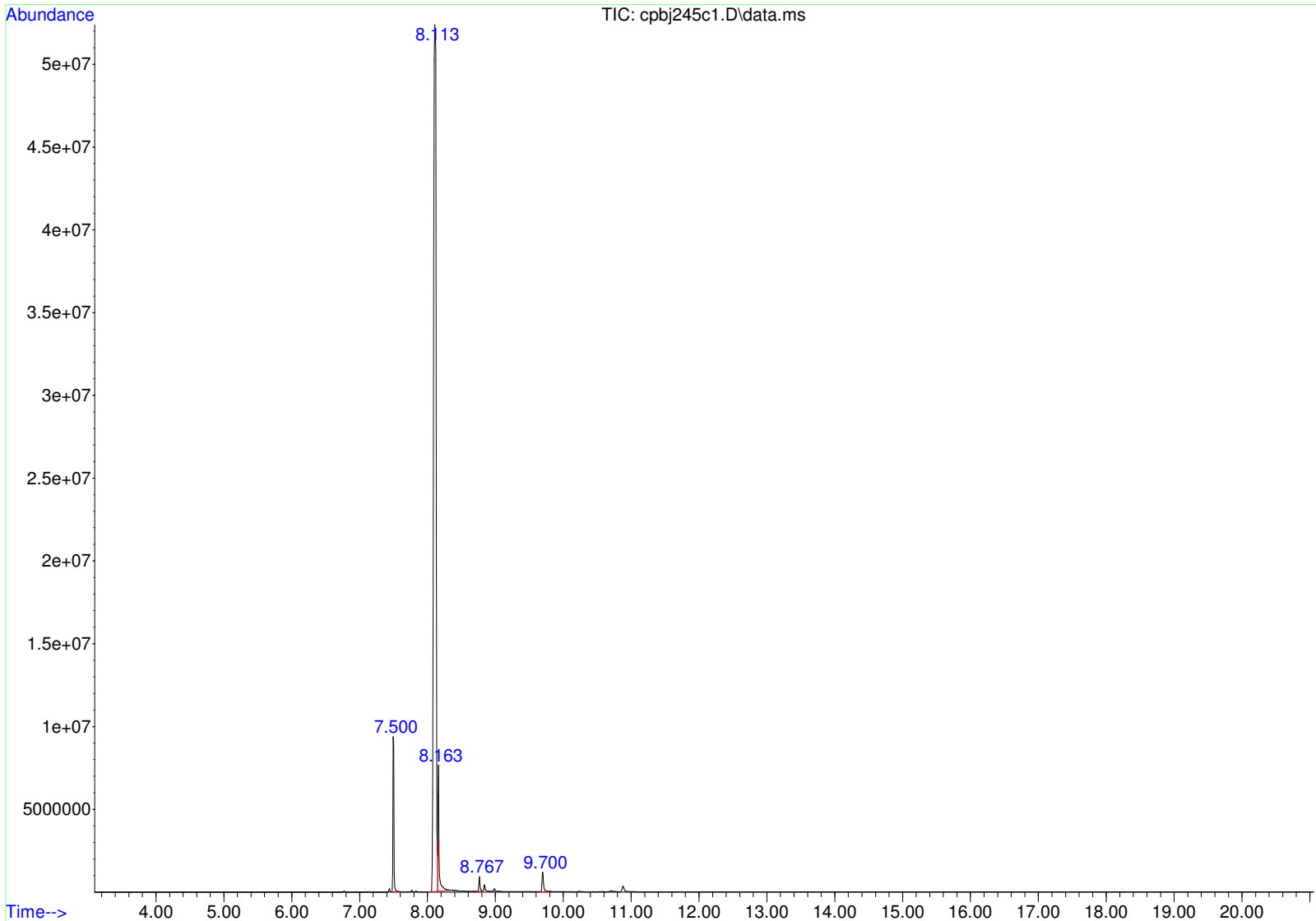
Method : D:\GCMS Daten\130201\ocafk283f8.D\STANDARD.M
Title :

Signal : TIC: cpbj245c1.D\data.ms

peak #	R.T. min	first scan	max scan	last scan	PK TY	peak height	corr. area	corr. % max.	% of total
1	7.500	558	562	573	PB	10219886	77243111	5.56%	4.842%
2	8.113	629	640	644	BV 2	52235209	1389352801	100.00%	87.091%
3	8.163	644	646	669	VB	7222483	99822979	7.18%	6.257%
4	8.767	717	723	729	BV	809594	10268235	0.74%	0.644%
5	9.700	836	842	853	BB	1196190	18609771	1.34%	1.167%

Sum of corrected areas: 1595296898

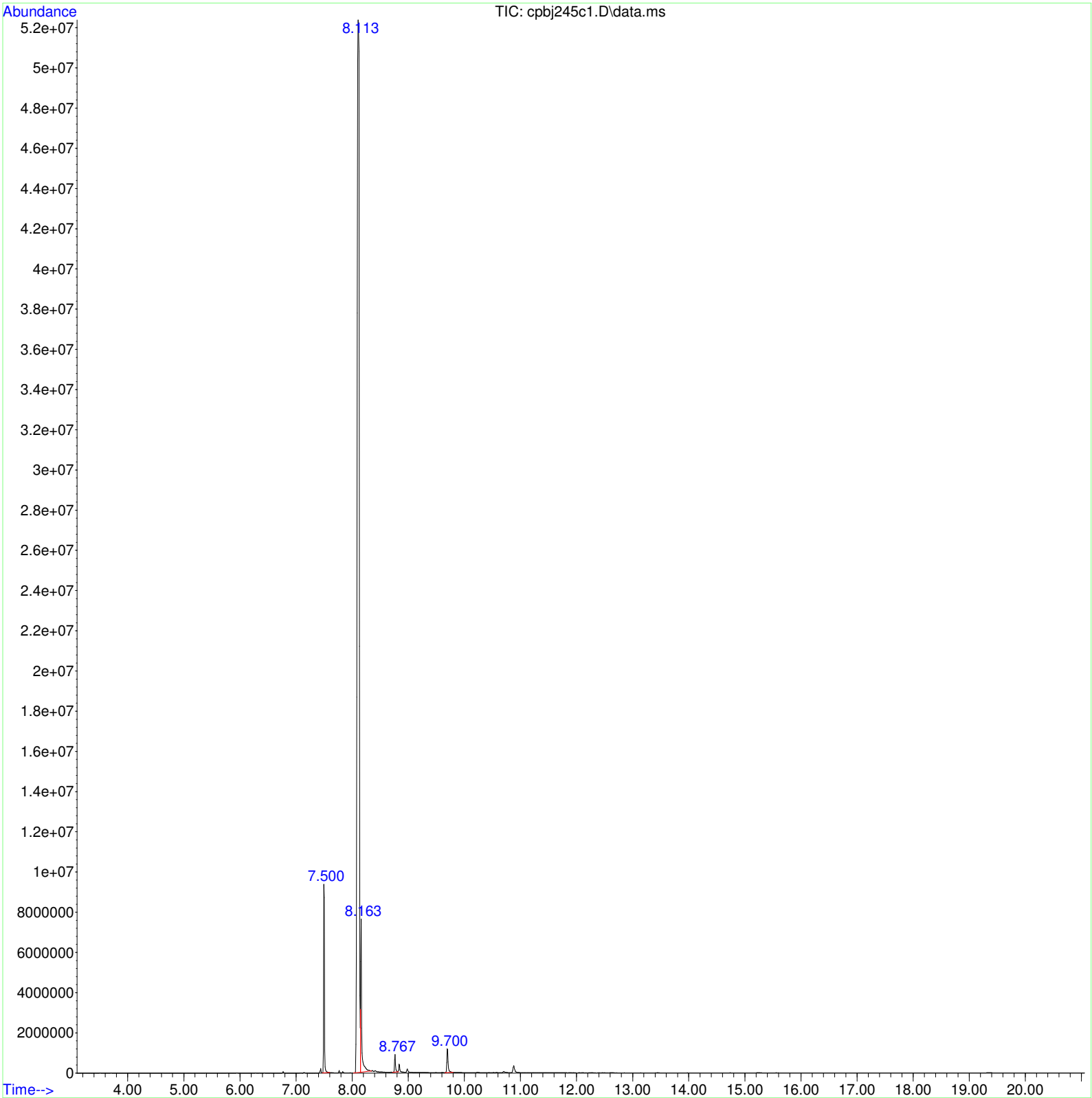
STANDARD.M Tue Feb 19 14:32:37 2013 GCMS



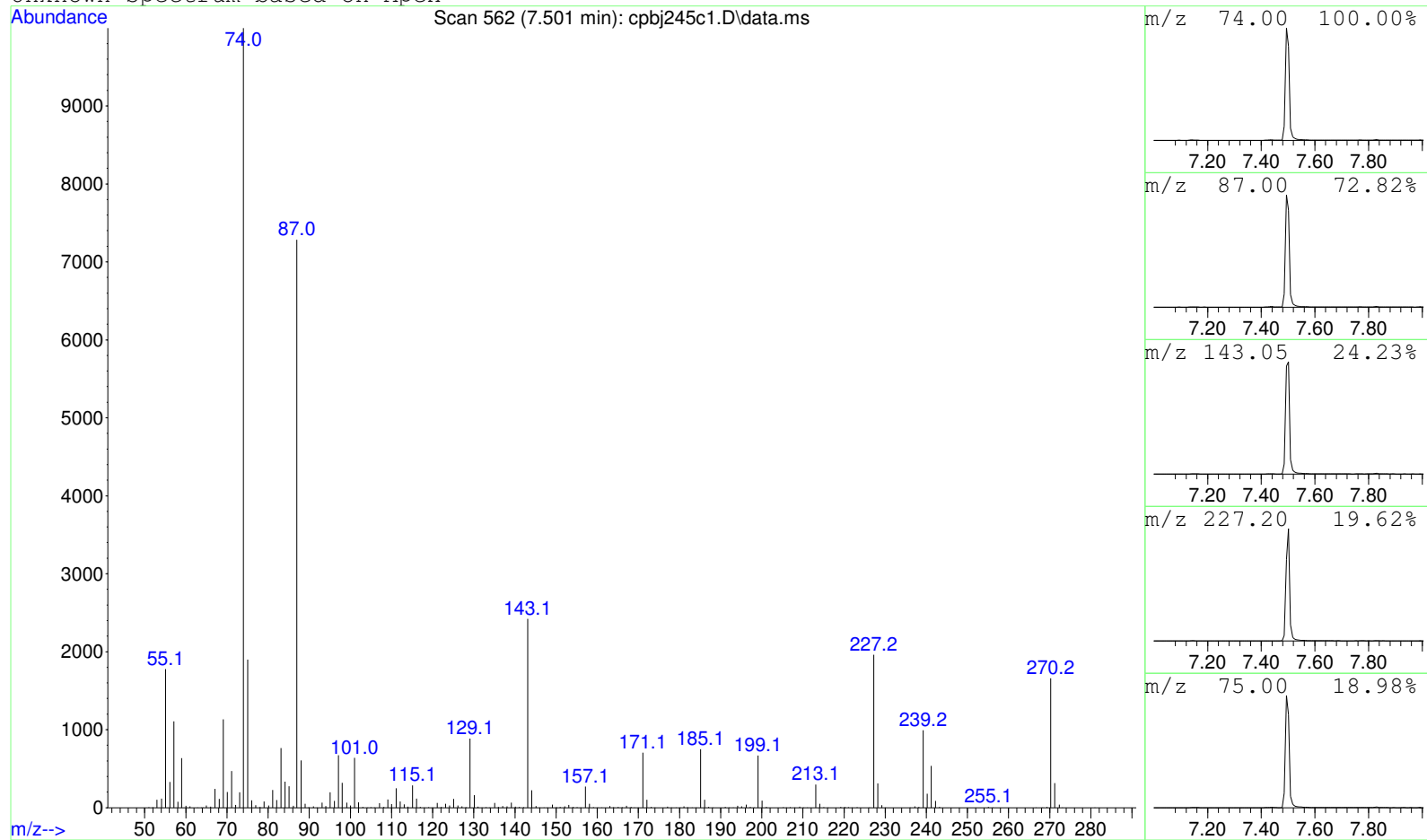
Data Path : D:\GCMS Daten\130219\
Data File : cpbj245c1.D
Acq On : 19 Feb 2013 14:11
Operator : JD
Sample : cpbj245c1
Misc :
ALS Vial : 52 Sample Multiplier: 1

Search Libraries: C:\Database\OC_LIB.L Minimum Quality: 0

Unknown Spectrum: Apex
Integration Events: ChemStation Integrator - autoint1.e



Unknown Spectrum based on Apex



Data File: D:\GCMS Daten\130219\cpbj245c1.D

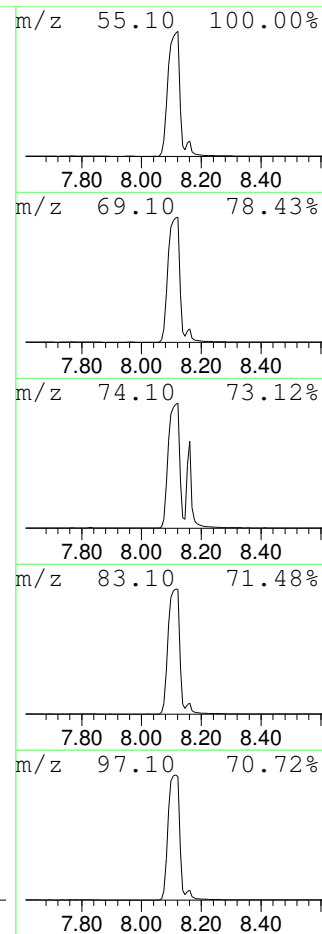
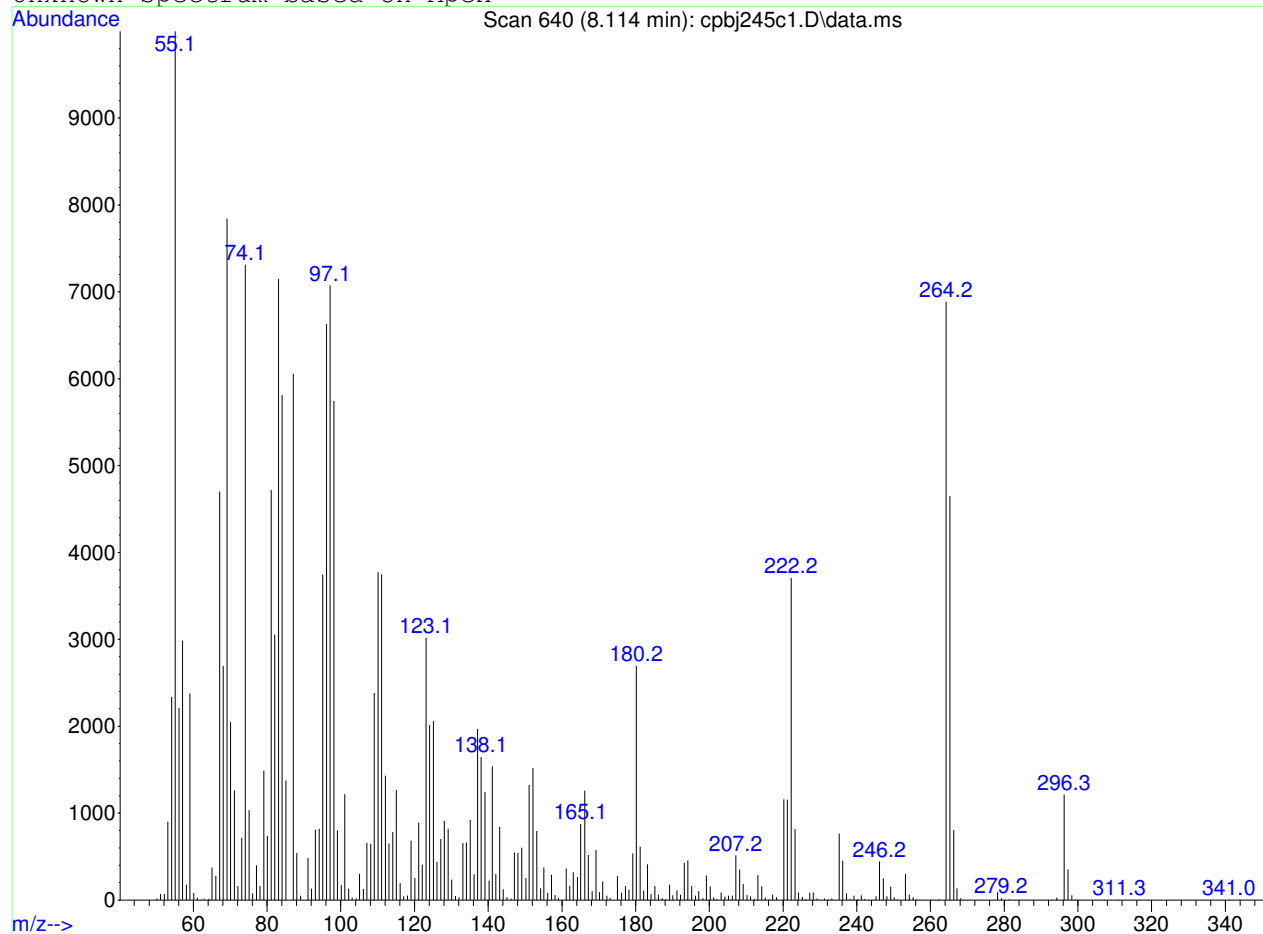
Sample : cpbj245c1

Peak Number: 1 at 7.501 min Area: 77243111 Area % 4.84

The 3 best hits from each library. Ref\# CAS\# Qual

C:\Database\OC_LIB.L No hits were retrieved.

Unknown Spectrum based on Apex



Data File: D:\GCMS Daten\130219\cpbj245c1.D

Sample : cpbj245c1

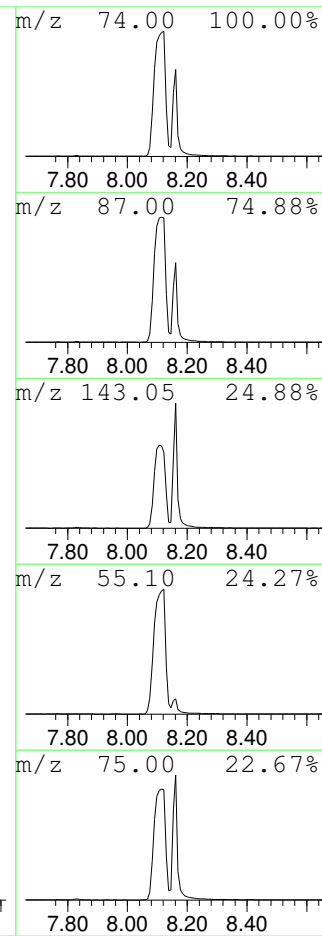
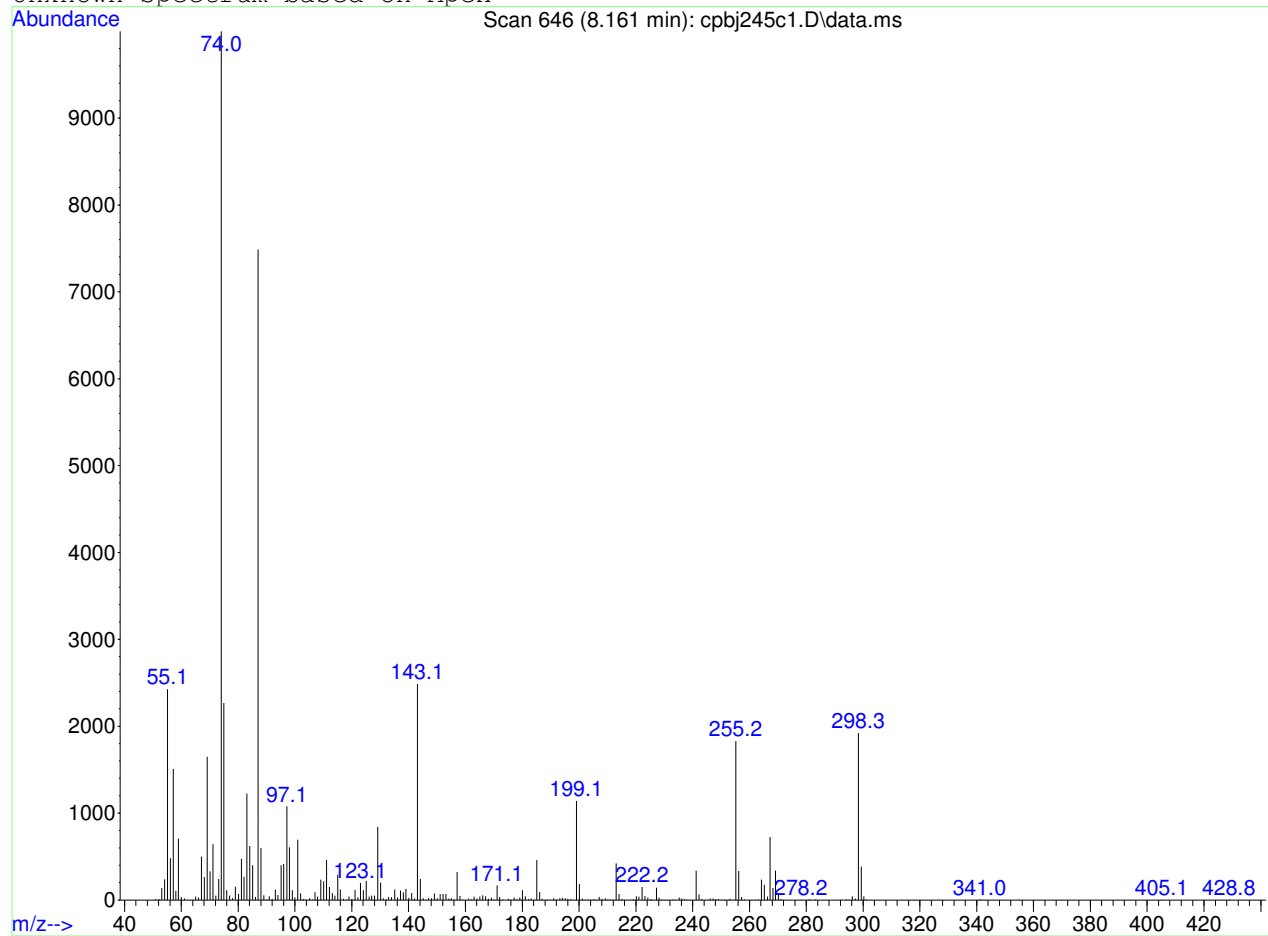
Peak Number: 2 at 8.114 min Area: 1389352801 Area % 87.09

The 3 best hits from each library.

Ref\# CAS\# Qual

C:\Database\OC_LIB.L No hits were retrieved.

Unknown Spectrum based on Apex



Data File: D:\GCMS Daten\130219\cpbj245c1.D

Sample : cpbj245c1

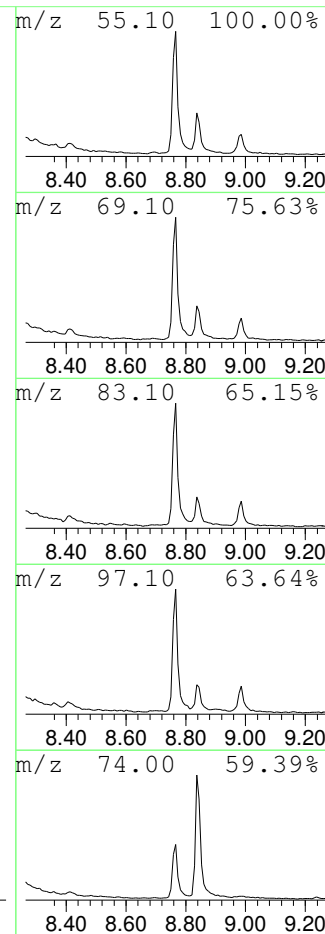
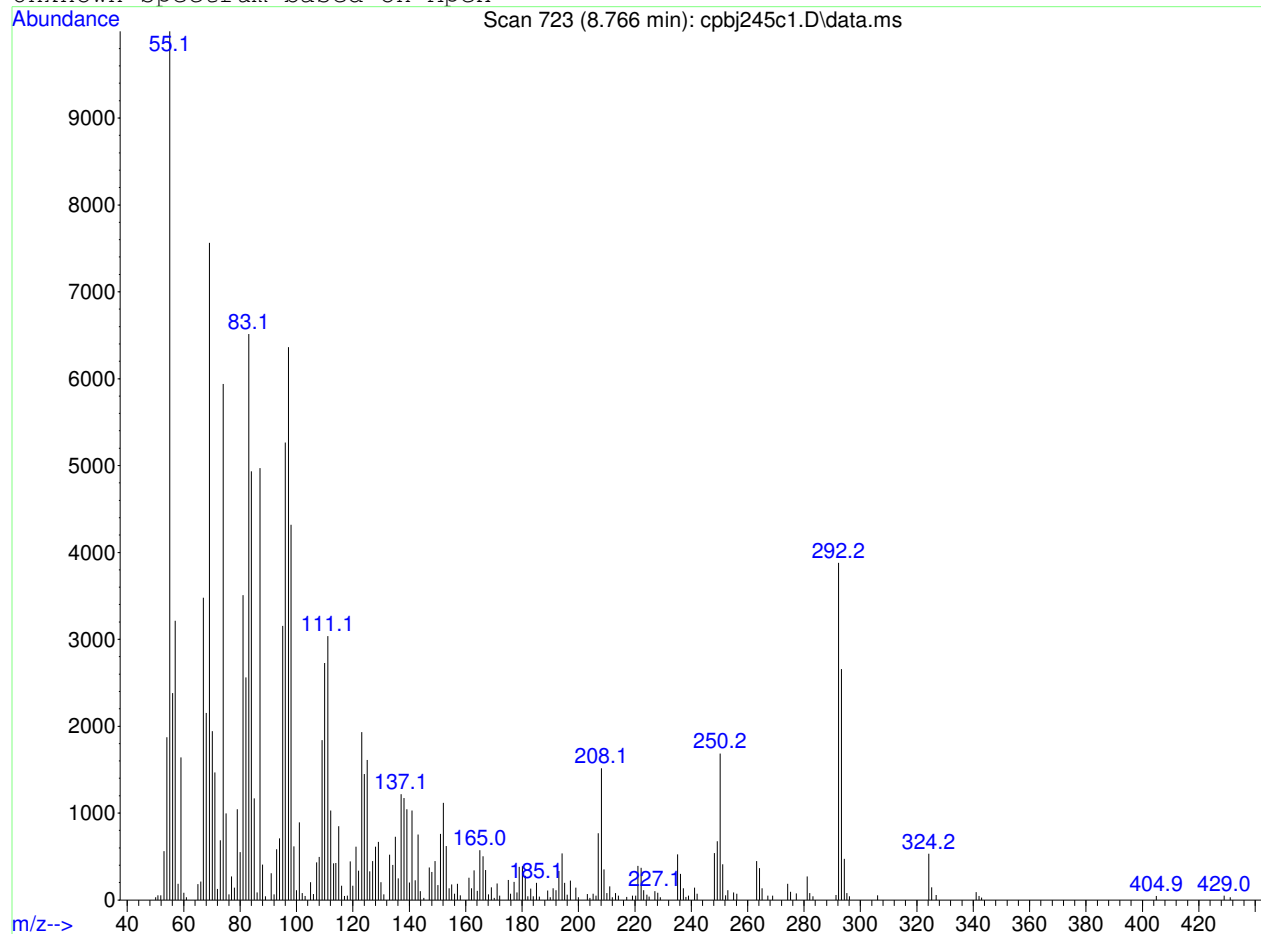
Peak Number: 3 at 8.161 min Area: 99822979 Area % 6.26

The 3 best hits from each library.

Ref\# CAS\# Qual

C:\Database\OC_LIB.L No hits were retrieved.

Unknown Spectrum based on Apex



Data File: D:\GCMS Daten\130219\cpbj245c1.D

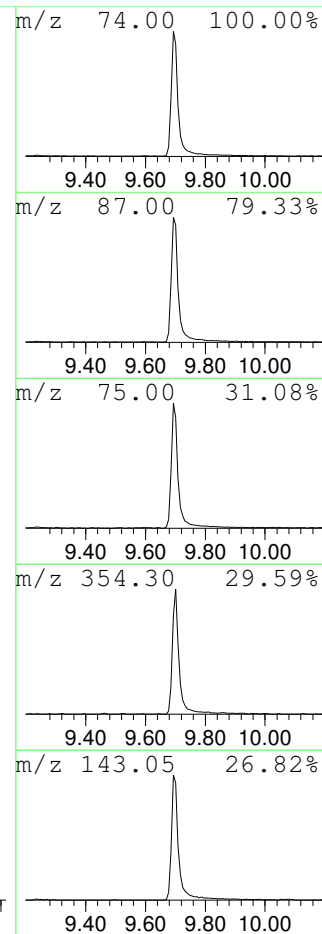
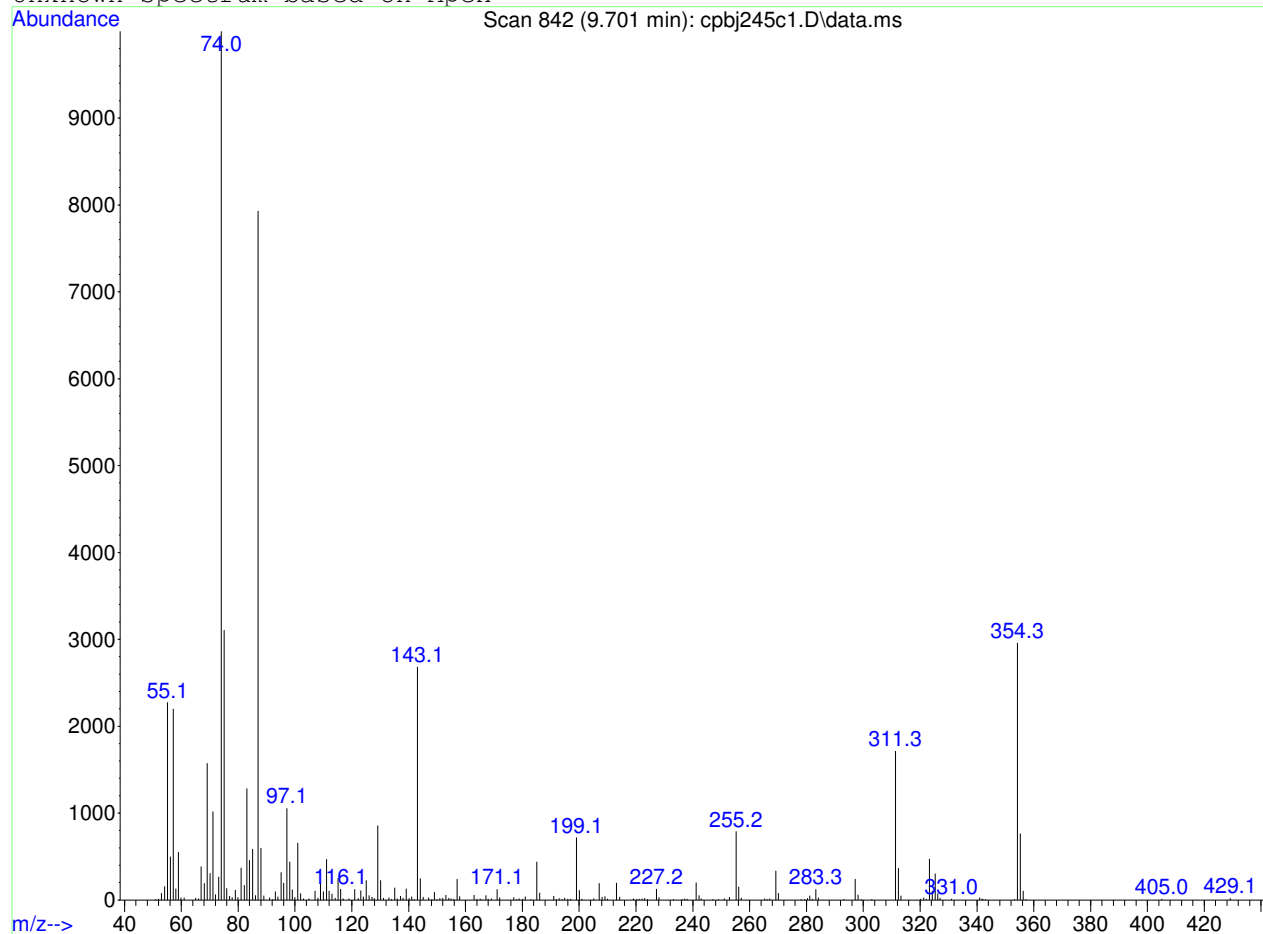
Sample : cpbj245c1

Peak Number: 4 at 8.766 min Area: 10268235 Area % 0.64

The 3 best hits from each library. Ref\# CAS\# Qual

C:\Database\OC_LIB.L No hits were retrieved.

Unknown Spectrum based on Apex



Data File: D:\GCMS Daten\130219\cpbj245c1.D

Sample : cpbj245c1

Peak Number: 5 at 9.701 min Area: 18609771 Area % 1.17

The 3 best hits from each library.

Ref\# CAS\# Qual

C:\Database\OC_LIB.L No hits were retrieved.