

Area Percent Report

Data Path : D:\GCMS Daten\140910\
Data File : cp-daI-BPE.D
Acq On : 10 Sep 2014 14:39
Operator : JD
Sample : cp-daI-BPE
Misc :
ALS Vial : 41 Sample Multiplier: 1

Integration Parameters: autoint1.e
Integrator: ChemStation

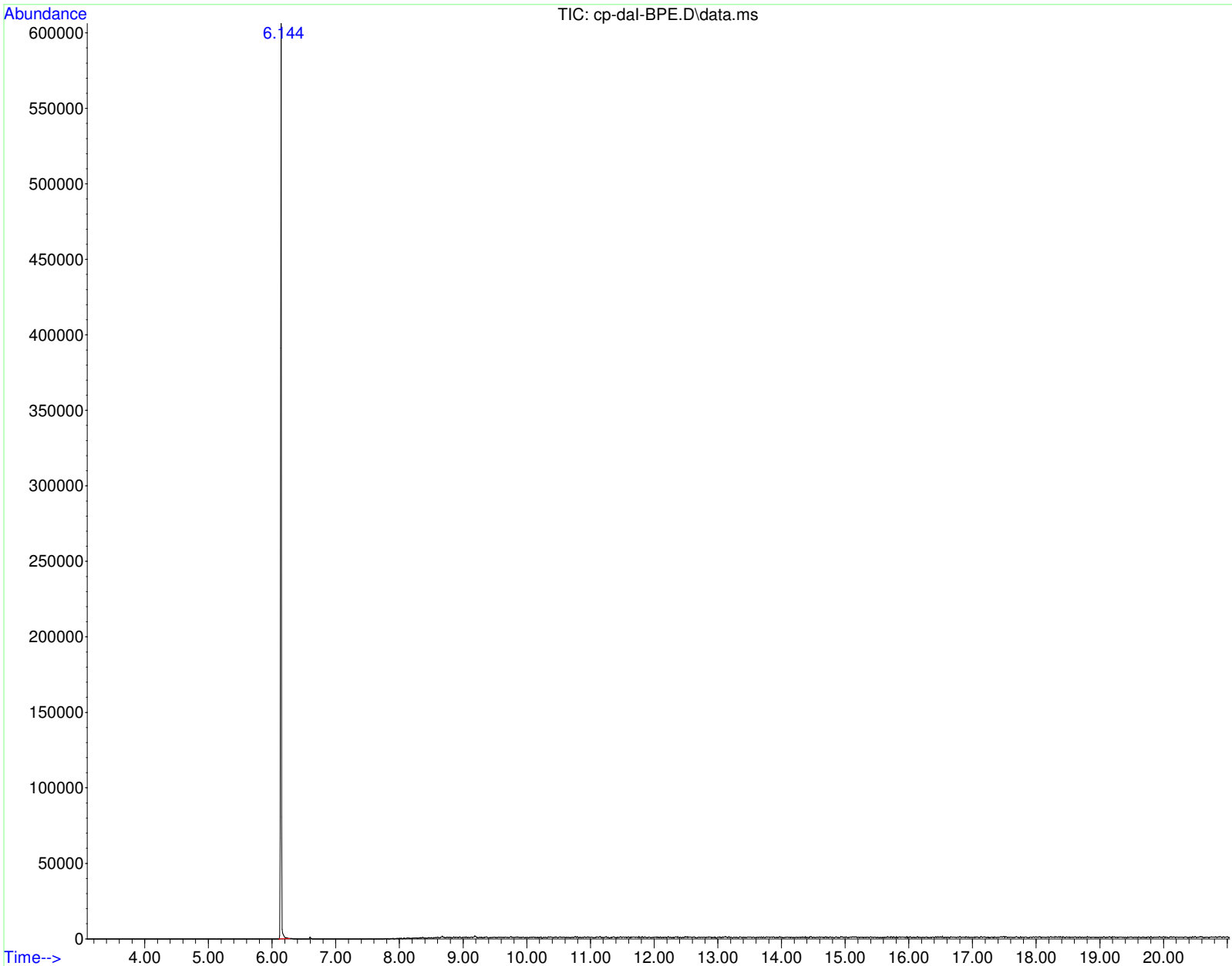
Method : D:\GCMS Daten\140901\ocwmm06roh.D\STANDARD.M
Title :

Signal : TIC: cp-daI-BPE.D\data.ms

peak #	R.T. min	first scan	max scan	last scan	PK TY	peak height	corr. area	corr. % max.	% of total
1	6.144	385	389	405	BB	546041	5503319	100.00%	100.000%

Sum of corrected areas: 5503319

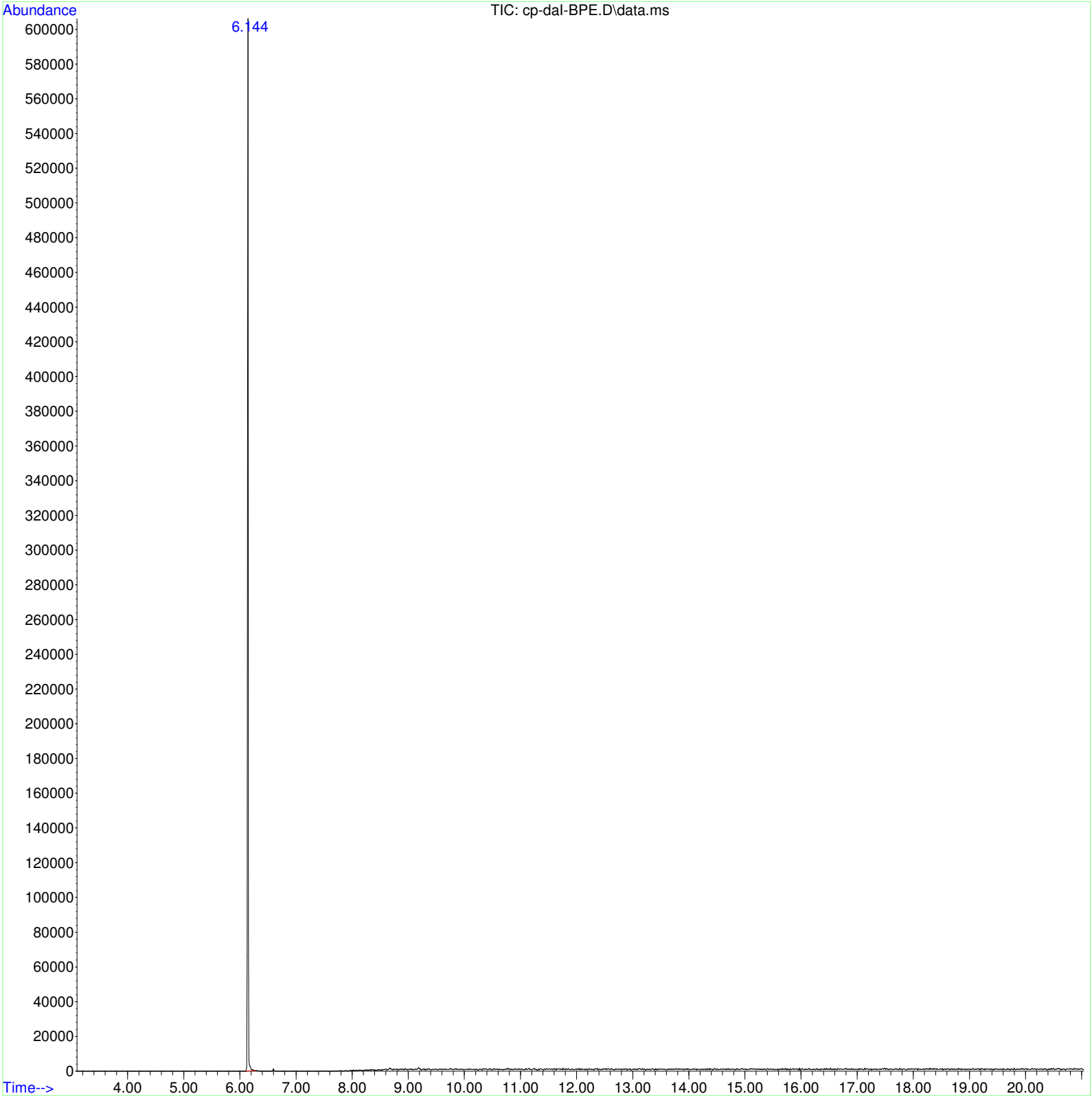
STANDARD.M Wed Sep 10 15:01:18 2014 GCMS



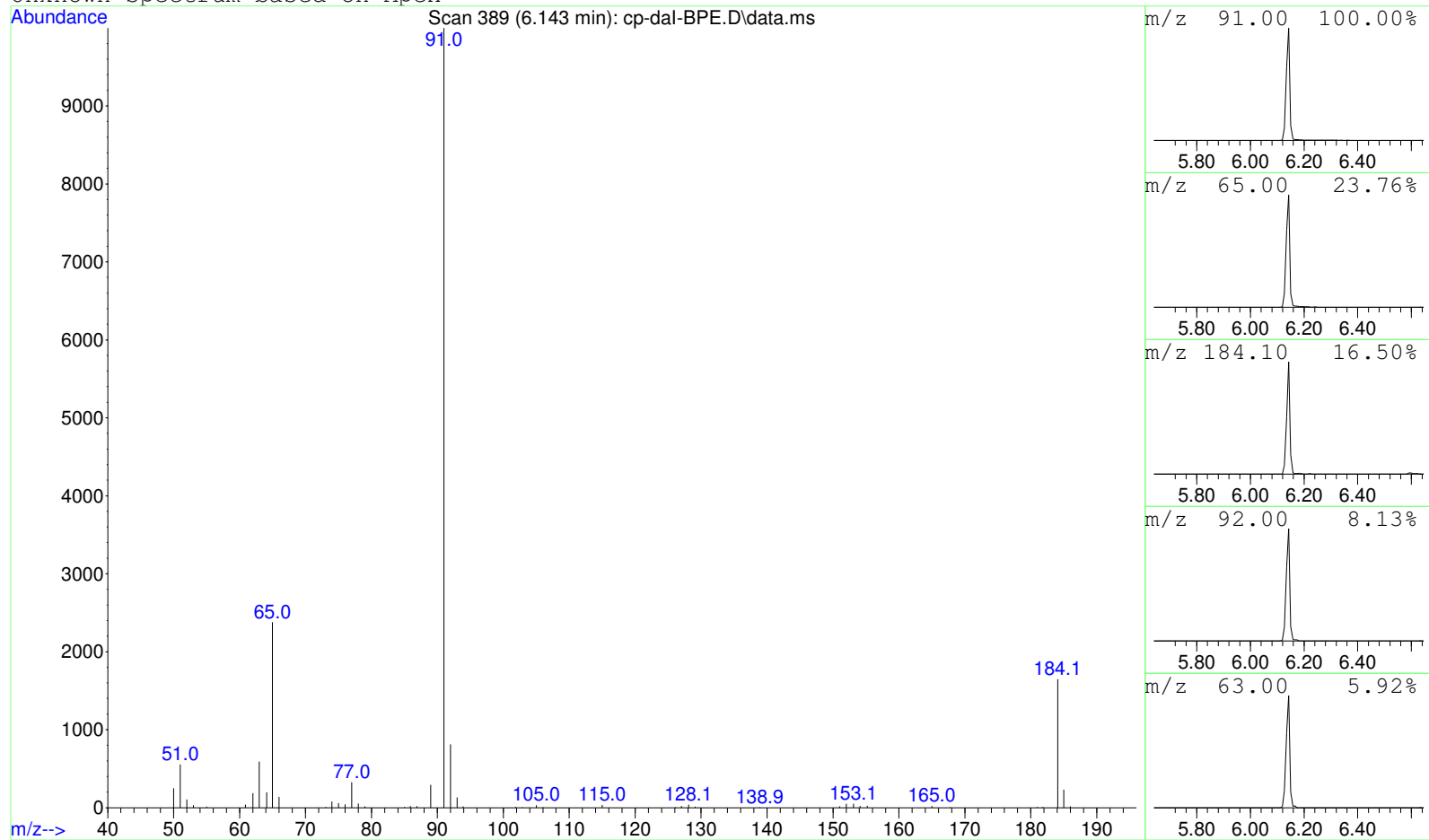
Data Path : D:\GCMS Daten\140910\
Data File : cp-daI-BPE.D
Acq On : 10 Sep 2014 14:39
Operator : JD
Sample : cp-daI-BPE
Misc :
ALS Vial : 41 Sample Multiplier: 1

Search Libraries: C:\DATABASE\DEMO.L Minimum Quality: 0

Unknown Spectrum: Apex
Integration Events: ChemStation Integrator - autoint1.e



Unknown Spectrum based on Apex



Data File: D:\GCMS Daten\140910\cp-daI-BPE.D

Sample : cp-daI-BPE

Peak Number: 1 at 6.143 min Area: 5503319 Area % 100.00

The 3 best hits from each library. Ref\# CAS\# Qual

C:\DATABASE\DEMO.L No hits were retrieved.